

Technical Data Sheet

BUV395 Rat Anti-Mouse CD62L

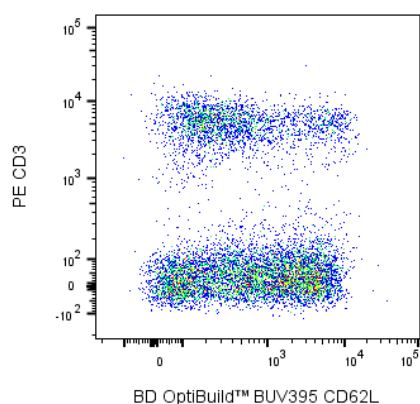
Product Information

Material Number:	740218
Size:	50 µg
Clone:	MEL-14
Alternative Name:	Sell; L-selectin; LECAM-1; LAM-1; Lnhr; Ly-22; Ly-m22; Lyam-1
Reactivity:	Mouse (Tested in Development)
Isotype:	Rat F344, also known as Fischer, CDF IgG2a, κ
Immunogen:	C3H/eb mouse B lymphoma 38C-13
Application:	Flow cytometry (Qualified)
Concentration:	0.2 mg/ml
Entrez Gene ID:	20343
Storage Buffer:	Aqueous buffered solution containing ≤0.09% sodium azide.
Regulatory Status:	RUO

Description

The MEL-14 monoclonal antibody specifically binds to CD62L (L-selectin), a 95 kDa (on neutrophils) or 74 kDa (on lymphocytes) receptor with lectin-like and Epidermal Growth Factor-like domains. In the mouse, L-selectin is detected on most thymocytes, with the highest levels of expression on an immunocompetent subset and a population of dividing progenitor cells, and on peripheral leukocytes, including subsets of B and T lymphocytes, neutrophils, monocytes, and eosinophils. This member of the selectin adhesion molecule family appears to be required for lymphocyte homing to peripheral lymph nodes and to contribute to neutrophil emigration at inflammatory sites. L-selectin is rapidly shed from lymphocytes and neutrophils upon cellular activation; metalloproteinases may mediate the release of CD62L ectodomains from the cell surface. The level of CD62L expression, along with other markers, distinguishes naive, effector, and memory T cells. L-selectin binds to sialyaed oligosaccharide determinants on high endothelial venules (HEV) in peripheral lymph nodes. In vitro studies have demonstrated that CD34, GlyCAM-1, and MAdCAM-1, all recognized by mAb MECA-79 (anti-mouse PNA_d Carbohydrate Epitope, Cat. No. 553863), may be ligands for CD62L. MEL-14 mAb blocks in vitro binding of lymphocytes to peripheral lymph node HEV and inhibits in vivo lymphocyte extravasation into peripheral lymph nodes and late stages of leukocyte rolling.

The antibody was conjugated to BD Horizon™ BUV395 which is part of the BD Horizon Brilliant™ Ultraviolet family of dyes. This dye has been exclusively developed by BD Biosciences to have minimal spillover into other detectors, making it an optimal choice for multicolor flow cytometry. With an Ex Max at 348 nm and an Em Max at 395 nm, BD Horizon BUV395 can be excited with a 355 nm laser and detected with a 379/28 filter.



Multiparameter flow cytometric analysis using BD OptiBuild™ BUV395 Rat Anti-Mouse CD62L antibody (Cat. No. 740218) on live mouse splenocytes. Flow cytometry was performed using a BD LSRFortessa™ X-20 Flow Cytometer System.

Preparation and Storage

Store undiluted at 4°C and protected from prolonged exposure to light. Do not freeze. The monoclonal antibody was purified from tissue culture supernatant or ascites by affinity chromatography. The antibody was conjugated with BD Horizon BUV395 under optimal conditions that minimize unconjugated dye and antibody.

Recommended Assay Procedure

For optimal and reproducible results, BD Horizon Brilliant Stain Buffer should be used anytime two or more BD Horizon Brilliant dyes (including BD OptiBuild Brilliant reagents) are used in the same experiment. Fluorescent dye interactions may cause staining artifacts which may affect data interpretation. The BD Horizon Brilliant Stain Buffer was designed to minimize these interactions. More information can be found in the Technical Data Sheet of the BD Horizon Brilliant Stain Buffer (Cat. No. 563794).

Suggested Companion Products

Catalog Number	Name	Size	Clone
563556	BUV395 Rat IgG2a, κ Isotype Control	50 μ g	R35-95
554656	Stain Buffer (FBS)	500 mL	
554657	Stain Buffer (BSA)	500 mL	
563794	Brilliant Stain Buffer	100 Tests	
555899	Lysing Buffer	100 mL	
553141	Purified Rat Anti-Mouse CD16/CD32 (Mouse BD Fc Block™)	0.1 mg	2.4G2

Product Notices

1. This antibody was developed for use in flow cytometry.
2. The production process underwent stringent testing and validation to assure that it generates a high-quality conjugate with consistent performance and specific binding activity. However, verification testing has not been performed on all conjugate lots.
3. Researchers should determine the optimal concentration of this reagent for their individual applications.
4. An isotype control should be used at the same concentration as the antibody of interest.
5. Caution: Sodium azide yields highly toxic hydrazoic acid under acidic conditions. Dilute azide compounds in running water before discarding to avoid accumulation of potentially explosive deposits in plumbing.
6. For fluorochrome spectra and suitable instrument settings, please refer to our Multicolor Flow Cytometry web page at www.bdbiosciences.com/colors.
7. Please refer to www.bdbiosciences.com/us/s/resources for technical protocols.
8. BD Horizon Brilliant Stain Buffer is covered by one or more of the following US patents: 8,110,673; 8,158,444; 8,575,303; 8,354,239.
9. BD Horizon Brilliant Ultraviolet 395 is covered by one or more of the following US patents: 8,158,444; 8,575,303; 8,354,239.

References

Ernst DN, Weigle WO, Noonan DJ, McQuitty DN, Hobbs MV. The age-associated increase in IFN- γ synthesis by mouse CD8⁺ T cells correlates with shifts in the frequencies of cell subsets defined by membrane CD44, CD45RB, 3G11, and MEL-14 expression. *J Immunol.* 1993; 151(2):575-587. (Clone-specific: Flow cytometry).

Gallatin WM, Weissman IL, Butcher EC. A cell-surface molecule involved in organ-specific homing of lymphocytes. *Nature.* 1983; 304(5921):30-34. (Immunogen: Flow cytometry).

Iwabuchi K, Ohgama J, Ogasawara K, et al. Distribution of MEL-14⁺ cells in various lymphoid tissues. *Immunobiology.* 1991; 182(2):161-173. (Clone-specific: Flow cytometry).

Jung TM, Gallatin WM, Weissman IL, Dailey MO. Down-regulation of homing receptors after T cell activation. *J Immunol.* 1988; 141(12):4110-4117. (Clone-specific: Flow cytometry).

Kishimoto TK, Jutila MA, Berg EL, Butcher EC. Neutrophil Mac-1 and MEL-14 adhesion proteins inversely regulated by chemotactic factors. *Science.* 1989; 245(4923):1238-1241. (Clone-specific: Flow cytometry).

Lewinsohn DM, Bargatze RF, Butcher EC. Leukocyte-endothelial cell recognition: evidence of a common molecular mechanism shared by neutrophils, lymphocytes, and other leukocytes. *J Immunol.* 1987; 138(12):4313-4321. (Clone-specific: Flow cytometry).

Ley K, Bullard DC, Arbones ML, et al. Sequential contribution of L- and P-selectin to leukocyte rolling in vivo. *J Exp Med.* 1995; 181(2):669-675. (Clone-specific: Flow cytometry).

Mobley JL, Dailey MO. Regulation of adhesion molecule expression by CD8 T cells in vivo. I. Differential regulation of gp90MEL-14 (LECAM-1), Pgp-1, LFA-1, and VLA-4 alpha during the differentiation of cytotoxic T lymphocytes induced by allografts. *J Immunol.* 1992; 148(8):2348-2356. (Clone-specific: Flow cytometry).

Pizcueta P, Luscinskas FW. Monoclonal antibody blockade of L-selectin inhibits mononuclear leukocyte recruitment to inflammatory sites in vivo. *Am J Pathol.* 1994; 145(2):461-469. (Clone-specific: Flow cytometry).

Reichert RA, Jerabek L, Gallatin WM, Butcher EC, Weissman IL. Ontogeny of lymphocyte homing receptor expression in the mouse thymus. *J Immunol.* 1986; 136(10):3535-3542. (Clone-specific: Flow cytometry).

Reichert RA, Weissman IL, Butcher EC. Dual immunofluorescence studies of cortisone-induced thymic involution: evidence for a major cortical component to cortisone-resistant thymocytes. *J Immunol.* 1986; 136(10):3529-3534. (Clone-specific: Flow cytometry).

Reichert RA, Weissman IL, Butcher EC. Phenotypic analysis of thymocytes that express homing receptors for peripheral lymph nodes. *J Immunol.* 1986; 136(10):3521-3528. (Clone-specific: Flow cytometry).

Siegelman MH, Cheng IC, Weissman IL, Wakeland EK. The mouse lymph node homing receptor is identical with the lymphocyte cell surface marker Ly-22: role of the EGF domain in endothelial binding. *Cell.* 1990; 61(4):611-622. (Clone-specific: Flow cytometry).

Vestweber D. Ligand-specificity of the selectins. *J Cell Biochem.* 1996; 61(4):585-591. (Biology: Flow cytometry).

Yang G, Mizuno MT, Hellstrom KE, Chen L. B7-negative versus B7-positive P815 tumor: differential requirements for priming of an antitumor immune response in lymph nodes. *J Immunol.* 1997; 158(2):851-858. (Clone-specific: Flow cytometry).

BD Biosciences

bdbiosciences.com

United States
877.232.8995

Canada
888.268.5430

Europe
32.53.720.550

Japan
0120.8555.90

Asia Pacific
65.6861.0633

Latin America/Caribbean
0800.771.7157



For country contact information, visit bdbiosciences.com/contact

Conditions: The information disclosed herein is not to be construed as a recommendation to use the above product in violation of any patents. BD Biosciences will not be held responsible for a patent infringement or other violations that may occur with the use of our products. Purchase does not include or carry any right to resell or transfer this product either as a stand-alone product or as a component of another product. Any use of this product other than the permitted use without the express written authorization of Becton Dickinson and Company is strictly prohibited.

For Research Use Only. Not for use in diagnostic or therapeutic procedures. Not for resale.

©2020 BD. All rights reserved. Unless otherwise noted, BD, the BD Logo and all other trademarks are the property of Becton, Dickinson and Company or its affiliates.