

Technical Data Sheet

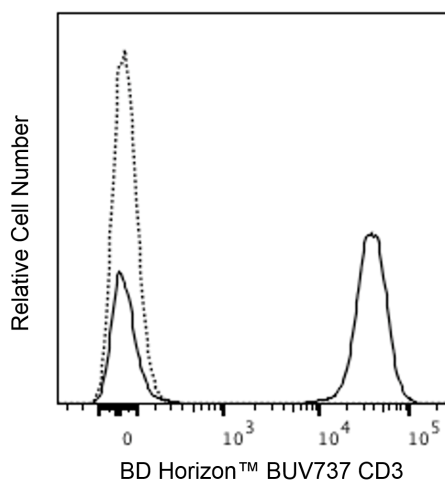
BUV737 Mouse Anti-Human CD3**Product Information**

Material Number:	612752
Alternate Name:	CD3-epsilon; CD3E; Leu4; T-cell surface antigen T3/Leu-4 epsilon chain; T3E
Size:	100 Tests
Vol. per Test:	5 µl
Clone:	SK7 (also known as Leu-4)
Immunogen:	Human Thymocytes
Isotype:	Mouse (BALB/c) IgG1, κ
Reactivity:	QC Testing: Human
Workshop:	II T118; III T492
Storage Buffer:	Aqueous buffered solution containing ≤0.09% sodium azide.

Description

The SK7 (Leu-4) monoclonal antibody specifically binds to the epsilon chain of the CD3 antigen/T-cell antigen receptor (TCR) complex. This complex is composed of at least six proteins that range in molecular weight from 20 to 30 kDa. The antigen recognized by CD3 antibodies is noncovalently associated with either α/β or γ/δ TCR (70 to 90 kDa). The CD3 antigen is present on 61% to 85% of normal peripheral blood lymphocytes 60% to 85% of thymocytes and on Purkinje cells in the cerebellum. The soluble form of this antibody has a mitogenic effect on most peripheral blood T lymphocytes, provided appropriate functional monocytes are present.

The antibody was conjugated to BD Horizon BUV737 which is part of the BD Horizon Brilliant™ Ultraviolet family of dyes. This dye is a tandem fluorochrome with an Ex Max near 350 nm and an Em Max near 737 nm. BD Horizon Brilliant BUV737 can be excited by the ultraviolet laser (355 nm) and detected with a 740/35 nm filter. Due to the excitation of the acceptor dye by the red laser line, there may be significant spillover into red laser detectors with filters in the 700-720 nm range.



Flow cytometric analysis of CD3 expression on human peripheral blood lymphocytes. Human whole blood was stained with either BD Horizon™ BUV737 Mouse IgG1, κ Isotype Control (Cat. No. 612758; dashed line histogram) or BD Horizon BUV737 Mouse Anti-Human CD3 antibody (Cat. No. 612752/612753; solid line histogram). The erythrocytes were lysed with BD FACS™ Lysing Solution (Cat. No. 349202). The fluorescence histogram showing CD3 expression (or Ig Isotype control staining) was derived from events with the forward and side light-scatter characteristics of intact lymphocytes. Flow cytometry and data analysis were performed using a BD LSRFortessa™ X-20 Cell Analyzer System and FlowJo™ software.

Preparation and Storage

Store undiluted at 4°C and protected from prolonged exposure to light. Do not freeze.

The monoclonal antibody was purified from tissue culture supernatant or ascites by affinity chromatography.

The antibody was conjugated with BD Horizon BUV737 under optimum conditions, and unconjugated antibody and free BD Horizon BUV737 were removed.

Application Notes**Application**

Flow cytometry

Routinely Tested

BD Biosciences

bdbiosciences.com

United States 877.232.8995 Canada 866.979.9408 Europe 32.2.400.98.95 Japan 0120.8555.90 Asia Pacific 65.6861.0633 Latin America/Caribbean 55.11.5185.9995

For country contact information, visit bdbiosciences.com/contact

Conditions: The information disclosed herein is not to be construed as a recommendation to use the above product in violation of any patents. BD Biosciences will not be held responsible for patent infringement or other violations that may occur with the use of our products. Purchase does not include or carry any right to resell or transfer this product either as a stand-alone product or as a component of another product. Any use of this product other than the permitted use without the express written authorization of Becton, Dickinson and Company is strictly prohibited.

For Research Use Only. Not for use in diagnostic or therapeutic procedures. Not for resale.
© 2017 BD. BD, the BD Logo and all other trademarks are property of Becton, Dickinson and Company.



Recommended Assay Procedure:

BD™ CompBeads can be used as surrogates to assess fluorescence spillover (Compensation). When fluorochrome-conjugated antibodies are bound to BD CompBeads, they have spectral properties very similar to cells. However, for some fluorochromes there can be small differences in spectral emissions compared to cells, resulting in spillover values that differ when compared to biological controls. It is strongly recommended that when using a reagent for the first time, users compare the spillover on cells and BD CompBeads. This will ensure that BD CompBeads are appropriate for your specific cellular application.

For optimal and reproducible results, BD Horizon Brilliant Stain Buffer should be used anytime two or more BD Horizon Brilliant dyes are used in the same experiment. Fluorescent dye interactions may cause staining artifacts which may affect data interpretation. The BD Horizon Brilliant Stain Buffer was designed to minimize these interactions. More information can be found in the Technical Data Sheet of the BD Horizon Brilliant Stain Buffer (Cat. No. 563794/566349) or the BD Horizon Brilliant Stain Buffer Plus (Cat. No. 566385).

Note: When using high concentrations of antibody, background binding of this dye to erythroid cell subsets (mature erythrocytes and precursors) has been observed. For researchers studying these cell populations, or in cases where light scatter gating does not adequately exclude these cells from the analysis, this background may be an important factor to consider when selecting reagents for panel(s).

Suggested Companion Products

Catalog Number	Name	Size	Clone
554656	Stain Buffer (FBS)	500 mL	(none)
554657	Stain Buffer (BSA)	500 mL	(none)
563794	Brilliant Stain Buffer	100 Tests	(none)
566349	Brilliant Stain Buffer	1000 Tests	(none)
566385	Brilliant Stain Buffer Plus	1000 Tests	(none)
612758	BUV737 Mouse IgG1, κ Isotype Control	50 µg	X40
612755	BUV737 Mouse Anti-Human CD8	25 Tests	SK1
555899	Lysing Buffer	100 mL	(none)
349202	BD FACS™ Lysing Solution	100 mL	(none)

Product Notices

1. This reagent has been pre-diluted for use at the recommended Volume per Test. We typically use 1×10^6 cells in a 100-µl experimental sample (a test).
2. An isotype control should be used at the same concentration as the antibody of interest.
3. Caution: Sodium azide yields highly toxic hydrazoic acid under acidic conditions. Dilute azide compounds in running water before discarding to avoid accumulation of potentially explosive deposits in plumbing.
4. For fluorochrome spectra and suitable instrument settings, please refer to our Multicolor Flow Cytometry web page at www.bdbiosciences.com/colors.
5. BD Horizon Brilliant Ultraviolet 737 is covered by one or more of the following US patents: 8,110,673; 8,158,444; 8,227,187; 8,575,303; 8,354,239.
6. BD Horizon Brilliant Stain Buffer is covered by one or more of the following US patents: 8,110,673; 8,158,444; 8,575,303; 8,354,239.
7. Please refer to www.bdbiosciences.com/pharming/en/protocols for technical protocols.

References

- Ernst DN, Shih CC. CD3 complex. *J Biol Regul Homeost Agents*. 2000; 14(3):226-229. (Biology)
- Knowles RW. Immunochemical analysis of the T-cell-specific antigens. In: Reinherz EL, Ellis L, Reinherz .. et al., ed. *Leukocyte typing II*. New York: Springer-Verlag; 1986:259-288. (Clone-specific: Immunoprecipitation)
- Kan EA, Wang CY, Wang LC, Evans RL. Noncovalently bonded subunits of 22 and 28 kd are rapidly internalized by T cells reacted with anti-Leu-4 antibody. *J Immunol*. 1983; 131(2):536-539. (Clone-specific: Flow cytometry, Functional assay, Immunofluorescence, Immunoprecipitation)
- Kaneoka H, Perez-Rojas G, Sasasuki T, Benike CJ, Engleman EG. Human T lymphocyte proliferation induced by a pan-T monoclonal antibody (anti-Leu 4): heterogeneity of response is a function of monocytes. *J Immunol*. 1983; 131(1):158-164. (Clone-specific: Activation, Functional assay, Stimulation)
- Knapp W, W. Knapp .. et al., ed. *Leukocyte typing IV : white cell differentiation antigens*. Oxford New York: Oxford University Press; 1989:1-1182. (Biology)
- Lanier LL, Allison JP, Phillips JH. Correlation of cell surface antigen expression on human thymocytes by multi-color flow cytometric analysis: implications for differentiation. *J Immunol*. 1986; 137(8):2501-2507. (Clone-specific: Immunoprecipitation)
- Ledbetter JA, Evans RL, Lipinski M, Cunningham-Rundles C, Good RA, Herzenberg LA. Evolutionary conservation of surface molecules that distinguish T lymphocyte helper/inducer and cytotoxic/suppressor subpopulations in mouse and man. *J Exp Med*. 1981; 153(2):310-323. (Clone-specific: Immunoprecipitation)
- Ledbetter JA, Frankel AE, Herzenberg. Human Leu T-cell differentiation antigens: quantitative expression on normal lymphoid cells and cell lines. In: Hammerling G, Hammerling U, Kearney J, ed. *Monoclonal Antibodies and T Cell Hybridomas: Perspectives and Technical News*. New York: Elsevier/North Holland Biomedical Press; 1981:16-22. (Clone-specific: Flow cytometry, Immunoprecipitation)
- McMichael AJ, A.J. McMichael .. et al., ed. *Leukocyte typing III : white cell differentiation antigens*. Oxford New York: Oxford University Press; 1987:1-1050. (Clone-specific: Flow cytometry)
- Schlossman SF, Stuart F, Schlossman .. et al., ed. *Leukocyte typing V : white cell differentiation antigens : proceedings of the fifth international workshop and conference held in Boston, USA, 3-7 November, 1993*. Oxford: Oxford University Press; 1995(Biology)
- Kurrie R, Seyfert W, Trautwein A, Seiler FR. T cell activation by CD3 antibodies. In: Reinherz EL, Ellis L, Reinherz .. et al., ed. *Leukocyte typing II*. New York: Springer-Verlag; 1986:137-146. (Clone-specific: Activation, Flow cytometry, Functional assay, Stimulation)
- van Dongen JJM, Krissansen GW, Wolvers-Tettero ILM, et al. Cytoplasmic expression of the CD3 antigen as a diagnostic marker for immature T-cell malignancies. *Blood*. 1988; 71(3):603-612. (Clone-specific: Immunofluorescence, Western blot)
- Zola H. *Leukocyte and stromal cell molecules : the CD markers*. Hoboken, N.J.: Wiley-Liss; 2007(Biology)