

Technical Data Sheet

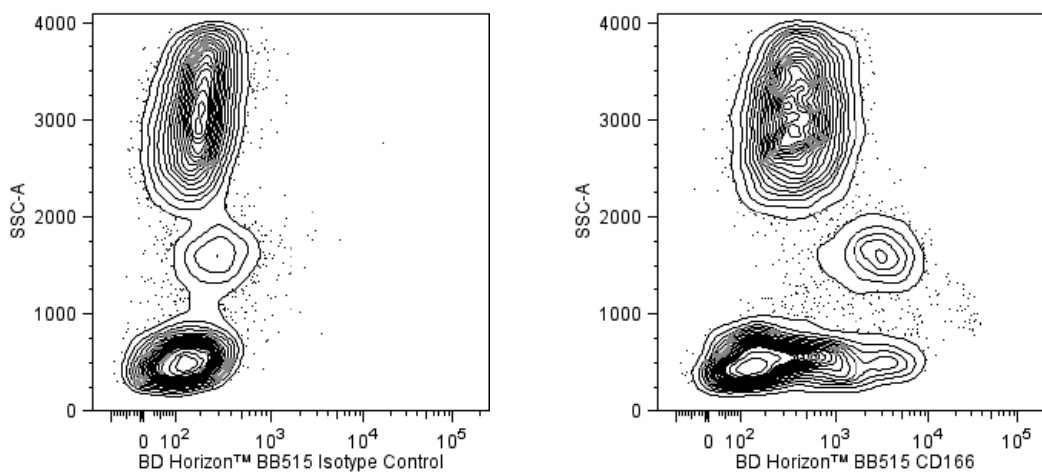
BB515 Mouse Anti-Human CD166**Product Information**

Material Number:	565461
Alternate Name:	ALCAM; Activated leucocyte cell adhesion molecule; MEMD
Size:	50 Tests
Vol. per Test:	5 µl
Clone:	3A6
Isotype:	Mouse IgG1, κ
Reactivity:	QC Testing: Human
Workshop:	VI A109
Storage Buffer:	Aqueous buffered solution containing ≤0.09% sodium azide.

Description

The 3A6 monoclonal antibody specifically binds to the activated leukocyte cell adhesion molecule (ALCAM), a 100-105 kDa transmembrane glycoprotein, also known as the CD6 ligand, CD166. It is composed of an immunoglobulin-like extracellular domain, a transmembrane region and a short cytoplasmic tail. ALCAM belongs to the Ig superfamily of proteins and is expressed on neurons, activated T cells, activated monocytes, epithelial cells and fibroblasts. CD166 plays an important role in mediating adhesion interactions between thymic epithelial cells and CD6+ cells during intrathymic T-cell development.

The antibody was conjugated to BD Horizon BB515 which is part of the BD Horizon Brilliant™ Blue family of dyes. With an Ex Max near 490 nm and an Em Max near 515 nm, BD Horizon BB515 can be excited by the blue laser (488 nm) laser and detected with a 530/30 nm filter. This dye has been exclusively developed by BD Biosciences and is up to seven times brighter than FITC with less spillover into the PE channel. Due to similar excitation and emission properties, BB515, FITC, and Alexa Fluor® 488 cannot be used simultaneously. It is not recommended to use BB515 in cocktails that include Streptavidin conjugates as it may cause high background.



Two-parameter flow cytometric analysis of CD166 expression on human peripheral blood leucocytes. Human whole blood was stained with either BD Horizon™ BB515 Mouse IgG1, κ Isotype Control (Cat. No. 564515; Left Panel) or BD Horizon BB515 Mouse Anti-Human CD166 antibody (Cat. No. 565461; Right Panel). Erythrocytes were lysed with BD FACS Lysing Solution (Cat. No. 349202). Two-parameter flow cytometric contour plots showing the correlated expression of CD166 (or Ig Isotype control staining) versus side light-scatter (SSC-A) signals were derived from gated events with the forward and side light-scatter characteristics of intact leucocyte populations. Flow cytometric analysis was performed using a BD™ LSR II Flow Cytometer System.

Preparation and Storage

Store undiluted at 4°C and protected from prolonged exposure to light. Do not freeze.

The monoclonal antibody was purified from tissue culture supernatant or ascites by affinity chromatography.

The antibody was conjugated with BD Horizon™ BB515 under optimum conditions and unconjugated antibody was removed.

BD Biosciences

bdbiosciences.com

United States 877.232.8995 Canada 866.979.9408 Europe 32.2.400.98.95 Japan 0120.8555.90 Asia Pacific 65.6861.0633 Latin America/Caribbean 55.11.5185.9995

For country contact information, visit bdbiosciences.com/contact

Conditions: The information disclosed herein is not to be construed as a recommendation to use the above product in violation of any patents. BD Biosciences will not be held responsible for patent infringement or other violations that may occur with the use of our products. Purchase does not include or carry any right to resell or transfer this product either as a stand-alone product or as a component of another product. Any use of this product other than the permitted use without the express written authorization of Becton, Dickinson and Company is strictly prohibited.

For Research Use Only. Not for use in diagnostic or therapeutic procedures. Not for resale.
© 2017 BD. BD, the BD Logo and all other trademarks are property of Becton, Dickinson and Company.



Application Notes

Application

Flow cytometry	Routinely Tested
----------------	------------------

Recommended Assay Procedure:

BD™ CompBeads can be used as surrogates to assess fluorescence spillover (Compensation). When fluorochrome conjugated antibodies are bound to CompBeads, they have spectral properties very similar to cells. However, for some fluorochromes there can be small differences in spectral emissions compared to cells, resulting in spillover values that differ when compared to biological controls. It is strongly recommended that when using a reagent for the first time, users compare the spillover on cells and CompBead to ensure that BD Comp beads are appropriate for your specific cellular application.

For optimal and reproducible results, BD Horizon Brilliant Stain Buffer should be used anytime two or more BD Horizon Brilliant dyes are used in the same experiment. Fluorescent dye interactions may cause staining artifacts which may affect data interpretation. The BD Horizon Brilliant Stain Buffer was designed to minimize these interactions. More information can be found in the Technical Data Sheet of the BD Horizon Brilliant Stain Buffer (Cat. No. 563794/566349) or the BD Horizon Brilliant Stain Buffer Plus (Cat. No. 566385).

For optimal results, it is recommended to perform 2 washes after staining with antibodies. Cells may be prepared, stained with antibodies and washed twice with wash buffer per established protocols for immunofluorescence staining, prior to acquisition on a flow cytometer. Performing fewer than the recommended wash steps may lead to increased spread of the negative population.

Suggested Companion Products

Catalog Number	Name	Size	Clone
564515	BB515 Mouse IgG2a, κ Isotype Control	50 µg	G155-178
554656	Stain Buffer (FBS)	500 mL	(none)
554657	Stain Buffer (BSA)	500 mL	(none)
563794	Brilliant Stain Buffer	100 Tests	(none)
566349	Brilliant Stain Buffer	1000 Tests	(none)
566385	Brilliant Stain Buffer Plus	1000 Tests	(none)

Product Notices

1. This reagent has been pre-diluted for use at the recommended Volume per Test. We typically use 1×10^6 cells in a 100-µl experimental sample (a test).
2. An isotype control should be used at the same concentration as the antibody of interest.
3. Caution: Sodium azide yields highly toxic hydrazoic acid under acidic conditions. Dilute azide compounds in running water before discarding to avoid accumulation of potentially explosive deposits in plumbing.
4. The manufacture, use, sale, offer for sale, or import of this product is subject to one or more patents or pending applications. This product, and only in the amount purchased by buyer, may be used solely for buyer's own internal research, in a manner consistent with the accompanying product literature. No other right to use, sell or otherwise transfer (a) this product, or (b) its components is hereby granted expressly, by implication or by estoppel. Diagnostic uses require a separate license.
5. For fluorochrome spectra and suitable instrument settings, please refer to our Multicolor Flow Cytometry web page at www.bdbiosciences.com/colors.
6. BD Horizon Brilliant Stain Buffer is covered by one or more of the following US patents: 8,110,673; 8,158,444; 8,575,303; 8,354,239.
7. Please refer to <http://regdocs.bd.com> to access safety data sheets (SDS).
8. Please refer to www.bdbiosciences.com/us/s/resources for technical protocols.

References

- Aruffo A, Bowen MA, Patel DD, et al. CD6-ligand interactions: a paradigm for SRCR domain function?. *Immunol Today*. 1997; 18(10):498-504. (Biology)
- Bowen MA, Patel DD, Li X, et al. Cloning, mapping, and characterization of activated leukocyte-cell adhesion molecule (ALCAM), a CD6 ligand. *J Exp Med*. 1995; 181(6):2213-2220. (Biology)
- Bowen MA, Bajorath J, Aruffo A. CD166 (ALCAM) Workshop Panel Report. In: Kishimoto T, Tadimitsu Kishimoto .. et al., ed. *Leucocyte typing VI : white cell differentiation antigens : proceedings of the sixth international workshop and conference held in Kobe, Japan, 10-14 November 1996*. New York: Garland Pub.; 1997:459-461. (Biology)
- Kishimoto T, Tadimitsu Kishimoto .. et al., ed. *Leucocyte typing VI : white cell differentiation antigens : proceedings of the sixth international workshop and conference held in Kobe, Japan, 10-14 November 1996*. New York: Garland Pub.; 1997(Clone-specific)
- Patel DD, Wee SF, Whichard LP, et al. Identification and characterization of a 100-kD ligand for CD6 on human thymic epithelial cells. *J Exp Med*. 1995; 181(4):1563-1568. (Biology)