

## Technical Data Sheet

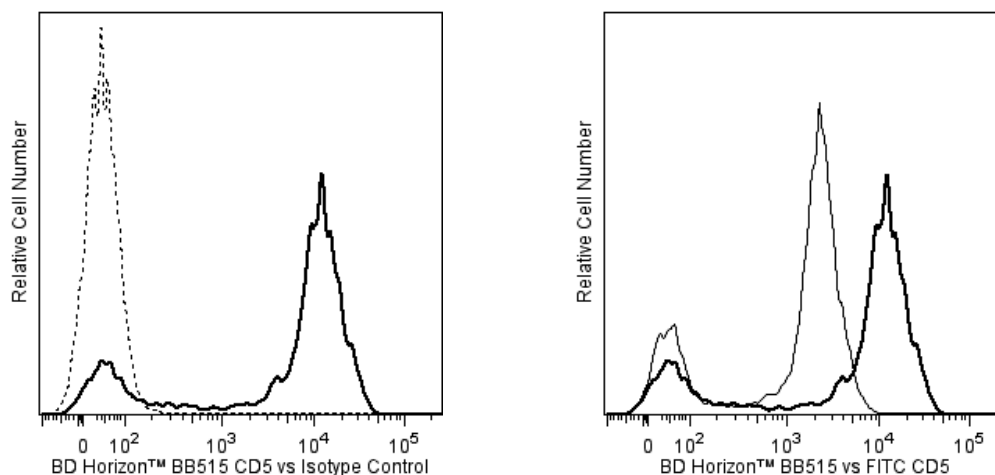
**BB515 Mouse Anti-Human CD5****Product Information**

<b>Material Number:</b>	<b>564647</b>
<b>Alternate Name:</b>	CD5 antigen (p56-62); T1; Tp67; LEU1; Lymphocyte antigen T1/Leu-1
<b>Size:</b>	100 Tests
<b>Vol. per Test:</b>	5 µl
<b>Clone:</b>	UCHT2
<b>Immunogen:</b>	Human T cells
<b>Isotype:</b>	Mouse (BALB/c) IgG1, κ
<b>Reactivity:</b>	QC Testing: Human
<b>Workshop:</b>	I T4; III T094, T518
<b>Storage Buffer:</b>	Aqueous buffered solution containing ≤0.09% sodium azide.

**Description**

The UCHT2 monoclonal antibody specifically binds to CD5. CD5 is a 67 kDa single-chain, type 1 transmembrane glycoprotein expressed on most thymocytes, the majority of peripheral T lymphocytes and a subpopulation of B cells. CD72 has been shown to be the natural ligand for CD5. CD5+ B cells produce polyreactive antibodies (mostly IgM).

The antibody was conjugated to BD Horizon BB515 which is part of the BD Horizon Brilliant™ Blue family of dyes. With an Ex Max near 490 nm and an Em Max near 515 nm, BD Horizon BB515 can be excited by the blue laser (488 nm) laser and detected with a 530/30 nm filter. This dye has been exclusively developed by BD Biosciences and is up to seven times brighter than FITC with less spillover into the PE channel. Due to similar excitation and emission properties, BB515, FITC, and Alexa Fluor® 488 cannot be used simultaneously. It is not recommended to use BB515 in cocktails that include Streptavidin conjugates as it may cause high background.



**Flow cytometric analysis of CD5 expression on human peripheral blood lymphocytes - Staining comparisons between BD Horizon™ BB515- and FITC-conjugated antibodies.** Whole blood was stained with either BD Horizon BB515 Mouse IgG1, κ Isotype Control (Cat. No. 564416; dashed line histogram) or BD Horizon BB515 Mouse Anti-Human CD5 antibody (Cat. No. 564647/564648; bold solid line histogram). Alternatively, cells were stained with FITC Anti-Human CD5 antibody (Cat. No. 555352/561896; thin solid line histogram). The erythrocytes were lysed with BD FACS™ Lysing Solution (Cat. No. 349202). Overlaid histograms are shown to facilitate staining comparisons between: BB515 Anti-CD5 antibody versus its Ig Isotype Control (Left Panel), and BB515 Anti-CD5 antibody versus FITC Anti-CD5 antibody (Right Panel). The fluorescence histograms showing CD5 expression (or Ig Isotype control staining) were derived from gated events with the forward and side light-scatter characteristics of intact lymphocytes. Flow cytometric analysis was performed using a BD™ LSR II Flow Cytometer System.

**Preparation and Storage**

Store undiluted at 4°C and protected from prolonged exposure to light. Do not freeze.

The monoclonal antibody was purified from tissue culture supernatant or ascites by affinity chromatography.

The antibody was conjugated with BD Horizon™ BB515 under optimum conditions and unconjugated antibody was removed.

**BD Biosciences**

bdbiosciences.com

United States 877.232.8995 Canada 866.979.9408 Europe 32.2.400.98.95 Japan 0120.8555.90 Asia Pacific 65.6861.0633 Latin America/Caribbean 55.11.5185.9995

For country contact information, visit [bdbiosciences.com/contact](http://bdbiosciences.com/contact)

*Conditions: The information disclosed herein is not to be construed as a recommendation to use the above product in violation of any patents. BD Biosciences will not be held responsible for patent infringement or other violations that may occur with the use of our products. Purchase does not include or carry any right to resell or transfer this product either as a stand-alone product or as a component of another product. Any use of this product other than the permitted use without the express written authorization of Becton, Dickinson and Company is strictly prohibited.*

For Research Use Only. Not for use in diagnostic or therapeutic procedures. Not for resale.  
© 2017 BD. BD, the BD Logo and all other trademarks are property of Becton, Dickinson and Company.



## Application Notes

### Application

Flow cytometry

Routinely Tested

### Recommended Assay Procedure:

BD™ CompBeads can be used as surrogates to assess fluorescence spillover (Compensation). When fluorochrome conjugated antibodies are bound to CompBeads, they have spectral properties very similar to cells. However, for some fluorochromes there can be small differences in spectral emissions compared to cells, resulting in spillover values that differ when compared to biological controls. It is strongly recommended that when using a reagent for the first time, users compare the spillover on cells and CompBead to ensure that BD Comp beads are appropriate for your specific cellular application.

For optimal and reproducible results, BD Horizon Brilliant Stain Buffer should be used anytime two or more BD Horizon Brilliant dyes are used in the same experiment. Fluorescent dye interactions may cause staining artifacts which may affect data interpretation. The BD Horizon Brilliant Stain Buffer was designed to minimize these interactions. More information can be found in the Technical Data Sheet of the BD Horizon Brilliant Stain Buffer (Cat. No. 563794/566349) or the BD Horizon Brilliant Stain Buffer Plus (Cat. No. 566385).

For optimal results, it is recommended to perform 2 washes after staining with antibodies. Cells may be prepared, stained with antibodies and washed twice with wash buffer per established protocols for immunofluorescence staining, prior to acquisition on a flow cytometer. Performing fewer than the recommended wash steps may lead to increased spread of the negative population.

### Suggested Companion Products

Catalog Number	Name	Size	Clone
555352	FITC Mouse Anti-Human CD5	100 Tests	UCHT2
561896	FITC Mouse Anti-Human CD5	25 Tests	UCHT2
349202	BD FACS™ Lysing Solution	100 mL	(none)
555899	Lysing Buffer	100 mL	(none)
563794	Brilliant Stain Buffer	100 Tests	(none)
554656	Stain Buffer (FBS)	500 mL	(none)
554657	Stain Buffer (BSA)	500 mL	(none)
564416	BB515 Mouse IgG1, κ Isotype Control	100 µg	X40
564648	BB515 Mouse Anti-Human CD5	25 Tests	UCHT2
566385	Brilliant Stain Buffer Plus	1000 Tests	(none)
566349	Brilliant Stain Buffer	1000 Tests	(none)

### Product Notices

1. This reagent has been pre-diluted for use at the recommended Volume per Test. We typically use  $1 \times 10^6$  cells in a 100-µl experimental sample (a test).
2. An isotype control should be used at the same concentration as the antibody of interest.
3. Caution: Sodium azide yields highly toxic hydrazoic acid under acidic conditions. Dilute azide compounds in running water before discarding to avoid accumulation of potentially explosive deposits in plumbing.
4. For fluorochrome spectra and suitable instrument settings, please refer to our Multicolor Flow Cytometry web page at [www.bdbiosciences.com/colors](http://www.bdbiosciences.com/colors).
5. Please refer to [www.regdocs.bd.com](http://www.regdocs.bd.com) to access safety data sheets (SDS).
6. BD Horizon Brilliant Stain Buffer is covered by one or more of the following US patents: 8,110,673; 8,158,444; 8,575,303; 8,354,239.
7. Please refer to [www.bdbiosciences.com/pharming/protocols](http://www.bdbiosciences.com/pharming/protocols) for technical protocols.

### References

Bernard A, Boumsell L, Dausset J, Milstein C, Schlossman SF, ed. *Leukocyte Typing*. New York: Springer-Verlag; 1984:1-814. (Clone-specific: Flow cytometry)

Bernard A, Boumsell L, Hill C. Joint report of the first international workshop on human leucocyte differentiation antigens by the investigators of the participating laboratories: T2 protocol. In: Bernard A. A. Bernard .. et al., ed. *Leucocyte typing : human leucocyte differentiation antigens detected by monoclonal antibodies : specification, classification, nomenclature = Typage leucocytaire : antigènes de différenciation leucocytaire humains révélés par les anticorps monoclonaux : "Rapports des études communes"*. Berlin New York: Springer-Verlag; 1984:25-60. (Clone-specific: Flow cytometry)

Lankester AC, van Schijndel GM, Cordell JL, van Noesel CJ, van Lier RA. CD5 is associated with the human B cell antigen receptor complex. *Eur J Immunol*. 1994; 24(4):812-816. (Biology)

Lydyard PM, Lamour A, MacKenzie LE, Jamin C, Mageed RA, Youinou P. CD5+ B cells and the immune system. *Immunol Lett*. 1993; 38(2):159-166. (Biology: Flow cytometry)

McMichael AJ. A.J. McMichael .. et al., ed. *Leucocyte typing III : white cell differentiation antigens*. Oxford New York: Oxford University Press; 1987:1-1050. (Clone-specific: Flow cytometry)

McMichael AJ, Gotch FM. T-cell antigens: new and previously defined clusters. In: McMichael AJ. A.J. McMichael .. et al., ed. *Leucocyte typing III : white cell differentiation antigens*. Oxford New York: Oxford University Press; 1987:31-62. (Clone-specific: Flow cytometry, Immunoprecipitation)

Wallace DL, Beverley PC. Phenotypic changes associated with activation of CD45RA+ and CD45RO+ T cells. *Immunology*. 1990; 69(3):460-467. (Clone-specific: Flow cytometry)

In: Zola H. *Leukocyte and stromal cell molecules : the CD markers*. Hoboken, N.J.: Wiley-Liss; 2007:49-50. (Biology)