

Technical Data Sheet

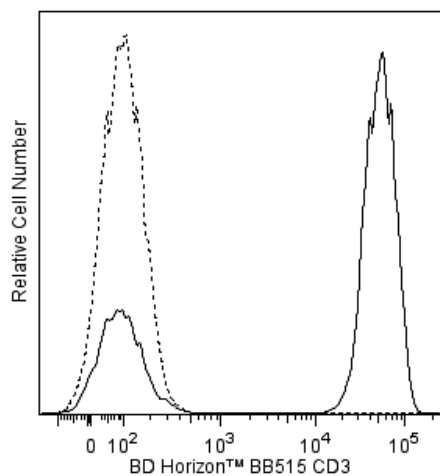
BB515 Mouse Anti-Human CD3**Product Information**

Material Number:	564560
Alternate Name:	CD3-epsilon; CD3E; Leu4; T-cell surface antigen T3/Leu-4 epsilon chain; T3E
Size:	100 Tests
Vol. per Test:	5 µl
Clone:	SK7 (also known as Leu-4)
Immunogen:	Human Thymocytes
Isotype:	Mouse (BALB/c) IgG1, κ
Reactivity:	QC Testing: Human
Workshop:	II T118; III T492
Storage Buffer:	Aqueous buffered solution containing ≤0.09% sodium azide.

Description

The SK7 (Leu-4) monoclonal antibody specifically binds to the epsilon chain of the CD3 antigen/T-cell antigen receptor (TCR) complex. This complex is composed of at least six proteins that range in molecular weight from 20 to 30 kDa. The antigen recognized by CD3 antibodies is noncovalently associated with either α/β or γ/δ TCR (70 to 90 kDa). The CD3 antigen is present on 61% to 85% of normal peripheral blood lymphocytes 60% to 85% of thymocytes and on Purkinje cells in the cerebellum. The soluble form of this antibody has a mitogenic effect on most peripheral blood T lymphocytes, provided appropriate functional monocytes are present.

The antibody was conjugated to BD Horizon BB515 which is part of the BD Horizon Brilliant™ Blue family of dyes. With an Ex Max near 490 nm and an Em Max near 515 nm, BD Horizon BB515 can be excited by the blue laser (488 nm) laser and detected with a 530/30 nm filter. This dye has been exclusively developed by BD Biosciences and is up to seven times brighter than FITC with less spillover into the PE channel. Due to similar excitation and emission properties, BB515, FITC, and Alexa Fluor® 488 cannot be used simultaneously. It is not recommended to use BB515 in cocktails that include Streptavidin conjugates as it may cause high background.



Flow cytometric analysis of CD3 expression on human peripheral blood lymphocytes. Whole blood was stained with either BD Horizon™ BB515 Mouse IgG1, κ Isotype Control (Cat. No. 564416; dashed line histogram) or BD Horizon BB515 Mouse Anti-Human CD3 antibody (Cat. No. 564560/564561; solid line histogram). Erythrocytes were lysed with BD FACS™ Lysing Solution (Cat. No. 349202). The fluorescence histograms were derived from gated events with the forward and side light-scatter characteristics of intact lymphocytes. Flow cytometric analysis was performed using a BD™ LSR II Flow Cytometer System.

Preparation and Storage

Store undiluted at 4°C and protected from prolonged exposure to light. Do not freeze.

The monoclonal antibody was purified from tissue culture supernatant or ascites by affinity chromatography.

The antibody was conjugated with BD Horizon™ BB515 under optimum conditions and unconjugated antibody was removed.

Application Notes**Application**

Flow cytometry

Routinely Tested

BD Biosciences

bdbiosciences.com

United States 877.232.8995 Canada 866.979.9408 Europe 32.2.400.98.95 Japan 0120.8555.90 Asia Pacific 65.6861.0633 Latin America/Caribbean 55.11.5185.9995

For country contact information, visit bdbiosciences.com/contact

Conditions: The information disclosed herein is not to be construed as a recommendation to use the above product in violation of any patents. BD Biosciences will not be held responsible for patent infringement or other violations that may occur with the use of our products. Purchase does not include or carry any right to resell or transfer this product either as a stand-alone product or as a component of another product. Any use of this product other than the permitted use without the express written authorization of Becton, Dickinson and Company is strictly prohibited.

For Research Use Only. Not for use in diagnostic or therapeutic procedures. Not for resale.
© 2017 BD. BD, the BD Logo and all other trademarks are property of Becton, Dickinson and Company.

564560 Rev. 2



Recommended Assay Procedure:

BD™ CompBeads can be used as surrogates to assess fluorescence spillover (Compensation). When fluorochrome conjugated antibodies are bound to CompBeads, they have spectral properties very similar to cells. However, for some fluorochromes there can be small differences in spectral emissions compared to cells, resulting in spillover values that differ when compared to biological controls. It is strongly recommended that when using a reagent for the first time, users compare the spillover on cells and CompBead to ensure that BD Comp beads are appropriate for your specific cellular application.

For optimal and reproducible results, BD Horizon Brilliant Stain Buffer should be used anytime two or more BD Horizon Brilliant dyes are used in the same experiment. Fluorescent dye interactions may cause staining artifacts which may affect data interpretation. The BD Horizon Brilliant Stain Buffer was designed to minimize these interactions. More information can be found in the Technical Data Sheet of the BD Horizon Brilliant Stain Buffer (Cat. No. 563794/566349) or the BD Horizon Brilliant Stain Buffer Plus (Cat. No. 566385).

For optimal results, it is recommended to perform 2 washes after staining with antibodies. Cells may be prepared, stained with antibodies and washed twice with wash buffer per established protocols for immunofluorescence staining, prior to acquisition on a flow cytometer. Performing fewer than the recommended wash steps may lead to increased spread of the negative population.

Suggested Companion Products

Catalog Number	Name	Size	Clone
564416	BB515 Mouse IgG1, κ Isotype Control	100 μ g	X40
564561	BB515 Mouse Anti-Human CD3	25 Tests	SK7
563794	Brilliant Stain Buffer	100 Tests	(none)
349202	BD FACS™ Lysing Solution	100 mL	(none)
555899	Lysing Buffer	100 mL	(none)
554656	Stain Buffer (FBS)	500 mL	(none)
554657	Stain Buffer (BSA)	500 mL	(none)
566349	Brilliant Stain Buffer	1000 Tests	(none)
566385	Brilliant Stain Buffer Plus	1000 Tests	(none)

Product Notices

1. This reagent has been pre-diluted for use at the recommended Volume per Test. We typically use 1×10^6 cells in a 100- μ l experimental sample (a test).
2. An isotype control should be used at the same concentration as the antibody of interest.
3. Caution: Sodium azide yields highly toxic hydrazoic acid under acidic conditions. Dilute azide compounds in running water before discarding to avoid accumulation of potentially explosive deposits in plumbing.
4. For fluorochrome spectra and suitable instrument settings, please refer to our Multicolor Flow Cytometry web page at www.bdbiosciences.com/colors.
5. BD Horizon Brilliant Stain Buffer is covered by one or more of the following US patents: 8,110,673; 8,158,444; 8,575,303; 8,354,239.
6. Please refer to www.regdocs.bd.com to access safety data sheets (SDS).
7. Please refer to www.bdbiosciences.com/pharmingen/protocols for technical protocols.

References

- Ernst DN, Shih CC. CD3 complex. *J Biol Regul Homeost Agents*. 2000; 14(3):226-229. (Biology)
- Knowles RW. Immunochemical analysis of the T-cell-specific antigens. In: Reinherz EL, Ellis L, Reinherz .. et al., ed. *Leukocyte typing II*. New York: Springer-Verlag; 1986:259-288. (Clone-specific: Immunoprecipitation)
- Kan EA, Wang CY, Wang LC, Evans RL. Noncovalently bonded subunits of 22 and 28 kd are rapidly internalized by T cells reacted with anti-Leu-4 antibody. *J Immunol*. 1983; 131(2):536-539. (Clone-specific: Flow cytometry, Functional assay, Immunofluorescence, Immunoprecipitation)
- Kaneoka H, Perez-Rojas G, Sasasaki T, Benike CJ, Engleman EG. Human T lymphocyte proliferation induced by a pan-T monoclonal antibody (anti-Leu 4): heterogeneity of response is a function of monocytes. *J Immunol*. 1983; 131(1):158-164. (Clone-specific: Activation, Functional assay, Stimulation)
- Knapp W. W. Knapp .. et al., ed. *Leukocyte typing IV : white cell differentiation antigens*. Oxford New York: Oxford University Press; 1989:1-1182. (Biology)
- Lanier LL, Allison JP, Phillips JH. Correlation of cell surface antigen expression on human thymocytes by multi-color flow cytometric analysis: implications for differentiation. *J Immunol*. 1986; 137(8):2501-2507. (Clone-specific: Immunoprecipitation)
- Ledbetter JA, Evans RL, Lipinski M, Cunningham-Rundles C, Good RA, Herzenberg LA. Evolutionary conservation of surface molecules that distinguish T lymphocyte helper/inducer and cytotoxic/suppressor subpopulations in mouse and man. *J Exp Med*. 1981; 153(2):310-323. (Clone-specific: Immunoprecipitation)
- Ledbetter JA, Frankel AE, Herzenberg. Human Leu T-cell differentiation antigens: quantitative expression on normal lymphoid cells and cell lines. In: Hammerling G, Hammerling U, Kearney J, ed. *Monoclonal Antibodies and T Cell Hybridomas: Perspectives and Technical News*. New York: Elsevier/North Holland Biomedical Press; 1981:16-22. (Clone-specific: Flow cytometry, Immunoprecipitation)
- McMichael AJ. A.J. McMichael .. et al., ed. *Leukocyte typing III : white cell differentiation antigens*. Oxford New York: Oxford University Press; 1987:1-1050. (Clone-specific: Flow cytometry)
- Schlossman SF, Stuart F, Schlossman .. et al., ed. *Leukocyte typing V : white cell differentiation antigens : proceedings of the fifth international workshop and conference held in Boston, USA, 3-7 November, 1993*. Oxford: Oxford University Press; 1995(Biology)
- Kurrie R, Seyfert W, Trautwein A, Seiler FR. T cell activation by CD3 antibodies. In: Reinherz EL, Ellis L, Reinherz .. et al., ed. *Leukocyte typing II*. New York: Springer-Verlag; 1986:137-146. (Clone-specific: Activation, Flow cytometry, Functional assay, Stimulation)
- van Dongen JMM, Krissansen GW, Wolvers-Tettero ILM, et al. Cytoplasmic expression of the CD3 antigen as a diagnostic marker for immature T-cell malignancies. *Blood*. 1988; 71(3):603-612. (Clone-specific: Immunofluorescence, Western blot)
- Zola H. *Leukocyte and stromal cell molecules : the CD markers*. Hoboken, N.J.: Wiley-Liss; 2007(Biology)