

Technical Data Sheet

BB515 Rat Anti-Mouse CD8a

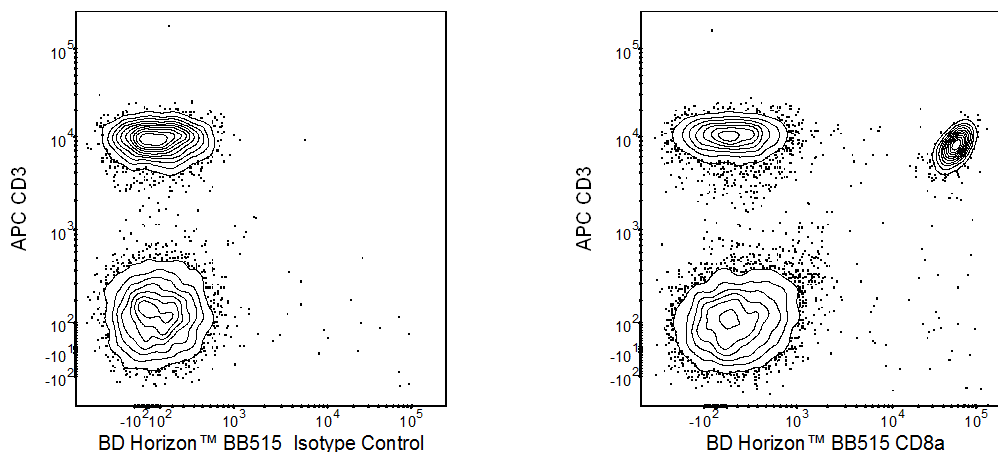
Product Information

Material Number:	564422
Alternate Name:	CD8a; CD8 alpha chain; Ly-2; Lyt2; Lyt-2; Ly-35; Ly-B
Size:	100 µg
Concentration:	0.2 mg/ml
Clone:	53-6.7
Immunogen:	Mouse Spleen Cells or Thymocyte Membranes
Isotype:	Rat (LOU) IgG2a, κ
Reactivity:	QC Testing: Mouse
Storage Buffer:	Aqueous buffered solution containing ≤0.09% sodium azide.

Description

The 53-6.7 monoclonal antibody specifically binds to the 38 kDa α and 34 kDa α' chains of the CD8 differentiation antigen (Ly-2 or Lyt-2) of all mouse strains tested. The CD8 α and α' chains (CD8a) form heterodimers with the CD8 β chain (CD8b, Ly-3, or Lyt-3) on the surface of most thymocytes. A subpopulation of mature T lymphocytes (i.e., MHC class I-restricted T cells, including most T suppressor/cytotoxic cells) expresses almost exclusively the CD8 $\alpha\beta$ heterodimer. Subsets of $\gamma\delta$ TCR-bearing T cells, intestinal intraepithelial lymphocytes, and dendritic cells express CD8a without CD8b. It has been suggested that the expression of the CD8a/CD8b heterodimer is restricted to T lymphocytes which matured in the thymus or in an extrathymic environment that had been influenced by thymus-initiated neuroendocrine signals. CD8 is an antigen coreceptor on the T-cell surface which interacts with MHC class I molecules on antigen-presenting cells or epithelial cells. It participates in T-cell activation through its association with the T-cell receptor complex and protein tyrosine kinase lck (p56 [lck]). The CD8 α and α' chains arise from alternatively spliced messengers of a single CD8a gene. The longer α form associates with p56 [lck] via a CXCP motif in its cytoplasmic domain, which it shares with CD4, but not with CD8b. The truncated α' chain is unable to associate with p56 [lck], and it may function to attenuate the CD8-mediated costimulatory signal during intrathymic T-cell maturation. In vivo and in vitro treatment with 53-6.7 mAb has reportedly been effective at depleting CD8+ peripheral T lymphocytes. The 53-6.7 antibody has also been reported to cross-react with CD8 α - and α' -like polypeptides on subsets of thymic and peripheral lymphocytes in the Egyptian toad, *Bufo regularis*.

The antibody was conjugated to BD Horizon BB515 which is part of the BD Horizon Brilliant™ Blue family of dyes. With an Ex Max near 490 nm and an Em Max near 515 nm, BD Horizon BB515 can be excited by the blue laser (488 nm) laser and detected with a 530/30 nm filter. This dye has been exclusively developed by BD Biosciences and is up to seven times brighter than FITC with less spillover into the PE channel. Due to similar excitation and emission properties, BB515, FITC, and Alexa Fluor® 488 cannot be used simultaneously. It is not recommended to use BB515 in cocktails that include Streptavidin conjugates as it may cause high background.



Two-color flow cytometric analysis of CD8a expression on mouse splenocytes. Mouse splenic leucocytes were preincubated with Purified Rat Anti-Mouse CD16/CD32 antibody (Mouse BD Fc Block™) (Cat. No. 553141/553142). The cells were then stained with APC Hamster Anti-Mouse CD3e (Cat. No. 561826/553066) and either BD Horizon™ BB515 Rat IgG2a, κ Isotype Control (Cat. No. 564418; Left Panel) or BD Horizon BB515 Rat Anti-Mouse CD8a antibody (Cat. No. 564422/564459; Right Panel) antibodies. The two-color fluorescence contour plots showing the correlated expression patterns of CD8a (or IgG isotype control staining) versus CD3e were derived from gated events with the forward and side light-scatter characteristic of viable splenic leucocytes. Flow cytometry was performed using a BD™ LSR II Flow Cytometer System.

BD Biosciences

bdbiosciences.com

United States 877.232.8995 Canada 866.979.9408 Europe 32.2.400.98.95 Japan 0120.8555.90 Asia Pacific 65.6861.0633 Latin America/Caribbean 55.11.5185.9995

For country contact information, visit bdbiosciences.com/contact

Conditions: The information disclosed herein is not to be construed as a recommendation to use the above product in violation of any patents. BD Biosciences will not be held responsible for patent infringement or other violations that may occur with the use of our products. Purchase does not include or carry any right to resell or transfer this product either as a stand-alone product or as a component of another product. Any use of this product other than the permitted use without the express written authorization of Becton, Dickinson and Company is strictly prohibited.

For Research Use Only. Not for use in diagnostic or therapeutic procedures. Not for resale.
© 2017 BD. BD, the BD Logo and all other trademarks are property of Becton, Dickinson and Company.



Preparation and Storage

Store undiluted at 4°C and protected from prolonged exposure to light. Do not freeze.

The monoclonal antibody was purified from tissue culture supernatant or ascites by affinity chromatography.

The antibody was conjugated with BD Horizon™ BB515 under optimum conditions and unconjugated antibody was removed.

Application Notes

Application

Flow cytometry

Routinely Tested

Recommended Assay Procedure:

BD™ CompBeads can be used as surrogates to assess fluorescence spillover (Compensation). When fluorochrome conjugated antibodies are bound to CompBeads, they have spectral properties very similar to cells. However, for some fluorochromes there can be small differences in spectral emissions compared to cells, resulting in spillover values that differ when compared to biological controls. It is strongly recommended that when using a reagent for the first time, users compare the spillover on cells and CompBead to ensure that BD Comp beads are appropriate for your specific cellular application.

For optimal results, it is recommended to perform 2 washes after staining with antibodies. Cells may be prepared, stained with antibodies and washed twice with wash buffer per established protocols for immunofluorescence staining, prior to acquisition on a flow cytometer. Performing fewer than the recommended wash steps may lead to increased spread of the negative population.

For optimal and reproducible results, BD Horizon Brilliant Stain Buffer should be used anytime two or more BD Horizon Brilliant dyes are used in the same experiment. Fluorescent dye interactions may cause staining artifacts which may affect data interpretation. The BD Horizon Brilliant Stain Buffer was designed to minimize these interactions. More information can be found in the Technical Data Sheet of the BD Horizon Brilliant Stain Buffer (Cat. No. 563794/566349) or the BD Horizon Brilliant Stain Buffer Plus (Cat. No. 566385).

Suggested Companion Products

Catalog Number	Name	Size	Clone
554656	Stain Buffer (FBS)	500 mL	(none)
554657	Stain Buffer (BSA)	500 mL	(none)
564418	BB515 Rat IgG2a, κ Isotype Control	0.1 mg	R35-95
564459	BB515 Rat Anti-Mouse CD8a	25 µg	53-6.7
561826	APC Hamster Anti-Mouse CD3e	25 µg	145-2C11
553066	APC Hamster Anti-Mouse CD3e	0.1 mg	145-2C11
553141	Purified Rat Anti-Mouse CD16/CD32 (Mouse BD Fc Block™)	0.1 mg	2.4G2
553142	Purified Rat Anti-Mouse CD16/CD32 (Mouse BD Fc Block™)	0.5 mg	2.4G2
555899	Lysing Buffer	100 mL	(none)
349202	BD FACSTM Lysing Solution	100 mL	(none)
563794	Brilliant Stain Buffer	100 Tests	(none)

Product Notices

1. Since applications vary, each investigator should titrate the reagent to obtain optimal results.
2. An isotype control should be used at the same concentration as the antibody of interest.
3. Caution: Sodium azide yields highly toxic hydrazoic acid under acidic conditions. Dilute azide compounds in running water before discarding to avoid accumulation of potentially explosive deposits in plumbing.
4. For fluorochrome spectra and suitable instrument settings, please refer to our Multicolor Flow Cytometry web page at www.bdbiosciences.com/colors.
5. BD Horizon Brilliant Stain Buffer is covered by one or more of the following US patents: 8,110,673; 8,158,444; 8,575,303; 8,354,239.
6. Please refer to www.bdbiosciences.com/pharming/protocols for technical protocols.

References

Bierer BE, Sleckman BP, Ratnoff SJ. The biologic roles of CD2, CD4, and CD8 in T-cell activation. *Annu Rev Immunol.* 1989; 7:579-599. (Biology)

Fujiura Y, Kawaguchi M, Kondo Y, et al. Development of CD8 alpha alpha+ intestinal intraepithelial T cells in beta 2-microglobulin- and/or TAP1-deficient mice. *J Immunol.* 1996; 156(8):2710-2715. (Clone-specific: Flow cytometry)

Hathcock KS. T cell depletion by cytotoxic elimination. *Curr Protoc Immunol.* 1991; 1:3.4.1-3.4.3. (Clone-specific: Cell separation, Depletion, Flow cytometry)

Kruisbeek AM, Shevach EM. Proliferative assays for T cell function. *Curr Protoc Immunol.* 2004; 3:3.12.1-3.12.14. (Clone-specific: Depletion, In vivo exacerbation)

Ledbetter JA, Herzenberg LA. Xenogeneic monoclonal antibodies to mouse lymphoid differentiation antigens. *Immunol Rev.* 1979; 47:63-90. (Immunogen: Flow cytometry, Immunofluorescence, Immunoprecipitation)

Ledbetter JA, Rouse RV, Micklem HS, Herzenberg LA. T cell subsets defined by expression of Lyt-1,2,3 and Thy-1 antigens. Two-parameter immunofluorescence and cytotoxicity analysis with monoclonal antibodies modifies current views. *J Exp Med.* 1980; 152(2):280-295. (Immunogen: Flow cytometry)

Ledbetter JA, Seaman WE, Tsu TT, Herzenberg LA. Lyt-2 and Lyt-3 antigens are on two different polypeptide subunits linked by disulfide bonds. Relationship of subunits to T cell cytolytic activity. *J Exp Med.* 1981; 153(6):1503-1516. (Clone-specific: Blocking, Flow cytometry, Immunoprecipitation, Inhibition)

LeFrancois L. Extrathymic differentiation of intraepithelial lymphocytes: generation of a separate and unequal T-cell repertoire. *Immunol Today.* 1991; 12(12):436-438. (Biology)

Leishman AJ, Naidenko OV, Attinger A, et al. T cell responses modulated through interaction between CD8alphaalpha and the nonclassical MHC class I molecule, TL. *Science.* 2001; 294(5548):1848-1849. (Clone-specific: Blocking, Flow cytometry)

MacDonald HR, Schreyer M, Howe RC, Bron C. Selective expression of CD8 alpha (Ly-2) subunit on activated thymic gamma/delta cells. *Eur J Immunol.* 1990; 20(4):927-930. (Biology)

Nakayama K, Nakayama K, Negishi I, et al. Requirement for CD8 beta chain in positive selection of CD8-lineage T cells. *Science.* 1994; 263(5150):1131-1133. (Biology)

Sydora BC, Brossay L, Hagenbaugh A, Kronenberg M, Cheroutre H. TAP-independent selection of CD8+ intestinal intraepithelial lymphocytes. *J Immunol.* 1996; 156(11):4209-4216. (Clone-specific: Flow cytometry)

Takahashi K, Nakata M, Tanaka T, et al. CD4 and CD8 regulate interleukin 2 responses of T cells. *Proc Natl Acad Sci U S A.* 1992; 89(12):5557-5561. (Clone-specific: Immunoprecipitation, Inhibition)

van Ewijk W, van Soest PL, van den Engh GJ. Fluorescence analysis and anatomic distribution of mouse T lymphocyte subsets defined by monoclonal antibodies to the antigens Thy-1, Lyl-1, Lyl-2, and T-200. *J Immunol.* 1981; 127(6):2594-2604. (Clone-specific: Flow cytometry, Immunofluorescence, Immunohistochemistry)

Vremec D, Zorbas M, Scollay R, et al. The surface phenotype of dendritic cells purified from mouse thymus and spleen: investigation of the CD8 expression by a subpopulation of dendritic cells. *J Exp Med.* 1992; 176(1):47-58. (Clone-specific: Flow cytometry)

Wang J, Klein JR. Thymus-neuroendocrine interactions in extrathymic T cell development. *Science.* 1994; 265(5180):1860-1862. (Biology)

Wu L, Vremec D, Ardavin C, et al. Mouse thymus dendritic cells: kinetics of development and changes in surface markers during maturation. *Eur J Immunol.* 1995; 25(2):418-425. (Biology)

Zamoyska R, Derham P, Gorman SD, et al. Inability of CD8 alpha' polypeptides to associate with p56lck correlates with impaired function in vitro and lack of expression in vivo. *Nature.* 1989; 342(6247):278-281. (Biology)