

## Technical Data Sheet

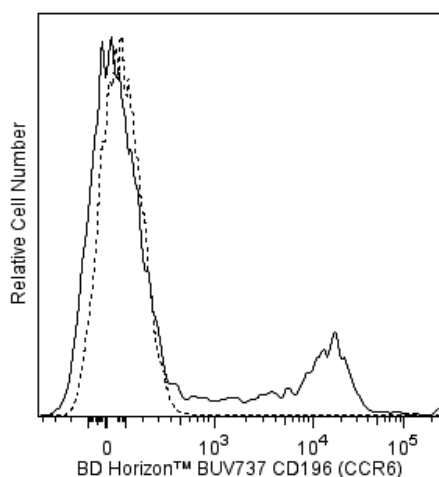
**BUV737 Mouse Anti-Human CD196 (CCR6)****Product Information**

<b>Material Number:</b>	564377
<b>Alternate Name:</b>	BN-1; C-C CKR-6; C-C chemokine receptor type 6; CC-CKR-6; CCR-6
<b>Size:</b>	50 Tests
<b>Vol. per Test:</b>	5 µl
<b>Clone:</b>	11A9
<b>Immunogen:</b>	Human CD196/CCR6 Peptide
<b>Isotype:</b>	Mouse IgG1, κ
<b>Reactivity:</b>	QC Testing: Human Tested in Development: Rhesus, Cynomolgus, Baboon
<b>Workshop:</b>	IX 48
<b>Storage Buffer:</b>	Aqueous buffered solution containing ≤0.09% sodium azide.

**Description**

The 11A9 monoclonal antibody specifically binds to CD196, which is also known as CCR6. CCR6 is a seven-transmembrane, G-protein-coupled, glycoprotein receptor that is a member of the beta chemokine receptor family. The human CCR6 gene has been mapped to chromosome 6q27. CCR6 is a receptor for the CC chemokine CCL20/MIP-3alpha/LARC/Exodus and also binds with lower affinity to and mediates responses to beta-defensin2/hBD-2. CCR6 is predominantly expressed by B lymphocytes, certain subsets of effector and memory T cells and by immature dendritic cells but not by monocytes, NK cells, or granulocytes. Skin-homing CLA (Cutaneous Lymphocyte Antigen)-positive memory T cells, Th1 cells, regulatory T cells and IL-17A-producing Th17 cells predominantly express high levels of CCR6. CCR6 mediates the trafficking of T, B, and dendritic cells to epithelial sites near the skin and mucosal surfaces during inflammatory and immunological responses. An N-terminal peptide of human CCR6 was used as an immunogen to generate the 11A9 hybridoma. The 11A9 antibody does not cross-react with human CCR1, CCR2, CCR3, CCR4, CCR5, CCR7, CCR8, CCR9, CXCR1, CXCR2, CXCR3, CXCR4 and CXCR5 receptors. This antibody is NOT a neutralizing antibody.

The antibody was conjugated to BD Horizon BUV737 which is part of the BD Horizon Brilliant™ Ultraviolet family of dyes. This dye is a tandem fluorochrome with an Ex Max near 350 nm and an Em Max near 737 nm. BD Horizon Brilliant BUV737 can be excited by the ultraviolet laser (355 nm) and detected with a 740/35 nm filter. Due to the excitation of the acceptor dye by the red laser line, there may be significant spillover into red laser detectors with filters in the 700-720 nm range.



**Flow cytometric analysis of CD196 (CCR6) expression on human peripheral blood cells.** Human whole blood was stained with either BD Horizon™ BUV737 Mouse IgG1, κ Isotype Control (Cat. No. 564299; dashed line histogram) or BD Horizon BUV737 Mouse Anti-Human CD196 (CCR6) antibody (Cat. No. 564377; solid line histogram). The erythrocytes were lysed with BD Pharm Lyse™ Lysing Buffer (Cat. No. 555899). The fluorescence histograms were derived from events with the forward and side light-scatter characteristics of viable lymphocytes. Flow cytometric analysis was performed using a BD™ LSR II Flow Cytometer System.

**Preparation and Storage**

Store undiluted at 4°C and protected from prolonged exposure to light. Do not freeze.

The monoclonal antibody was purified from tissue culture supernatant or ascites by affinity chromatography.

The antibody was conjugated with BD Horizon BUV737 under optimum conditions, and unconjugated antibody and free BD Horizon BUV737 were removed.

**Application Notes****Application**

Flow cytometry

Routinely Tested

**BD Biosciences**

bdbiosciences.com

United States 877.232.8995    Canada 866.979.9408    Europe 32.2.400.98.95    Japan 0120.8555.90    Asia Pacific 65.6861.0633    Latin America/Caribbean 55.11.5185.9995

For country contact information, visit [bdbiosciences.com/contact](http://bdbiosciences.com/contact)

*Conditions: The information disclosed herein is not to be construed as a recommendation to use the above product in violation of any patents. BD Biosciences will not be held responsible for patent infringement or other violations that may occur with the use of our products. Purchase does not include or carry any right to resell or transfer this product either as a stand-alone product or as a component of another product. Any use of this product other than the permitted use without the express written authorization of Becton, Dickinson and Company is strictly prohibited.*

For Research Use Only. Not for use in diagnostic or therapeutic procedures. Not for resale.  
© 2017 BD. BD, the BD Logo and all other trademarks are property of Becton, Dickinson and Company.



### Recommended Assay Procedure:

BD™ CompBeads can be used as surrogates to assess fluorescence spillover (Compensation). When fluorochrome conjugated antibodies are bound to BD CompBeads, they have spectral properties very similar to cells. However, for some fluorochromes there can be small differences in spectral emissions compared to cells, resulting in spillover values that differ when compared to biological controls. It is strongly recommended that when using a reagent for the first time, users compare the spillover on cells and BD CompBead to ensure that BD CompBeads are appropriate for your specific cellular application.

For optimal and reproducible results, BD Horizon Brilliant Stain Buffer should be used anytime two or more BD Horizon Brilliant dyes are used in the same experiment. Fluorescent dye interactions may cause staining artifacts which may affect data interpretation. The BD Horizon Brilliant Stain Buffer was designed to minimize these interactions. More information can be found in the Technical Data Sheet of the BD Horizon Brilliant Stain Buffer (Cat. No. 563794/566349) or the BD Horizon Brilliant Stain Buffer Plus (Cat. No. 566385).

Note: When using high concentrations of antibody, background binding of this dye to erythroid cell subsets (mature erythrocytes and precursors) has been observed. For researchers studying these cell populations, or in cases where light scatter gating does not adequately exclude these cells from the analysis, this background may be an important factor to consider when selecting reagents for panel(s).

### Suggested Companion Products

Catalog Number	Name	Size	Clone
554656	Stain Buffer (FBS)	500 mL	(none)
554657	Stain Buffer (BSA)	500 mL	(none)
564299	BUV737 Mouse IgG1, $\kappa$ Isotype Control	50 $\mu$ g	X40
555899	Lysing Buffer	100 mL	(none)
563794	Brilliant Stain Buffer	100 Tests	(none)
349202	BD FACST™ Lysing Solution	100 mL	(none)
566349	Brilliant Stain Buffer	1000 Tests	(none)
566385	Brilliant Stain Buffer Plus	1000 Tests	(none)

### Product Notices

1. This reagent has been pre-diluted for use at the recommended Volume per Test. We typically use  $1 \times 10^6$  cells in a 100- $\mu$ l experimental sample (a test).
2. An isotype control should be used at the same concentration as the antibody of interest.
3. Caution: Sodium azide yields highly toxic hydrazoic acid under acidic conditions. Dilute azide compounds in running water before discarding to avoid accumulation of potentially explosive deposits in plumbing.
4. For fluorochrome spectra and suitable instrument settings, please refer to our Multicolor Flow Cytometry web page at [www.bdbiosciences.com/colors](http://www.bdbiosciences.com/colors).
5. BD Horizon Brilliant Stain Buffer is covered by one or more of the following US patents: 8,110,673; 8,158,444; 8,575,303; 8,354,239.
6. BD Horizon Brilliant Ultraviolet 737 is covered by one or more of the following US patents: 8,110,673; 8,158,444; 8,227,187; 8,575,303; 8,354,239.
7. Species testing during development may have been performed with a different format of the same clone. Selected applications have been tested for cross-reactivity.
8. Please refer to <http://regdocs.bd.com> to access safety data sheets (SDS).
9. Please refer to [www.bdbiosciences.com/us/s/resources](http://www.bdbiosciences.com/us/s/resources) for technical protocols.

### References

- Baba M, Imai T, Nishimura M, et al. Identification of CCR6, the specific receptor for a novel lymphocyte-directed CC chemokine LARC. *J Biol Chem.* 1997; 272(23):14893-14898. (Biology)
- Brandes M, Willimann K, Lang AB, et al. Flexible migration program regulates gamma delta T-cell involvement in humoral immunity. *Blood.* 2003; 102(10):3693-3701. (Clone-specific)
- Greaves DR, Wang W, Dairaghi DJ, et al. CCR6, a CC chemokine receptor that interacts with macrophage inflammatory protein 3alpha and is highly expressed in human dendritic cells. *J Exp Med.* 1997; 186(6):837-844. (Biology)
- Homey B, Dieu-Nosjean MC, Wiesenborn A, et al. Up-regulation of macrophage inflammatory protein-3 alpha/CCL20 and CC chemokine receptor 6 in psoriasis. *J Immunol.* 2000; 164(12):6621-6632. (Biology)
- Kim CH, Rott L, Kunkel EJ, et al. Rules of chemokine receptor association with T cell polarization in vivo. *J Clin Invest.* 2001; 108(9):1331-1339. (Biology)
- Liao F, Alderson R, Su J, Ullrich SJ, Kreider BL, Farber JM. STRL22 is a receptor for the CC chemokine MIP-3alpha. *Biochem Biophys Res Commun.* 1997; 236(1):212-217. (Biology)
- Liao F, Lee HH, Farber JM. Cloning of STRL22, a new human gene encoding a G-protein-coupled receptor related to chemokine receptors and located on chromosome 6q27. *Genomics.* 1997; 40(1):175-180. (Biology)
- Liao F, Rabin RL, Smith CS, Sharma G, Nutman TB, Farber JM. CC-chemokine receptor 6 is expressed on diverse memory subsets of T cells and determines responsiveness to macrophage inflammatory protein 3 alpha. *J Immunol.* 1999; 162(1):186-194. (Biology)
- Liao F, Shirakawa AK, Foley JF, Rabin RL, Farber JM. Human B cells become highly responsive to macrophage-inflammatory protein-3 alpha/CC chemokine ligand-20 after cellular activation without changes in CCR6 expression or ligand binding. *J Immunol.* 2002; 168(10):4871-4880. (Clone-specific: Flow cytometry)
- Lim HW, Lee J, Hillsamer P, Kim CH. Human Th17 cells share major trafficking receptors with both polarized effector T cells and FOXP3+ regulatory T cells. *J Immunol.* 2008; 180(1):122-129. (Biology)
- Power CA, Church DJ, Meyer A, et al. Cloning and characterization of a specific receptor for the novel CC chemokine MIP-3alpha from lung dendritic cells. *J Exp Med.* 1997; 186(6):825-835. (Biology)
- Sallusto F, Lenig D, Forster R, Lipp M, Lanzavecchia A. Two subsets of memory T lymphocytes with distinct homing potentials and effector functions. *Nature.* 1999; 401(6754):708-712. (Clone-specific: Flow cytometry)
- Thomas SY, Banerji A, Medoff BD, Lilly CM, Luster AD. Multiple chemokine receptors, including CCR6 and CXCR3, regulate antigen-induced T cell homing to the human asthmatic airway. *J Immunol.* 2007; 179(3):1901-1912. (Clone-specific: Flow cytometry)
- Yang D, Chertov O, Bykovskaia SN, et al. Beta-defensins: linking innate and adaptive immunity through dendritic and T cell CCR6. *Science.* 1999; 286(5439):525-528. (Biology)
- Zaballos A, Varona R, Gutierrez J, Lind P, Marquez G. Molecular cloning and RNA expression of two new human chemokine receptor-like genes. *Biochem Biophys Res Commun.* 1996; 227(3):846-853. (Biology)