

## Technical Data Sheet

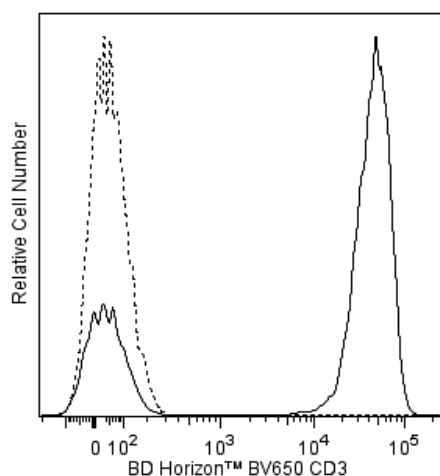
**BV650 Mouse Anti-Human CD3****Product Information**

<b>Material Number:</b>	<b>563999</b>
<b>Alternate Name:</b>	CD3-epsilon; CD3E; Leu4; T-cell surface antigen T3/Leu-4 epsilon chain; T3E
<b>Size:</b>	100 tests
<b>Vol. per Test:</b>	5 µl
<b>Clone:</b>	SK7 (also known as Leu-4)
<b>Immunogen:</b>	Human Thymocytes
<b>Isotype:</b>	Mouse (BALB/c) IgG1, κ
<b>Reactivity:</b>	QC Testing: Human
<b>Workshop:</b>	II T118; III T492
<b>Storage Buffer:</b>	Aqueous buffered solution containing BSA and ≤0.09% sodium azide.

**Description**

The SK7 (Leu-4) monoclonal antibody specifically binds to the epsilon chain of the CD3 antigen/T-cell antigen receptor (TCR) complex. This complex is composed of at least six proteins that range in molecular weight from 20 to 30 kDa. The antigen recognized by CD3 antibodies is noncovalently associated with either  $\alpha/\beta$  or  $\gamma/\delta$  TCR (70 to 90 kDa). The CD3 antigen is present on 61% to 85% of normal peripheral blood lymphocytes 60% to 85% of thymocytes and on Purkinje cells in cerebellum. The soluble form of this antibody has a mitogenic effect on most peripheral blood T lymphocytes, provided appropriate functional monocytes are present.

The antibody was conjugated to BD Horizon™ BV650 which is part of the BD Horizon™ Brilliant Violet™ family of dyes. This dye is a tandem fluorochrome of BD Horizon™ BV421 with an Ex Max of 405-nm and an acceptor dye with an Em Max at 650-nm. BD Horizon™ BV650 can be excited by the violet laser and detected in a filter used to detect APC-like dyes (eg, 660/20-nm filter). Due to the excitation and emission characteristics of the acceptor dye, there will be spillover into the APC and Alexa Fluor® 700 detectors. However, the spillover can be corrected through compensation as with any other dye combination.



**Flow cytometric analysis of CD3 expression on human peripheral blood lymphocytes.** Whole blood was stained with BD Horizon™ BV650 Mouse Anti-Human CD3 antibody (Cat. No. 563999/564003; solid line histogram) or BD Horizon™ BV650 Mouse IgG1, κ Isotype Control (Cat. No. 563231; dashed line histogram). Erythrocytes were lysed with BD FACS™ Lysing Solution (Cat. No. 349202). The fluorescence histograms were derived from gated events with the forward and side light-scatter characteristics of intact lymphocytes. Flow cytometric analysis was performed using a BD™ LSR II Flow Cytometer System.

**Preparation and Storage**

Store undiluted at 4°C and protected from prolonged exposure to light. Do not freeze.

The monoclonal antibody was purified from tissue culture supernatant or ascites by affinity chromatography.

The antibody was conjugated with BD Horizon™ BV650 under optimum conditions, and unconjugated antibody and free BD Horizon™ BV650 were removed.

**Application Notes****Application**

Flow cytometry

Routinely Tested

**BD Biosciences**

bdbiosciences.com

United States	Canada	Europe	Japan	Asia Pacific	Latin America/Caribbean
877.232.8995	800.979.9408	32.53.720.550	0120.8555.90	65.6861.0633	55.11.5185.9995

For country contact information, visit [bdbiosciences.com/contact](http://bdbiosciences.com/contact)

Conditions: The information disclosed herein is not to be construed as a recommendation to use the above product in violation of any patents. BD Biosciences will not be held responsible for patent infringement or other violations that may occur with the use of our products. Purchase does not include or carry any right to resell or transfer this product either as a stand-alone product or as a component of another product. Any use of this product other than the permitted use without the express written authorization of Becton, Dickinson and Company is strictly prohibited.

For Research Use Only. Not for use in diagnostic or therapeutic procedures. Not for resale.

Unless otherwise noted, BD, BD Logo and all other trademarks are property of Becton, Dickinson and Company. © 2011 BD



## Suggested Companion Products

Catalog Number	Name	Size	Clone
554656	Stain Buffer (FBS)	500 ml	(none)
554657	Stain Buffer (BSA)	500 ml	(none)
564003	BV650 Mouse Anti-Human CD3	25 tests	SK7
563231	BV650 Mouse IgG1, k Isotype Control	50 µg	X40
349202	BD FACSTM Lysing Solution	100 ml	(none)
555899	Lysing Buffer	100 ml	(none)

## Product Notices

1. This reagent has been pre-diluted for use at the recommended Volume per Test. We typically use  $1 \times 10^6$  cells in a 100-µl experimental sample (a test).
2. An isotype control should be used at the same concentration as the antibody of interest.
3. Caution: Sodium azide yields highly toxic hydrazoic acid under acidic conditions. Dilute azide compounds in running water before discarding to avoid accumulation of potentially explosive deposits in plumbing.
4. Source of all serum proteins is from USDA inspected abattoirs located in the United States.
5. Alexa Fluor® is a registered trademark of Molecular Probes, Inc., Eugene, OR.
6. Brilliant Violet™ 650 is a trademark of Sirigen.
7. For fluorescence spectra and suitable instrument settings, please refer to our Multicolor Flow Cytometry web page at [www.bdbiosciences.com/colors](http://www.bdbiosciences.com/colors).
8. Please refer to [www.bdbiosciences.com/pharming/protocols](http://www.bdbiosciences.com/pharming/protocols) for technical protocols.

## References

Ernst DN, Shih CC. CD3 complex. *J Biol Regul Homeost Agents*. 2000; 14(3):226-229. (Biology)

Kan EA, Wang CY, Wang LC, Evans RL. Noncovalently bonded subunits of 22 and 28 kd are rapidly internalized by T cells reacted with anti-Leu-4 antibody. *J Immunol*. 1983; 131(2):536-539. (Clone-specific: Flow cytometry, Functional assay, Immunofluorescence, Immunoprecipitation)

Kaneoka H, Perez-Rojas G, Sasasaki T, Benike CJ, Engleman EG. Human T lymphocyte proliferation induced by a pan-T monoclonal antibody (anti-Leu 4): heterogeneity of response is a function of monocytes. *J Immunol*. 1983; 131(1):158-164. (Clone-specific: Activation, Functional assay, Stimulation)

Knapp W, Dörken B, Gilks WR, et al, ed. *Leukocyte Typing IV*. New York, NY: Oxford University Press; 1989:1-1182. (Biology)

Knowles RW. Immunochemical analysis of the T-cell-specific antigens. In: Reinherz EL, Haynes BF, Nadler LM, Bernstein ID, ed. *Leukocyte Typing II: Human T Lymphocytes*. New York, NY: Springer-Verlag; 1986:259-288. (Clone-specific: Immunoprecipitation)

Kurrie R, Seyfert W, Trautwein A, Seiler FR. T cell activation by CD3 antibodies. In: Reinherz EL, Haynes BF, Nadler LM, Bernstein ID, ed. *Leukocyte Typing II: Human T Lymphocytes*. New York, NY: Springer-Verlag; 1986:137-146. (Clone-specific: Activation, Flow cytometry, Functional assay, Stimulation)

Lanier LL, Allison JP, Phillips JH. Correlation of cell surface antigen expression on human thymocytes by multi-color flow cytometric analysis: implications for differentiation. *J Immunol*. 1986; 137(8):2501-2507. (Clone-specific: Immunoprecipitation)

Ledbetter JA, Evans RL, Lipinski M, Cunningham-Rundles C, Good RA, Herzenberg LA. Evolutionary conservation of surface molecules that distinguish T lymphocyte helper/inducer and cytotoxic/suppressor subpopulations in mouse and man. *J Exp Med*. 1981; 153(2):310-323. (Clone-specific: Immunoprecipitation)

Ledbetter JA, Frankel AE, Herzenberg. Human Leu T-cell differentiation antigens: quantitative expression on normal lymphoid cells and cell lines. In: Hammerling G, Hammerling U, Kearney J, ed. *Monoclonal Antibodies and T Cell Hybridomas: Perspectives and Technical News*. New York: Elsevier/North Holland Biomedical Press; 1981:16-22. (Clone-specific: Flow cytometry, Immunoprecipitation)

McMichael AJ, Beverly PCL, Gilks W, et al, ed. *Leukocyte Typing III: White Cell Differentiation Antigens*. New York: Oxford University Press; 1987. (Clone-specific: Flow cytometry)

Schlossman SF, Boumsell L, Gilks W, et al, ed. *Leukocyte Typing V: White Cell Differentiation Antigens*. New York: Oxford University Press; 1995. (Biology)

van Dongen JJM, Krissansen GW, Wolvers-Tettero ILM, et al. Cytoplasmic expression of the CD3 antigen as a diagnostic marker for immature T-cell malignancies. *Blood*. 1988; 71(3):603-612. (Clone-specific: Immunofluorescence, Western blot)

Zola H, Swart B, Nicholson I, Voss E. *Leukocyte and Stromal Cell Molecules. The CD Markers*. Hoboken, New Jersey: John Wiley & Sons, Inc.; 2007:1-581. (Biology)

## BD Biosciences

[bdbiosciences.com](http://bdbiosciences.com)

United States 877.232.8995    Canada 800.979.9408    Europe 32.53.720.550    Japan 0120.8555.90    Asia Pacific 65.6861.0633    Latin America/Caribbean 55.11.5185.9995

For country contact information, visit [bdbiosciences.com/contact](http://bdbiosciences.com/contact)

Conditions: The information disclosed herein is not to be construed as a recommendation to use the above product in violation of any patents. BD Biosciences will not be held responsible for patent infringement or other violations that may occur with the use of our products. Purchase does not include or carry any right to resell or transfer this product either as a stand-alone product or as a component of another product. Any use of this product other than the permitted use without the express written authorization of Becton, Dickinson and Company is strictly prohibited.

For Research Use Only. Not for use in diagnostic or therapeutic procedures. Not for resale.

Unless otherwise noted, BD, BD Logo and all other trademarks are property of Becton, Dickinson and Company. © 2011 BD

