

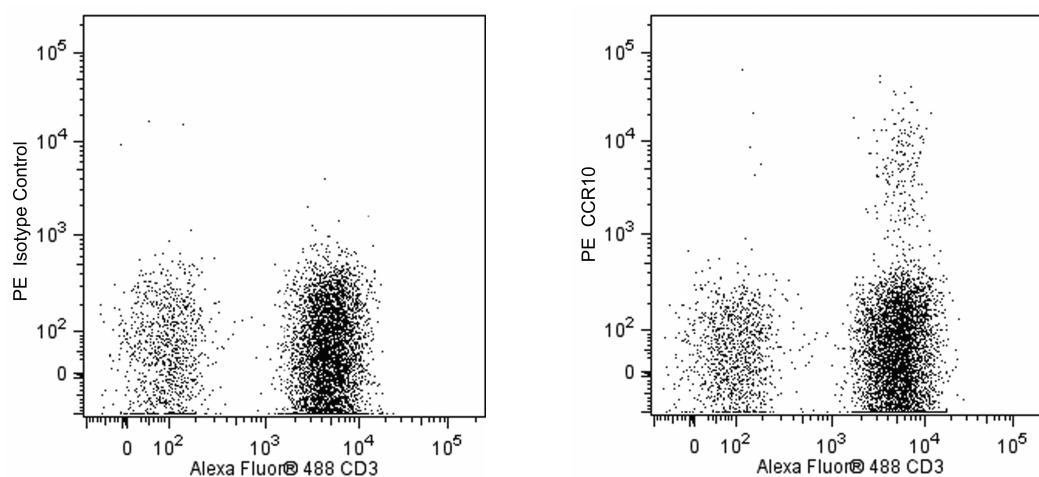
Technical Data Sheet

PE Mouse Anti-Human CCR10**Product Information**

Material Number:	563656
Alternate Name:	C-C CKR-10, C-C CKR-10, G-protein coupled receptor 2, CCR-10, GPR2
Size:	25 µg
Concentration:	0.2 mg/ml
Clone:	1B5
Immunogen:	Human CCR10 Transfected Cell Line
Isotype:	Mouse (C57BL/6) IgG2a, κ
Reactivity:	QC Testing: Human
Storage Buffer:	Aqueous buffered solution containing protein stabilizer and ≤0.09% sodium azide.

Description

The 1B5 monoclonal antibody specifically binds to CCR10 (CC-chemokine receptor 10). CCR10 is a seven transmembrane domain G-protein-coupled receptor that is also known as GPR-2 (G-protein coupled receptor 2). CCR10 is expressed by cells that mediate epithelial immunity including a small subset of T memory cells, IgA-secreting B cells, dermal endothelial cells and fibroblasts. It is also expressed on EBV-immortalized B cells. Chemokines CCL27 and CCL28 are the ligands for CCR10. CCR10 reportedly not only functions in regulating the homing and function of cells that mediate epithelial immunity. It may also regulate the epithelial localization, survival, and proliferation of tumor cells and facilitate their evasion from immune surveillance.



Flow cytometric analysis of human CCR10 expression on peripheral blood lymphocytes. Whole blood was treated with BD Pharm Lyse™ Lysing Buffer (Cat. No. 555899) to lyse erythrocytes. The leucocytes were then stained with Alexa Fluor® 488 Mouse Anti-Human CD3 antibody (Cat No. 557694) and either PE Mouse IgG2a, κ Isotype Control (Cat. No. 554648; Left Panel) or PE Mouse Anti-Human CCR10 (Cat. No. 563656; Right Panel). The two-color flow cytometric dot plot shows the correlated expression patterns of CD3 versus CCR10 (or Ig Isotype control staining) for gated events with the forward and side light-scatter characteristics of viable peripheral blood lymphocytes. Flow cytometric analysis was performed using a BD™ LSR II Flow Cytometer System.

Preparation and Storage

Store undiluted at 4°C and protected from prolonged exposure to light. Do not freeze.

The monoclonal antibody was purified from tissue culture supernatant or ascites by affinity chromatography.

The antibody was conjugated with R-PE under optimum conditions, and unconjugated antibody and free PE were removed.

Application Notes**Application**

Flow cytometry

Routinely Tested

BD Biosciences

bdbiosciences.com

United States 877.232.8995 Canada 866.979.9408 Europe 32.2.400.98.95 Japan 0120.8555.90 Asia Pacific 65.6861.0633 Latin America/Caribbean 55.11.5185.9995

For country contact information, visit bdbiosciences.com/contact

Conditions: The information disclosed herein is not to be construed as a recommendation to use the above product in violation of any patents. BD Biosciences will not be held responsible for patent infringement or other violations that may occur with the use of our products. Purchase does not include or carry any right to resell or transfer this product either as a stand-alone product or as a component of another product. Any use of this product other than the permitted use without the express written authorization of Becton, Dickinson and Company is strictly prohibited.

For Research Use Only. Not for use in diagnostic or therapeutic procedures. Not for resale.

© 2016 BD. BD, the BD Logo and all other trademarks are property of Becton, Dickinson and Company.

563656 Rev. 2



Suggested Companion Products

<u>Catalog Number</u>	<u>Name</u>	<u>Size</u>	<u>Clone</u>
554656	Stain Buffer (FBS)	500 mL	(none)
555899	Lysing Buffer	100 mL	(none)
554648	PE Mouse IgG2a, κ Isotype Control	0.1 mg	G155-178
557694	Alexa Fluor® 488 Mouse Anti-Human CD3	100 Tests	UCHT1
554657	Stain Buffer (BSA)	500 mL	(none)
349202	BD FACS™ Lysing Solution	100 mL	(none)

Product Notices

1. Since applications vary, each investigator should titrate the reagent to obtain optimal results.
2. An isotype control should be used at the same concentration as the antibody of interest.
3. Caution: Sodium azide yields highly toxic hydrazoic acid under acidic conditions. Dilute azide compounds in running water before discarding to avoid accumulation of potentially explosive deposits in plumbing.
4. Alexa Fluor® is a registered trademark of Molecular Probes, Inc., Eugene, OR.
5. For fluorochrome spectra and suitable instrument settings, please refer to our Multicolor Flow Cytometry web page at www.bdbiosciences.com/colors.
6. Please refer to www.bdbiosciences.com/pharming/protocols for technical protocols.

References

- Homey B, Wang W, Soto H, et al. Cutting edge: the orphan chemokine receptor G protein-coupled receptor-2 (GPR-2, CCR10) binds the skin-associated chemokine CCL27 (CTACK/ALP/ILC). *J Immunol.* 2000; 164(7):3465-3470. (Biology)
- Jaimes MC, Rojas OL, Kunkel EJ, et al. Maturation and trafficking markers on rotavirus-specific B cells during acute infection and convalescence in children. *J Virol.* 2004; 78(20):10967-10976. (Clone-specific)
- Marchese A, Docherty JM, Nguyen T, et al. Cloning of human genes encoding novel G protein-coupled receptors. *Genomics.* 1994; 23(3):609-618. (Biology)
- Pan J, Kunkel EJ, Gossler U, et al. A novel chemokine ligand for CCR10 and CCR3 expressed by epithelial cells in mucosal tissues. *J Immunol.* 2000; 165(6):2943-2949. (Biology)
- Soler D, Humphreys TL, Spinola SM, Campbell JJ. CCR4 versus CCR10 in human cutaneous TH lymphocyte trafficking. *Blood.* 2003; 101(5):1677-1682. (Immunogen: Flow cytometry)
- Xiong N, Fu Y, Hu S, Xia M, Yang J. CCR10 and its ligands in regulation of epithelial immunity and diseases. *Protein Sci.* 2012; 3(8):571-580. (Biology)