

Technical Data Sheet

BV605 Mouse Anti-Human CD3**Product Information**

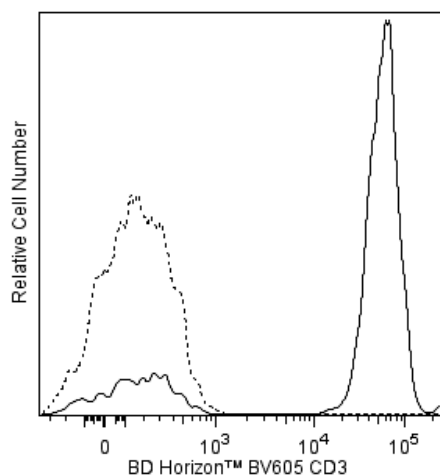
Material Number:	563219
Alternate Name:	CD3-epsilon; CD3E; Leu4; T-cell surface antigen T3/Leu-4 epsilon chain; T3E
Size:	100 Tests
Vol. per Test:	5 µl
Clone:	SK7 (also known as Leu-4)
Immunogen:	Human Thymocytes
Isotype:	Mouse (BALB/c) IgG1, κ
Reactivity:	QC Testing: Human
Workshop:	II T118; III T492
Storage Buffer:	Aqueous buffered solution containing BSA and ≤0.09% sodium azide.

Description

The SK7 (Leu-4) monoclonal antibody specifically binds to the epsilon chain of the CD3 antigen/T-cell antigen receptor (TCR) complex. This complex is composed of at least six proteins that range in molecular weight from 20 to 30 kDa. The antigen recognized by CD3 antibodies is noncovalently associated with either α/β or γ/δ TCR (70 to 90 kDa). The CD3 antigen is present on 61% to 85% of normal peripheral blood lymphocytes 60% to 85% of thymocytes and on Purkinje cells in cerebellum. The soluble form of this antibody has a mitogenic effect on most peripheral blood T lymphocytes, provided appropriate functional monocytes are present.

This antibody is conjugated to BD Horizon BV605 which is part of the BD Horizon Brilliant™ Violet family of dyes. With an Ex Max of 407-nm and Em Max of 602-nm, BD Horizon BV605 can be excited by a violet laser and detected with a standard 610/20-nm filter set. BD Horizon BV605 is a tandem fluorochrome of BD Horizon BV421 and an acceptor dye with an Em max at 605-nm. Due to the excitation of the acceptor dye by the green (532 nm) and yellow-green (561 nm) lasers, there will be significant spillover into the PE and BD Horizon PE-CF594 detectors off the green or yellow-green lasers. BD Horizon BV605 conjugates are very bright, often exhibiting brightness equivalent to PE conjugates and can be used as a third color off of the violet laser.

For optimal and reproducible results, BD Horizon Brilliant Stain Buffer should be used anytime two or more BD Horizon Brilliant dyes are used in the same experiment. Fluorescent dye interactions may cause staining artifacts which may affect data interpretation. The BD Horizon Brilliant Stain Buffer was designed to minimize these interactions. More information can be found in the Technical Data Sheet of the BD Horizon Brilliant Stain Buffer (Cat. No. 563794).



Flow cytometric analysis of CD3 expression on human peripheral blood lymphocytes. Whole blood was stained with BD Horizon™ BV605 Mouse Anti-Human CD3 antibody (Cat. No. 563217/563219; solid line histogram) or BD Horizon™ BV605 Mouse IgG1, κ Isotype Control (Cat. No. 562652; dashed line histogram). Erythrocytes were lysed with BD PharmLyse™ Lysing Buffer (Cat. No. 555899). The fluorescence histograms were derived from gated events with the forward and side light-scatter characteristics of viable lymphocytes. Flow cytometric analysis was performed using a BD™ LSR II Flow Cytometer System.

Preparation and Storage

Store undiluted at 4°C and protected from prolonged exposure to light. Do not freeze.

The monoclonal antibody was purified from tissue culture supernatant or ascites by affinity chromatography.

The antibody was conjugated with BD Horizon™ BV605 under optimum conditions, and unconjugated antibody and free BD Horizon™ BV605 were removed.

BD Biosciences

bdbiosciences.com

United States	Canada	Europe	Japan	Asia Pacific	Latin America/Caribbean
877.232.8995	800.268.5430	32.2.400.98.95	0120.8555.90	65.6861.0633	55.11.5185.9995

For country contact information, visit bdbiosciences.com/contact

Conditions: The information disclosed herein is not to be construed as a recommendation to use the above product in violation of any patents. BD Biosciences will not be held responsible for patent infringement or other violations that may occur with the use of our products. Purchase does not include or carry any right to resell or transfer this product either as a stand-alone product or as a component of another product. Any use of this product other than the permitted use without the express written authorization of Becton, Dickinson and Company is strictly prohibited.

For Research Use Only. Not for use in diagnostic or therapeutic procedures. Not for resale.

Unless otherwise noted, BD, BD Logo and all other trademarks are property of Becton, Dickinson and Company. © 2014 BD



Application Notes

Application

Flow cytometry

Routinely Tested

Suggested Companion Products

Catalog Number	Name	Size	Clone
554656	Stain Buffer (FBS)	500 mL	(none)
563217	BV605 Mouse Anti-Human CD3	25 Tests	SK7
562652	BV605 Mouse IgG1, κ Isotype Control	50 μ g	X40
555899	Lysing Buffer	100 mL	(none)
349202	BD FACSTM Lysing Solution	100 mL	(none)
563794	Brilliant Stain Buffer	5 mL	(none)

Product Notices

1. This reagent has been pre-diluted for use at the recommended Volume per Test. We typically use 1×10^6 cells in a 100- μ l experimental sample (a test).
2. Source of all serum proteins is from USDA inspected abattoirs located in the United States.
3. An isotype control should be used at the same concentration as the antibody of interest.
4. Please refer to www.bdbiosciences.com/pharmingen/protocols for technical protocols.
5. Please observe the following precautions: Absorption of visible light can significantly alter the energy transfer occurring in any tandem fluorochrome conjugate; therefore, we recommend that special precautions be taken (such as wrapping vials, tubes, or racks in aluminum foil) to prevent exposure of conjugated reagents, including cells stained with those reagents, to room illumination.
6. Caution: Sodium azide yields highly toxic hydrazoic acid under acidic conditions. Dilute azide compounds in running water before discarding to avoid accumulation of potentially explosive deposits in plumbing.
7. For fluorochrome spectra and suitable instrument settings, please refer to our Multicolor Flow Cytometry web page at www.bdbiosciences.com/colors.
8. Although every effort is made to minimize the lot-to-lot variation in the efficiency of the fluorochrome energy transfer, differences in the residual emission from BD Horizon™ BV421 may be observed. Therefore, we recommend that individual compensation controls be performed for every BD Horizon™ BV605 conjugate.
9. CF™ is a trademark of Biotium, Inc.

References

Ernst DN, Shih CC. CD3 complex. *J Biol Regul Homeost Agents*. 2000; 14(3):226-229. (Biology)

Kan EA, Wang CY, Wang LC, Evans RL. Noncovalently bonded subunits of 22 and 28 kd are rapidly internalized by T cells reacted with anti-Leu-4 antibody. *J Immunol*. 1983; 131(2):536-539. (Clone-specific: Flow cytometry, Functional assay, Immunofluorescence, Immunoprecipitation)

Kaneoka H, Perez-Rojas G, Sasasaki T, Benike CJ, Engleman EG. Human T lymphocyte proliferation induced by a pan-T monoclonal antibody (anti-Leu 4): heterogeneity of response is a function of monocytes. *J Immunol*. 1983; 131(1):158-164. (Clone-specific: Activation, Functional assay, Stimulation)

Knapp W, Dörken B, Gilks WR, et al, ed. *Leukocyte Typing IV*. New York, NY: Oxford University Press; 1989:1-1182. (Biology)

Knowles RW. Immunochemical analysis of the T-cell-specific antigens. In: Reinherz EL, Haynes BF, Nadler LM, Bernstein ID, ed. *Leukocyte Typing II: Human T Lymphocytes*. New York, NY: Springer-Verlag; 1986:259-288. (Clone-specific: Immunoprecipitation)

Kurrie R, Seyfert W, Trautwein A, Seiler FR. T cell activation by CD3 antibodies. In: Reinherz EL, Haynes BF, Nadler LM, Bernstein ID, ed. *Leukocyte Typing II: Human T Lymphocytes*. New York, NY: Springer-Verlag; 1986:137-146. (Clone-specific: Activation, Flow cytometry, Functional assay, Stimulation)

Lanier LL, Allison JP, Phillips JH. Correlation of cell surface antigen expression on human thymocytes by multi-color flow cytometric analysis: implications for differentiation. *J Immunol*. 1986; 137(8):2501-2507. (Clone-specific: Immunoprecipitation)

Ledbetter JA, Evans RL, Lipinski M, Cunningham-Rundles C, Good RA, Herzenberg LA. Evolutionary conservation of surface molecules that distinguish T lymphocyte helper/inducer and cytotoxic/suppressor subpopulations in mouse and man. *J Exp Med*. 1981; 153(2):310-323. (Clone-specific: Immunoprecipitation)

McMichael AJ, Beverly PCL, Gilks W, et al, ed. *Leukocyte Typing III: White Cell Differentiation Antigens*. New York: Oxford University Press; 1987. (Biology)

Schlossman SF, Boumsell L, Gilks W, et al, ed. *Leukocyte Typing V: White Cell Differentiation Antigens*. Oxford: Oxford University Press; 1995. (Biology)

van Dongen JJM, Krissansen GW, Wolvers-Tettero ILM, et al. Cytoplasmic expression of the CD3 antigen as a diagnostic marker for immature T-cell malignancies. *Blood*. 1988; 71(3):603-612. (Clone-specific: Immunofluorescence, Western blot)

Zola H, Swart B, Nicholson I, Voss E. *Leukocyte and Stromal Cell Molecules. The CD Markers*. Hoboken, New Jersey: John Wiley & Sons, Inc.; 2007:1-581. (Biology)

BD Biosciences

bdbiosciences.com

United States	Canada	Europe	Japan	Asia Pacific	Latin America/Caribbean
877.232.8995	800.268.5430	32.2.400.98.95	0120.8555.90	65.6861.0633	55.11.5185.9995

For country contact information, visit bdbiosciences.com/contact

Conditions: The information disclosed herein is not to be construed as a recommendation to use the above product in violation of any patents. BD Biosciences will not be held responsible for patent infringement or other violations that may occur with the use of our products. Purchase does not include or carry any right to resell or transfer this product either as a stand-alone product or as a component of another product. Any use of this product other than the permitted use without the express written authorization of Becton, Dickinson and Company is strictly prohibited.

For Research Use Only. Not for use in diagnostic or therapeutic procedures. Not for resale.

Unless otherwise noted, BD, BD Logo and all other trademarks are property of Becton, Dickinson and Company. © 2014 BD

