

Technical Data Sheet

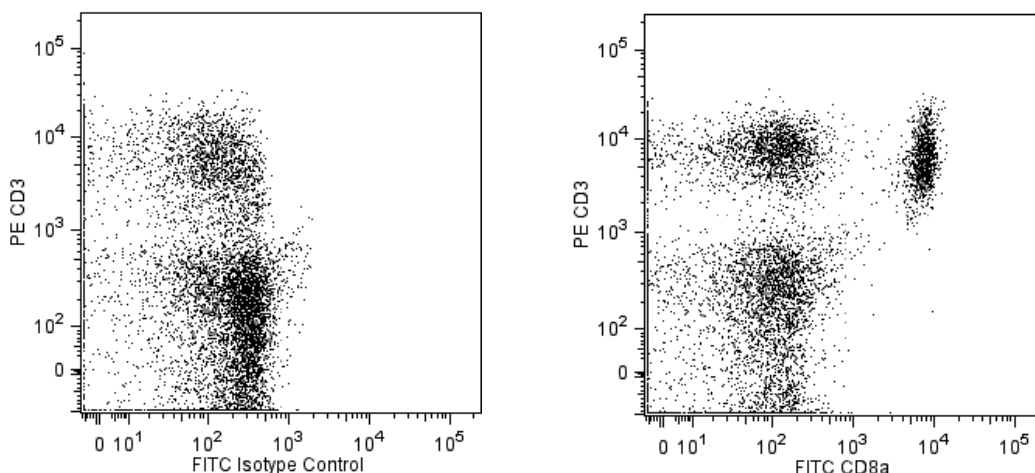
FITC Rat Anti-Mouse CD8a

Product Information

Material Number:	561966
Alternate Name:	CD8a; CD8 alpha chain; Ly-2; Lyt2; Lyt-2; Ly-35; Ly-B
Size:	25 µg
Concentration:	0.5 mg/ml
Clone:	53-6.7
Immunogen:	Mouse Spleen Cells or Thymocyte Membranes
Isotype:	Rat (LOU) IgG2a, κ
Reactivity:	QC Testing: Mouse
Storage Buffer:	Aqueous buffered solution containing ≤0.09% sodium azide.

Description

The 53-6.7 monoclonal antibody specifically binds to the 38 kDa α and 34 kDa α' chains of the CD8 differentiation antigen (Ly-2 or Lyt-2) of all mouse strains tested. The CD8 α and α' chains (CD8a) form heterodimers with the CD8 β chain (CD8b, Ly-3, or Lyt-3) on the surface of most thymocytes. A subpopulation of mature T lymphocytes (i.e., MHC class I-restricted T cells, including most T suppressor/cytotoxic cells) expresses almost exclusively the CD8 $\alpha\beta$ heterodimer. Subsets of $\gamma\delta$ TCR-bearing T cells, intestinal intraepithelial lymphocytes, and dendritic cells express CD8a without CD8b. It has been suggested that the expression of the CD8a/CD8b heterodimer is restricted to T lymphocytes which matured in the thymus or in an extrathymic environment that had been influenced by thymus-initiated neuroendocrine signals. CD8 is an antigen coreceptor on the T-cell surface which interacts with MHC class I molecules on antigen-presenting cells or epithelial cells. It participates in T-cell activation through its association with the T-cell receptor complex and protein tyrosine kinase lck (p56 [lck]). The CD8 α and α' chains arise from alternatively spliced messengers of a single *CD8a* gene. The longer α form associates with p56 [lck] via a CXCP motif in its cytoplasmic domain, which it shares with CD4, but not with CD8b. The truncated α' chain is unable to associate with p56 [lck], and it may function to attenuate the CD8-mediated costimulatory signal during intrathymic T-cell maturation. In vivo and in vitro treatment with 53-6.7 mAb has reportedly been effective at depleting CD8⁺ peripheral T lymphocytes. The 53-6.7 antibody has also been reported to cross-react with CD8 α - and α' -like polypeptides on subsets of thymic and peripheral lymphocytes in the Egyptian toad, *Bufo regularis*.



Two-color flow cytometric analysis of CD8a expression on mouse splenocytes. Mouse splenic leucocytes were stained with PE Hamster Anti-Mouse CD3e (Cat. No. 553064/561824/553063) and either FITC Rat IgG2a, κ Isotype Control (Cat. No. 553929; left plot) or FITC Rat Anti-Mouse CD8a (Cat. No. 553030/561966/553031; right plot). The two-color dot plot showing the correlated expression of CD8a versus CD3e was derived from gated events with the forward and side light-scatter characteristic of viable splenic leucocytes.

BD Biosciences

bdbiosciences.com

United States 877.232.8995 Canada 866.979.9408 Europe 32.2.400.98.95 Japan 0120.8555.90 Asia Pacific 65.6861.0633 Latin America/Caribbean 55.11.5185.9995

For country contact information, visit bdbiosciences.com/contact

Conditions: The information disclosed herein is not to be construed as a recommendation to use the above product in violation of any patents. BD Biosciences will not be held responsible for patent infringement or other violations that may occur with the use of our products. Purchase does not include or carry any right to resell or transfer this product either as a stand-alone product or as a component of another product. Any use of this product other than the permitted use without the express written authorization of Becton, Dickinson and Company is strictly prohibited.

For Research Use Only. Not for use in diagnostic or therapeutic procedures. Not for resale.

© 2016 BD. BD, the BD Logo and all other trademarks are property of Becton, Dickinson and Company.



Preparation and Storage

Store undiluted at 4°C and protected from prolonged exposure to light. Do not freeze.

The monoclonal antibody was purified from tissue culture supernatant or ascites by affinity chromatography.

The antibody was conjugated with FITC under optimum conditions, and unreacted FITC was removed.

Application Notes

Application

Flow cytometry

Routinely Tested

Suggested Companion Products

Catalog Number	Name	Size	Clone
553929	FITC Rat IgG2a, κ Isotype Control	0.25 mg	R35-95
554656	Stain Buffer (FBS)	500 mL	(none)
553064	PE Hamster Anti-Mouse CD3e	0.2 mg	145-2C11
561824	PE Hamster Anti-Mouse CD3e	25 μ g	145-2C11
553063	PE Hamster Anti-Mouse CD3e	0.1 mg	145-2C11
553031	FITC Rat Anti-Mouse CD8a	0.5 mg	53-6.7
553030	FITC Rat Anti-Mouse CD8a	0.1 mg	53-6.7
554657	Stain Buffer (BSA)	500 mL	(none)

Product Notices

1. Since applications vary, each investigator should titrate the reagent to obtain optimal results.
2. An isotype control should be used at the same concentration as the antibody of interest.
3. Caution: Sodium azide yields highly toxic hydrazoic acid under acidic conditions. Dilute azide compounds in running water before discarding to avoid accumulation of potentially explosive deposits in plumbing.
4. For fluorochrome spectra and suitable instrument settings, please refer to our Multicolor Flow Cytometry web page at www.bdbiosciences.com/colors.
5. Please refer to www.bdbiosciences.com/pharming/protocols for technical protocols.

References

- Bierer BE, Sleckman BP, Ratnoff SJ, Burakoff SJ. The biologic roles of CD2, CD4, and CD8 in T-cell activation. *Annu Rev Immunol.* 1989; 7:579-599. (Biology)
- Fujiura Y, Kawaguchi M, Kondo Y, et al. Development of CD8 alpha alpha+ intestinal intraepithelial T cells in beta 2-microglobulin- and/or TAP1-deficient mice. *J Immunol.* 1996; 156(8):2710-2715. (Biology)
- Hathcock KS. T cell depletion by cytotoxic elimination. *Curr Protoc Immunol.* 1991; 1:3.4.1-3.4.3. (Biology)
- Janeway CA Jr. The T cell receptor as a multicomponent signalling machine: CD4/CD8 coreceptors and CD45 in T cell activation. *Annu Rev Immunol.* 1992; 10:645-674. (Biology)
- Kruisbeek AM, Shevach EM. Proliferative assays for T cell function. *Curr Protoc Immunol.* 2004; 3:3.12.1-3.12.14. (Biology)
- Ledbetter JA, Herzenberg LA. Xenogeneic monoclonal antibodies to mouse lymphoid differentiation antigens. *Immunol Rev.* 1979; 47:63-90. (Biology)
- Ledbetter JA, Rouse RV, Micklem HS, Herzenberg LA. T cell subsets defined by expression of Lyt-1,2,3 and Thy-1 antigens. Two-parameter immunofluorescence and cytotoxicity analysis with monoclonal antibodies modifies current views. *J Exp Med.* 1980; 152(2):280-295. (Biology)
- Ledbetter JA, Seaman WE, Tsu TT, Herzenberg LA. Lyt-2 and Lyt-3 antigens are on two different polypeptide subunits linked by disulfide bonds. Relationship of subunits to T cell cytolytic activity. *J Exp Med.* 1981; 153(6):1503-1516. (Biology)
- LeFrancis L. Extrathymic differentiation of intraepithelial lymphocytes: generation of a separate and unequal T-cell repertoire. *Immunol Today.* 1991; 12(12):436-438. (Biology)
- Leishman AJ, Naidenko OV, Attinger A, et al. T cell responses modulated through interaction between CD8alpha and the nonclassical MHC class I molecule, TL. *Science.* 2001; 294(5548):1848-1849. (Biology)
- MacDonald HR, Schreyer M, Howe RC, Bron C. Selective expression of CD8 alpha (Lyt-2) subunit on activated thymic gamma/delta cells. *Eur J Immunol.* 1990; 20(4):927-930. (Biology)
- Mitnacht R, Bischof A, Torres-Nagel N, Hunig T. Opposite CD4/CD8 lineage decisions of CD4+8+ mouse and rat thymocytes to equivalent triggering signals: correlation with thymic expression of a truncated CD8 alpha chain in mice but not rats. *J Immunol.* 1998; 160(2):700-707. (Biology)
- Murosaki S, Yoshikai Y, Ishida A, et al. Failure of T cell receptor V beta negative selection in murine intestinal intra-epithelial lymphocytes. *Int Immunol.* 1991; 3(10):1005-1013. (Biology)
- Nakayama K, Nakayama K, Negishi I, et al. Requirement for CD8 beta chain in positive selection of CD8-lineage T cells. *Science.* 1994; 263(5150):1131-1133. (Biology)
- Negm HI, Mansour MH, Saad AH, Abdel Halim RS. Structural characterization of an Lyt-2/3 homolog expressed on Bufo regularis lymphocytes. *Comp Biochem Physiol B Biochem Mol Biol.* 1996; 113(1):79-87. (Biology)
- O'Rourke AM, Mescher MF. The roles of CD8 in cytotoxic T lymphocyte function. *Immunol Today.* 1993; 14(4):183-188. (Biology)
- Rocha B, Vassalli P, Guy-Grand D. The extrathymic T-cell development pathway. *Immunol Today.* 1992; 14(3):140-141. (Biology)
- Sydora BC, Brossay L, Hagenbaugh A, Kronenberg M, Cheroute H. TAP-independent selection of CD8+ intestinal intraepithelial lymphocytes. *J Immunol.* 1996; 156(11):4209-4216. (Biology)
- Traver D, Akashi K, Manz M, et al. Development of CD8alpha-positive dendritic cells from a common myeloid progenitor. *Science.* 2000; 290(5499):2152-2154. (Biology)
- van Ewijk W, van Soest PL, van den Engh GJ. Fluorescence analysis and anatomic distribution of mouse T lymphocyte subsets defined by monoclonal antibodies to the antigens Thy-1, Lyt-1, Lyt-2, and T-200. *J Immunol.* 1981; 127(6):2594-2604. (Biology)
- Walker ID, Murray BJ, Hogarth PM, Kelso A, McKenzie IF. Comparison of thymic and peripheral T cell Ly-2/3 antigens. *Eur J Immunol.* 1984; 14(10):906-910. (Biology)
- Wang J, Klein JR. Thymus-neuroendocrine interactions in extrathymic T cell development. *Science.* 1994; 265(5180):1860-1862. (Biology)
- Zamoyska R, Derham P, Gorman SD, et al. Inability of CD8 alpha' polypeptides to associate with p56lck correlates with impaired function in vitro and lack of expression in vivo. *Nature.* 1989; 342(6247):278-281. (Biology)
- Zamoyska R, Vollmer AC, Sizer KC, Liaw CW, Parnes JR. Two Lyt-2 polypeptides arise from a single gene by alternative splicing patterns of mRNA. *Cell.* 1985; 43(1):153-163. (Biology)
- Zamoyska R. The CD8 coreceptor revisited: one chain good, two chains better. *Immunol.* 1994; 1(4):243-246. (Biology)