

Technical Data Sheet

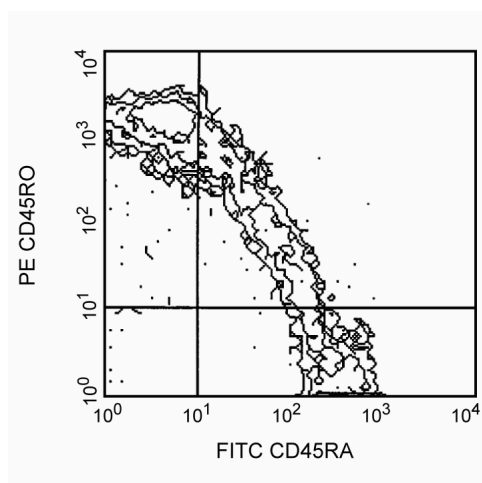
PE Mouse Anti-Human CD45RO

Product Information

Material Number:	561889
Alternate Name:	CD45R; PTPRC; LCA; Leukocyte common antigen; GP180; LY5; T200
Size:	25 tests
Vol. per Test:	20 µl
Clone:	UCHL1
Immunogen:	Human IL-2-dependent T-cell line
Isotype:	Mouse (BALB/c) IgG2a, κ
Reactivity:	QC Testing: Human
Workshop:	IV N31
Storage Buffer:	Aqueous buffered solution containing BSA and ≤0.09% sodium azide.

Description

The UCHL1 monoclonal antibody specifically reacts with the 180 kDa isoform of CD45 (aka, the Leukocyte Common Antigen). CD45RO is a type I transmembrane glycoprotein that has cytoplasmic protein tyrosine phosphatase activity and functions in signal transduction pathways. This CD45 isoform does not include amino acid sequences encoded by the variable CD45 exons A, B, or C. CD45RO is expressed on most thymocytes, activated T cells, memory T cells, granulocytes and monocytes, but only on a proportion of resting T cells. CD45RO and CD45RA antibodies seem to define complementary, predominantly non-overlapping, populations in resting peripheral T cells, demonstrating heterogeneity within the CD8 and CD4 subpopulations. CD45RO binds to CD22.



Profile of peripheral lymphocytes analyzed on a FACScan (BDIS, San Jose, CA)

Preparation and Storage

Store undiluted at 4°C and protected from prolonged exposure to light. Do not freeze.

The monoclonal antibody was purified from tissue culture supernatant or ascites by affinity chromatography.

The antibody was conjugated with R-PE under optimum conditions, and unconjugated antibody and free PE were removed.

Application Notes

Application

Flow cytometry	Routinely Tested
----------------	------------------

Suggested Companion Products

Catalog Number	Name	Size	Clone
555574	PE Mouse IgG2a, κ Isotype Control	100 tests	G155-178
561882	FITC Mouse Anti-Human CD45RA	25 tests	HI100
554656	Stain Buffer (FBS)	500 ml	(none)

BD Biosciences

bdbiosciences.com

United States	Canada	Europe	Japan	Asia Pacific	Latin America/Caribbean
877.232.8995	888.268.5430	32.53.720.550	0120.8555.90	65.6861.0633	0800.771.7157

For country-specific contact information, visit bdbiosciences.com/how_to_order/

Conditions: The information disclosed herein is not to be construed as a recommendation to use the above product in violation of any patents. BD Biosciences will not be held responsible for patent infringement or other violations that may occur with the use of our products. Purchase does not include or carry any right to resell or transfer this product either as a stand-alone product or as a component of another product. Any use of this product other than the permitted use without the express written authorization of Becton Dickinson and Company is strictly prohibited.

For Research Use Only. Not for use in diagnostic or therapeutic procedures. Not for resale.

BD, BD Logo and all other trademarks are the property of Becton, Dickinson and Company. ©2011 BD



Product Notices

1. This reagent has been pre-diluted for use at the recommended Volume per Test. We typically use 1×10^6 cells in a 100- μ l experimental sample (a test).
2. Since applications vary, each investigator should titrate the reagent to obtain optimal results.
3. Please refer to www.bdbiosciences.com/pharming/en/protocols for technical protocols.
4. For fluorochrome spectra and suitable instrument settings, please refer to our Fluorochrome Web Page at www.bdbiosciences.com/colors.
5. Caution: Sodium azide yields highly toxic hydrazoic acid under acidic conditions. Dilute azide compounds in running water before discarding to avoid accumulation of potentially explosive deposits in plumbing.
6. Source of all serum proteins is from USDA inspected abattoirs located in the United States.
7. An isotype control should be used at the same concentration as the antibody of interest.

References

- Barclay NA, Brown MH, Birkeland ML, et al, ed. *The Leukocyte Antigen FactsBook*. San Diego, CA: Academic Press; 1997. (Biology)
- Knapp W, Dorken B, Rieber EP, et al, ed. *Leucocyte Typing IV*. New York: Oxford University Press; 1989:1-1208. (Clone-specific)
- Schlossman SF, Boumsell L, Gilks W, et al, ed. *Leukocyte Typing V: White Cell Differentiation Antigens*. New York: Oxford University Press; 1995. (Biology)
- Smith SH, Brown MH, Rowe D, Callard RE, Beverley PC. Functional subsets of human helper-inducer cells defined by a new monoclonal antibody, UCHL1. *Immunology*. 1986; 58(1):63-70. (Biology)