

Technical Data Sheet

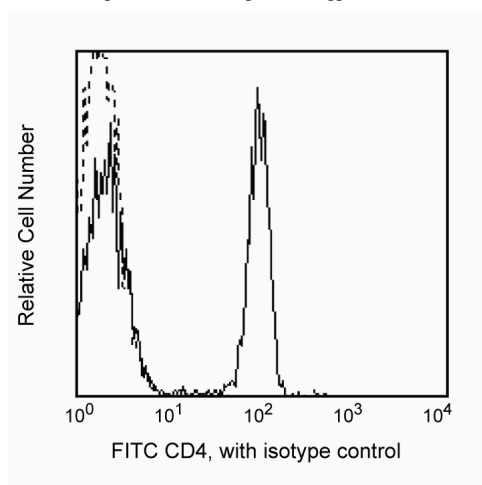
FITC Mouse Anti-Human CD4

Product Information

Material Number:	561842
Size:	500 tests
Vol. per Test:	5 µl
Clone:	RPA-T4
Isotype:	Mouse IgG1, κ
Reactivity:	QC Testing: Human
Workshop:	IV T114
Storage Buffer:	Aqueous buffered solution containing BSA and ≤0.09% sodium azide.

Description

The RPA-T4 clone reacts with CD4, a 59 kDa single-chain transmembrane glycoprotein [receptor for human immunodeficiency virus (HIV)] present on T-helper/inducer cell populations. This antibody binds to the D1 domain (CDR1 and CDR3 epitopes) of the CD4 antigen and reacts with approximately 80% of thymocytes and 45% of peripheral blood lymphocytes. CD4 is also present in low density on peripheral blood monocytes. RPA-T4 is capable of blocking HIV-1, gp120, and inhibits syncytium formation.



Profile of peripheral blood lymphocytes analyzed on a BD FACScan™ (BDIS, San Jose, CA)

Preparation and Storage

Store undiluted at 4°C and protected from prolonged exposure to light. Do not freeze.

The monoclonal antibody was purified from tissue culture supernatant or ascites by affinity chromatography.

The antibody was conjugated with FITC under optimum conditions, and unreacted FITC was removed.

Application Notes

Application

Flow cytometry	Routinely Tested
----------------	------------------

Suggested Companion Products

Catalog Number	Name	Size	Clone
555748	FITC Mouse IgG1, κ Isotype Control	100 tests	MOPC-21
554656	Stain Buffer (FBS)	500 ml	(none)

Product Notices

1. This reagent has been pre-diluted for use at the recommended Volume per Test. We typically use 1×10^6 cells in a 100-µl experimental sample (a test).
2. Since applications vary, each investigator should titrate the reagent to obtain optimal results.
3. Please refer to www.bdbiosciences.com/pharmingen/protocols for technical protocols.
4. Caution: Sodium azide yields highly toxic hydrazoic acid under acidic conditions. Dilute azide compounds in running water before discarding to avoid accumulation of potentially explosive deposits in plumbing.

BD Biosciences

bdbiosciences.com

United States 877.232.8995 Canada 888.268.5430 Europe 32.53.720.550 Japan 0120.8555.90 Asia Pacific 65.6861.0633 Latin America/Caribbean 0800.771.7157

For country-specific contact information, visit bdbiosciences.com/how_to_order/

Conditions: The information disclosed herein is not to be construed as a recommendation to use the above product in violation of any patents. BD Biosciences will not be held responsible for patent infringement or other violations that may occur with the use of our products. Purchase does not include or carry any right to resell or transfer this product either as a stand-alone product or as a component of another product. Any use of this product other than the permitted use without the express written authorization of Becton Dickinson and Company is strictly prohibited.

For Research Use Only. Not for use in diagnostic or therapeutic procedures. Not for resale.

BD, BD Logo and all other trademarks are the property of Becton, Dickinson and Company. ©2011 BD



5. Source of all serum proteins is from USDA inspected abattoirs located in the United States.
6. For fluorochrome spectra and suitable instrument settings, please refer to our Fluorochrome Web Page at www.bdbiosciences.com/colors.
7. An isotype control should be used at the same concentration as the antibody of interest.

References

Knapp W, Dorken B, Rieber EP, et al, ed. *Leukocyte Typing IV*. New York: Oxford University Press; 1989:1-1208. (Clone-specific)

Schlossman SF, Boumsell L, Gilks W, et al, ed. *Leukocyte Typing V: White Cell Differentiation Antigens*. New York: Oxford University Press; 1995. (Clone-specific)