

Technical Data Sheet

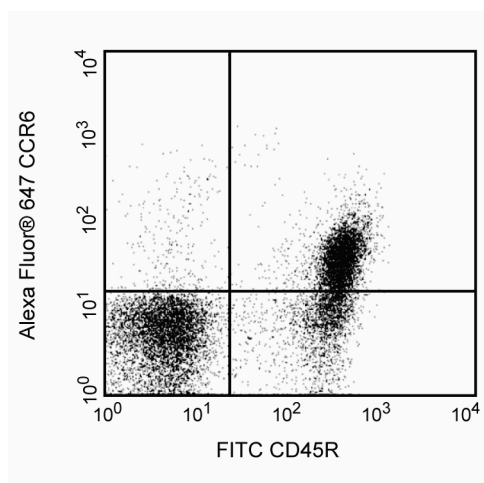
Alexa Fluor® 647 Rat Anti-Mouse CD196

Product Information

Material Number:	561753
Alternate Name:	CCR6, BN-1, CKR-L3, DRY6, KY411, GPR-CY4, STRL22
Size:	25 µg
Concentration:	0.2 mg/ml
Clone:	140706
Immunogen:	Mouse CCR6-transfected Rat Cell Line
Isotype:	Rat IgG2a
Reactivity:	QC Testing: Mouse
Storage Buffer:	Aqueous buffered solution containing ≤0.09% sodium azide.

Description

The 140706 monoclonal antibody reacts with mouse CD196 (CCR6), a CC chemokine receptor that is expressed on B lymphocytes and subsets of T and dendritic cells. The known ligand for CCR6 is CCL20/MIP-3 α , and together they regulate the migration and recruitment of antigen-presenting and immunocompetent cells during inflammatory and immunological responses.



Flow cytometric analysis of CD196 on mouse splenocytes. BALB/c splenocytes were stained with Alexa Fluor® 647 Rat Anti-Mouse CD196 and FITC Rat Anti-Mouse CD45R/B220 (Cat. No. 553087 or 553088). For data analysis, lymphocytes were selected by their scatter profile, and the positions of the quadrant markers were determined by staining with Alexa Fluor® 647 Rat IgG2a, κ Isotype Control (Cat. No. 557690) and FITC Rat IgG2a, κ Isotype Control (Cat. No. 553929). Flow cytometry was performed on a BD FACSCalibur™ flow cytometry system.

Preparation and Storage

Store undiluted at 4°C and protected from prolonged exposure to light. Do not freeze.

The monoclonal antibody was purified from tissue culture supernatant or ascites by affinity chromatography.

The antibody was conjugated to Alexa Fluor® 647 under optimum conditions, and unreacted Alexa Fluor® 647 was removed.

Application Notes

Application

Flow cytometry	Routinely Tested
----------------	------------------

Suggested Companion Products

Catalog Number	Name	Size	Clone
557690	Alexa Fluor® 647 Rat IgG2a, κ Isotype Control	0.1 mg	R35-95
553087	FITC Rat Anti-Mouse CD45R/B220	0.1 mg	RA3-6B2
554656	Stain Buffer (FBS)	500 ml	(none)

BD Biosciences

bdbiosciences.com

United States	Canada	Europe	Japan	Asia Pacific	Latin America/Caribbean
877.232.8995	800.268.5430	32.2.400.98.95	0120.8555.90	65.6861.0633	55.11.5185.9995

For country contact information, visit bdbiosciences.com/contact

Conditions: The information disclosed herein is not to be construed as a recommendation to use the above product in violation of any patents. BD Biosciences will not be held responsible for patent infringement or other violations that may occur with the use of our products. Purchase does not include or carry any right to resell or transfer this product either as a stand-alone product or as a component of another product. Any use of this product other than the permitted use without the express written authorization of Becton, Dickinson and Company is strictly prohibited.

For Research Use Only. Not for use in diagnostic or therapeutic procedures. Not for resale.

Unless otherwise noted, BD, BD Logo and all other trademarks are property of Becton, Dickinson and Company. © 2014 BD



Product Notices

1. Since applications vary, each investigator should titrate the reagent to obtain optimal results.
2. An isotype control should be used at the same concentration as the antibody of interest.
3. Caution: Sodium azide yields highly toxic hydrazoic acid under acidic conditions. Dilute azide compounds in running water before discarding to avoid accumulation of potentially explosive deposits in plumbing.
4. Alexa Fluor® 647 fluorochrome emission is collected at the same instrument settings as for allophycocyanin (APC).
5. The Alexa Fluor®, Pacific Blue™, and Cascade Blue® dye antibody conjugates in this product are sold under license from Molecular Probes, Inc. for research use only, excluding use in combination with microarrays, or as analyte specific reagents. The Alexa Fluor® dyes (except for Alexa Fluor® 430), Pacific Blue™ dye, and Cascade Blue® dye are covered by pending and issued patents.
6. Alexa Fluor® is a registered trademark of Molecular Probes, Inc., Eugene, OR.
7. For fluorochrome spectra and suitable instrument settings, please refer to our Multicolor Flow Cytometry web page at www.bdbiosciences.com/colors.
8. Please refer to www.bdbiosciences.com/pharming/protocols for technical protocols.

References

Hirota K, Yoshitomi H, Hashimoto M, et al. Preferential recruitment of CCR6-expressing Th17 cells to inflamed joints via CCL20 in rheumatoid arthritis and its animal model. *J Exp Med.* 2007; 204(12):2803-2812. (Clone-specific: Flow cytometry)

Kucharzik T, Hudson JT 3rd, Waikel RL, Martin WD, Williams IR. CCR6 expression distinguishes mouse myeloid and lymphoid dendritic cell subsets: demonstration using a CCR6 EGFP knock-in mouse. *Eur J Immunol.* 2002; 32(1):104-112. (Biology)

Varona R, Villares R, Carramolino L, et al. CCR6-deficient mice have impaired leukocyte homeostasis and altered contact hypersensitivity and delayed-type hypersensitivity responses. *J Clin Invest.* 2001; 107(6):R37-R45. (Biology)

BD Biosciences

bdbiosciences.com

United States	Canada	Europe	Japan	Asia Pacific	Latin America/Caribbean
877.232.8995	800.268.5430	32.2.400.98.95	0120.8555.90	65.6861.0633	55.11.5185.9995

For country contact information, visit bdbiosciences.com/contact

Conditions: The information disclosed herein is not to be construed as a recommendation to use the above product in violation of any patents. BD Biosciences will not be held responsible for patent infringement or other violations that may occur with the use of our products. Purchase does not include or carry any right to resell or transfer this product either as a stand-alone product or as a component of another product. Any use of this product other than the permitted use without the express written authorization of Becton, Dickinson and Company is strictly prohibited.

For Research Use Only. Not for use in diagnostic or therapeutic procedures. Not for resale.

Unless otherwise noted, BD, BD Logo and all other trademarks are property of Becton, Dickinson and Company. © 2014 BD

