

Technical Data Sheet

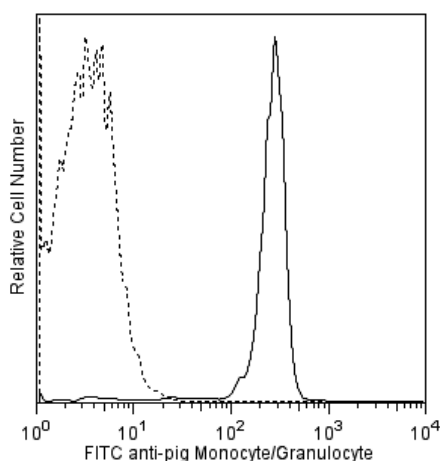
FITC Mouse Anti-Pig Monocyte/Granulocyte

Product Information

Material Number:	561498
Alternate Name:	SWC3; CD172a
Size:	50 µg
Concentration:	0.5 mg/ml
Clone:	74-22-15A
Immunogen:	dd miniature swine thymocytes
Isotype:	Mouse (BALB/c) IgG2b, κ
Reactivity:	QC Testing: Pig
Storage Buffer:	Aqueous buffered solution containing ≤0.09% sodium azide.

Description

The 74-22-15A (switch variant of 74-22-15) monoclonal antibody, an isotype class-switch variant of mAb 74-22-15, specifically binds to a 230-kDa protein expressed by most pig macrophages, peripheral blood monocytes and granulocytes, and few lymphocytes. mAb 74-22-15A does not crossreact with human or bovine cells. This clone was clustered as anti-SWC3a at the First International Swine CD workshop.



Flow cytometric analysis of anti-Pig Monocyte/Granulocyte staining on pig peripheral blood granulocytes. Pig whole blood was stained with FITC Mouse Anti-Pig Monocyte/Granulocyte (Cat. No. 561498; solid line histogram) or with a FITC Mouse IgG2b, κ Isotype Control (Cat. No. 559532; dashed line histogram). The erythrocytes were lysed with BD PharmLyse™ Lysing Buffer (Cat. No. 555899). The fluorescence histograms were derived from gated events with the forward and side light-scatter characteristics of viable granulocytes. Flow cytometry was performed using a BD LSR™ II Flow Cytometry System.

Preparation and Storage

The monoclonal antibody was purified from tissue culture supernatant or ascites by affinity chromatography.

The antibody was conjugated with FITC under optimum conditions, and unreacted FITC was removed.

Store undiluted at 4°C and protected from prolonged exposure to light. Do not freeze.

Application Notes

Application

Flow cytometry	Routinely Tested
----------------	------------------

Suggested Companion Products

Catalog Number	Name	Size	Clone
559532	FITC Mouse IgG2b, κ Isotype Control	0.25 mg	MPC-11
555899	Lysing Buffer	100 ml	(none)
554656	Stain Buffer (FBS)	500 ml	(none)

Product Notices

1. Since applications vary, each investigator should titrate the reagent to obtain optimal results.
2. An isotype control should be used at the same concentration as the antibody of interest.
3. Caution: Sodium azide yields highly toxic hydrazoic acid under acidic conditions. Dilute azide compounds in running water before discarding to avoid accumulation of potentially explosive deposits in plumbing.
4. For fluorochrome spectra and suitable instrument settings, please refer to our Fluorochrome Web Page at www.bdbiosciences.com/colors.

BD Biosciences

bdbiosciences.com

United States 877.232.8995 Canada 888.268.5430 Europe 32.53.720.550 Japan 0120.8555.90 Asia Pacific 65.6861.0633 Latin America/Caribbean 0800.771.7157

For country-specific contact information, visit bdbiosciences.com/how_to_order/

Conditions: The information disclosed herein is not to be construed as a recommendation to use the above product in violation of any patents. BD Biosciences will not be held responsible for patent infringement or other violations that may occur with the use of our products. Purchase does not include or carry any right to resell or transfer this product either as a stand-alone product or as a component of another product. Any use of this product other than the permitted use without the express written authorization of Becton Dickinson and Company is strictly prohibited.

For Research Use Only. Not for use in diagnostic or therapeutic procedures. Not for resale.

BD, BD Logo and all other trademarks are the property of Becton, Dickinson and Company. ©2011 BD



5. Please refer to www.bdbiosciences.com/pharmingen/protocols for technical protocols.

References

- Binns RM, Whyte A, Licence ST. The role of E-selectin in lymphocyte and polymorphonuclear cell recruitment into cutaneous delayed hypersensitivity reactions in sensitized pigs. *J Immunol*. 1996; 157(9):4094-4099. (Clone-specific: Immunohistochemistry)
- Blecha F, Kielian T, McVey DS. Workshop studies on monoclonal antibodies reactive against porcine myeloid cells. *Vet Immunol Immunopathol*. 1994; 43(1-3):269-272. (Biology)
- Haverson K, Bailey M, Higgins VR, Bland PW, Stokes CR. Characterization of monoclonal antibodies specific for monocytes, macrophages and granulocytes from porcine peripheral blood and mucosal tissues. *J Immunol Methods*. 1994; 170(2):233-245. (Biology)
- McCullough KC, Schaffner R, Natale V, Kim YB, Summerfield A. Phenotype of porcine monocytic cells: modulation of surface molecule expression upon monocyte differentiation into macrophages. *Vet Immunol Immunopathol*. 1997; 58(3-4):265-275. (Biology)
- Pescovitz MD, Lunney JK, Sachs DH. Preparation and characterization of monoclonal antibodies reactive with porcine PBL. *J Immunol*. 1984; 133(1):368-375. (Immunogen)
- Summerfield A, Haverson K, Thacker E, McCullough KC. Differentiation of porcine myeloid bone marrow haematopoietic cell populations. *Vet Immunol Immunopathol*. 2001; 80(1-2):121-129. (Biology)
- Sundt TM, Arn JS, Sachs DH. Patterns of T cell-accessory cell interaction in the generation of primary alloresponses in the pig. *Transplantation*. 1992; 54(5):911-916. (Clone-specific: Depletion)
- Yang H, Parkhouse RM. Phenotypic classification of porcine lymphocyte subpopulations in blood and lymphoid tissues. *Immunology*. 1996; 89(1):76-83. (Biology)