

Technical Data Sheet

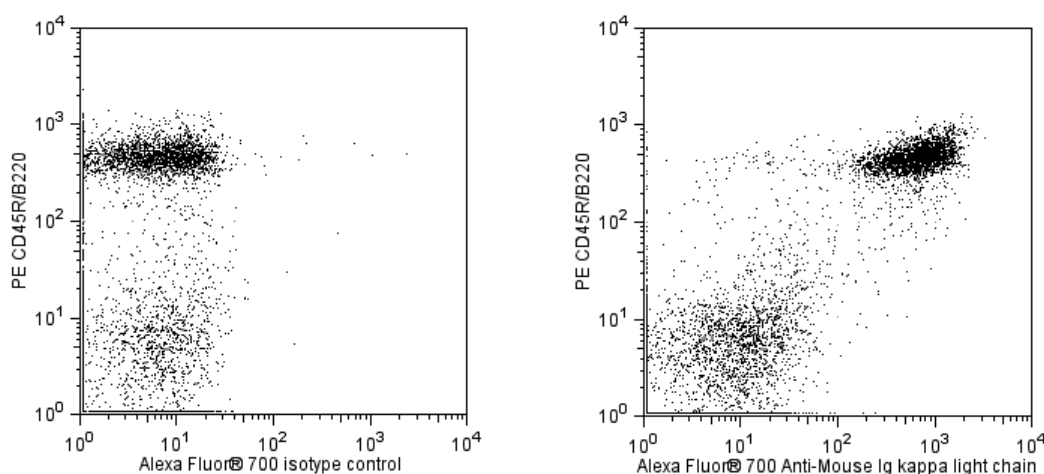
Alexa Fluor® 700 Rat Anti-Mouse Ig, κ Light Chain

Product Information

Material Number:	561351
Alternate Name:	Ig kappa chain C region; IGKC; Igk-C; Ig, κ
Size:	50 µg
Concentration:	0.2 mg/ml
Clone:	187.1
Immunogen:	Mouse IgG2b κ secreted by MPC-11 plasmacytoma
Isotype:	Rat (SD) IgG1, κ
Reactivity:	QC Testing: Mouse
Storage Buffer:	Aqueous buffered solution containing protein stabilizer and ≤0.09% sodium azide.

Description

The 187.1 monoclonal antibody specifically binds to kappa light chains of mouse immunoglobulins. The 187.1 antibody does not react with mouse λ1 or λ2 immunoglobulin lights chains or mouse immunoglobulin heavy chains.



Flow cytometric analysis of mouse Ig, κ light chain expression on mouse splenocytes. Splenocytes from BALB/c mice were stained with PE Rat anti-Mouse CD45R/B220 antibody (Cat. No. 553090/553089) and either with an Alexa Fluor® 700 Rat IgG1, κ Isotype Control (Cat. No. 558001, Left Panel) or with the Alexa Fluor® 700 Rat anti-Mouse Ig, κ Light Chain antibody (Cat. No. 561351, Right Panel). Two-color flow cytometric dot plots showing the correlated expression of Ig, κ light chain (or Ig isotype control staining) and CD45R/B220 were derived from gated events with the light scattering characteristics of viable splenocytes. Flow cytometry was performed using a BD™ LSR II Flow Cytometry System.

Preparation and Storage

The monoclonal antibody was purified from tissue culture supernatant or ascites by affinity chromatography.

The antibody was conjugated to Alexa Fluor® 700 under optimum conditions, and unreacted Alexa Fluor® 700 was removed.

Store undiluted at 4°C and protected from prolonged exposure to light. Do not freeze.

Application Notes

Application

Flow cytometry	Routinely Tested
----------------	------------------

Suggested Companion Products

Catalog Number	Name	Size	Clone
558001	Alexa Fluor® 700 Rat IgG1 κ Isotype Control	0.1 mg	R3-34
553090	PE Rat Anti-Mouse CD45R/B220	0.2 mg	RA3-6B2
553089	PE Rat Anti-Mouse CD45R/B220	0.1 mg	RA3-6B2
554656	Stain Buffer (FBS)	500 ml	(none)

BD Biosciences

bdbiosciences.com

United States	Canada	Europe	Japan	Asia Pacific	Latin America/Caribbean
877.232.8995	888.268.5430	32.53.720.550	0120.8555.90	65.6861.0633	0800.771.7157

For country-specific contact information, visit bdbiosciences.com/how_to_order/

Conditions: The information disclosed herein is not to be construed as a recommendation to use the above product in violation of any patents. BD Biosciences will not be held responsible for patent infringement or other violations that may occur with the use of our products. Purchase does not include or carry any right to resell or transfer this product either as a stand-alone product or as a component of another product. Any use of this product other than the permitted use without the express written authorization of Becton Dickinson and Company is strictly prohibited.

For Research Use Only. Not for use in diagnostic or therapeutic procedures. Not for resale.

BD, BD Logo and all other trademarks are the property of Becton, Dickinson and Company. ©2011 BD



Product Notices

1. Since applications vary, each investigator should titrate the reagent to obtain optimal results.
2. An isotype control should be used at the same concentration as the antibody of interest.
3. Please refer to www.bdbiosciences.com/pharmlngen/protocols for technical protocols.
4. The Alexa Fluor®, Pacific Blue™, and Cascade Blue® dye antibody conjugates in this product are sold under license from Molecular Probes, Inc. for research use only, excluding use in combination with microarrays, or as analyte specific reagents. The Alexa Fluor® dyes (except for Alexa Fluor® 430), Pacific Blue™ dye, and Cascade Blue® dye are covered by pending and issued patents.
5. Alexa Fluor® 488 fluorochrome emission is collected at the same instrument settings as for fluorescein isothiocyanate (FITC).
6. Alexa Fluor® is a registered trademark of Molecular Probes, Inc., Eugene, OR.
7. Caution: Sodium azide yields highly toxic hydrazoic acid under acidic conditions. Dilute azide compounds in running water before discarding to avoid accumulation of potentially explosive deposits in plumbing.
8. For fluorochrome spectra and suitable instrument settings, please refer to our Fluorochrome Web Page at www.bdbiosciences.com/colors.

References

Yelton DE, Desaymard C, Scharff MD. Use of monoclonal anti-mouse immunoglobulin to detect mouse antibodies. *Hybridoma*. 1981; 1(1):5-11. (Immunogen)