

Technical Data Sheet

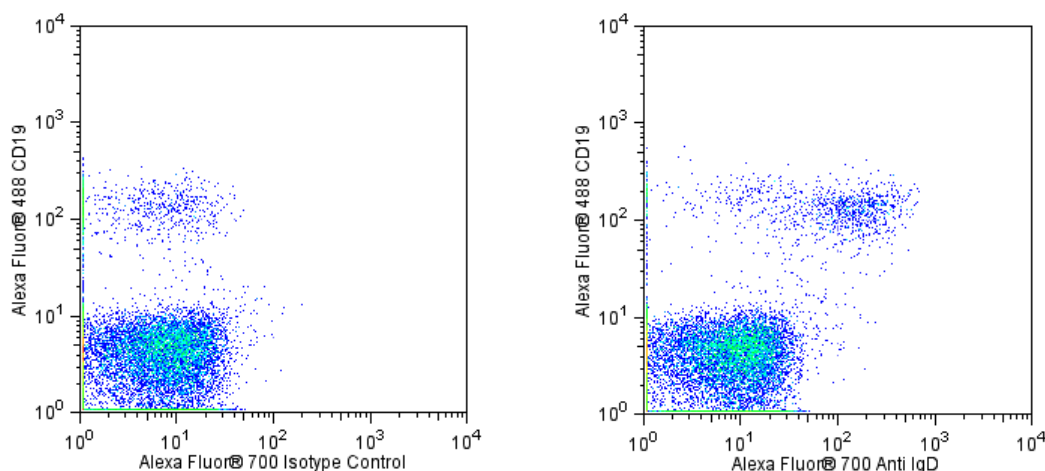
Alexa Fluor® 700 Mouse Anti-Human IgD

Product Information

Material Number:	561302
Alternate Name:	IGHD; Ig delta chain C region; Immunoglobulin heavy constant delta
Size:	50 tests
Vol. per Test:	5 µl
Clone:	IA6-2
Isotype:	Mouse IgG2a, κ
Reactivity:	QC Testing: Human
Storage Buffer:	Aqueous buffered solution containing protein stabilizer and ≤0.09% sodium azide.

Description

The IA6-2 monoclonal antibody specifically binds to the heavy chain of human Immunoglobulin D (IgD). IgD is a member of the immunoglobulin superfamily that exists in type 1-membrane (mIgD) and soluble glycoprotein forms. mIgD is expressed on mature naïve B cells (along with membrane IgM) and serves as a B-cell receptor for antigen (BCR). In response to antigen binding, the mIgD BCR, in association with other signaling molecules including CD79a and CD79b, can transduce activating or tolerizing signals intracellularly into B lymphocytes.



Flow cytometric analysis of IgD expression on human peripheral blood lymphocytes. Human peripheral blood mononuclear cells were incubated in complete tissue culture medium overnight in order to minimize subsequent nonspecific immunofluorescent staining. The cells were harvested and stained with Alexa Fluor® 488 Mouse anti-Human CD19 antibody (Cat. No. 557697) and with either an Alexa Fluor® 700 Mouse IgG2a, κ Isotype Control (Cat. No. 557880; Left Panel) or an Alexa Fluor® 700 Mouse anti-Human IgD antibody (Cat. No. 561302; Right Panel). The two-color flow cytometric dot plots showing the correlated expression of IgD (or Ig isotype control staining) versus CD19 were derived from events with the forward and side light-scatter characteristics of viable lymphocytes. Flow cytometry was performed using a BD™ LSR II Flow Cytometer System.

Preparation and Storage

The monoclonal antibody was purified from tissue culture supernatant or ascites by affinity chromatography.

The antibody was conjugated to Alexa Fluor® 700 under optimum conditions, and unreacted Alexa Fluor® 700 was removed.

Store undiluted at 4°C and protected from prolonged exposure to light. Do not freeze.

Application Notes

Application

Flow cytometry	Routinely Tested
----------------	------------------

BD Biosciences

bdbiosciences.com

United States	Canada	Europe	Japan	Asia Pacific	Latin America/Caribbean
877.232.8995	888.268.5430	32.53.720.550	0120.8555.90	65.6861.0633	0800.771.7157

For country-specific contact information, visit bdbiosciences.com/how_to_order/

Conditions: The information disclosed herein is not to be construed as a recommendation to use the above product in violation of any patents. BD Biosciences will not be held responsible for patent infringement or other violations that may occur with the use of our products. Purchase does not include or carry any right to resell or transfer this product either as a stand-alone product or as a component of another product. Any use of this product other than the permitted use without the express written authorization of Becton Dickinson and Company is strictly prohibited.

For Research Use Only. Not for use in diagnostic or therapeutic procedures. Not for resale.

BD, BD Logo and all other trademarks are the property of Becton, Dickinson and Company. ©2011 BD



Suggested Companion Products

<u>Catalog Number</u>	<u>Name</u>	<u>Size</u>	<u>Clone</u>
557880	Alexa Fluor® 700 Mouse IgG2a, κ Isotype Control	0.1 mg	G155-178
554656	Stain Buffer (FBS)	500 ml	(none)
557697	Alexa Fluor® 488 Mouse Anti-Human CD19	100 tests	HIB19

Product Notices

1. This reagent has been pre-diluted for use at the recommended Volume per Test. We typically use 1×10^6 cells in a 100- μ l experimental sample (a test).
2. An isotype control should be used at the same concentration as the antibody of interest.
3. The Alexa Fluor®, Pacific Blue™, and Cascade Blue® dye antibody conjugates in this product are sold under license from Molecular Probes, Inc. for research use only, excluding use in combination with microarrays, or as analyte specific reagents. The Alexa Fluor® dyes (except for Alexa Fluor® 430), Pacific Blue™ dye, and Cascade Blue® dye are covered by pending and issued patents.
4. Alexa Fluor® 700 has an adsorption maximum of ~700nm and a peak fluorescence emission of ~720nm. Before staining cells with this reagent, please confirm that your flow cytometer is capable of exciting the fluorochrome and discriminating the resulting fluorescence.
5. Alexa Fluor® is a registered trademark of Molecular Probes, Inc., Eugene, OR.
6. Caution: Sodium azide yields highly toxic hydrazoic acid under acidic conditions. Dilute azide compounds in running water before discarding to avoid accumulation of potentially explosive deposits in plumbing.
7. For fluorochrome spectra and suitable instrument settings, please refer to our Fluorochrome Web Page at www.bdbiosciences.com/colors.
8. Please refer to www.bdbiosciences.com/pharming/protocols for technical protocols.

References

- Preud'homme JL, Petit I, Barra A, Morel F, Lecron JC, Lelievre E. Structural and functional properties of membrane and secreted IgD. *Mol Immunol.* 2000; 37(15):871-887. (Biology)
- Wei C, Anolik J, Cappione A, et al. A new population of cells lacking expression of CD27 represents a notable component of the B cell memory compartment in systemic lupus erythematosus. *J Immunol.* 2007; 178(10):6624-6633. (Clone-specific: Flow cytometry)
- White MB, Shen AL, Word CJ, Tucker PW, Blattner FR. Human immunoglobulin D: genomic sequence of the delta heavy chain. *Science.* 1985; 228(4700):733-737. (Biology)