

Technical Data Sheet

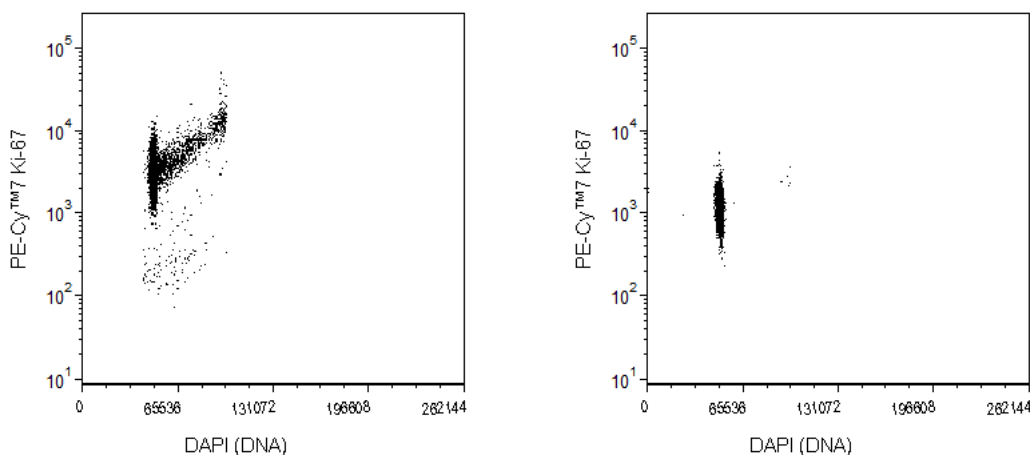
PE-Cy™7 Mouse anti-Ki-67

Product Information

Material Number:	561283
Alternate Name:	MKI67; Antigen identified by monoclonal antibody Ki-67; KIA
Size:	50 Tests
Vol. per Test:	5 µl
Clone:	B56
Immunogen:	Human Ki-67
Isotype:	Mouse IgG1, κ
Reactivity:	QC Testing: Human Tested in Development: Mouse Reported Reactivity: Rat, Rhesus
Storage Buffer:	Aqueous buffered solution containing BSA and ≤0.09% sodium azide.

Description

The B56 monoclonal antibody specifically binds to the Ki-67 antigen that is expressed in the nucleus of cycling cells (G1, S, G2, M cell cycle phases). During the G0 phase, the antigen cannot be detected. During interphase of the cell cycle, it is associated with nucleolar components, and it is on the surface of the chromosomes during M phase. Ki-67 is a large protein having 2 alternatively spliced isoforms, an N-terminal forkhead-associated domain, a C-terminal domain that binds to heterochromatin proteins, and multiple phosphorylation sites, the functions of which are still unclear. Because of the strict association of Ki-67 expression with cell proliferation, anti-Ki-67 antibodies are useful for the identification, quantification, and monitoring of growing cell populations.



Multicolor flow cytometric analysis of Ki-67 expression by proliferating Molt-4 and noncycling human peripheral blood mononuclear cells (PBMC). Proliferating Molt-4 cells and noncycling PBMC were fixed and permeabilized with 70% ice cold ethanol, washed, and stained with PE-Cy™7 Mouse Anti-Ki-67 antibody (Cat. No. 561283) according to the BD Biosciences support protocol, Flow Cytometry Staining Protocol for Detection of Ki-67. The cells were then counterstained with 4',6-Diamidino-2-phenylindole dihydrochloride (DAPI) (Sigma, Cat. No. D-9542) to stain double-stranded DNA. Two-color flow cytometric dot plots showing the correlated expression patterns of DAPI (DNA) staining versus Ki-67 were derived from gated events with the forward and side light-scatter characteristics of intact Molt-4 cells (Left Panel) or PBMC (Right Panel). Flow cytometry was performed using a BD LSR™ II Flow Cytometer System.

Preparation and Storage

Store undiluted at 4°C and protected from prolonged exposure to light. Do not freeze.

The monoclonal antibody was purified from tissue culture supernatant or ascites by affinity chromatography.

The antibody was conjugated with PE-Cy7 under optimum conditions, and unconjugated antibody and free PE-Cy7 were removed.

Application Notes

Application

Intracellular staining (flow cytometry)	Routinely Tested
---	------------------

BD Biosciences

bdbiosciences.com

United States 877.232.8995 Canada 866.979.9408 Europe 32.2.400.98.95 Japan 0120.8555.90 Asia Pacific 65.6861.0633 Latin America/Caribbean 55.11.5185.9995

For country contact information, visit bdbiosciences.com/contact

Conditions: The information disclosed herein is not to be construed as a recommendation to use the above product in violation of any patents. BD Biosciences will not be held responsible for patent infringement or other violations that may occur with the use of our products. Purchase does not include or carry any right to resell or transfer this product either as a stand-alone product or as a component of another product. Any use of this product other than the permitted use without the express written authorization of Becton, Dickinson and Company is strictly prohibited.

For Research Use Only. Not for use in diagnostic or therapeutic procedures. Not for resale.
© 2017 BD. BD, the BD Logo and all other trademarks are property of Becton, Dickinson and Company.

561283 Rev. 3



Suggested Companion Products

<u>Catalog Number</u>	<u>Name</u>	<u>Size</u>	<u>Clone</u>
556463	Propidium Iodide Staining Solution	2 mL	(none)
554656	Stain Buffer (FBS)	500 mL	(none)
554657	Stain Buffer (BSA)	500 mL	(none)

Product Notices

1. This reagent has been pre-diluted for use at the recommended Volume per Test. We typically use 1×10^6 cells in a 100- μ l experimental sample (a test).
2. An isotype control should be used at the same concentration as the antibody of interest.
3. Caution: Sodium azide yields highly toxic hydrazoic acid under acidic conditions. Dilute azide compounds in running water before discarding to avoid accumulation of potentially explosive deposits in plumbing.
4. Source of all serum proteins is from USDA inspected abattoirs located in the United States.
5. Please observe the following precautions: Absorption of visible light can significantly alter the energy transfer occurring in any tandem fluorochrome conjugate; therefore, we recommend that special precautions be taken (such as wrapping vials, tubes, or racks in aluminum foil) to prevent exposure of conjugated reagents, including cells stained with those reagents, to room illumination.
6. Species testing during development may have been performed with a different format of the same clone. Selected applications have been tested for cross-reactivity.
7. Warning: Some APC-Cy7 and PE-Cy7 conjugates show changes in their emission spectrum with prolonged exposure to formaldehyde. If you are unable to analyze fixed samples within four hours, we recommend that you use BD™ Stabilizing Fixative (Cat. No. 338036).
8. PE-Cy7 is a tandem fluorochrome composed of R-phycoerythrin (PE), which is excited by 488-nm light and serves as an energy donor, coupled to the cyanine dye Cy7, which acts as an energy acceptor and fluoresces maximally at 780 nm. PE-Cy7 tandem fluorochrome emission is collected in a detector for fluorescence wavelengths of 750 nm and higher. Although every effort is made to minimize the lot-to-lot variation in the efficiency of the fluorochrome energy transfer, differences in the residual emission from PE may be observed. Therefore, we recommend that individual compensation controls be performed for every PE-Cy7 conjugate. PE-Cy7 is optimized for use with a single argon ion laser emitting 488-nm light, and there is no significant overlap between PE-Cy7 and FITC emission spectra. When using dual-laser cytometers, which may directly excite both PE and Cy7, we recommend the use of cross-beam compensation during data acquisition or software compensation during data analysis.
9. For fluorochrome spectra and suitable instrument settings, please refer to our Multicolor Flow Cytometry web page at www.bdbiosciences.com/colors.
10. Cy is a trademark of GE Healthcare.
11. Please refer to www.bdbiosciences.com/pharming/protocols for technical protocols.

References

- Bruno S, Crissman HA, Bauer KD, Darzynkiewicz Z. Changes in cell nuclei during S phase: progressive chromatin condensation and altered expression of the proliferation-associated nuclear proteins Ki-67, cyclin (PCNA), p105, and p34. *Exp Cell Res*. 1991; 196(1):99-106. (Biology)
- Bruno S, Darzynkiewicz Z. Cell cycle dependent expression and stability of the nuclear protein detected by Ki-67 antibody in HL-60 cells. *Cell Prolif*. 1992; 25(1):31-40. (Biology)
- Byeon I-JL, Li H, Song H, Gronenborn AM, Tsai M-D. Sequential phosphorylation and multisite interactions characterize specific target recognition by the FHA domain of Ki67. *Nat Struct Mol Biol*. 2005; 12(11):987-993. (Biology)
- Ho DWY, Fan ST, To J, et al. Selective plasma filtration for treatment of fulminant hepatic failure induced by D-galactosamine in a pig model. *Gut*. 2002; 50:869-876. (Clone-specific)
- Kill IR. Localisation of the Ki-67 antigen within the nucleolus: evidence for a fibrillar-deficient region of the dense fibrillar component. *J Cell Sci*. 1996; 109(6):1253-1263. (Biology)
- Kouro T, Medina KL, Oritani K, Kincaid PW. Characteristics of early murine B-lymphocyte precursors and their direct sensitivity to negative regulators. *Blood*. 2001; 97(9):2708-2715. (Clone-specific: Flow cytometry)
- Pitcher CJ, Hagen SI, Walker JM, et al. Development and homeostasis of T cell memory in rhesus macaque. *J Immunol*. 2002; 168(1):29-43. (Clone-specific: Flow cytometry)
- Scholzen T, Endl E, Wohlenberg, et al. The Ki-67 protein interacts with members of the heterochromatin protein 1 (HP1) family: a potential role in the regulation of higher-order chromatin structure. *J Pathol*. 2001; 196(2):135-144. (Biology)
- Scholzen T, Gerdes J. The Ki-67 protein: from the known and the unknown. *J Cell Physiol*. 2000; 182(3):311-322. (Biology)
- Spargo LDJ, Cleland LG, Cockshell MP, Mayrhofer Graham. Recruitment and proliferation of CD4+ T cells in synovium following adoptive transfer of adjuvant-induced arthritis. *Int Immunol*. 2006; 18(6):897-910. (Clone-specific: Flow cytometry, Immunofluorescence)
- Starborg M, Gell K, Brundell E, Höög C. The murine Ki-67 cell proliferation antigen accumulates in the nucleolar and heterochromatic regions of interphase cells and at the periphery of the mitotic chromosomes in a process essential for cell cycle progression. *J Cell Sci*. 1996; 109(1):143-153. (Biology)