

Technical Data Sheet

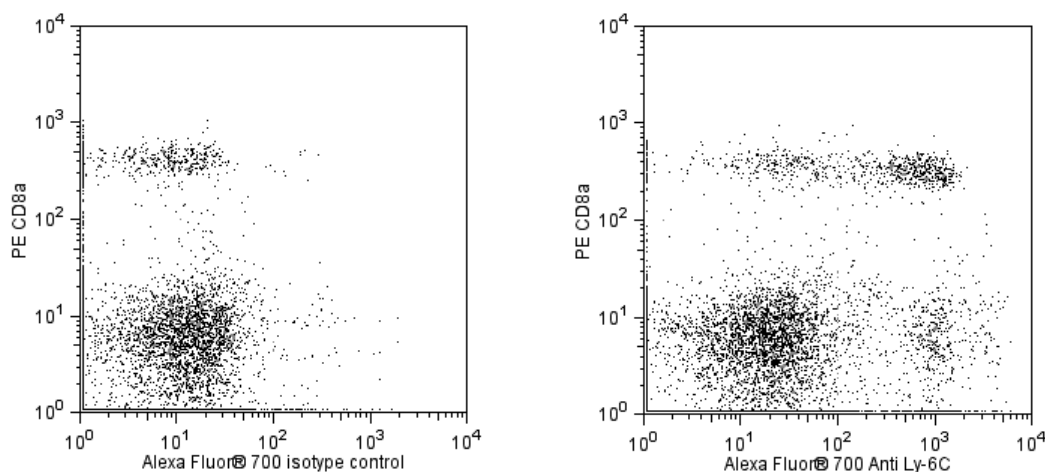
Alexa Fluor® 700 Rat Anti-Mouse Ly-6C

Product Information

Material Number:	561237
Alternate Name:	Ly6c; Lymphocyte antigen 6 complex, locus C; Lymphocyte antigen Ly-6C
Size:	50 µg
Concentration:	0.2 mg/ml
Clone:	AL-21
Immunogen:	Not reported
Isotype:	Rat IgM, κ
Reactivity:	QC Testing: Mouse
Storage Buffer:	Aqueous buffered solution containing protein stabilizer and ≤0.09% sodium azide.

Description

The AL-21 monoclonal antibody specifically binds to a non-polymorphic determinant of Ly-6C, a 14-17 kDa GPI-linked cell-surface antigen found on some monocyte/macrophage populations, granulocytes, endothelial cells, plasma cells, and thymocyte, NK-cell, and T-subsets. Mice with the Ly-6.2 alloantigen (eg, AKR, C57BL, C57BR, C57L, C58, DBA/2, PL, SJL, SWR, 129) have subsets of CD8⁺ and CD4⁺ Ly-6C⁺ T cells, while Ly-6.1 strains (eg, A, BALB/c, CBA, C3H/He, DBA/1, NZB) have only CD8⁺ Ly-6C⁺ T cells. Upregulation of Ly-6C expression on CD8⁺ T cells by interferons α and β and poly (I:C) has been described, and Ly-6C is a memory marker on CD8⁺ T cells.



Flow cytometric analysis of Ly-6C expression on mouse splenocytes. Splenocytes from BALB/c mice were stained with PE Rat Anti-Mouse CD8a antibody (Cat. No. 553033/553032/561095) and with either Alexa Fluor® 700 Rat IgM, κ Isotype Control (Cat. No. 561207, Left Panel) or with Alexa Fluor® 700 Rat Anti-Mouse Ly-6C antibody (Cat. No. 561237, Right Panel). Two-color flow cytometric dot plots showing the correlated expression of Ly-6C (or Ig isotype control staining) versus CD8a were derived from gated events with the forward and side light-scattering characteristics of viable splenocytes. Flow cytometry was performed with a BD™ LSR II Flow Cytometry System.

Preparation and Storage

The monoclonal antibody was purified from tissue culture supernatant or ascites by affinity chromatography.

The antibody was conjugated to Alexa Fluor® 700 under optimum conditions, and unreacted Alexa Fluor® 700 was removed.

Store undiluted at 4°C and protected from prolonged exposure to light. Do not freeze.

BD Biosciences

bdbiosciences.com

United States	Canada	Europe	Japan	Asia Pacific	Latin America/Caribbean
877.232.8995	888.268.5430	32.53.720.550	0120.8555.90	65.6861.0633	0800.771.7157

For country-specific contact information, visit bdbiosciences.com/how_to_order/

Conditions: The information disclosed herein is not to be construed as a recommendation to use the above product in violation of any patents. BD Biosciences will not be held responsible for patent infringement or other violations that may occur with the use of our products. Purchase does not include or carry any right to resell or transfer this product either as a stand-alone product or as a component of another product. Any use of this product other than the permitted use without the express written authorization of Becton Dickinson and Company is strictly prohibited.

For Research Use Only. Not for use in diagnostic or therapeutic procedures. Not for resale.

BD, BD Logo and all other trademarks are the property of Becton, Dickinson and Company. ©2011 BD



Application Notes

Application

Flow cytometry

Routinely Tested

Suggested Companion Products

<u>Catalog Number</u>	<u>Name</u>	<u>Size</u>	<u>Clone</u>
561207	Alexa Fluor® 700 Rat IgM, κ Isotype Control	0.1 mg	R4-22
554656	Stain Buffer (FBS)	500 ml	(none)
553033	PE Rat Anti-Mouse CD8a	0.2 mg	53-6.7
553032	PE Rat Anti-Mouse CD8a	0.1 mg	53-6.7
561095	PE Rat Anti-Mouse CD8a	25 µg	53-6.7

Product Notices

1. Since applications vary, each investigator should titrate the reagent to obtain optimal results.
2. An isotype control should be used at the same concentration as the antibody of interest.
3. Please refer to www.bdbiosciences.com/pharming/en/protocols for technical protocols.
4. The Alexa Fluor®, Pacific Blue™, and Cascade Blue® dye antibody conjugates in this product are sold under license from Molecular Probes, Inc. for research use only, excluding use in combination with microarrays, or as analyte specific reagents. The Alexa Fluor® dyes (except for Alexa Fluor® 430), Pacific Blue™ dye, and Cascade Blue® dye are covered by pending and issued patents.
5. Alexa Fluor® 700 has an adsorption maximum of ~700nm and a peak fluorescence emission of ~720nm. Before staining cells with this reagent, please confirm that your flow cytometer is capable of exciting the fluorochrome and discriminating the resulting fluorescence.
6. Alexa Fluor® is a registered trademark of Molecular Probes, Inc., Eugene, OR.
7. Caution: Sodium azide yields highly toxic hydrazoic acid under acidic conditions. Dilute azide compounds in running water before discarding to avoid accumulation of potentially explosive deposits in plumbing.
8. For fluorochrome spectra and suitable instrument settings, please refer to our Fluorochrome Web Page at www.bdbiosciences.com/colors.

References

- Cerwenka A, Carter LL, Reome JB, Swain SL, Dutton RW. In vivo persistence of CD8 polarized T cell subsets producing type 1 or type 2 cytokines. *J Immunol.* 1998; 161(1):97-105. (Biology)
- Jutila DB, Kurk S, Jutila MA.. Differences in the expression of Ly-6C on neutrophils and monocytes following PI-PLC hydrolysis and cellular activation.. *Immunol Lett.* 1994; 41(1):49-57. (Biology)
- Jutila MA, Kroese FG, Jutila KL, et al. Ly-6C is a monocyte/macrophage and endothelial cell differentiation antigen regulated by interferon-gamma. *Eur J Immunol.* 1988; 18(11):1819-1826. (Biology)
- Sato N, Yahata T, Santa K. Functional characterization of NK1.1 + Ly-6C+ cells. *Immunol Lett.* 1996; 1(54):1-5-9. (Biology)
- Takahama Y, Sharrow SO, Singer A. Expression of an unusual T cell receptor (TCR)-V beta repertoire by Ly-6C+ subpopulations of CD4+ and/or CD8+ thymocytes. Evidence for a developmental relationship between Ly-6C+ thymocytes and CD4-CD8-TCR-alpha beta+ thymocytes. *J Immunol.* 1991; 147(9):2883-2891. (Biology)
- Tough DF, Borrow P, Sprent J. Induction of bystander T cell proliferation by viruses and type I interferon in vivo. *Science.* 1996; 272(5270):1947-1950. (Biology)
- Wrammert J, Källberg E, Agace WW, Leanderson T. Ly6C expression differentiates plasma cells from other B cell subsets in mice. *Eur J Immunol.* 2002; 32(1):97-103. (Biology)