

Technical Data Sheet

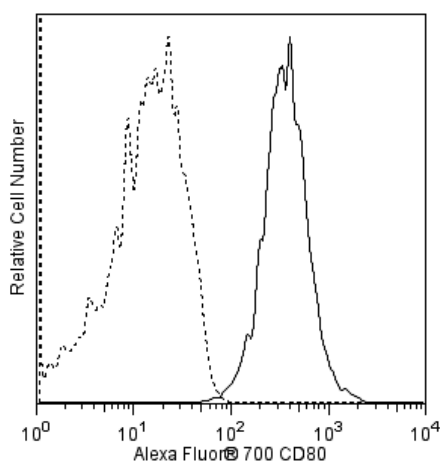
Alexa Fluor® 700 Mouse Anti-Human CD80

Product Information

Material Number:	561133
Alternate Name:	B7.1; B7-1; Activation B7-1 antigen; B7; BB1; CD28LG; CD28LG1; LAB7
Size:	50 tests
Vol. per Test:	5 µl
Clone:	L307.4
Isotype:	Mouse IgG1, κ
Reactivity:	QC Testing: Human
Workshop:	V B7.5
Storage Buffer:	Aqueous buffered solution containing protein stabilizer and ≤0.09% sodium azide.

Description

The L307.4 monoclonal antibody specifically reacts with B7/BB1, a 60 kDa transmembrane glycoprotein which was clustered as CD80 in the Fifth International Workshop on Human Leukocyte Differentiation Antigens. CD80, a member of the Ig supergene family, is expressed on activated B cells, macrophages, and dendritic cells. It is the ligand for two molecules expressed on T cells, CD28 and CD152 (CTLA-4). CD80 is also expressed on activated CD4-positive and CD8-positive T cells, appearing late after activation suggesting that activated T cells may be capable of autocrine costimulation via the CD28 activation pathway. The binding of CD28 by anti-CD28 or by CD80 results in T-cell activation and a signal for IL-2 production.



Flow cytometric analysis of CD80 expression on Raji cells. Human Raji cells were stained with either Alexa Fluor® 700 Mouse Anti-Human CD80 antibody (Cat. No. 561133; solid line histogram) or with a Alexa Fluor® 700 Mouse IgG1, κ Isotype Control (Cat. No. 557882 used at the same concentration; dashed line histogram). The fluorescence histograms were derived from events with the forward and side light-scatter characteristics of viable cells. Flow cytometry was performed on a BD LSR™ II Flow Cytometer System.

Preparation and Storage

Store undiluted at 4°C and protected from prolonged exposure to light. Do not freeze.

The monoclonal antibody was purified from tissue culture supernatant or ascites by affinity chromatography.

The antibody was conjugated to Alexa Fluor® 700 under optimum conditions, and unreacted Alexa Fluor® 700 was removed.

Application Notes

Application

Flow cytometry	Routinely Tested
----------------	------------------

BD Biosciences

bdbiosciences.com

United States	Canada	Europe	Japan	Asia Pacific	Latin America/Caribbean
877.232.8995	888.268.5430	32.53.720.550	0120.8555.90	65.6861.0633	0800.771.7157

For country-specific contact information, visit bdbiosciences.com/how_to_order/

Conditions: The information disclosed herein is not to be construed as a recommendation to use the above product in violation of any patents. BD Biosciences will not be held responsible for patent infringement or other violations that may occur with the use of our products. Purchase does not include or carry any right to resell or transfer this product either as a stand-alone product or as a component of another product. Any use of this product other than the permitted use without the express written authorization of Becton Dickinson and Company is strictly prohibited.

For Research Use Only. Not for use in diagnostic or therapeutic procedures. Not for resale.

BD, BD Logo and all other trademarks are the property of Becton, Dickinson and Company. ©2011 BD



Suggested Companion Products

<u>Catalog Number</u>	<u>Name</u>	<u>Size</u>	<u>Clone</u>
557882	Alexa Fluor® 700 Mouse IgG1, κ Isotype Control	0.1 mg	MOPC-21
554656	Stain Buffer (FBS)	500 ml	(none)

Product Notices

1. This reagent has been pre-diluted for use at the recommended Volume per Test. We typically use 1×10^6 cells in a 100- μ l experimental sample (a test).
2. An isotype control should be used at the same concentration as the antibody of interest.
3. Alexa Fluor® 700 has an adsorption maximum of ~700nm and a peak fluorescence emission of ~720nm. Before staining cells with this reagent, please confirm that your flow cytometer is capable of exciting the fluorochrome and discriminating the resulting fluorescence.
4. Alexa Fluor® is a registered trademark of Molecular Probes, Inc., Eugene, OR.
5. The Alexa Fluor®, Pacific Blue™, and Cascade Blue® dye antibody conjugates in this product are sold under license from Molecular Probes, Inc. for research use only, excluding use in combination with microarrays, or as analyte specific reagents. The Alexa Fluor® dyes (except for Alexa Fluor® 430), Pacific Blue™ dye, and Cascade Blue® dye are covered by pending and issued patents.
6. Caution: Sodium azide yields highly toxic hydrazoic acid under acidic conditions. Dilute azide compounds in running water before discarding to avoid accumulation of potentially explosive deposits in plumbing.
7. For fluorochrome spectra and suitable instrument settings, please refer to our Fluorochrome Web Page at www.bdbiosciences.com/colors.
8. Please refer to www.bdbiosciences.com/pharmingen/protocols for technical protocols.

References

- Azuma M, Yssel H, Phillips JH, Spits H, Lanier LL. Functional expression of B7/BB1 on activated T lymphocytes. *J Exp Med.* 1993; 177(3):845-850. (Biology)
- Behrens L, Kerschensteiner M, Misgeld T, Goebels N, Wekerle H, Hohlfeld R. Human muscle cells express a functional costimulatory molecule distinct from B7.1 (CD80) and B7.2 (CD86) in vitro and in inflammatory lesions. *J Immunol.* 1998; 161(11):5943-5951. (Biology)
- Freeman GJ, Cardoso AA, Boussiotis VA, et al. The BB1 monoclonal antibody recognizes both cell surface CD74 (MHC class II-associated invariant chain) as well as B7-1 (CD80), resolving the question regarding a third CD28/CTLA-4 counterreceptor. *J Immunol.* 1998; 161(6):2708-2715. (Biology)
- Koulova L, Clark EA, Shu G, Dupont B. The CD28 ligand B7/BB1 provides costimulatory signal for alloactivation of CD4+ T cells. *J Exp Med.* 1991; 173(3):759-762. (Biology)
- Schlossman SF, Boumsell L, Gilks W, et al, ed. *Leukocyte Typing V: White Cell Differentiation Antigens*. New York: Oxford University Press; 1995. (Clone-specific: Apoptosis)
- Schwartz RH. Costimulation of T lymphocytes: the role of CD28, CTLA-4, and B7/BB1 in interleukin-2 production and immunotherapy. *Cell.* 1992; 71(7):1065-1068. (Biology)