

## Technical Data Sheet

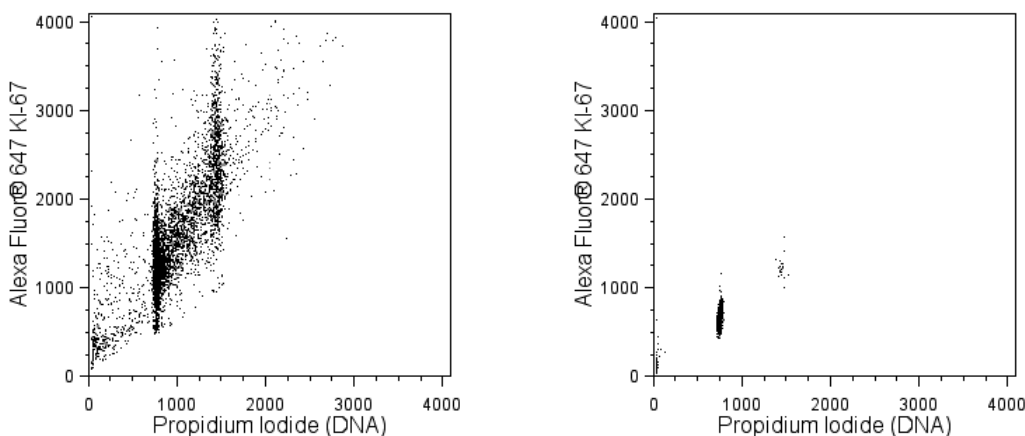
## Alexa Fluor® 647 Mouse anti-Ki-67

## Product Information

Material Number:	561126
Alternate Name:	MKI67; Antigen identified by monoclonal antibody Ki-67; KIA
Size:	50 Tests
Vol. per Test:	5 µl
Clone:	B56
Immunogen:	Human Ki-67
Isotype:	Mouse IgG1, κ
Reactivity:	QC Testing: Human Tested in Development: Mouse Reported Reactivity: Rat, Rhesus
Storage Buffer:	Aqueous buffered solution containing BSA and ≤0.09% sodium azide.

## Description

The B56 monoclonal antibody specifically binds to the Ki-67 antigen that is expressed in the nucleus of cycling cells (G1, S, G2, M cell cycle phases). During the G0 phase, the antigen cannot be detected. During interphase of the cell cycle, it is associated with nucleolar components, and it is on the surface of the chromosomes during M phase. Ki-67 is a large protein having 2 alternatively spliced isoforms, an N-terminal forkhead-associated domain, a C-terminal domain that binds to heterochromatin proteins, and multiple phosphorylation sites, the functions of which are still unclear. Because of the strict association of Ki-67 expression with cell proliferation, anti-Ki-67 antibodies are useful for the identification, quantification, and monitoring of growing cell populations.



**Flow cytometric analysis of Ki-67 expression by proliferating Jurkat and noncycling human peripheral blood mononuclear cells (PBMC).** Jurkat and PBMC were fixed and permeabilized with 70% ice cold ethanol, washed, and stained with Alexa Fluor® 647 Mouse Anti-Ki-67 antibody (Cat. No. 561126) according to the BD Biosciences support protocol, Flow Cytometry Staining Protocol for Detection of Ki-67. The cells were then RNase A (Sigma Cat. No. R-5500) treated and counterstained with Propidium Iodide Staining Solution (Cat. No. 556463) to stain DNA. Two-color flow cytometric dot plots showing the correlated expression patterns of Propidium Iodide (DNA) staining versus Ki-67 were derived from gated events with the forward and side light-scatter characteristics of intact Jurkat cells (Left Panel) or PBMC (Right Panel). Flow cytometry was performed using a BD LSR™ II flow cytometry system.

## Preparation and Storage

Store undiluted at 4°C and protected from prolonged exposure to light. Do not freeze.

The monoclonal antibody was purified from tissue culture supernatant or ascites by affinity chromatography.

The antibody was conjugated to Alexa Fluor® 647 under optimum conditions, and unreacted Alexa Fluor® 647 was removed.

## Application Notes

## Application

Intracellular staining (flow cytometry)	Routinely Tested
---	------------------

## BD Biosciences

bdbiosciences.com

United States	Canada	Europe	Japan	Asia Pacific	Latin America/Caribbean
877.232.8995	866.979.9408	32.2.400.98.95	0120.8555.90	65.6861.0633	55.11.5185.9995

For country contact information, visit [bdbiosciences.com/contact](http://bdbiosciences.com/contact)

Conditions: The information disclosed herein is not to be construed as a recommendation to use the above product in violation of any patents. BD Biosciences will not be held responsible for patent infringement or other violations that may occur with the use of our products. Purchase does not include or carry any right to resell or transfer this product either as a stand-alone product or as a component of another product. Any use of this product other than the permitted use without the express written authorization of Becton, Dickinson and Company is strictly prohibited.

For Research Use Only. Not for use in diagnostic or therapeutic procedures. Not for resale.

Unless otherwise noted, BD, BD Logo and all other trademarks are property of Becton, Dickinson and Company. © 2015 BD

561126 Rev. 3



## Suggested Companion Products

Catalog Number	Name	Size	Clone
556463	Propidium Iodide Staining Solution	2 mL	(none)
554656	Stain Buffer (FBS)	500 mL	(none)
557783	Alexa Fluor® 647 Mouse IgG1 κ Isotype control	50 Tests	MOPC-21
557732	Alexa Fluor® 647 Mouse IgG1 κ Isotype Control	100 Tests	MOPC-21
557714	Alexa Fluor® 647 Mouse IgG1 κ Isotype Control	100 Tests	MOPC-21

## Product Notices

1. This reagent has been pre-diluted for use at the recommended Volume per Test. We typically use  $1 \times 10^6$  cells in a 100- $\mu$ l experimental sample (a test).
2. Source of all serum proteins is from USDA inspected abattoirs located in the United States.
3. Caution: Sodium azide yields highly toxic hydrazoic acid under acidic conditions. Dilute azide compounds in running water before discarding to avoid accumulation of potentially explosive deposits in plumbing.
4. Species testing during development may have been performed with a different format of the same clone. Selected applications have been tested for cross-reactivity.
5. Alexa Fluor® 647 fluorochrome emission is collected at the same instrument settings as for allophycocyanin (APC).
6. Alexa Fluor® is a registered trademark of Molecular Probes, Inc., Eugene, OR.
7. The Alexa Fluor®, Pacific Blue™, and Cascade Blue® dye antibody conjugates in this product are sold under license from Molecular Probes, Inc. for research use only, excluding use in combination with microarrays, or as analyte specific reagents. The Alexa Fluor® dyes (except for Alexa Fluor® 430), Pacific Blue™ dye, and Cascade Blue® dye are covered by pending and issued patents.
8. For fluorochrome spectra and suitable instrument settings, please refer to our Multicolor Flow Cytometry web page at [www.bdbiosciences.com/colors](http://www.bdbiosciences.com/colors).
9. Please refer to [www.bdbiosciences.com/pharming/en/protocols](http://www.bdbiosciences.com/pharming/en/protocols) for technical protocols.

## References

Bruno S, Crissman HA, Bauer KD, Darzynkiewicz Z. Changes in cell nuclei during S phase: progressive chromatin condensation and altered expression of the proliferation-associated nuclear proteins Ki-67, cyclin (PCNA), p105, and p34. *Exp Cell Res*. 1991; 196(1):99-106. (Biology: Flow cytometry)

Bruno S, Darzynkiewicz Z. Cell cycle dependent expression and stability of the nuclear protein detected by Ki-67 antibody in HL-60 cells. *Cell Prolif*. 1992; 25(1):31-40. (Biology: Flow cytometry)

Byeon I-JL, Li H, Song H, Gronenborn AM, Tsai M-D. Sequential phosphorylation and multisite interactions characterize specific target recognition by the FHA domain of Ki67. *Nat Struct Mol Biol*. 2005; 12(11):987-993. (Biology)

Ho DWY, Fan ST, To J, et al. Selective plasma filtration for treatment of fulminant hepatic failure induced by D-galactosamine in a pig model. *Gut*. 2002; 50:869-876. (Clone-specific)

Kill IR. Localisation of the Ki-67 antigen within the nucleolus: evidence for a fibrillar-deficient region of the dense fibrillar component. *J Cell Sci*. 1996; 109(6):1253-1263. (Biology)

Kouro T, Medina KL, Oritani K, Kincade PW. Characteristics of early murine B-lymphocyte precursors and their direct sensitivity to negative regulators. *Blood*. 2001; 97(9):2708-2715. (Clone-specific: Flow cytometry)

Pitcher CJ, Hagen SI, Walker JM, et al. Development and homeostasis of T cell memory in rhesus macaque. *J Immunol*. 2002; 168(1):29-43. (Clone-specific: Flow cytometry)

Scholzen T, Endl E, Wohlenberg, et al. The Ki-67 protein interacts with members of the heterochromatin protein 1 (HP1) family: a potential role in the regulation of higher-order chromatin structure. *J Pathol*. 2001; 196(2):135-144. (Biology)

Scholzen T, Gerdes J. The Ki-67 protein: from the known and the unknown. *J Cell Physiol*. 2000; 182(3):311-322. (Biology)

Spargo LDJ, Cleland LG, Cockshell MP, Mayrhofer Graham. Recruitment and proliferation of CD4+ T cells in synovium following adoptive transfer of adjuvant-induced arthritis. *Int Immunol*. 2006; 18(6):897-910. (Clone-specific: Flow cytometry, Immunofluorescence)

Starborg M, Gell K, Brundell E, Höög C. The murine Ki-67 cell proliferation antigen accumulates in the nucleolar and heterochromatic regions of interphase cells and at the periphery of the mitotic chromosomes in a process essential for cell cycle progression. *J Cell Sci*. 1996; 109(1):143-153. (Biology)

## BD Biosciences

[bdbiosciences.com](http://bdbiosciences.com)

United States	Canada	Europe	Japan	Asia Pacific	Latin America/Caribbean
877.232.8995	866.979.9408	32.2.400.98.95	0120.8555.90	65.6861.0633	55.11.5185.9995

For country contact information, visit [bdbiosciences.com/contact](http://bdbiosciences.com/contact)

Conditions: The information disclosed herein is not to be construed as a recommendation to use the above product in violation of any patents. BD Biosciences will not be held responsible for patent infringement or other violations that may occur with the use of our products. Purchase does not include or carry any right to resell or transfer this product either as a stand-alone product or as a component of another product. Any use of this product other than the permitted use without the express written authorization of Becton, Dickinson and Company is strictly prohibited.

For Research Use Only. Not for use in diagnostic or therapeutic procedures. Not for resale.

Unless otherwise noted, BD, BD Logo and all other trademarks are property of Becton, Dickinson and Company. © 2015 BD

561126 Rev. 3

