

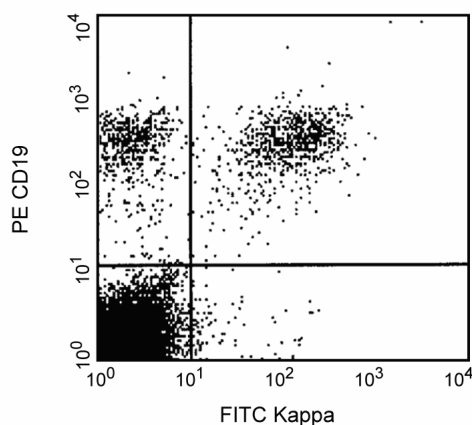
## Technical Data Sheet

**FITC Mouse Anti-Human Ig, κ Light Chain****Product Information**

<b>Material Number:</b>	<b>560950</b>
<b>Size:</b>	25 tests
<b>Vol. per Test:</b>	20 μl
<b>Clone:</b>	G20-193
<b>Isotype:</b>	Mouse IgG1, κ
<b>Reactivity:</b>	QC Testing: Human
<b>Storage Buffer:</b>	Aqueous buffered solution containing BSA and ≤0.09% sodium azide.

**Description**

The G20-193 monoclonal antibody specifically binds to human immunoglobulin light chain, kappa (κ). It does not react with human immunoglobulin λ light chains or human immunoglobulin heavy chains.



*Profile of peripheral blood lymphocytes analyzed on a FACScan (BDIS, San Jose, CA)*

**Preparation and Storage**

Store undiluted at 4°C and protected from prolonged exposure to light. Do not freeze.

The antibody was conjugated with FITC under optimum conditions, and unreacted FITC was removed.

The monoclonal antibody was purified from tissue culture supernatant or ascites by affinity chromatography.

**Application Notes****Application**

Flow cytometry	Routinely Tested
----------------	------------------

**Suggested Companion Products**

Catalog Number	Name	Size	Clone
555748	FITC Mouse IgG1, κ Isotype Control	100 tests	MOPC-21
555413	PE Mouse Anti-Human CD19	100 tests	HIB19

**Product Notices**

1. This reagent has been pre-diluted for use at the recommended Volume per Test. We typically use  $1 \times 10^6$  cells in a 100-μl experimental sample (a test).
2. Source of all serum proteins is from USDA inspected abattoirs located in the United States.
3. Caution: Sodium azide yields highly toxic hydrazoic acid under acidic conditions. Dilute azide compounds in running water before discarding to avoid accumulation of potentially explosive deposits in plumbing.
4. For fluorochrome spectra and suitable instrument settings, please refer to our Fluorochrome Web Page at [www.bdbiosciences.com/colors](http://www.bdbiosciences.com/colors).
5. Please refer to [www.bdbiosciences.com/pharmingen/protocols](http://www.bdbiosciences.com/pharmingen/protocols) for technical protocols.

**BD Biosciences**

[bdbiosciences.com](http://bdbiosciences.com)

<b>United States</b>	<b>Canada</b>	<b>Europe</b>	<b>Japan</b>	<b>Asia Pacific</b>	<b>Latin America/Caribbean</b>
877.232.8995	888.268.5430	32.53.720.550	0120.8555.90	65.6861.0633	0800.771.7157

For country-specific contact information, visit [bdbiosciences.com/how\\_to\\_order/](http://bdbiosciences.com/how_to_order/)

Conditions: The information disclosed herein is not to be construed as a recommendation to use the above product in violation of any patents. BD Biosciences will not be held responsible for patent infringement or other violations that may occur with the use of our products. Purchase does not include or carry any right to resell or transfer this product either as a stand-alone product or as a component of another product. Any use of this product other than the permitted use without the express written authorization of Becton Dickinson and Company is strictly prohibited.

For Research Use Only. Not for use in diagnostic or therapeutic procedures. Not for resale.

BD, BD Logo and all other trademarks are the property of Becton, Dickinson and Company. ©2011 BD

