

Technical Data Sheet

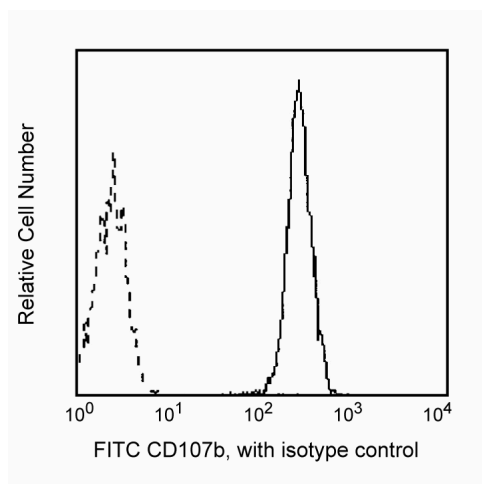
FITC Mouse Anti-Human CD107b

Product Information

Material Number:	560946
Alternate Name:	LAMP-2
Size:	25 tests
Vol. per Test:	20 µl
Clone:	H4B4
Isotype:	Mouse IgG1, κ
Reactivity:	QC Testing: Human
Workshop:	V P007
Storage Buffer:	Aqueous buffered solution containing BSA and ≤0.09% sodium azide.

Description

Reacts with the heavily glycosylated 120 kD lysosomal-associated protein, LAMP-2. LAMP-2 is a widely expressed intracellular antigen. It is also expressed on the surface of activated platelets, PHA-activated lymphocytes and some tumor cell lines, including U937 and KG1a. LAMP-2 has been shown to be a ligand for E-selectin-mediated cell adhesion. LAMP-1 (CD107a) and LAMP-2 are carriers for poly-N-acetyllactosamines, and are able to display sialyl Le^x termini.



Profile of intracellular staining of Jurkat cells fixed and permeabilized with Cytotfix/Cytoperm (Cat. No. 554714) and analyzed on a FACScan (BDIS, San Jose, CA).

Preparation and Storage

Store undiluted at 4°C and protected from prolonged exposure to light. Do not freeze.

The monoclonal antibody was purified from tissue culture supernatant or ascites by affinity chromatography.

The antibody was conjugated with FITC under optimum conditions, and unreacted FITC was removed.

Application Notes

Application

Intracellular staining (flow cytometry)	Routinely Tested
---	------------------

Suggested Companion Products

Catalog Number	Name	Size	Clone
555748	FITC Mouse IgG1, κ Isotype Control	100 tests	MOPC-21
554714	BD Cytotfix/Cytoperm™ Fixation/Permeablization Kit	250 tests	(none)

Product Notices

- This reagent has been pre-diluted for use at the recommended Volume per Test. We typically use 1×10^6 cells in a 100-µl experimental sample (a test).
- Source of all serum proteins is from USDA inspected abattoirs located in the United States.

BD Biosciences

bdbiosciences.com

United States 877.232.8995 Canada 888.268.5430 Europe 32.53.720.550 Japan 0120.8555.90 Asia Pacific 65.6861.0633 Latin America/Caribbean 0800.771.7157

For country-specific contact information, visit bdbiosciences.com/how_to_order/

Conditions: The information disclosed herein is not to be construed as a recommendation to use the above product in violation of any patents. BD Biosciences will not be held responsible for patent infringement or other violations that may occur with the use of our products. Purchase does not include or carry any right to resell or transfer this product either as a stand-alone product or as a component of another product. Any use of this product other than the permitted use without the express written authorization of Becton Dickinson and Company is strictly prohibited.

For Research Use Only. Not for use in diagnostic or therapeutic procedures. Not for resale.

BD, BD Logo and all other trademarks are the property of Becton, Dickinson and Company. ©2011 BD



3. Caution: Sodium azide yields highly toxic hydrazoic acid under acidic conditions. Dilute azide compounds in running water before discarding to avoid accumulation of potentially explosive deposits in plumbing.
4. Please refer to www.bdbiosciences.com/pharmingen/protocols for technical protocols.

References

- Chen JW, Cha Y, Yuksel KU, Gracy RW, August JT. Isolation and sequencing of a cDNA clone encoding lysosomal membrane glycoprotein mouse LAMP-1. Sequence similarity to proteins bearing onco-differentiation antigens. *J Biol Chem.* 1988; 263(18):8754-8758. (Biology)
- Febbraio M, Silverstein RL. Identification and characterization of LAMP-1 as an activation-dependent platelet surface glycoprotein. *J Biol Chem.* 1990; 265(30):18531-18537. (Biology)
- Sawada R, Lowe JB, Fukuda M. E-selectin-dependent adhesion efficiency of colonic carcinoma cells is increased by genetic manipulation of their cell surface lysosomal membrane glycoprotein-1 expression levels. *J Biol Chem.* 1993; 268(17):12675-12681. (Biology)
- Schlossman S, Boumell L, et al, ed. *Leucocyte Typing V.* New York: Oxford University Press; 1995. (Biology)