

Technical Data Sheet

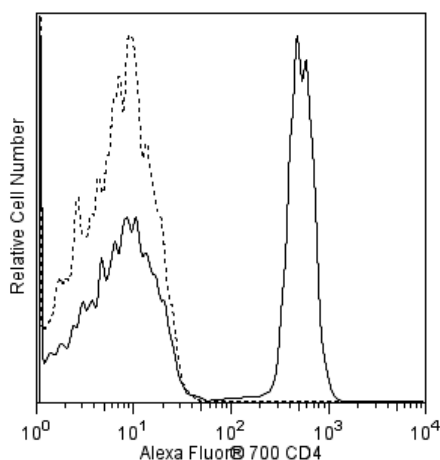
Alexa Fluor® 700 Mouse Anti-Human CD4

Product Information

Material Number:	560836
Alternate Name:	L3T4 ; T-cell surface antigen T4/Leu-3; W3/25 ; CD4 antigen (p55)
Size:	50 Tests
Vol. per Test:	5 µl
Clone:	L200
Immunogen:	Human HPB-ALL Cell Line
Isotype:	Mouse (BALB/c) IgG1, κ
Reactivity:	QC Testing: Rhesus, Cynomolgus, Baboon Tested in Development: Human
Storage Buffer:	Aqueous buffered solution containing protein stabilizer and ≤0.09% sodium azide.

Description

The L200 monoclonal antibody specifically binds to the human form of the 56 kDa transmembrane glycoprotein, CD4, which is present on the T-helper/inducer subset of normal human donor peripheral blood lymphocytes. The L200 antibody also cross-reacts with a subset of CD3-positive peripheral blood lymphocytes, but not monocytes, of both Rhesus and Cynomolgus Macaque monkeys. Cross-reactivity on both lymphocytes and monocytes (weak) from baboons is also observed. CD4 distribution on lymphocytes is similar for both human and monkey cells, with the majority of CD4-positive lymphocytes being CD8-negative and lacking reactivity with antibodies to B- or NK-cell markers.



Flow cytometric analysis of CD4 expression on Rhesus macaque peripheral blood lymphocytes. Rhesus macaque whole blood was stained with Alexa Fluor® 700 mouse anti-Human CD4 antibody (Cat. No. 560836; solid line histogram) or with a Alexa Fluor® 700 Mouse IgG1, κ Isotype Control (Cat. No. 557882; dashed line histogram). The erythrocytes were lysed with BD PharmLyse™ Lysing Buffer (Cat. No. 555899). The fluorescence histograms were derived from events with the forward and side scatter characteristics of viable lymphocytes. Flow cytometry was performed using a BD™ LSR II Flow Cytometer System.

Preparation and Storage

Store undiluted at 4°C and protected from prolonged exposure to light. Do not freeze.

The monoclonal antibody was purified from tissue culture supernatant or ascites by affinity chromatography.

The antibody was conjugated to Alexa Fluor® 700 under optimum conditions, and unreacted Alexa Fluor® 700 was removed.

Application Notes

Application

Flow cytometry	Routinely Tested
----------------	------------------

Suggested Companion Products

Catalog Number	Name	Size	Clone
557882	Alexa Fluor® 700 Mouse IgG1, κ Isotype Control	0.1 mg	MOPC-21
555899	Lysing Buffer	100 mL	(none)
554656	Stain Buffer (FBS)	500 mL	(none)
554657	Stain Buffer (BSA)	500 mL	(none)
349202	BD FACS™ Lysing Solution	100 mL	(none)

BD Biosciences

bdbiosciences.com

United States 877.232.8995 Canada 866.979.9408 Europe 32.2.400.98.95 Japan 0120.8555.90 Asia Pacific 65.6861.0633 Latin America/Caribbean 55.11.5185.9995

For country contact information, visit bdbiosciences.com/contact

Conditions: The information disclosed herein is not to be construed as a recommendation to use the above product in violation of any patents. BD Biosciences will not be held responsible for patent infringement or other violations that may occur with the use of our products. Purchase does not include or carry any right to resell or transfer this product either as a stand-alone product or as a component of another product. Any use of this product other than the permitted use without the express written authorization of Becton, Dickinson and Company is strictly prohibited.

For Research Use Only. Not for use in diagnostic or therapeutic procedures. Not for resale.

© 2017 BD. BD, the BD Logo and all other trademarks are property of Becton, Dickinson and Company.

560836 Rev. 2



Product Notices

1. This reagent has been pre-diluted for use at the recommended Volume per Test. We typically use 1×10^6 cells in a 100- μ l experimental sample (a test).
2. An isotype control should be used at the same concentration as the antibody of interest.
3. Caution: Sodium azide yields highly toxic hydrazoic acid under acidic conditions. Dilute azide compounds in running water before discarding to avoid accumulation of potentially explosive deposits in plumbing.
4. Alexa Fluor® 700 has an adsorption maximum of ~700nm and a peak fluorescence emission of ~720nm. Before staining cells with this reagent, please confirm that your flow cytometer is capable of exciting the fluorochrome and discriminating the resulting fluorescence.
5. Alexa Fluor® is a registered trademark of Molecular Probes, Inc., Eugene, OR.
6. The Alexa Fluor®, Pacific Blue™, and Cascade Blue® dye antibody conjugates in this product are sold under license from Molecular Probes, Inc. for research use only, excluding use in combination with microarrays, or as analyte specific reagents. The Alexa Fluor® dyes (except for Alexa Fluor® 430), Pacific Blue™ dye, and Cascade Blue® dye are covered by pending and issued patents.
7. For fluorochrome spectra and suitable instrument settings, please refer to our Multicolor Flow Cytometry web page at www.bdbiosciences.com/colors.
8. Species testing during development may have been performed with a different format of the same clone. Selected applications have been tested for cross-reactivity.
9. Please refer to www.bdbiosciences.com/pharmingen/protocols for technical protocols.

References

- Attanasio R, Dille D, Buck D, et al. Structural characterization of a cross-reactive idiotype shared by monoclonal antibodies specific for the human CD4 molecule. *J Biol Chem*. 1991; 266(22):14611-14619. (Biology)
- Bleavins MR, Brott DA, Alvey JD, de la Iglesia FA. Flow cytometric characterization of lymphocyte subpopulations in the cynomolgus monkey (*Macaca fascicularis*). *Vet Immunol Immunopathol*. 1993; 37(1):1-13. (Biology)
- Giorgi JV, Hultin LE, Desrosiers RC. The immunopathogenesis of retroviral diseases: no immunophenotypic alterations in T, B, and NK cell subsets in SIVmac239-challenged rhesus macaques protected by SIV delta nef vaccination. *J Med Primatol*. 1996; 25(3):186-191. (Biology)
- Indzhiiia LV, Yakovleva LA, Overbaugh J, et al. Baboon T cell lymphomas expressing the B cell-associated surface proteins CD40 and Bgp95. *J Clin Invest*. 1992; 12(3):225-236. (Biology)
- Jacobsen CN, Aasted B, Broe MK, Petersen JL. Reactivities of 20 anti-human monoclonal antibodies with leucocytes from ten different animal species. *Vet Immunol Immunopathol*. 1993; 39(4):461-466. (Biology)
- Knapp W. W. Knapp .. et al., ed. *Leucocyte typing IV : white cell differentiation antigens*. Oxford New York: Oxford University Press; 1989:1-1182. (Biology)
- Powell JD, McClure HM, Anderson D, Fultz PN, Sell KW, Ahmed-Ansari A. Phenotypic and functional differences in NK and LAK cells in the peripheral blood of sooty mangabeys and rhesus macaques. *Cell Immunol*. 1989; 124(1):107-118. (Biology)
- Savary CA, Lotzova E, Jackson HJ, Jardine JH, Ang KK. Analysis of interleukin-2-activated killer cells of rhesus monkeys: striking resemblance to the human system. *J Leukoc Biol*. 1993; 54(4):307-313. (Biology)
- Schlossman SF, Stuart F, Schlossman .. et al., ed. *Leucocyte typing V : white cell differentiation antigens : proceedings of the fifth international workshop and conference held in Boston, USA, 3-7 November, 1993*. Oxford: Oxford University Press; 1995(Biology)
- Tryphonas H, Lacroix F, Hayward S, Izaguirre C, Parenteau M, Fournier J. Cell surface marker evaluation of infant *Macaca* monkey leukocytes in peripheral whole blood using simultaneous dual-color immunophenotypic analysis. *J Med Primatol*. 1996; 25(2):89-105. (Biology)
- Verdier F, Aujoulat M, Condevaux F, Descotes J. Determination of lymphocyte subsets and cytokine levels in cynomolgus monkeys. *Toxicology*. 1995; 105(1):81-90. (Biology)
- Wilson AD, Shoostari M, Finerty S, Watkins P, Morgan AJ. Selection of monoclonal antibodies for the identification of lymphocyte surface antigens in the New World primate *Saguinus oedipus oedipus* (cotton top tamarin). *J Immunol Methods*. 1995; 178(2):195-200. (Biology)