

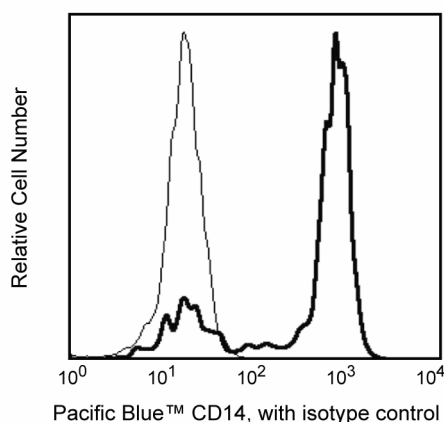
Technical Data Sheet

Pacific Blue™ Mouse Anti-Human CD14**Product Information**

Material Number:	558121
Alternate Name:	LPS receptor; LPS-R; Myeloid cell-specific leucine-rich glycoprotein
Size:	0.1 mg
Concentration:	0.2 mg/ml
Clone:	M5E2
Isotype:	Mouse IgG2a, κ
Reactivity:	QC Testing: Human Tested in Development: Rhesus, Cynomolgus, Baboon, Dog
Workshop:	II M34; III M329
Storage Buffer:	Aqueous buffered solution containing protein stabilizer and ≤0.09% sodium azide.

Description

The M5E2 monoclonal antibody specifically binds to CD14, a 53-55 kDa glycosylphosphatidylinositol (GPI)-anchored single chain glycoprotein expressed at high levels on monocytes. Additionally, the anti-CD14 antibody reacts with interfollicular macrophages, reticular dendritic cells, and some Langerhans cells. CD14 has been identified as a high affinity cell-surface receptor for complexes of lipopolysaccharide (LPS) and serum LPS-binding protein, LPB.



Profile of CD14 (M5E2) reactivity on peripheral blood monocytes analyzed by flow cytometry

Preparation and Storage

Store undiluted at 4°C and protected from prolonged exposure to light. Do not freeze.

The monoclonal antibody was purified from tissue culture supernatant or ascites by affinity chromatography.

The antibody is conjugated to Pacific Blue™ under optimum conditions, and unreacted Pacific Blue™ was removed.

Application Notes**Application**

Flow cytometry	Routinely Tested
----------------	------------------

Suggested Companion Products

Catalog Number	Name	Size	Clone
558118	Pacific Blue™ Mouse IgG2a, κ Isotype Control	0.1 mg	G155-178

BD Biosciences

bdbiosciences.com

United States	Canada	Europe	Japan	Asia Pacific	Latin America/Caribbean
877.232.8995	800.268.5430	32.2.400.98.95	0120.8555.90	65.6861.0633	55.11.5185.9995

For country contact information, visit bdbiosciences.com/contact

Conditions: The information disclosed herein is not to be construed as a recommendation to use the above product in violation of any patents. BD Biosciences will not be held responsible for patent infringement or other violations that may occur with the use of our products. Purchase does not include or carry any right to resell or transfer this product either as a stand-alone product or as a component of another product. Any use of this product other than the permitted use without the express written authorization of Becton, Dickinson and Company is strictly prohibited.

For Research Use Only. Not for use in diagnostic or therapeutic procedures. Not for resale.

Unless otherwise noted, BD, BD Logo and all other trademarks are property of Becton, Dickinson and Company. © 2014 BD



Product Notices

1. Since applications vary, each investigator should titrate the reagent to obtain optimal results.
2. An isotype control should be used at the same concentration as the antibody of interest.
3. Caution: Sodium azide yields highly toxic hydrazoic acid under acidic conditions. Dilute azide compounds in running water before discarding to avoid accumulation of potentially explosive deposits in plumbing.
4. Pacific Blue™ has a maximum absorption of 416 nm and maximum emission of 451 nm. Before staining with this reagent, please confirm that your flow cytometer is capable of exciting the fluorochrome and discriminating the resulting fluorescence.
5. The Alexa Fluor®, Pacific Blue™, and Cascade Blue® dye antibody conjugates in this product are sold under license from Molecular Probes, Inc. for research use only, excluding use in combination with microarrays, or as analyte specific reagents. The Alexa Fluor® dyes (except for Alexa Fluor® 430), Pacific Blue™ dye, and Cascade Blue® dye are covered by pending and issued patents.
6. Pacific Blue™ is a trademark of Molecular Probes, Inc., Eugene, OR.
7. For fluorochrome spectra and suitable instrument settings, please refer to our Multicolor Flow Cytometry web page at www.bdbiosciences.com/colors.
8. Please refer to www.bdbiosciences.com/pharming/protocols for technical protocols.

References

Knapp W, Dörken B, Gilks WR, et al, ed. *Leucocyte Typing IV*. New York, NY: Oxford University Press; 1989:1-1182. (Biology)

McMichael AJ, Beverly PCL, Gilks W, et al, ed. *Leukocyte Typing III: White Cell Differentiation Antigens*. New York: Oxford University Press; 1987. (Clone-specific)

Schlossman SF, Boumsell L, Gilks W, et al, ed. *Leukocyte Typing V: White Cell Differentiation Antigens*. Oxford: Oxford University Press; 1995. (Biology)

Wright SD, Ramos RA, Tobias PS, Ulevitch RJ, Mathison JC. CD14, a receptor for complexes of lipopolysaccharide (LPS) and LPS binding protein. *Science*. 1990; 249(4975):1431-1433. (Biology)

BD Biosciences

bdbiosciences.com

United States	Canada	Europe	Japan	Asia Pacific	Latin America/Caribbean
877.232.8995	800.268.5430	32.2.400.98.95	0120.8555.90	65.6861.0633	55.11.5185.9995

For country contact information, visit bdbiosciences.com/contact

Conditions: The information disclosed herein is not to be construed as a recommendation to use the above product in violation of any patents. BD Biosciences will not be held responsible for patent infringement or other violations that may occur with the use of our products. Purchase does not include or carry any right to resell or transfer this product either as a stand-alone product or as a component of another product. Any use of this product other than the permitted use without the express written authorization of Becton, Dickinson and Company is strictly prohibited.

For Research Use Only. Not for use in diagnostic or therapeutic procedures. Not for resale.

Unless otherwise noted, BD, BD Logo and all other trademarks are property of Becton, Dickinson and Company. © 2014 BD

