

Technical Data Sheet

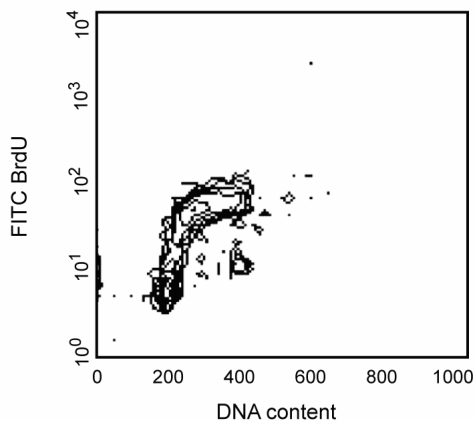
FITC Mouse Anti- BrdU Set

Product Information

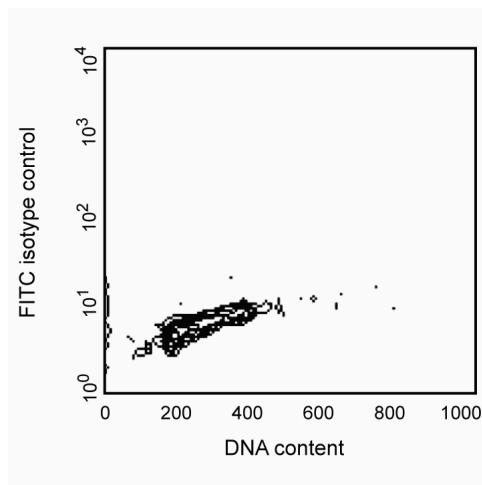
Material Number:	556028
Size:	100 tests
Reactivity:	QC Testing: Human
Component:	51-33284X
Description:	FITC Mouse Anti-BrdU (5-bromo-2'-deoxyuridine, 5-Bromouracil deoxyriboside, BUdR)
Size:	100 tests (1 ea)
Vol. per Test:	20 µl
Clone Name:	3D4
Isotype:	Mouse IgG1, κ
Storage Buffer:	Aqueous buffered solution containing BSA and ≤0.09% sodium azide.
Component:	51-35404X-2
Description:	FITC Mouse IgG1 κ Isotype Control
Size:	100 tests (1 ea)
Vol. per Test:	20 µl
Clone Name:	MOPC-21
Isotype:	Mouse IgG1, κ
Storage Buffer:	Aqueous buffered solution containing BSA and ≤0.09% sodium azide.

Description

Reacts with bromodeoxyuridine (BrdU) incorporated in place of thymidine during the S-phase of cycling cells. This technique enables measurement of the frequency of DNA-synthesizing cells in studies of cell activation and proliferation.



Profile of DNA content vs BrdU-FITC on REH cell line analyzed by flow cytometry



Profile of DNA content vs mlgG1-FITC on REH cell line analyzed by flow cytometry

Preparation and Storage

The monoclonal antibody was purified from tissue culture supernatant or ascites by affinity chromatography.

The antibody was conjugated with FITC under optimum conditions, and unreacted FITC was removed.

Store undiluted at 4°C and protected from prolonged exposure to light. Do not freeze.

BD Biosciences

bdbiosciences.com

United States	Canada	Europe	Japan	Asia Pacific	Latin America/Caribbean
877.232.8995	888.259.0187	32.53.720.550	0120.8555.90	65.6861.0633	55.11.5185.9995

For country-specific contact information, visit bdbiosciences.com/how_to_order/

Conditions: The information disclosed herein is not to be construed as a recommendation to use the above product in violation of any patents. BD Biosciences will not be held responsible for patent infringement or other violations that may occur with the use of our products. Purchase does not include or carry any right to resell or transfer this product either as a stand-alone product or as a component of another product. Any use of this product other than the permitted use without the express written authorization of Becton Dickinson and Company is strictly prohibited.

For Research Use Only. Not for use in diagnostic or therapeutic procedures. Not for resale.

BD, BD Logo and all other trademarks are the property of Becton, Dickinson and Company. ©2008 BD



Application Notes

Application

Intracellular staining (flow cytometry)	Routinely Tested
Flow cytometry	Routinely Tested

Recommended Assay Procedure:

Note: this product is routinely tested on fixed and permeabilized REH cell line with 70-80% cold ethanol. Please see the detail protocol at http://www.bdbiosciences.com/pharmingen/protocols/BrdU_Incorporation.shtml This product is NOT recommended to use with BrdU flow kits, e.g. Cat. No. 559619.

Product Notices

1. This reagent has been pre-diluted for use at the recommended Volume per Test. We typically use 1×10^6 cells in a 100- μ l experimental sample (a test).
2. This antibody has been optimized and preassayed with its matched isotype control to be used at the recommended volume of 20 μ l/test. Titration of the reagents or substituting with other (non-matched) isotype control is NOT recommended.
3. Since applications vary, each investigator should titrate the reagent to obtain optimal results.
4. Please refer to www.bdbiosciences.com/pharmingen/protocols for technical protocols.
5. Caution: Sodium azide yields highly toxic hydrazoic acid under acidic conditions. Dilute azide compounds in running water before discarding to avoid accumulation of potentially explosive deposits in plumbing.
6. Source of all serum proteins is from USDA inspected abattoirs located in the United States.

References

Keren DF, Hanson CA, Hurtubise PE, ed. *Flow Cytometry and Clinical Diagnosis*. Chicago: American Society of Clinical Pathologists Press; 1994:1-676.(Biology)
Dolbear F, Gratzner H, Pallavicini MG, Gray JW. Flow cytometric measurement of total DNA content and incorporated bromodeoxyuridine. *Proc Natl Acad Sci U S A*. 1983; 80(18):5573-5577.(Biology)