

Technical Data Sheet

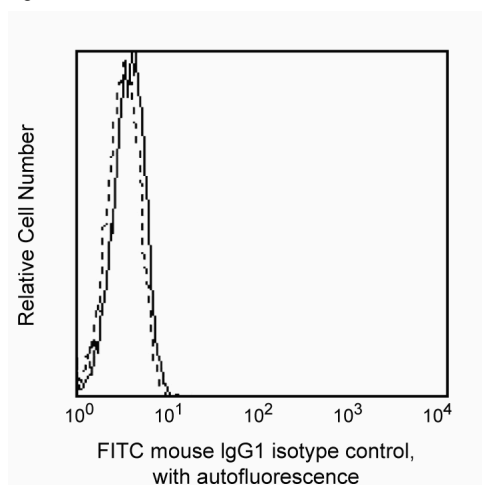
FITC Mouse IgG1, κ Isotype Control**Product Information**

Material Number:	555909
Size:	100 tests
Vol. per Test:	20 µl
Clone:	MOPC-21
Isotype:	Mouse IgG1, κ
Storage Buffer:	Aqueous buffered solution containing BSA and ≤0.09% sodium azide.

Description

The MOPC-21 immunoglobulin is a mouse myeloma protein. The MOPC-21 immunoglobulin was selected as an isotype control following screening for low background on a variety of mouse and human tissues.

This antibody is routinely tested by flow cytometric analysis. Other applications were tested at BD Biosciences Pharmingen during antibody development only or reported in the literature.



Profile of MOLT-4 cells fixed and permeabilized with ethanol and analyzed on a FACScan (BDIS, San Jose, CA)

Preparation and Storage

The monoclonal antibody was purified from tissue culture supernatant or ascites by affinity chromatography.

The antibody was conjugated with FITC under optimum conditions, and unreacted FITC was removed.

Store undiluted at 4°C and protected from prolonged exposure to light. Do not freeze.

Application Notes**Application**

Intracellular staining (flow cytometry)	Routinely Tested
Isotype control	Routinely Tested
Flow cytometry	Tested During Development

Product Notices

1. This reagent has been pre-diluted for use at the recommended Volume per Test. We typically use 1×10^6 cells in a 100-µl experimental sample (a test).
2. Since applications vary, each investigator should titrate the reagent to obtain optimal results.
3. Please refer to www.bdbiosciences.com/pharmingen/protocols for technical protocols.
4. Caution: Sodium azide yields highly toxic hydrazoic acid under acidic conditions. Dilute azide compounds in running water before discarding to avoid accumulation of potentially explosive deposits in plumbing.
5. Source of all serum proteins is from USDA inspected abattoirs located in the United States.
6. For fluorochrome spectra and suitable instrument settings, please refer to our Fluorochrome Web Page at www.bdbiosciences.com/colors.

BD Biosciences

bdbiosciences.com

United States 877.232.8995 Canada 888.259.0187 Europe 32.53.720.550 Japan 0120.8555.90 Asia Pacific 65.6861.0633 Latin America/Caribbean 55.11.5185.9995

For country-specific contact information, visit bdbiosciences.com/how_to_order/

Conditions: The information disclosed herein is not to be construed as a recommendation to use the above product in violation of any patents. BD Biosciences will not be held responsible for patent infringement or other violations that may occur with the use of our products. Purchase does not include or carry any right to resell or transfer this product either as a stand-alone product or as a component of another product. Any use of this product other than the permitted use without the express written authorization of Becton Dickinson and Company is strictly prohibited.

For Research Use Only. Not for use in diagnostic or therapeutic procedures. Not for resale.

BD, BD Logo and all other trademarks are the property of Becton, Dickinson and Company. ©2008 BD

