

Technical Data Sheet

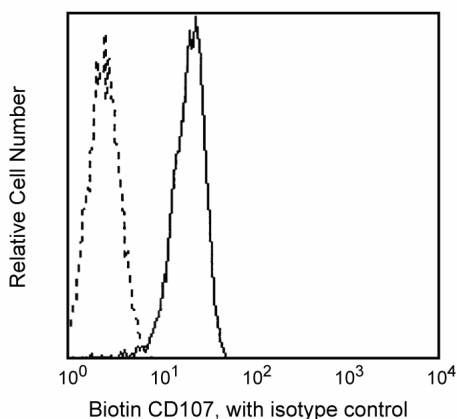
Biotin Mouse Anti-Human CD107a**Product Information**

Material Number:	555799
Alternate Name:	LAMP-1
Size:	100 tests
Vol. per Test:	20 µl
Clone:	H4A3
Isotype:	Mouse IgG1, κ
Reactivity:	QC Testing: Human
Workshop:	V P008
Storage Buffer:	Aqueous buffered solution containing BSA and ≤0.09% sodium azide.

Description

Reacts with the heavily glycosylated 110 kDa lysosomal-associated membrane protein, LAMP-1. LAMP-1 is a widely expressed intracellular antigen. It is also expressed on the surface of activated platelets, PHA-activated lymphocytes and some tumor cell lines, including U937 and KG1a. LAMP-1 has been shown to be a ligand for E-selectin-mediated cell adhesion. LAMP-1 and LAMP-2 (CD107b) are carriers for poly-N-acetyllactosamines, and are able to display sialyl Le^x termini.

This antibody is routinely tested by flow cytometric analysis. Other applications were tested at BD Biosciences Pharmingen during antibody development only or reported in the literature.



Profile of permeabilized jurkat cells analyzed on a FACScan (BDIS, San Jose, CA)

Preparation and Storage

The monoclonal antibody was purified from tissue culture supernatant or ascites by affinity chromatography.

The antibody was conjugated with biotin under optimum conditions, and unreacted biotin was removed.

Store undiluted at 4° C and protected from prolonged exposure to light. Do not freeze.

Application Notes**Application**

Intracellular staining (flow cytometry)	Routinely Tested
---	------------------

Recommended Assay Procedure:

We routinely test this antibody on the fixed and permeabilized Jurkat cells by flow cytometry with Cytofix/Cytoperm (Cat. No. 554714) for fixation and permeabilization.

BD Biosciences

bdbiosciences.com

United States	Canada	Europe	Japan	Asia Pacific	Latin America/Caribbean
877.232.8995	888.259.0187	32.53.720.550	0120.8555.90	65.6861.0633	55.11.5185.9995

For country-specific contact information, visit bdbiosciences.com/how_to_order/

Conditions: The information disclosed herein is not to be construed as a recommendation to use the above product in violation of any patents. BD Biosciences will not be held responsible for patent infringement or other violations that may occur with the use of our products. Purchase does not include or carry any right to resell or transfer this product either as a stand-alone product or as a component of another product. Any use of this product other than the permitted use without the express written authorization of Becton Dickinson and Company is strictly prohibited.

For Research Use Only. Not for use in diagnostic or therapeutic procedures. Not for resale.

BD, BD Logo and all other trademarks are the property of Becton, Dickinson and Company. ©2006 BD

**BD****BD Biosciences**

Suggested Companion Products

Catalog Number	Name	Size	Clone
554714	BD Cytotfix/Cytoperm Fixation/Permeablization Kit	250 tests	(none)
554061	Streptavidin PE	0.5 mg	(none)
555747	Biotin Mouse IgG1 κ Isotype Control	100 tests	MOPC-21

Product Notices

1. This reagent has been pre-diluted for use at the recommended Volume per Test. We typically use 1 X 10⁶ cells in a 100- μ l experimental sample (a test).
2. Since applications vary, each investigator should titrate the reagent to obtain optimal results.
3. Please refer to www.bdbiosciences.com/pharming/en/protocols for technical protocols.
4. Caution: Sodium azide yields highly toxic hydrazoic acid under acidic conditions. Dilute azide compounds in running water before discarding to avoid accumulation of potentially explosive deposits in plumbing.
5. Source of all serum proteins is from USDA inspected abattoirs located in the United States.

References

- Schlossman SF, Boumsell L, Gilks W, et al, ed. *Leukocyte Typing V: White Cell Differentiation Antigens*. New York: Oxford University Press; 1995.(Clone-specific)
- Chen JW, Cha Y, Yuksel KU, Gracy RW, August JT. Isolation and sequencing of a cDNA clone encoding lysosomal membrane glycoprotein mouse LAMP-1. Sequence similarity to proteins bearing onco-differentiation antigens. *J Biol Chem*. 1988; 263(18):8754-8758.(Biology)
- Febbraio M, Silverstein RL. Identification and characterization of LAMP-1 as an activation-dependent platelet surface glycoprotein. *J Biol Chem*. 1990; 265(30):18531-18537.(Biology)
- Guesdon JL, Ternynck T, Avrameas S. The use of avidin-biotin interaction in immunoenzymatic techniques. *J Histochem Cytochem*. 1979; 27(8):1131-1139. (Biology)
- Sawada R, Lowe JB, Fukuda M. E-selectin-dependent adhesion efficiency of colonic carcinoma cells is increased by genetic manipulation of their cell surface lysosomal membrane glycoprotein-1 expression levels. *J Biol Chem*. 1993; 268(17):12675-12681.(Biology)