

Technical Data Sheet

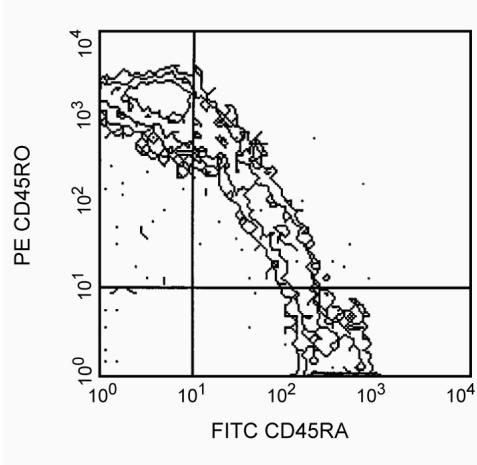
PE Mouse Anti-Human CD45RO

Product Information

| | |
|------------------|---|
| Material Number: | 555493 |
| Size: | 100 tests |
| Vol. per Test: | 20 µl |
| Clone: | UCHL1 |
| Isotype: | Mouse (BALB/c) IgG2a, κ |
| Reactivity: | QC Testing: Human |
| Workshop: | IV N31 |
| Storage Buffer: | Aqueous buffered solution containing BSA and ≤0.09% sodium azide. |

Description

The UCHL1 monoclonal antibody specifically reacts with the 180 kDa isoform of CD45 (aka, the Leukocyte Common Antigen). CD45RO is a type I transmembrane glycoprotein that has cytoplasmic protein tyrosine phosphatase activity and functions in signal transduction pathways. This CD45 isoform does not include amino acid sequences encoded by the variable CD45 exons A, B, or C. CD45RO is expressed on most thymocytes, activated T cells, memory T cells, granulocytes and monocytes, but only on a proportion of resting T cells. CD45RO and CD45RA antibodies seem to define complementary, predominantly non-overlapping, populations in resting peripheral T cells, demonstrating heterogeneity within the CD8 and CD4 subpopulations. CD45RO binds to CD22.



Profile of peripheral lymphocytes analyzed on a FACScan (BDIS, San Jose, CA)

Preparation and Storage

The monoclonal antibody was purified from tissue culture supernatant or ascites by affinity chromatography. The antibody was conjugated with R-PE under optimum conditions, and unconjugated antibody and free PE were removed. Store undiluted at 4°C and protected from prolonged exposure to light. Do not freeze.

Application Notes

Application

| | |
|----------------|------------------|
| Flow cytometry | Routinely Tested |
|----------------|------------------|

Suggested Companion Products

| Catalog Number | Name | Size | Clone |
|----------------|-----------------------------------|-----------|----------|
| 555574 | PE Mouse IgG2a, κ Isotype Control | 100 tests | G155-178 |

Product Notices

- This reagent has been pre-diluted for use at the recommended Volume per Test. We typically use 1×10^6 cells in a 100-µl experimental sample (a test).
- Since applications vary, each investigator should titrate the reagent to obtain optimal results.
- Please refer to www.bdbiosciences.com/pharmingen/protocols for technical protocols.
- For fluorochrome spectra and suitable instrument settings, please refer to our Fluorochrome Web Page at www.bdbiosciences.com/colors.

BD Biosciences

bdbiosciences.com

| | | | | | |
|---------------|--------------|---------------|--------------|--------------|-------------------------|
| United States | Canada | Europe | Japan | Asia Pacific | Latin America/Caribbean |
| 877.232.8995 | 888.268.5430 | 32.53.720.550 | 0120.8555.90 | 65.6861.0633 | 0800.771.7157 |

For country-specific contact information, visit bdbiosciences.com/how_to_order/

Conditions: The information disclosed herein is not to be construed as a recommendation to use the above product in violation of any patents. BD Biosciences will not be held responsible for patent infringement or other violations that may occur with the use of our products. Purchase does not include or carry any right to resell or transfer this product either as a stand-alone product or as a component of another product. Any use of this product other than the permitted use without the express written authorization of Becton Dickinson and Company is strictly prohibited.

For Research Use Only. Not for use in diagnostic or therapeutic procedures. Not for resale.

BD, BD Logo and all other trademarks are the property of Becton, Dickinson and Company. ©2011 BD



5. Caution: Sodium azide yields highly toxic hydrazoic acid under acidic conditions. Dilute azide compounds in running water before discarding to avoid accumulation of potentially explosive deposits in plumbing.
6. Source of all serum proteins is from USDA inspected abattoirs located in the United States.

References

- Barclay NA, Brown MH, Birkeland ML, et al, ed. *The Leukocyte Antigen FactsBook*. San Diego, CA: Academic Press; 1997. (Biology)
- Knapp W, Dorken B, Rieber EP, et al, ed. *Leucocyte Typing IV*. New York: Oxford University Press; 1989:1-1208. (Clone-specific)
- Schlossman SF, Boumsell L, Gilks W, et al, ed. *Leukocyte Typing V: White Cell Differentiation Antigens*. New York: Oxford University Press; 1995. (Biology)
- Smith SH, Brown MH, Rowe D, Callard RE, Beverley PC. Functional subsets of human helper-inducer cells defined by a new monoclonal antibody, UCHL1. *Immunology*. 1986; 58(1):63-70. (Biology)