

Technical Data Sheet

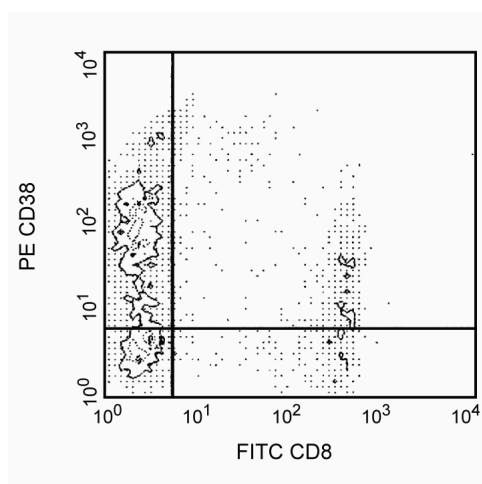
PE Mouse Anti-Human CD38

Product Information

Material Number:	555460
Size:	100 tests
Vol. per Test:	20 µl
Clone:	HIT2
Isotype:	Mouse IgG1, κ
Reactivity:	QC Testing: Human
Workshop:	III 155
Storage Buffer:	Aqueous buffered solution containing BSA and ≤0.09% sodium azide.

Description

The HIT2 monoclonal antibody specifically binds to CD38. CD38 is a 45 kDa type II single-chain transmembrane glycoprotein present on thymocytes, activated T cells and terminally differentiated B cells (plasma cells). Other reactive cells include monocytes, macrophages, dendritic cells and some epithelial cells. The CD38 antigen acts as an ectoenzyme that catalyzes the synthesis and hydrolysis of a Ca⁺⁺ mobilizing agent, cyclic ADP-ribose. This intracellular calcium plays an important role in cell signalling pathways. Reports describe CD38 as participating in adhesion with CD31, immunoregulatory functions involving signal transduction leading to cell growth, apoptosis, and differentiation.



Profile of peripheral blood lymphocytes analyzed on a FACScan (BDIS, San Jose, CA)

Preparation and Storage

The monoclonal antibody was purified from tissue culture supernatant or ascites by affinity chromatography.

The antibody was conjugated with R-PE under optimum conditions, and unconjugated antibody and free PE were removed.

Store undiluted at 4°C and protected from prolonged exposure to light. Do not freeze.

Application Notes

Application

Flow cytometry	Routinely Tested
----------------	------------------

Suggested Companion Products

Catalog Number	Name	Size	Clone
555749	PE Mouse IgG1, κ Isotype Control	100 tests	MOPC-21

Product Notices

1. This reagent has been pre-diluted for use at the recommended Volume per Test. We typically use 1×10^6 cells in a 100-µl experimental sample (a test).
2. Since applications vary, each investigator should titrate the reagent to obtain optimal results.
3. Please refer to www.bdbiosciences.com/pharmingen/protocols for technical protocols.
4. For fluorochrome spectra and suitable instrument settings, please refer to our Fluorochrome Web Page at www.bdbiosciences.com/colors.

BD Biosciences

bdbiosciences.com

United States	Canada	Europe	Japan	Asia Pacific	Latin America/Caribbean
877.232.8995	888.268.5430	32.53.720.550	0120.8555.90	65.6861.0633	0800.771.7157

For country-specific contact information, visit bdbiosciences.com/how_to_order/

Conditions: The information disclosed herein is not to be construed as a recommendation to use the above product in violation of any patents. BD Biosciences will not be held responsible for patent infringement or other violations that may occur with the use of our products. Purchase does not include or carry any right to resell or transfer this product either as a stand-alone product or as a component of another product. Any use of this product other than the permitted use without the express written authorization of Becton Dickinson and Company is strictly prohibited.

For Research Use Only. Not for use in diagnostic or therapeutic procedures. Not for resale.

BD, BD Logo and all other trademarks are the property of Becton, Dickinson and Company. ©2011 BD



5. Caution: Sodium azide yields highly toxic hydrazoic acid under acidic conditions. Dilute azide compounds in running water before discarding to avoid accumulation of potentially explosive deposits in plumbing.
6. Source of all serum proteins is from USDA inspected abattoirs located in the United States.

References

McMichael AJ, Beverly PCL, Gilks W, et al, ed. *Leukocyte Typing III: White Cell Differentiation Antigens*. New York: Oxford University Press; 1987.
(Clone-specific)

Schlossman SF, Boumsell L, Gilks W, et al, ed. *Leukocyte Typing V: White Cell Differentiation Antigens*. New York: Oxford University Press; 1995. (Biology)