

Technical Data Sheet

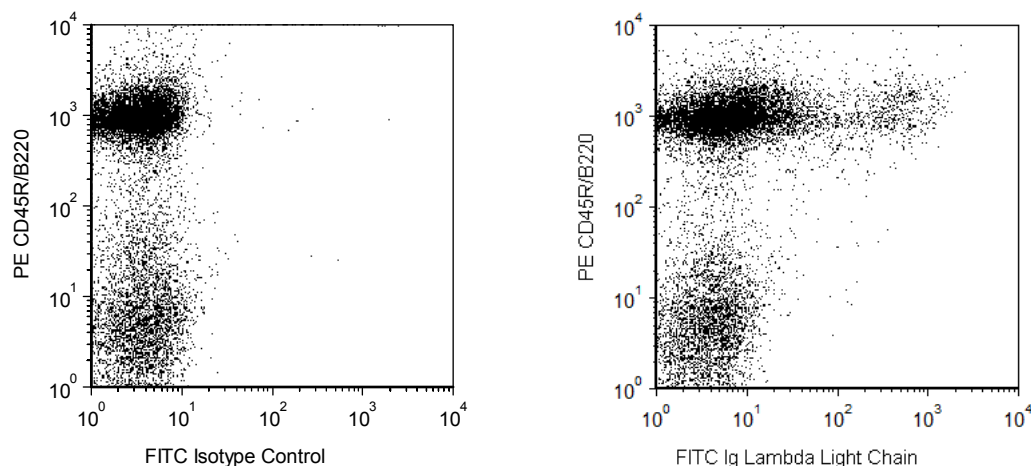
FITC Rat Anti-Mouse Ig, λ 1, λ 2, & λ 3 Light Chain

Product Information

Material Number:	553434
Alternate Name:	Ig λ ; Immunoglobulin lambda chain complex; Ig λ 1/ λ 2/ λ 3
Size:	0.5 mg
Concentration:	0.5 mg/ml
Clone:	R26-46
Immunogen:	Pooled Mouse Ig
Isotype:	Rat IgG2a, κ
Reactivity:	QC Testing: Mouse
Storage Buffer:	Aqueous buffered solution containing \leq 0.09% sodium azide.

Description

The R26-46 antibody reacts specifically with mouse Igs bearing λ 1, λ 2, or λ 3 light chains. It does not react with κ light chain or heavy chain. Detection of surface immunoglobulin on Ig λ chain-secreting hybridoma cells has been demonstrated with R26-46 mAb.



Flow cytometric analysis of Ig, λ 1, λ 2, & λ 3 light chain expression on mouse splenocytes. B6 splenocytes were costained with PE Rat Anti-Mouse CD45R/B220 (Cat. No. 553089/553090/561878), and either FITC Rat Anti-Mouse Ig, λ 1, λ 2, & λ 3 Light Chain (Cat. No. 553434; Right Panel) or FITC Rat IgG2a, κ Isotype Control (Cat. No. 553929; Left Panel). Two-color dot plots were derived from gated events with the side and forward light-scattering characteristics of viable splenocytes. Flow cytometry was performed on a BD FACSCanto™ II system.

Preparation and Storage

The monoclonal antibody was purified from tissue culture supernatant or ascites by affinity chromatography.

The antibody was conjugated with FITC under optimum conditions, and unreacted FITC was removed.

Store undiluted at 4°C and protected from prolonged exposure to light. Do not freeze.

Application Notes

Application

Flow cytometry	Routinely Tested
----------------	------------------

Suggested Companion Products

Catalog Number	Name	Size	Clone
554656	Stain Buffer (FBS)	500 mL	(none)
554657	Stain Buffer (BSA)	500 mL	(none)
561878	PE Rat Anti-Mouse CD45R/B220	25 μ g	RA3-6B2
553089	PE Rat Anti-Mouse CD45R/B220	0.1 mg	RA3-6B2
553090	PE Rat Anti-Mouse CD45R/B220	0.2 mg	RA3-6B2
553929	FITC Rat IgG2a, κ Isotype Control	0.25 mg	R35-95

BD Biosciences

bdbiosciences.com

United States 877.232.8995 Canada 866.979.9408 Europe 32.2.400.98.95 Japan 0120.8555.90 Asia Pacific 65.6861.0633 Latin America/Caribbean 55.11.5185.9995

For country contact information, visit bdbiosciences.com/contact

Conditions: The information disclosed herein is not to be construed as a recommendation to use the above product in violation of any patents. BD Biosciences will not be held responsible for patent infringement or other violations that may occur with the use of our products. Purchase does not include or carry any right to resell or transfer this product either as a stand-alone product or as a component of another product. Any use of this product other than the permitted use without the express written authorization of Becton, Dickinson and Company is strictly prohibited.

For Research Use Only. Not for use in diagnostic or therapeutic procedures. Not for resale.
© 2017 BD. BD, the BD Logo and all other trademarks are property of Becton, Dickinson and Company.



Product Notices

1. Since applications vary, each investigator should titrate the reagent to obtain optimal results.
2. An isotype control should be used at the same concentration as the antibody of interest.
3. Caution: Sodium azide yields highly toxic hydrazoic acid under acidic conditions. Dilute azide compounds in running water before discarding to avoid accumulation of potentially explosive deposits in plumbing.
4. For fluorochrome spectra and suitable instrument settings, please refer to our Multicolor Flow Cytometry web page at www.bdbiosciences.com/colors.
5. Please refer to www.bdbiosciences.com/pharmingen/protocols for technical protocols.

References

Li Y, Li H, Weigert M. Autoreactive B cells in the marginal zone that express dual receptors. *J Exp Med.* 2002; 195(2):181-8. (Clone-specific)
Rolink AG, Winkler T, Melchers F, Andersson J. Precursor B cell receptor-dependent B cell proliferation and differentiation does not require the bone marrow or fetal liver environment. *J Exp Med.* 2000; 191(1):23-32. (Clone-specific)