

Technical Data Sheet

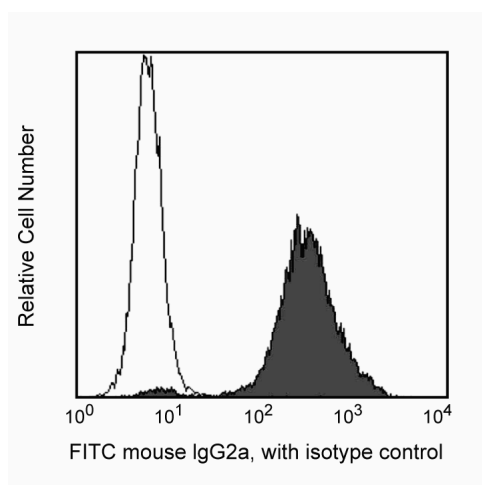
FITC Anti-Mouse IgG2a

Product Information

Material Number:	553390
Size:	0.5 mg
Concentration:	0.5 mg/ml
Clone:	R19-15
Immunogen:	Pooled BALB/c and C57BL/6 mouse Ig
Isotype:	Rat (LOU) IgG1, κ
Reactivity:	QC Testing: Mouse
Storage Buffer:	Aqueous buffered solution containing $\leq 0.09\%$ sodium azide.

Description

The R19-15 antibody recognizes an epitope in the CH3 domain of mouse IgG2a, with strong reactivity to the *Igh-I[a]* allotype and weaker reactivity to *Igh-I[b]*. It does not react with other Ig isotypes. Molecular genetic analyses suggest that the *Igh-I[b]* allele, which encodes *IgG2a[b]*, is derived from a locus found in several wild mouse subspecies, but not domestic mice, which encodes the IgG2c isotype.



Detection of intracellular mouse IgG2a in an antibody-secreting hybridoma cell line. Cells were fixed, permeabilized, and stained with either the FITC anti-Mouse IgG2a mAb (Clone R19-15, filled histogram) or the matched FITC Rat IgG1, κ Isotype Control (Open histogram, Cat. No. 554684/553924). Flow cytometry was performed on a BD FACSCalibur™ flow cytometry system.

Preparation and Storage

Store undiluted at 4°C and protected from prolonged exposure to light. Do not freeze.

The monoclonal antibody was purified from tissue culture supernatant or ascites by affinity chromatography.

The antibody was conjugated with FITC under optimum conditions, and unreacted FITC was removed.

Application Notes

Application

Flow cytometry	Routinely Tested
Intracellular staining (flow cytometry)	Tested During Development

Recommended Assay Procedure:

R19-15 antibody is effective for detection of cell-surface or intracellular Ig by immunofluorescent staining with flow cytometric analysis.

FITC-conjugated R19-15 mAb may be used as a primary or secondary reagent in immunofluorescent staining.

Suggested Companion Products

Catalog Number	Name	Size	Clone
553924	FITC Rat IgG1, κ Isotype Control	0.25 mg	R3-34
554656	Stain Buffer (FBS)	500 ml	(none)

BD Biosciences

bdbiosciences.com

United States	Canada	Europe	Japan	Asia Pacific	Latin America/Caribbean
877.232.8995	800.979.9408	32.53.720.550	0120.8555.90	65.6861.0633	55.11.5185.9995

For country contact information, visit bdbiosciences.com/contact

Conditions: The information disclosed herein is not to be construed as a recommendation to use the above product in violation of any patents. BD Biosciences will not be held responsible for patent infringement or other violations that may occur with the use of our products. Purchase does not include or carry any right to resell or transfer this product either as a stand-alone product or as a component of another product. Any use of this product other than the permitted use without the express written authorization of Becton, Dickinson and Company is strictly prohibited.

For Research Use Only. Not for use in diagnostic or therapeutic procedures. Not for resale.

Unless otherwise noted, BD, BD Logo and all other trademarks are property of Becton, Dickinson and Company. © 2011 BD



Product Notices

1. Since applications vary, each investigator should titrate the reagent to obtain optimal results.
2. Please refer to www.bdbiosciences.com/pharming/en/protocols for technical protocols.
3. Caution: Sodium azide yields highly toxic hydrazoic acid under acidic conditions. Dilute azide compounds in running water before discarding to avoid accumulation of potentially explosive deposits in plumbing.
4. An isotype control should be used at the same concentration as the antibody of interest.
5. For fluorochrome spectra and suitable instrument settings, please refer to our Multicolor Flow Cytometry web page at www.bdbiosciences.com/colors.

References

Martin RM, Silva A, Lew AM. The Igh-1 sequence of the non-obese diabetic (NOD) mouse assigns it to the IgG2c isotype. *Immunogenetics*. 1997; 46(2):167-168. (Biology)

Morgado MG, Cam P, Gris-Liebe C, Cazenave PA, Jouvin-Marche E. Further evidence that BALB/c and C57BL/6 gamma 2a genes originate from two distinct isotypes. *EMBO J*. 1989; 8(11):3245-3251. (Biology)

BD Biosciences

bdbiosciences.com

United States	Canada	Europe	Japan	Asia Pacific	Latin America/Caribbean
877.232.8995	800.979.9408	32.53.720.550	0120.8555.90	65.6861.0633	55.11.5185.9995

For country contact information, visit bdbiosciences.com/contact

Conditions: The information disclosed herein is not to be construed as a recommendation to use the above product in violation of any patents. BD Biosciences will not be held responsible for patent infringement or other violations that may occur with the use of our products. Purchase does not include or carry any right to resell or transfer this product either as a stand-alone product or as a component of another product. Any use of this product other than the permitted use without the express written authorization of Becton, Dickinson and Company is strictly prohibited.

For Research Use Only. Not for use in diagnostic or therapeutic procedures. Not for resale.

Unless otherwise noted, BD, BD Logo and all other trademarks are property of Becton, Dickinson and Company. © 2011 BD

