

Human and Mouse Naïve/Memory T-Cell Panels

Features

Flexible panels of the most commonly used markers for the identification of naïve and memory T cells

Formats and concentration optimized for each specificity to work as a combined panel

Human panel contains CD3, CD4, CD45RA, and CD197 (CCR7) in four vials conveniently bottled at 5 μ L per test with the PE channel open

Mouse panel contains CD3, CD4, CD44, and CD62L with the FITC channel open

Basic panels are compatible with dual-laser flow cytometers such as the BD FACSCalibur™

Optimized reagent panels for the measurement of naïve, memory, and effector T-cell populations

The ability of the immune system to respond with greater intensity upon re-exposure to antigen forms the basis of immunological memory. The understanding of immunologic memory is important for the study of vaccine development, infectious disease, and immune reconstitution. BD offers convenient optimized panels of the essential markers for the study of T cell memory for human and mouse. The panels are compatible with various markers to provide a convenient and consistent base for studies of T-cell memory.

Markers for the study of naïve, memory, and effector T-cell populations

The relative number of different T-cell subsets, activation markers, and growth factors can provide a useful measurement of immune response to antigen. Different subsets are defined by patterns of cytokine production and cell surface marker expression, some of which are summarized in table 1. Several markers have been described as useful for the identification of T cell subsets.^{1,2,3} Memory T cells form a heterogeneous group of long-lived cells which are characterized phenotypically by high expression levels of CD45RO in humans and CD44 in mice. Both in humans and mice, most typical memory cells are resting cells and comprise a mixture of “central” and “effector” cells. Central memory cells retain the lymph node (LN)-homing receptors CCR7 and CD62L (L-selectin) on naïve T cells and, like the latter, recirculate through spleen and LN. Effector memory cells, on the other hand, downregulate CD62L and express a diverse set of homing receptors, which enables the cells to pass through non-lymphoid tissues. Some effector memory cells are in an activated state and are common in chronic viral infections.⁴⁻⁷

Visit bdbiosciences.com/tcell for more information.

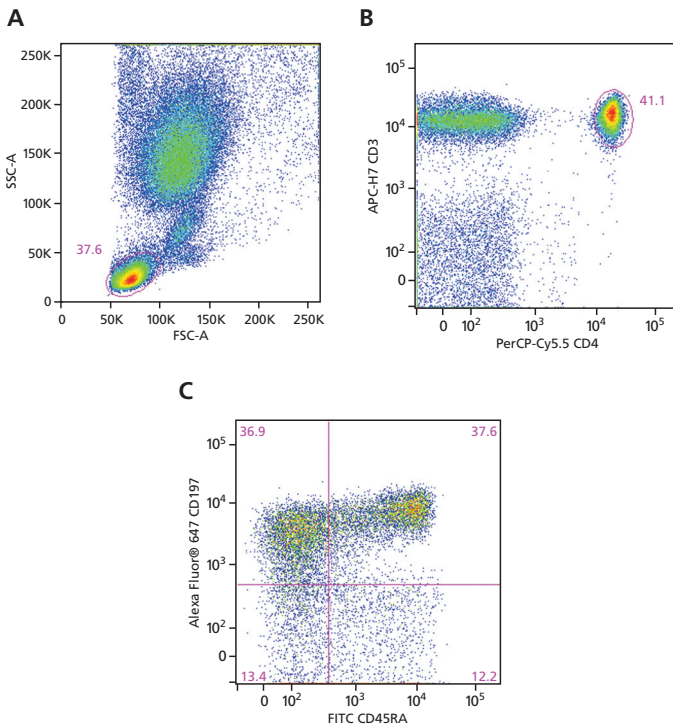


Figure 1. Multicolor staining and flow cytometric analysis of peripheral blood naïve and memory CD4⁺ T cells on a BD FACSCanto™ II flow cytometer.

Whole blood was stained with a combination of PerCP-Cy™5.5 mouse anti-Human CD4, FITC mouse anti-Human CD45RA, Alexa Fluor® 647 mouse anti-Human CD197 (CCR7), and APC-H7 mouse anti-Human CD3 antibody. Red blood cells were then lysed using BD PharmLyse™ lysing buffer (Cat. No. 555899) and the leucocytes were analyzed. Bivariate dot plots showing the correlated expression patterns of CD45RA vs CD197 (plot C) were derived from gated events with the light-scattering characteristics of viable CD4⁺CD3⁺ T lymphocytes (plot B) which were generated by flow cytometric analysis. Quadrants for the dot plots were derived using fluorescence-minus-one (FMO) controls.

Human and Mouse Naïve/Memory T-Cell Panels

Table 1. Common markers for the study of T-cell memory.

Specificity	Function	Utility	Panel(s)
CD3	Part of the T-cell receptor complex	T-cell lineage marker	Human and Mouse
CD4	Initiates or augments the early phase of T-cell activation	T helper cell lineage marker	Human and Mouse
CD8	T-cell mediated killing	T effector cell lineage marker	–
CD11a	Involved in leucocyte interactions	Levels increase with antigen experience	–
CD14	Mediates the innate immune response to lipopolysaccharides	Macrophage marker (eliminates contaminating cells)	–
CD19	Assembles the antigen receptor of B lymphocytes	B-cell marker (eliminates contaminating cells)	–
CD25	Identification of regulatory T cells	Treg marker	–
CD27	Important for the generation and maintenance of immune response. ⁴	Levels decrease upon antigen experience	–
CD28	T-cell activation	Levels decrease upon antigen experience	–
CD44	Promotes effector T cell survival ⁵	Memory marker. In mouse levels are increased in memory and effector T cells	Mouse

Specificity	Function	Utility	Panel(s)
CD45RA	Regulator of T-cell antigen signaling	Memory marker. Levels increase with antigen experience.	Human
CD45RO	Regulator of T-cell antigen signaling	Memory marker	–
CD57	Cell adhesion	Terminal differentiation marker.	–
CD62L	Cell adhesion/trafficking to lymph nodes	Memory marker. Levels increase in memory T cells	Mouse
CD69	T-cell activation marker	T-cell activation marker	–
CD122	Subunit of the IL-2 receptor	Possible memory cell marker ³	–
CD127	IL-7 receptor	Useful for the negative selection of Tregs	–
CD197 (CCR7)	Homing receptor	Levels decrease with antigen experience	Human
IFN- γ	Immunomodulatory cytokine	Access immune function	–
IL-2	Cytokine important for the expansion of CD4 and CD8 T cells	Access immune function	–
TNF	Proinflammatory cytokine	Access immune function	–

Ordering Information

Description	Clone	Isotype	Format	Size	Cat.No.
Human Naïve/Memory T Cell Panel Containing the following Anti-Human Reagents				50 tests	561438
CD3	SK7	Mouse IgG ₁ κ	APC-H7		
CD4	SK3	Mouse IgG ₁ κ	PerCP-Cy5.5		
CD45RA	HI100	Mouse IgG _{2b} κ	FITC		
CD197 (CCR7)	150503	Mouse IgG _{2a} κ	Alexa Fluor® 647		
Mouse Naïve/Memory T Cell Panel Containing the following Anti-Mouse Reagents				50 tests	561609
CD3 Molecular Complex	17A2	Rat IgG _{2b} κ	APC-Cy TM 7		
CD4	RM4-5	Rat IgG _{2a} κ	PerCP-Cy5.5		
CD44	IM7	Rat IgG _{2b} κ	PE		
CD62L	MEL-14	Rat IgG _{2a} κ	APC		

References

- Appay V, van Lier RA, Sallusto F, Roederer M. Phenotype and function of human T lymphocyte subsets: consensus and issues. *Cytometry A*. 2008;73:975-983.
- Mahnke YD, Roederer M. OMIP-001: Quality and phenotype of Ag-responsive human T-cells. *Cytometry A*. 2010;77:819-820.
- Seder RA, Darrah PA, Roederer M. T-cell quality in memory and protection: implications for vaccine design. *Nat Rev Immunol*. 2008;8:247-258. Epub 2008. Review. Erratum in: *Nat Rev Immunol*. 2008;8:486.
- Xiao Y, Peperzak V, Keller AM, Borst J. CD27 instructs CD4+ T cells to provide help for the memory CD8+ T cell response after protein immunization. *J Immunol*. 2008;181:1071-1082.
- Baaten BJ, Li CR, Deiro MF, Lin MM, Linton PJ, Bradley LM. CD44 regulates survival and memory development in Th1 cells. *Immunity*. 2010;32:104-115.
- Suzuki H, Shi Z, Okuno Y, Isobe K. Are CD8+CD122+ cells regulatory T cells or memory T cells? *Hum Immunol*. 2008;69:751-754.
- Boyman O, Létourneau S, Krieg C, Sprent J. Homeostatic proliferation and survival of naïve and memory T cells. *Eur J Immunology*, 2009;39:2088–2094.



BD flow cytometers are Class I (1) laser products.

For Research Use Only. Not for use in diagnostic or therapeutic procedures.

Alexa Fluor® is a registered trademark of Molecular Probes, Inc.

CyTM is a trademark of Amersham Biosciences Corp. Cy dyes are subject to proprietary rights of Amersham Biosciences Corp and Carnegie Mellon University and are made and sold under license from Amersham Biosciences Corp only for research and in vitro diagnostic use. Any other use requires a commercial sublicense from Amersham Biosciences Corp, 800 Centennial Avenue, Piscataway, NJ 08855-1327, USA.

BD, BD Logo and all other trademarks are property of Becton, Dickinson and Company. © 2011 BD
23-13010-00

BD Biosciences

2350 Qume Drive
San Jose, CA 95131
US Orders: 877.232.8995
answers@bd.com
bdbiosciences.com