

Monoclonal Antibodies Detecting Human Antigens



CD10 (HI10a)

Form	Catalog number
FITC	340925
PE	340921
PE-Cy7	341092
APC	340923
APC-H7	655404
APC-R700	659120

Product availability varies by region. Contact BD Biosciences Customer Support or your local sales representative for information.

RESEARCH APPLICATIONS

Research applications include:

- Characterization of non-T (common) acute lymphoblastic leukemias^{1,2}
- Analysis of early stages of hematopoietic differentiation³⁻⁵
- Analysis of neutrophil chemotaxis⁶⁻⁸

DESCRIPTION

Specificity

The CD10 antibody recognizes a 100-kilodalton (kDa) type II transmembrane, glycosylated, zinc-containing metalloprotease.^{9,10} The CD10 antigen is also known as common acute lymphoblastic leukemia antigen (CALLA), neutral endopeptidase (NEP), gp100, and enkephalinase.¹¹

Antigen distribution

The CD10 antigen is found on lymphocytes from samples with acute B-lymphoid leukemia.¹² The CD10 antigen is also present on a wide variety of normal and neoplastic cell types including renal epithelium, fibroblasts, granulocytes, germinal center B lymphocytes,¹³ neutrophils,^{6,7,14} some T-cell leukemias,¹⁵ and some lymphoma, melanoma, and glioma cell lines.¹¹

The CD10 antigen cleaves a number of biologically active peptides,¹⁶ including fMLP, and may modulate the chemotactic activity of fMLP towards neutrophils.⁸ Inhibition of the CD10 antigen promotes B-cell maturation,¹⁷ suggesting that it plays a role in B-cell development.

Clone

The CD10 antibody, clone HI10a,¹⁰ is derived from the hybridization of P3-63-Ag8.653 mouse myeloma cells with spleen cells isolated from BALB/c mice immunized with blasts from a patient with acute CALLA leukemia.

Composition

The CD10 antibody is composed of mouse IgG₁ heavy chains and kappa light chains.

Product configuration

The following are supplied in phosphate buffered saline (PBS) containing a stabilizer and a preservative.

Form	Number of tests	Volume per test (µL) ^a	Amount provided (µg)	Total volume (mL)	Concentration (µg/mL)	Stabilizer	Preservative
FITC	50	20	12.5	1	12.5	Gelatin	0.1% Sodium azide
PE	50	20	6	1	6	Gelatin	0.1% Sodium azide
PE-Cy TM 7	100	5	12.5	0.5	25	Gelatin	0.1% Sodium azide
APC	100	5	12.5	0.5	25	Gelatin	0.1% Sodium azide

For Research Use Only. Not for use in diagnostic or therapeutic procedures.

Becton, Dickinson and Company
BD Biosciences
2350 Qume Drive
San Jose, CA 95131 USA



Form	Number of tests	Volume per test (µL) ^a	Amount provided (µg)	Total volume (mL)	Concentration (µg/mL)	Stabilizer	Preservative
APC-H7	100	5	2.5	0.5	50	BSA	ProClin® 300
APC-R700 ^b	100	5	6.25	0.5	12.5	BSA	ProClin 300

a. Volume required to stain 10⁶ cells.

b. BD Horizon™ APC-R700

CAUTION Some PE-Cy7, APC-H7, and APC-R700 conjugates show changes in their emission spectra with prolonged exposure to paraformaldehyde or light. For overnight storage of stained cells, wash and resuspend in buffer without paraformaldehyde after 1 hour of fixation.

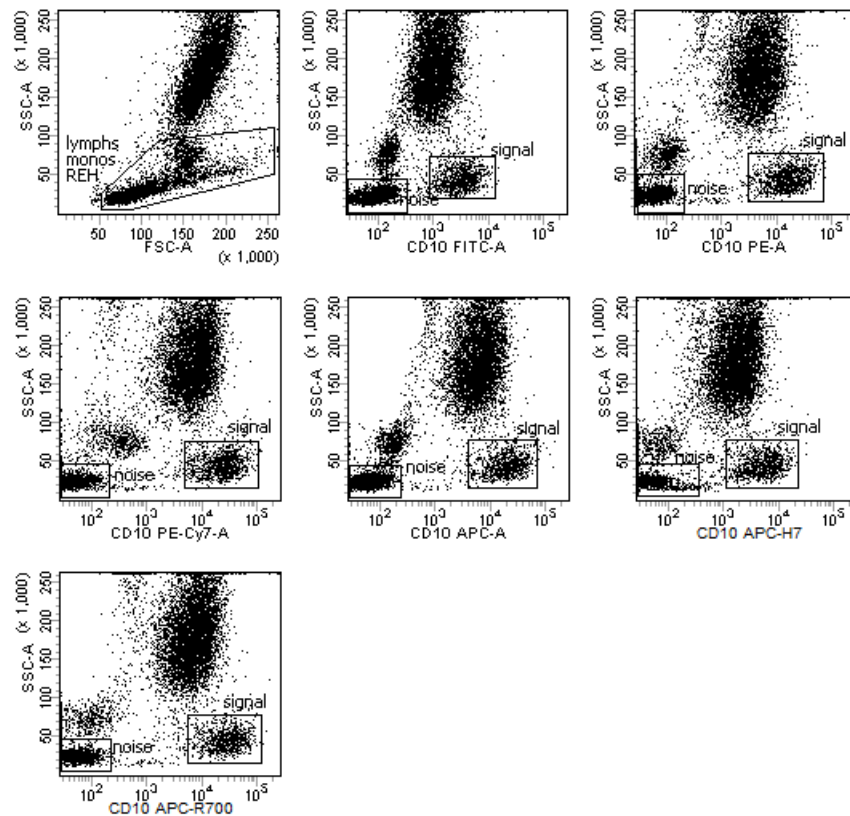
PROCEDURE

Visit our website (bdbiosciences.com) or contact your local BD representative for the lyse/wash protocol for direct immunofluorescence.

REPRESENTATIVE DATA

Flow cytometric analysis was performed on 10⁶ REH cells added per mL of whole blood stained with the indicated conjugated antibody and gated on lymphocytes, monocytes, and REH cells. Laser excitation was at 488 nm, 635 nm, or 640 nm.

The APC-R700 conjugate is read off the red laser (640 nm) using a 685 longpass mirror with a 712/21 bandpass filter. Representative data analyzed with a BD FACSTM brand flow cytometer is shown in the following plots.



HANDLING AND STORAGE

Store vials at 2°C–8°C. Conjugated forms should not be frozen. Protect from exposure to light. Each reagent is stable until the expiration date shown on the bottle label when stored as directed.

WARNING

All biological specimens and materials coming in contact with them are considered biohazards. Handle as if capable of transmitting infection^{18,19} and dispose of with proper precautions in accordance with federal, state, and local regulations. Never pipette by mouth. Wear suitable protective clothing and gloves.

Some reagents are bottled with ProClin 300, and contain 0.003% of a mixture of CMIT/MIT (3:1), CAS number 55965-84-9.



Warning

H317 May cause an allergic skin reaction.

Wear protective gloves/eye protection. Wear protective clothing. Avoid breathing mist/vapours/spray. If skin irritation or rash occurs: Get medical advice/attention. IF ON SKIN: Wash with plenty of water. Dispose of contents/container in accordance with local/regional/national/international regulations.

CHARACTERIZATION

To ensure consistently high-quality reagents, each lot of antibody is tested for conformance with characteristics of a standard reagent. Representative flow cytometric data is included in this data sheet.

WARRANTY

Unless otherwise indicated in any applicable BD general conditions of sale for non-US customers, the following warranty applies to the purchase of these products.

THE PRODUCTS SOLD HEREUNDER ARE WARRANTED ONLY TO CONFORM TO THE QUANTITY AND CONTENTS STATED ON THE LABEL OR IN THE PRODUCT LABELING AT THE TIME OF DELIVERY TO THE CUSTOMER. BD DISCLAIMS HEREBY ALL OTHER WARRANTIES, EXPRESSED OR IMPLIED, INCLUDING WARRANTIES OF MERCHANTABILITY AND FITNESS FOR ANY PARTICULAR PURPOSE AND NONINFRINGEMENT. BD'S SOLE LIABILITY IS LIMITED TO EITHER REPLACEMENT OF THE PRODUCTS OR REFUND OF THE PURCHASE PRICE. BD IS NOT LIABLE FOR PROPERTY DAMAGE OR ANY INCIDENTAL OR CONSEQUENTIAL DAMAGES, INCLUDING PERSONAL INJURY, OR ECONOMIC LOSS, CAUSED BY THE PRODUCT.

REFERENCES

1. Hann IM, Richards SM, Eden OB, Hill FGH. Analysis of the immunophenotype of children treated on the Medical Research Council United Kingdom Acute Lymphoblastic Leukaemia Trial XI (MRC UKALLXI). *Leukemia*. 1998;12:1249-1255.
2. Nadler LM, Korsmeyer SJ, Anderson KC, et al. B cell origin of non-T cell acute lymphoblastic leukemia: a model for discrete stages of neoplastic and normal pre-B cell differentiation. *J Clin Invest*. 1984;74:332-340.
3. Dworzak MN, Fritsch G, Fleischer C, et al. Multiparameter phenotype mapping of normal and post-chemotherapy B lymphopoiesis in pediatric bone marrow. *Leukemia*. 1997;11:1266-1273.
4. Dworzak MN, Fritsch G, Fröschl G, Printz D, Gadner H. Four-color flow cytometric investigation of terminal deoxynucleotidyl transferase-positive lymphoid precursors in pediatric bone marrow: CD79a expression precedes CD19 in early B-cell ontogeny. *Blood*. 1998;92:3203-3209.
5. Loken MR, Shah VO, Dattilio KL, Civin CI. Flow cytometric analysis of human bone marrow. II. Normal B-lymphocyte development. *Blood*. 1987;70:1316-1324.
6. Connelly JC, Skidgel RA, Schulz WW, Johnson AR, Erdos EG. Neutral endopeptidase 24.11 in human neutrophils: cleavage of chemotactic peptide. *Proc Natl Acad Sci USA*. 1985;82:8737-8741.
7. Erdös EG, Wagner B, Harbury CB, Painter RG, Skidgel RA, Fa XG. Down-regulation and inactivation of neutral endopeptidase 24.11 (enkephalinase) in human neutrophils. *J Biol Chem*. 1989;264:14519-14523.
8. Hofman P, Selva E, Le Negrate G, et al. CD10 inhibitors increase f-Met-Leu-Phe-induced neutrophil transmigration. *J Leukoc Biol*. 1998;63:312-320.
9. Greaves MF. Monoclonal antibodies as probes for leukemic heterogeneity and hematopoietic differentiation. In: Knapp W, ed. *Leukemia Markers*. New York, NY: Academic Press; 1981:19.
10. Zola H. CD10 Workshop Panel report. In: Schlossman SF, Boumsell L, Gilks W, et al, eds. *Leucocyte Typing V: White Cell Differentiation Antigens*. Vol 1. New York, NY: Oxford University Press; 1995:505-507.
11. Letarte M, Vera S, Tran R, et al. Common acute lymphocytic leukemia antigen is identical to neutral endopeptidase. *J Exp Med*. 1988;168:1247-1253.

12. LeBien TW, McCormack RT. The common acute lymphoblastic leukemia antigen (CD10)—emancipation from a functional enigma. *Blood*. 1989;73:625-635.
13. Caligaris-Cappio F, Riva M, Tesio L, Schena M, Gaidano G, Bergui L. Human normal CD5⁺ B lymphocytes can be induced to differentiate to CD5⁻ B lymphocytes with germinal center cell features. *Blood*. 1989;73:1259-1263.
14. Connelly JC, Chambless R, Holiday D, Chittenden K, Johnson AR. Up-regulation of neutral endopeptidase (CALLA) in human neutrophils by granulocyte-macrophage colony-stimulating factor. *J Leukoc Biol*. 1993;53:685-690.
15. Consolini R, Legitimo A, Rondelli R, et al. Clinical relevance of CD10 expression in childhood ALL. *Haematologica*. 1998;83:967-973.
16. Erdös EG, Skidgel RA. Neutral endopeptidase 24.11 (enkephalinase) and related regulators of peptide hormones. *FASEB J*. 1989;3:145-151.
17. Salles G, Rodewald HR, Chin BS, Reinherz EL, Shipp MA. Inhibition of CD10/neutral endopeptidase 24.11 promotes B-cell reconstitution and maturation in vivo. *Proc Natl Acad Sci USA*. 1993;90:7618-7622.
18. *Protection of Laboratory Workers from Occupationally Acquired Infections; Approved Guideline — Third Edition*. Wayne, PA: Clinical and Laboratory Standards Institute; 2005. CLSI document M29-A3.
19. Centers for Disease Control. Perspectives in disease prevention and health promotion update: universal precautions for prevention of transmission of human immunodeficiency virus, hepatitis B virus, and other bloodborne pathogens in health-care settings. *MMWR*. 1988;37:377-388.

PATENTS AND TRADEMARKS

Cy™ is a trademark of GE Healthcare. This product is subject to proprietary rights of GE Healthcare and Carnegie Mellon University, and is made and sold under license from GE Healthcare. This product is licensed for sale only for research. It is not licensed for any other use. If you require a commercial license to use this product and do not have one, return this material, unopened, to BD Biosciences, 2350 Qume Drive, San Jose, CA 95131, and any money paid for the material will be refunded.

ProClin is a registered trademark of Rohm and Haas Company.

BD, BD Logo and all other trademarks are property of Becton, Dickinson and Company. © 2015 BD