

Technical Data Sheet

DimerX I: Recombinant Soluble Dimeric Mouse H-2D[b]:Ig

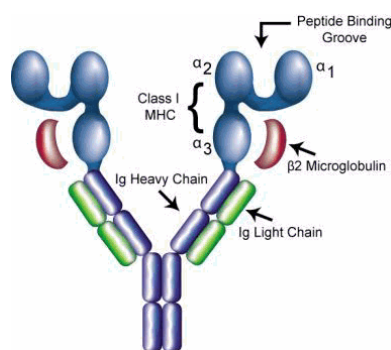
Product Information

Material Number:	551323
Size:	0.25 mg
Concentration:	0.5 mg/ml
Clone:	DimerX/H-2Db
Isotype:	Mouse IgG1, λ
Storage Buffer:	Aqueous buffered solution containing $\leq 0.09\%$ sodium azide.

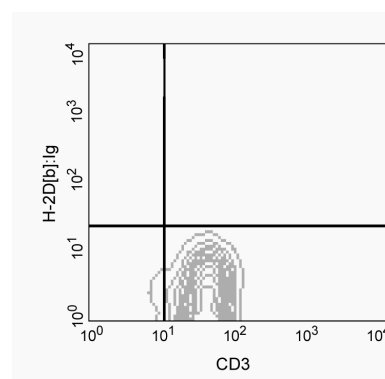
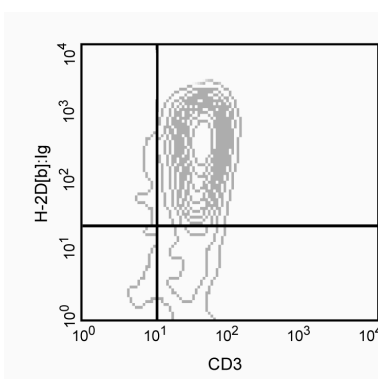
Description

The H-2D[b]:Ig fusion protein consists of three extracellular major histocompatibility complex (MHC) class I H-2D[b] domains that are fused to the VH regions of mouse IgG1 (see Figure 1). In order for the MHC class I to be functional, ie, capable of binding peptides, $\beta 2$ Microglobulin ($\beta 2$ M) must be present. For this reason, BD™ DimerX consists of recombinant H-2D[b]:Ig fusion protein, supplemented with recombinant $\beta 2$ M. Recombinant MHC molecules, like the DimerX fusion protein, are useful for studying T-cell function by immunofluorescent staining and flow cytometric analysis of antigen-specific T cells.

The MHC gene locus encodes a group of highly polymorphic, cell-surface proteins that play a broad role in the immune response to protein antigens. MHC molecules function by binding and presenting small antigenic protein fragments to antigen-specific receptors expressed by T cells (TCR). Human (*human leukocyte antigen/HLA*) and mouse (*histocompatibility 2/H-2*) MHC molecules are structurally and functionally related proteins that comprise two major classes. Class I MHC molecules consist of two separate polypeptide chains. The class I α chain is an MHC encoded, transmembrane polypeptide containing three extracellular domains: $\alpha 1$, $\alpha 2$, and $\alpha 3$. The second chain consists of a non-MHC encoded polypeptide called $\beta 2$ M. Since $\beta 2$ M does not contain a transmembrane domain, it associates with the α chain through noncovalent interaction. Functionally, class I MHC molecules can bind peptides derived from intracellular antigens (eg, viral and some bacterial antigens) that are specifically recognized by CD8+ T cells. Class II MHC molecules consist of two different transmembrane proteins that can bind peptide fragments derived from extracellular proteins (eg, bacteria and fungi) and are specifically recognized by CD4+ T cells. TCR recognize both processed peptides bound to MHC, as well as regions of the MHC molecule itself. CD4 and CD8 accessory molecules strengthen formation of the TCR-MHC complex through their interaction with non-polymorphic regions of the MHC molecule.



Schematic representation of the MHC class I:Ig dimeric protein.



Flow cytometric analysis of a T-cell hybridoma using DimerX I H-2Db:Ig. Mouse DimerX I H-2Db:Ig was incubated with a 160-molar excess of a specific peptide MOG 44-54 (FSRVVHLYRNG, Panel A) or irrelevant peptide Influenza A34 NP 366-374 (ASNNMETM, Panel B) at 37°C overnight. Peptide-loaded H-2Db:Ig was then used for the immunofluorescent staining of MOG TH10 hybridoma cells, along with FITC conjugated anti-mouse CD3e mAb 145-2C11 (Cat. no. 553061/553062) followed by PE-conjugated anti-mouse IgG1 mAb A85-1 (Cat. no. 550083). Flow cytometry was performed on a BD FACSCalibur™ flow cytometry system.

Preparation and Storage

Store undiluted at 4°C.

BD Biosciences

bdbiosciences.com

United States	Canada	Europe	Japan	Asia Pacific	Latin America/Caribbean
877.232.8995	800.979.9408	32.53.720.550	0120.8555.90	65.6861.0633	55.11.5185.9995

For country contact information, visit bdbiosciences.com/contact

Conditions: The information disclosed herein is not to be construed as a recommendation to use the above product in violation of any patents. BD Biosciences will not be held responsible for patent infringement or other violations that may occur with the use of our products. Purchase does not include or carry any right to resell or transfer this product either as a stand-alone product or as a component of another product. Any use of this product other than the permitted use without the express written authorization of Becton, Dickinson and Company is strictly prohibited.

For Research Use Only. Not for use in diagnostic or therapeutic procedures. Not for resale.

Unless otherwise noted, BD, BD Logo and all other trademarks are property of Becton, Dickinson and Company. © 2011 BD

The H-2D[b] protein was expressed together with human β 2M in the mouse plasmacytoma cell line, J558L (ATCC TIB-6). The H-2D[b] and β 2M polypeptide chains are associated noncovalently as a consequence of their coexpression within J558L cells. The H-2D[b]:Ig fusion protein was purified from tissue culture supernatant by affinity chromatography. The purity of the preparation was confirmed by SDS-PAGE.

Application Notes

Application

Flow cytometry	Routinely Tested
----------------	------------------

Recommended Assay Procedure:

This H-2D[b]:Ig fusion protein has been tested by immunofluorescent staining ($\leq 4 \mu\text{g}$ H-2D[b]:Ig/million cells) (see Figure 2) and flow cytometric analysis of antigen-specific T cells to assure specificity and reactivity. It is necessary to load the H-2D[b] portions of the dimeric protein with a relevant peptide of interest prior to immunofluorescent staining of T cells. H-2D[b]:Ig complexes are effectively loaded by incubation with excess relevant (specific) or irrelevant (control) peptides (see Protocol 1). Peptide-loaded H-2D[b]:Ig may be used for immunofluorescent staining (see Protocol 2). Since applications vary, each investigator must determine dilutions appropriate for individual use.

Protocol 1: Peptide Loading of H-2D[b]:Ig Dimeric Protein

Several peptide-loading protocols have been described. The method used at BD Biosciences Pharmingen involves passive loading of excess peptide in solution with H-2D[b]:Ig protein. We have found that passive loading works particularly well in the case of high-affinity peptides. For lower-affinity peptides, an increase in the molar ratio of peptide to H-2D[b]:Ig may improve loading, as determined by flow cytometric analysis. It is suggested that for each peptide, parameters such as the dose of H-2D[b]:Ig per million cells, molar ratio of peptide to H-2D[b]:Ig, and peptide loading time be determined empirically by the investigator. Parameters for peptide binding to H-2D[b] have been reported, including those peptides routinely used at BD Biosciences Pharmingen for evaluation of H-2D[b]:Ig. While this DimerX product contains β 2 Microglobulin, for investigators requiring excess recombinant Human β 2 Microglobulin, we recommend BD Biosciences Cat. no. 551089.

Peptide preparation and loading:

1. The molecular weight (MW) of a peptide of interest will need to be determined. A peptide's MW can be estimated by multiplying its number (n) of amino acids (AA) by 130 daltons (d) per amino acid:

$$\text{MW of peptide (d)} = n (\text{AA}) \times 130 (\text{d/AA})$$

2. A stock of peptide may be prepared at 20 mg/ml in DMSO. Dilute the peptide solution to 2 mg/ml in sterile DPBS, pH 7.2 for use in the H-2D[b]:Ig loading protocol.
3. Mix H-2D[b]:Ig protein with specific or control peptide at 40, 160, or 640 molar (M) excess.

The following calculation, using an 8 amino acid peptide (8mer) as an example, may be used:

Dp = Molecular Weight of peptide: eg, 8 amino acids \times 130 = 1,040 daltons.

DDb = Molecular Weight of H-2Db:Ig = 250,000 daltons.

R = desired excess molar ratio, eg, 160.

Mp = micrograms (μg) peptide of interest.

MDb = micrograms (μg) H-2D b:Ig in the reaction. A typical amount of peptide-loaded H-2Db:Ig to use for flow cytometry staining is 0.25 to 4 μg /million cells (test).

$$\text{Mp} = \text{MDb} \times \text{R} \times \text{Dp} \div \text{DDb} = 4 \mu\text{g} \times 160 \times 1,040 \text{ d} \div 250,000 \text{ d} = 2.66 \mu\text{g}$$

Therefore, one would add 2.66 μg of peptide and 4 μg of H-2D[b] :Ig in solution for the optimal peptide loading of H-2D[b]:Ig.

Mix peptide and H-2D[b]:Ig together in PBS, pH 7.2, incubate at 37°C overnight. The peptide-loaded H-2D[b]:Ig can be stored at 4°C for up to 1 week.

Protocol 2: Immunofluorescent Staining Protocol

1. Prepare peptide-loaded H-2D[b] protein staining cocktail by mixing 0.25 -4 μg of peptide-loaded H-2D[b] protein/test with 0.25 -4 μg of PE-conjugated A85-1 mAb (anti-mouse IgG1, Cat. no. 550083)/test at a ratio of 1:1 or 1:2 of dimer:A85-1 mAb. Incubate the mixture for 60 minutes at RT, protect from exposure to light.
2. Add 0.25 - 4 μg of purified mouse IgG1 isotype control mAb A111-3 (Cat. no. 553485)/test to the staining cocktail (see Step 1 above). Incubate the staining cocktail for 30 minutes at RT, protect from exposure to light.
3. Resuspend mouse cells in FACS staining buffer [eg, DPBS, 1% FCS, 0.09% NaN3 or BD Pharmingen™ Stain Buffer (FBS), Cat. no. 554656], containing the appropriate amount of Mouse BD Fc Block™ purified anti-mouse CD16/CD32 mAb 2.4G2 (Cat. no. 553141/553142), at a concentration of approximately 10^6 cells per 50 μl . Incubate 10 minutes at 4°C. Add $\sim 1 \times 10^6$ cells per staining tube (eg, 12 x 75 mm tube, BD Falcon™ Cat. no. 352008).
4. Add 50 μl FACS buffer containing the optimal per test amount of the staining cocktail to each sample, plus any other cell-surface marker-specific antibodies to be used. Incubate 60 minutes at 4°C.
5. Wash cells 2 \times with 2 ml FACS buffer, centrifuge for 5 minutes at 250 \times g, and discard supernatant. Resuspend cell pellet in approximately 0.5 ml staining buffer in a tube appropriate for the flow cytometer.

BD Biosciences

bdbiosciences.com

United States	Canada	Europe	Japan	Asia Pacific	Latin America/Caribbean
877.232.8995	800.979.9408	32.53.720.550	0120.8555.90	65.6861.0633	55.11.5185.9995

For country contact information, visit bdbiosciences.com/contact

Conditions: The information disclosed herein is not to be construed as a recommendation to use the above product in violation of any patents. BD Biosciences will not be held responsible for patent infringement or other violations that may occur with the use of our products. Purchase does not include or carry any right to resell or transfer this product either as a stand-alone product or as a component of another product. Any use of this product other than the permitted use without the express written authorization of Becton, Dickinson and Company is strictly prohibited.

For Research Use Only. Not for use in diagnostic or therapeutic procedures. Not for resale.

Unless otherwise noted, BD, BD Logo and all other trademarks are property of Becton, Dickinson and Company. © 2011 BD



Protocol 3: Alternative: Immunofluorescent Staining Protocol

1. Resuspend mouse cells in FACS staining buffer [eg, DPBS, 1% FCS, 0.09% NaN₃ or BD Pharmingen™ Stain Buffer (FBS), Cat. no. 554656], containing the appropriate amount of Mouse BD Fc Block™ purified anti-mouse CD16/CD32 mAb 2.4G2 (Cat. no. 553141/553142), at a concentration of approximately 10⁶ cells per 50 µl. Incubate 10 minutes at 4°C. Add ~1 × 10⁶ cells per staining tube (eg, 12 x 75 mm tube, BD Falcon™ Cat. no. 352008).
2. Add 0.25 to 4 µg of peptide-loaded H-2D[b]:Ig protein to cell suspension. Incubate 60 minutes at 4°C.
3. Wash cells 1× with 2 ml FACS buffer, centrifuge for 5 minutes at 250 × g, and aspirate supernatant.
4. Resuspend cells in 100 µl FACS buffer containing appropriately diluted fluorescent secondary reagent. We typically use PE-conjugated A85-1 mAb (anti-mouse IgG1, Cat. no. 550083). Incubate 30 - 60 minutes at 4°C.
5. Wash cells 2× with 2 ml FACS buffer, centrifuge for 5 minutes at 250 × g, and discard supernatant. Resuspend cell pellet in approximately 0.5 ml staining buffer in a tube appropriate for the flow cytometer.

Suggested Companion Products

Catalog Number	Name	Size	Clone
554656	Stain Buffer (FBS)	500 ml	(none)
550083	PE Rat Anti-Mouse IgG1	0.1 mg	A85-1
553141	Purified Rat Anti-Mouse CD16/CD32 (Mouse BD Fc Block™)	0.1 mg	2.4G2
553142	Purified Rat Anti-Mouse CD16/CD32 (Mouse BD Fc Block™)	0.5 mg	2.4G2
553485	Purified Mouse IgG1 λ Isotype Control	0.5 mg	A111-3

Product Notices

1. Since applications vary, each investigator should titrate the reagent to obtain optimal results.
2. Caution: Sodium azide yields highly toxic hydrazoic acid under acidic conditions. Dilute azide compounds in running water before discarding to avoid accumulation of potentially explosive deposits in plumbing.
3. Please refer to www.bdbiosciences.com/pharmingen/protocols for technical protocols.

References

Dal Porto J, Johansen TE, Catipovic B, et al. A soluble divalent class I major histocompatibility complex molecule inhibits alloreactive T cells at nanomolar concentrations. *Proc Natl Acad Sci U S A*. 1993; 90(14):6671-6675. (Biology)

Mendel I, Kerlero de Rosbo N, Ben-Nun A. encephalomyelitis in H-2b mice: fine specificity and T cell receptor V beta expression of encephalitogenic T cells. *Eur J Immunol*. 1995; 25(7):1951-1959. (Biology)

Murali-Krishna K, Altman JD, Suresh M, et al. Counting antigen-specific CD8 T cells: a reevaluation of bystander activation during viral infection. *Immunity*. 1998; 8(2):177-187. (Biology)

Rammensee HG, Friede T, Stevanović S. MHC ligands and peptide motifs: first listing. *Immunogenetics*. 1995; 41(4):178-228. (Biology)

Schneck JP, Slansky JE, O'Herrin SM, Greten TF. Monitoring antigen-specific T cells using MHC-Ig dimers. In: Coligan J, Kruisbeek D, Margulies EM, Shevach EM, Strober W, ed. *Current Protocols in Immunology*. New York: John Wiley & Sons, Inc; 2000:17.2.1-17.2.17. (Biology)

Selin LK, Lin MY, Kraemer KA, et al. Attrition of T cell memory: selective loss of LCMV epitope-specific memory CD8 T cells following infections with heterologous viruses. *Immunity*. 1999; 11(6):733-742. (Biology)

Sun D, Zhang Y, Wei B, Peiper SC, Shao H, Kaplan HJ. Encephalitogenic activity of truncated myelin oligodendrocyte glycoprotein (MOG) peptides and their recognition by CD8+ MOG-speci@c T cells on oligomeric MHC class I molecules. *Int Immunol*. 2003; 26(10):2470-2479. (Biology: Flow cytometry)

BD Biosciences

bdbiosciences.com

United States	Canada	Europe	Japan	Asia Pacific	Latin America/Caribbean
877.232.8995	800.979.9408	32.53.720.550	0120.8555.90	65.6861.0633	55.11.5185.9995

For country contact information, visit bdbiosciences.com/contact

Conditions: The information disclosed herein is not to be construed as a recommendation to use the above product in violation of any patents. BD Biosciences will not be held responsible for patent infringement or other violations that may occur with the use of our products. Purchase does not include or carry any right to resell or transfer this product either as a stand-alone product or as a component of another product. Any use of this product other than the permitted use without the express written authorization of Becton, Dickinson and Company is strictly prohibited.

For Research Use Only. Not for use in diagnostic or therapeutic procedures. Not for resale.

Unless otherwise noted, BD, BD Logo and all other trademarks are property of Becton, Dickinson and Company. © 2011 BD

