



Connected - Integrated - Secured

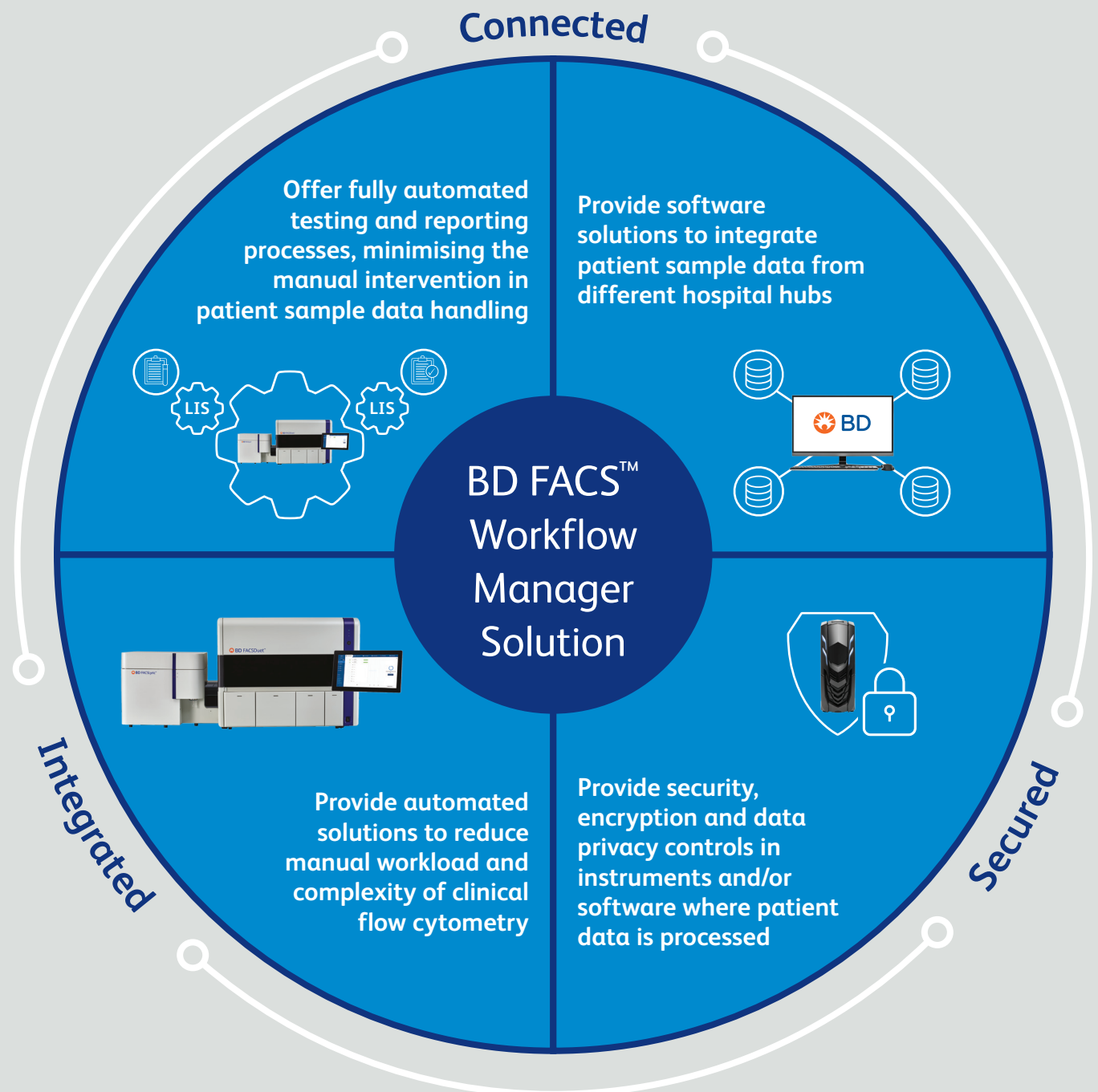
BD FACS™ Workflow Manager Solution.

Optimising efficiency and productivity in clinical flow cytometry laboratories.

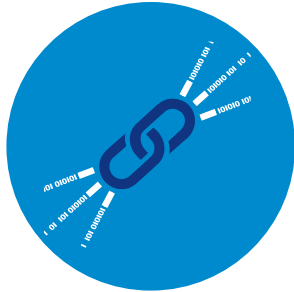


The BD FACS™ Workflow Manager

The BD FACS™ Workflow Manager is a middleware solution providing seamless bi-directional workflows, secure connectivity and long-term data files storage solution, all accessible anytime, anywhere*.



Connected



Multi instrument connectivity

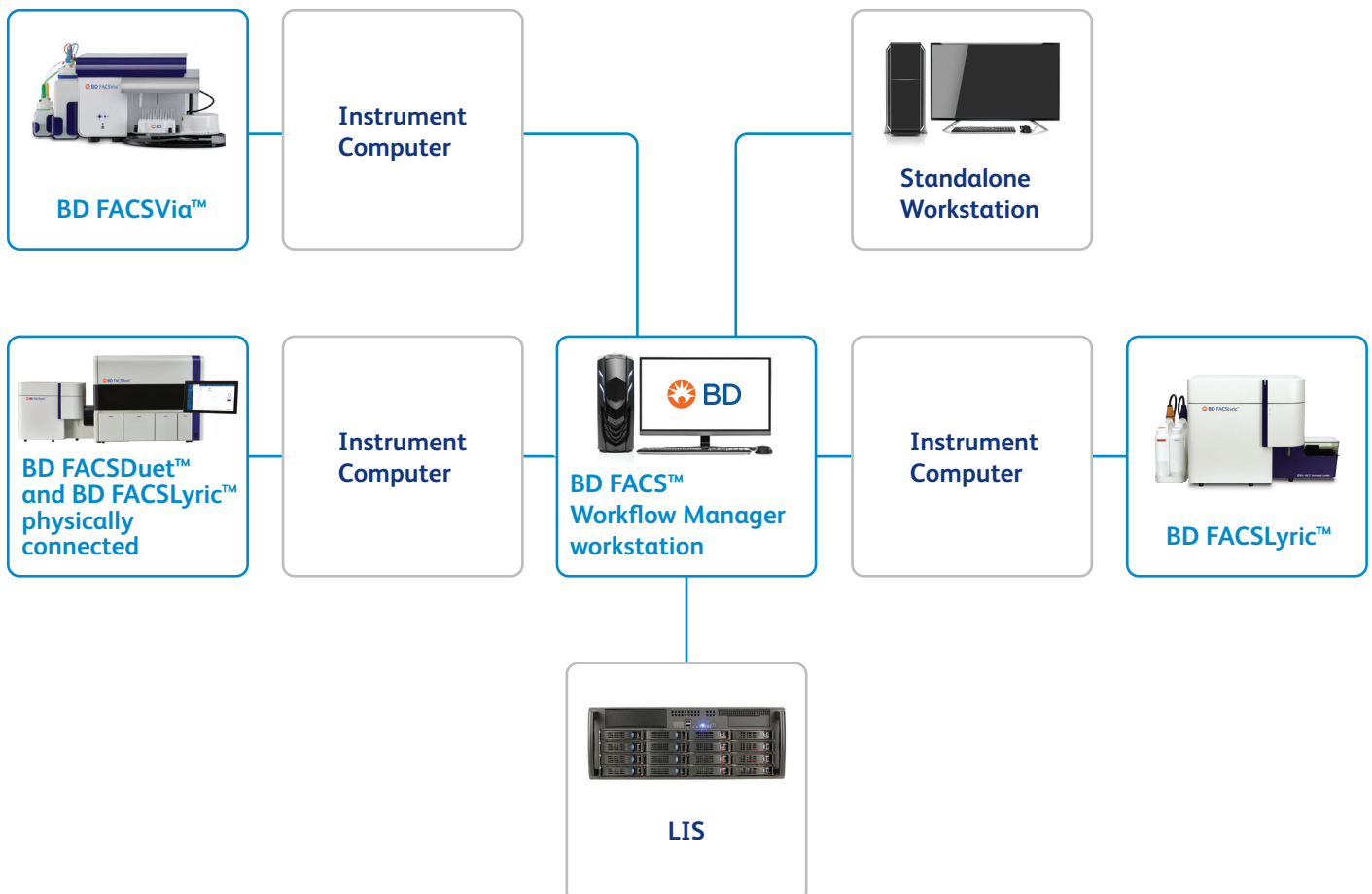
Unlimited users

Remote service

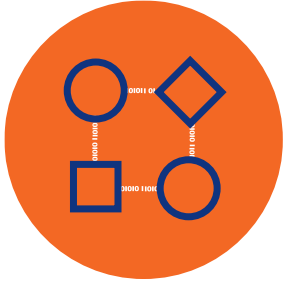
Concurrent LIS connections

As clinical laboratories strive for improved productivity, the need to interface laboratory instruments to a laboratory information system (LIS) has become increasingly important.

Developed by BD[®], the BD FACS[™] Workflow Manager middleware solution allows bi-directional communication of test and patient sample data between BD Flow Cytometers (BD FACSLytic[™], BD FACSVia[™]), BD Sample Preparation System (BD FACSDuet[™] and BD FACSDuet[™] Premium Sample Preparation System), analysis workstations and the Hospital and/or Laboratory Information System (HIS/LIS).



Integrated



Retrieval of sample data files
anytime, from anywhere*

Single interface for multiple
assay workflows

Long-term data files
storage solution

Data information
delivered in real time

Full tracking of patient
sample data

Full testing history of
re-analysis and re-runs

By providing automated reporting workflows and data transfer between the Laboratory Information System (LIS) or Hospital Information System (HIS) and the BD instrumentation, the BD FACS™ Workflow Manager reduces manual tasks and workload, minimising the manual intervention in patient sample data handling, optimising efficiency and productivity in clinical flow cytometry laboratories and patient sample data management.



Secured



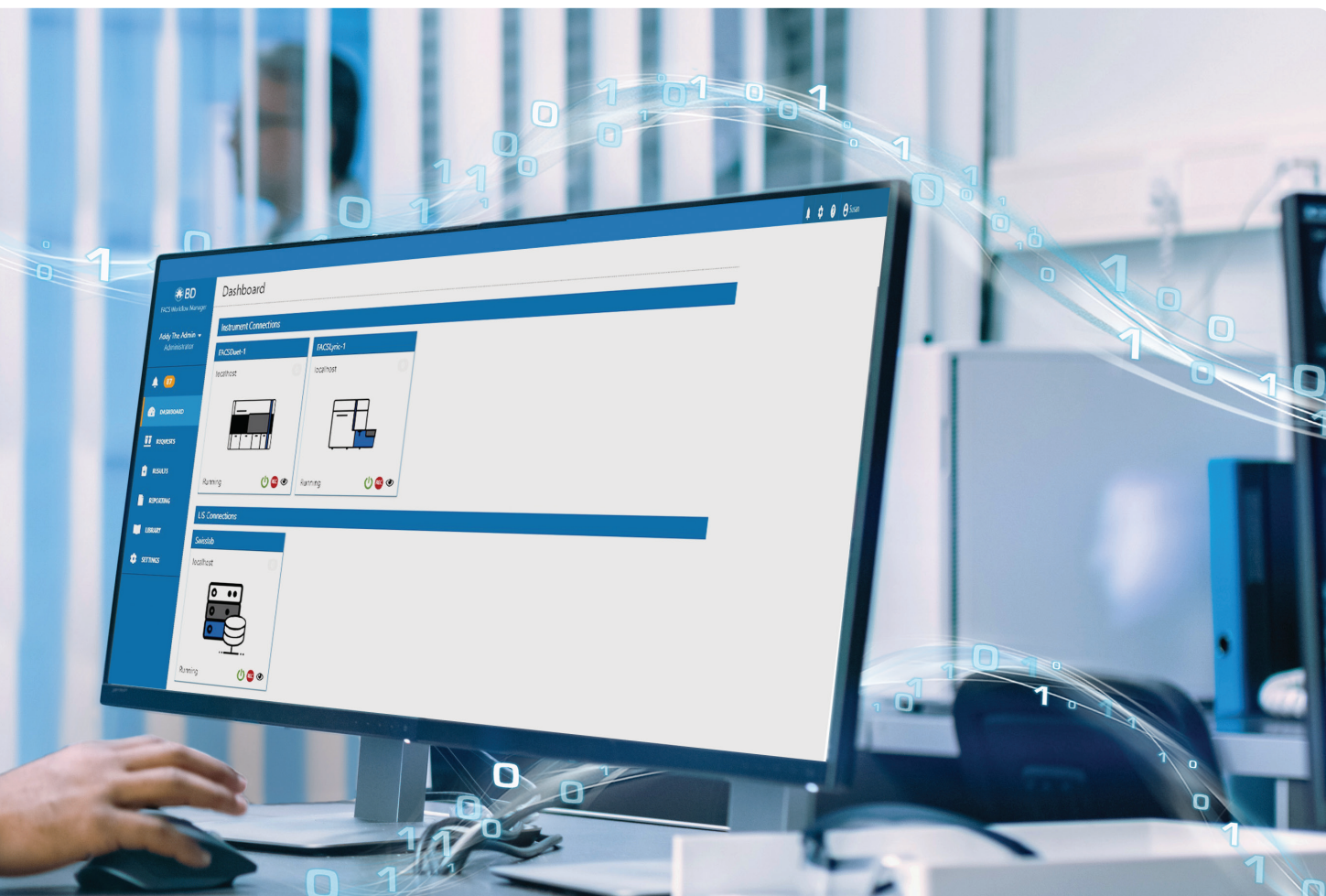
Multi-user permission level

Encryption and integrity of
patient sample data

Cybersecurity and Data
Privacy

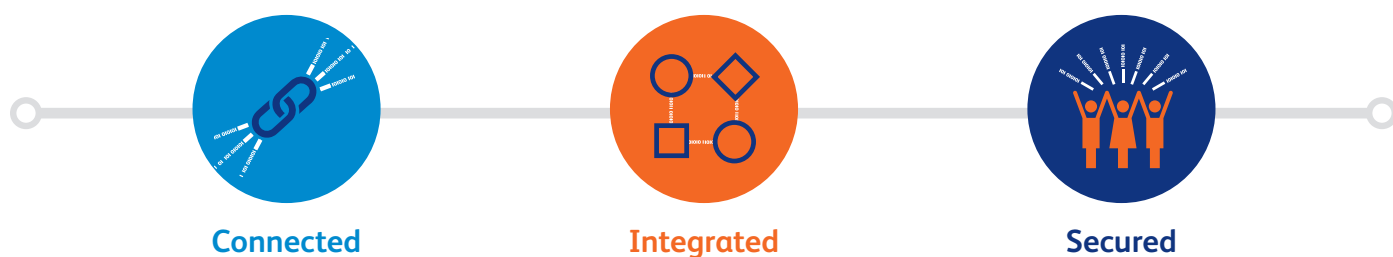
System and samples audit
trail

In line with GDPR requirements for protection of personal data and privacy of all European citizens, this BD middleware solution provides security, encryption and data privacy controls in instruments and/or software where patient data is processed and stored.



Optimise laboratory efficiency and productivity, improve automation and turnaround time, guarantee data protection and privacy.

The BD FACS™ Workflow Manager informatic middleware solution helps you to address laboratory challenges and improve laboratory performance



Ordering information

Product	CAT No.
BD FACS™ Workflow Manager software – includes 2 connections and 1 year warranty	664011
BD FACS™ Workflow Manager Computer Assembly - includes workstation, UPS and 1 year warranty	666609
BD FACS™ Workflow Manager 24-inch Monitor - includes 1 year warranty	663454
BD FACS™ Workflow Document Management software – includes 1 year warranty	664012
BD FACS™ Workflow Automatic Review software – includes 1 year warranty	664013
BD FACS™ Workflow Manager Connection Service - includes one connection license and 1 year warranty	664014
BD FACS™ Workflow Manager Client software – includes 1 year warranty	664015

*As allowed by license

BD- Europe, Terre-Bonne Park - A4, Route de Crassier 17, 1261 Eysins, Switzerland

BD Flow Cytometers, the BD FACSDuet™ Sample Preparation System and the BD FACSDuet™ Premium Sample Preparation System are Class 1 Laser Products



The BD FACSLyric™ Flow Cytometer with the BD FACSuite™ Clinical and BD FACSuite™ Applications, the BD FACSDuet™ Sample Preparation System and the BD FACSDuet™ Premium Sample Preparation System are in vitro diagnostic medical devices bearing a CE mark.

The BD FACSVia™ Flow Cytometer is no longer sold in EU

[bd.com](https://www.bd.com)

