

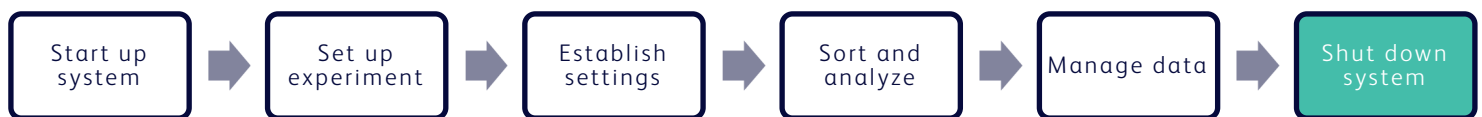
Job Aid

BD FACSDiscover™ S8 Cell Sorter: Performing a daily system shutdown

This job aid contains instructions for how to perform a daily shutdown. A daily shutdown cleans the sample path and fills the flow cell with BD® Detergent Solution in preparation for shutdown.

NOTE If you are shutting down the system for more than two days, select the long-term shutdown procedure. See the job aid for performing a long-term shutdown.

For additional information, see the Maintenance section in the *BD FACSDiscover™ S8 Cell Sorter with BD CellView™ Image Technology and BD SpectralFX™ Technology User's Guide*.



Materials Needed

- 10% bleach (approximately 3 mL)
- Deionized (DI) water
- BD® Detergent Solution Concentrate

Before you begin

Prepare 3 mL of 1.5% BD® Detergent Solution from the BD® Detergent Solution Concentrate. Do not dilute the entire bottle. Follow the instructions on the label for correct dilution information and see instead the safety data sheet regarding handling.

CAUTION Never mix BD® Detergent Solution and bleach because it can create dangerous fumes.

Cleaning the sample line

This procedure cleans the sample line with a bleach solution. We recommend cleaning the sample line at the end of each experiment, between users, and before shutting down.

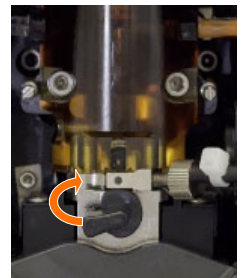
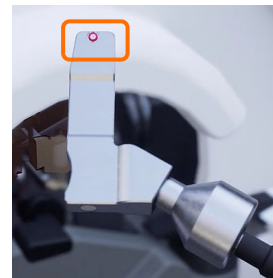
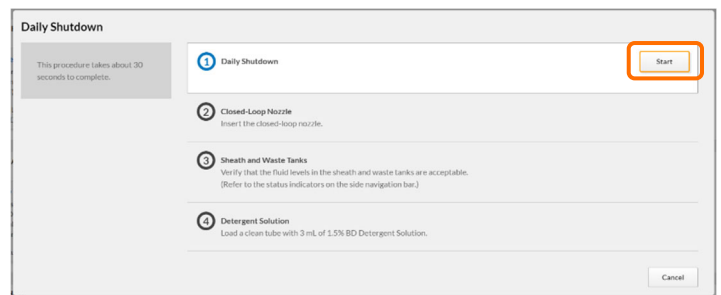
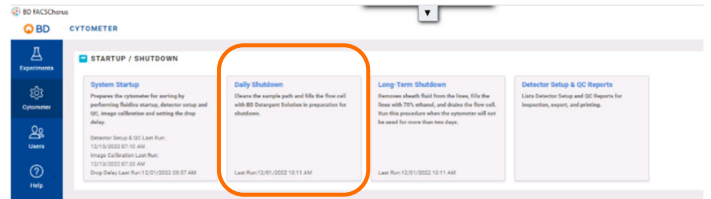
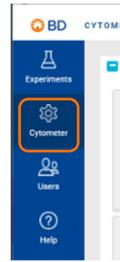
1. Load a tube containing 3 mL of a 10% bleach solution onto the sample loading port.
2. From an open experiment, from the View Data tab, click **Load**.
3. After approximately 5 minutes, click **Unload**.
4. Load a tube containing 3 mL of DI water onto the sample loading port.

NOTE It is important to always run a tube of DI water after running bleach on the cell sorter.

5. Repeat steps 2 and 3.

Performing a daily shutdown

- In the navigation bar, click **Cytometer** to go to the Cytometer page.
- Click **Daily Shutdown**.
- Follow the prompts on the screen to complete each numbered step.
 - Click **Start** to begin the shutdown.
 - At prompt 2, insert the closed loop nozzle with the O-ring facing up, then click **Continue**.
 - Verify the fluid levels by checking the status indicators, then click **Continue**.
 - Load a clean tube with 3mL of 1.5% BD[®] Detergent Solution, then click **Continue**.
 - Once the procedure has been completed successfully, click **Close**.
- Log out of BD FACSDiagnostic™ Software.
- Power off the cytometer unit by pressing the button on the right side of the instrument.
- Shut down the computer workstation.



This material is for training purposes.
For Research Use Only. Not for use in diagnostic or therapeutic procedures.

BD Life Sciences, Milpitas, California, 95035, USA

bdbiosciences.com

BD, the BD Logo, BD CellView, BD FACSDiagnostic, BD FACSDiagnostic S8 and BD SpectralFX are trademarks of Becton, Dickinson and Company or its affiliates. ©2024 BD. All rights reserved. NPM-1218 (v2.0)

