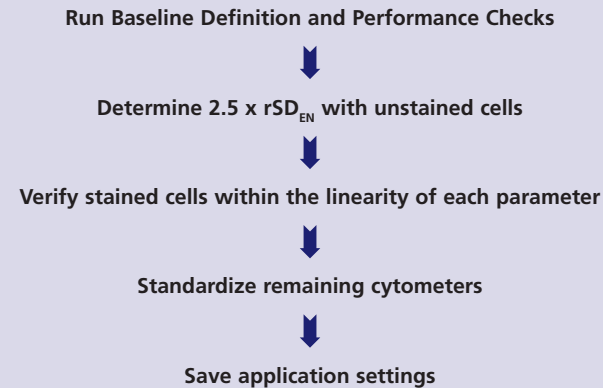
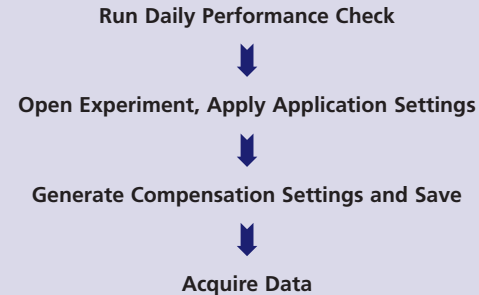


## Creating and Saving Optimal Settings for BD FACSDiva-Based Platforms



## Reusing optimal settings in BD FACSDiva software over time

To reuse your saved optimal settings over time, follow these steps to update your instrument settings for that day.



For additional information, see the *Technical Bulletin: Standardizing Application Setup Across Multiple Flow Cytometers Using BD FACSDiva Version 6 Software*.



### BD Biosciences Regional Offices

**Australia**  
Toll Free 1800 656 100  
Tel 61.2.8875.7000  
Fax 61.2.8875.7200  
bdbiosciences.com/anz

**Europe**  
Tel 32.2.400.98.95  
Fax 32.2.401.70.94  
bdbiosciences.com/eu

**Latin America/  
Caribbean**  
Toll Free 0800.771.71.57  
Fax 55.11.5185.9688  
bdbiosciences.com/br

**Singapore**  
Tel 65.6861.8691  
Fax 65.6860.1593  
bdbiosciences.com/sg

**Canada**  
Tel 866.979.9408  
Fax 888.229.9918  
bdbiosciences.com/ca

**India**  
Tel 91.124.2383566  
Fax 91.124.2383224/25/26  
bdbiosciences.com/in

**New Zealand**  
Toll Free 0800 572.468  
Tel 64.9.574.2468  
Fax 64.9.574.2469  
bdbiosciences.com/anz

**United States**  
US Orders 855.236.2772  
Technical Service  
877.232.8995  
Fax 800.325.9637  
bdbiosciences.com

**China**  
Tel 86.21.3210.4610  
Fax 86.21.5292.5191  
bdbiosciences.com/cn

**Japan**  
Nippon Becton Dickinson  
Toll Free 0120.8555.90  
Fax 81.24.593.3281  
bd.com/jp

Office locations are available on our websites.

## BD FACSDiva™ Software

Standardizing Application Settings Across Multiple Cytometers

Multicolor flow cytometry is increasingly used in research laboratories to generate more data from a given experiment.

A key aspect of effectively using multicolor flow is ensuring that the experiment can be performed consistently over time and across instruments. Standardizing experiments using application settings can ensure consistency of results over time across multiple systems. To achieve this consistency, we recommend the use of the Application Settings workflow in BD FACSDiva software.

To create and save the optimal settings for specific experiments, follow these basic steps:

- Step 1: Run baseline definitions and performance checks**
- Step 2: Determine 2.5 x rSD<sub>EN</sub> with unstained cells**
- Step 3: Verify stained cells within linearity of each parameter**
- Step 4: Standardize remaining cytometers**
- Step 5: Save optimal application settings**

For Research Use Only. Not for use in diagnostic or therapeutic procedures.

© 2014 Becton, Dickinson and Company. All rights reserved. No part of this publication may be reproduced, transmitted, transcribed, stored in retrieval systems, or translated into any language or computer language, in any form or by any means electronic, mechanical, magnetic, optical, chemical, manual, or otherwise, without prior written permission from BD Biosciences.

Purchase does not include or carry any right to resell or transfer this product either as a stand alone product or as a component of another product. Any use of this product other than the permitted use without the express written authorization of Becton, Dickinson and Company is strictly prohibited. Product availability and prices are subject to change without notice.

BD, BD Logo and all other trademarks are property of Becton, Dickinson and Company. © 2014 BD

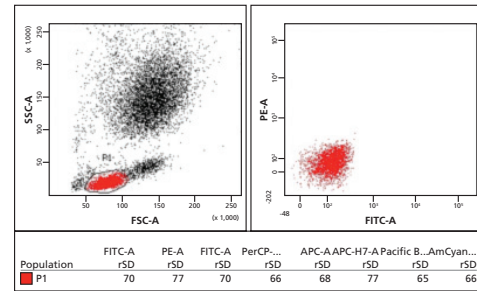


### Step 1: Run baseline definition and daily performance check

- Verify that CS&T Baseline has been run for the selected configuration.
- In the CS&T application, run a Daily Performance Check on each cytometer.
- Record the  $rSD_{EN}$  and linearity max for each fluorescence channel for each cytometer.

### Step 2: Determine $2.5 \times rSD_{EN}$ with unstained cells

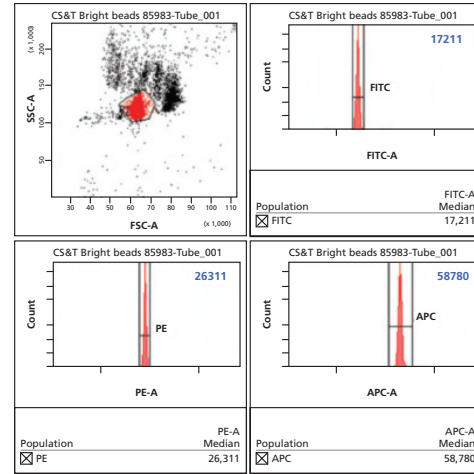
- Multiply the  $rSD_{EN}$  by 2.5 for all fluorescence channels.
- Compare these values across all cytometers and record the highest value for each channel.
- Adjust the PMT voltage (PMTV) for each channel until the  $rSD$  for unstained cells reaches this value.



An example of a worksheet used to acquire unstained cells and adjust PMTVs until the target  $rSD$  values ( $2.5 \times rSD_{EN}$ ) are reached.

### Step 3: Verify stained cells within the linearity of each parameter

- Divide the linearity max value by 2 for all fluorescence channels.
- Compare these values across all cytometers and record the lowest value for each channel.
- Using highly positive cell populations, verify that the median fluorescence intensity (MFI) of the positive population falls at or below this number. *Note: If the MFI exceeds this value for any channel, lower the PMTV.*



An example of a worksheet used to verify that MFI values for stained cells fall within the linearity of each parameter.

### Step 4: Standardize the remaining cytometers

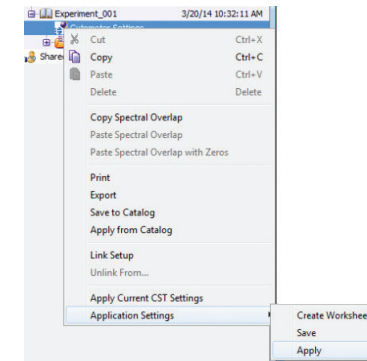
- Using BD™ CompBead particles (BD CompBeads) stained with antibodies from your experiment, record 20,000 events.

*Note: CS&T beads (bright peak) can be used for instruments with identical optical configurations.*

- Determine and record the MFI of the positive population for every channel.
- On the remaining cytometers, using the same lot of BD Comp Beads and each reagent, adjust the PMTV for each channel until the target MFI is reached.

### Step 5: Save application settings

- Create application settings by right-clicking the settings under the experiment, then selecting **Application Settings > Save**.



- A template may also be created and shared across instruments with identical configurations. Right-click the experiment, and select **Export > Experiment Template**.

