

BD Quantibrite™ Beads

PE Fluorescence Quantitation Kit

Form	Catalog number
PE	340495

Product availability varies by region. Contact BD Biosciences Customer Support or your local sales representative for information.

Research Applications

Research applications include studies of:

- Flow cytometric estimation of antibodies bound per cell (ABC)^{1,2}

Description

Each BD Quantibrite™ PE tube contains a lyophilized pellet of beads conjugated with four levels of phycoerythrin (PE). The pellet is restrained in the bottom of the tube by a stainless steel retainer. The number of PE molecules per bead at each level varies among lots; lot-specific information is included with each kit. Each BD Quantibrite™ tube contains gelatin and sodium azide and is packaged in a foil pouch. There are 10 tubes per kit.

BD Quantibrite™ PE tubes are designed for use with PE-labeled monoclonal antibodies for the purpose of estimating ABCs by flow cytometry. When you run a BD Quantibrite™ PE tube at the same instrument settings as the assay, the FL2 axis can be converted into the number of PE molecules bound per cell. By using known ratios of PE to antibodies, you can then convert PE molecules per cell to antibodies per cell. These factors, and others that affect quantitation, are discussed in detail in the BD Quantibrite™ white paper.³

Procedure

Preparation

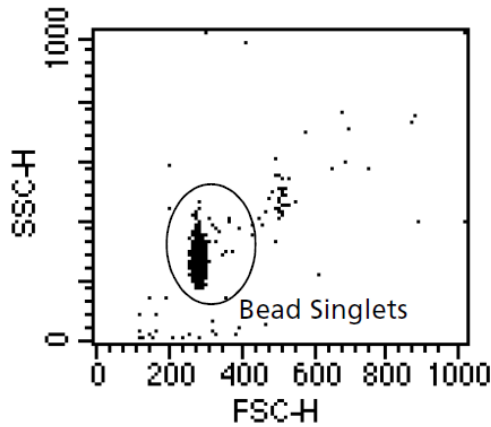
Remove the BD Quantibrite™ PE tube from the foil pouch just prior to use, reconstitute using 0.5 mL of buffer, such as phosphate buffered saline (PBS) with sodium azide plus 0.5% bovine serum albumin (BSA), and vortex.

Flow cytometric analysis

1. Launch BD CellQuest™ software. Using the setup mode, adjust all parameters for your cellular assay. Make sure the instrument is compensated properly, for example, with BD Calibrite™ Beads.
2. Open the Quantitation Acquisition document, located in the Sample Files folder in the BD CellQuest™ folder (only in BD CellQuest™ 3.1 and later versions). Modify the document to include plots for your cellular assay.
3. Run the BD Quantibrite™ PE tube, thresholding on FSC or SSC, and collect 10,000 events. The FSC and SSC parameter settings can be changed to gate on bead singlets without altering quantitation (Figure 1). All instrument settings for fluorescence and compensation must be the same as the cellular assay settings.

For Research Use Only. Not for use in diagnostic or therapeutic procedures.

Figure 1 Bead singlets



4. Adjust the gate around the bead singlets (Figure 1) on the FSC-H vs SSC-H plot. The singlet bead population is analyzed using a histogram plot of FL2-H in linear values.
5. Adjust markers around the four bead peaks (Figure 2). View the histogram statistics (Figure 3), making sure that the geometric means are displayed.

Figure 2 Bead peaks

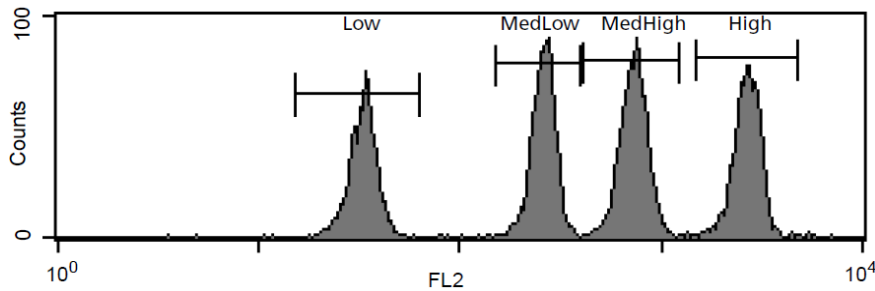


Figure 3 Bead histogram statistics

Histogram Statistics				
File: S106066.012	Log Data Units: Linear Values			
Sample ID:	Acquisition Date: 6-Jun-96			
Gate: Bead Singlets	Gated Events: 9919			
Total Events: 10000	X Parameter: FL2-H (Log)			
Marker	Left, Right	Events	Geo Mean	CY
All	1, 9910	9919	393.20	109.16
Low	15, 62	2044	32.28	14.26
MedLow	149, 392	2540	250.48	12.05
MedHigh	407, 1219	2817	699.69	14.29
High	1472, 4698	2494	2530.73	13.30

6. Select the Histogram Statistics view and choose Quantitative Calibration from the Acquire menu.
7. Click the Copy Means button to copy the geometric means of the four bead peaks from the histogram statistics window.
8. Enter the lot-specific PE/bead values provided on the flyer packaged in the BD Quantibrite™ PE kit.
9. Press the tab key; then click Calibrate for BD CellQuest™ to perform the regression analysis, and to display the slope, intercept, and correlation coefficient.
10. Save the Experiment document.
11. Using the same instrument settings and Experiment document, acquire your cellular assay samples. All subsequently collected data files will save the information displayed in the Quantitative Calibration window. You can print an active Quantitative Calibration window by selecting Print from the File menu. QuantiCALC™ can read the regression information for analysis of assay files.

For detailed information on using the Quantitative Calibration option, refer to Chapter 10 of the *BD CellQuest™ Software Reference Manual* (version 3.1 or later).

Manual analysis

Use the following procedure to calculate the PE molecules per cell of the population of interest, if you do not have BD CellQuest™ 3.1 or later versions.

1. On a statistics spreadsheet, enter the geometric means from the Histogram Statistics view (Figure 3) for the four beads.
2. Enter the lot-specific values for the PE molecules per bead (provided in each BD Quantibrite™ PE kit box).
3. Calculate the Log₁₀ for the FL2 geometric means and for the PE molecules per bead as illustrated in the following table.

Example:

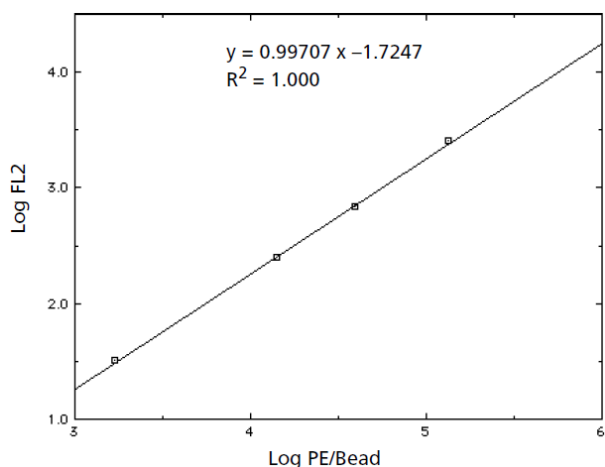
FL2 Geometric Means	Log FL2	PE Molecules/Bead	Log PE Molecules/Bead
32.28	1.508	1,700	3.230
250.48	2.399	14,200	4.152
699.69	2.844	39,400	4.595
2,530.73	3.403	133,400	5.125

4. Plot a linear regression of Log₁₀ PE molecules per bead against Log₁₀ fluorescence, using the following equation:

$$y = mx + c$$

where y equals Log₁₀ fluorescence and x equals Log₁₀ PE molecules per bead (Figure 4)

Figure 4 Linear regression of Log₁₀ PE molecules per bead



5. To determine ABC[†] for an unknown cell population, substitute Log FL2 geometric means in the equation and solve for Log ABC. Determine the anti-Log to get ABC.

Example:

If FL2 fluorescence of the cell population is 500, and $\text{Log}_{10} 500 = 2.699$, using the equation from Figure 4, $y = 0.99707x - 1.7247$, we solve for x:

$$2.699 = 0.99707x - 1.7247$$

$$x = \frac{2.699 + 1.7247}{0.99707} = 4.4367$$

$$x = \text{Log}_{10} \text{ PE/cell} = 4.4367$$

$$\text{PE molecules/cell} = 27,334$$

When PE:mAb ratio is 1:1, then: ABC = 27,334

Handling and Storage

Store foil pouches at 2–8 °C and do not freeze. Protect from exposure to light. The reagent is stable until the expiration date shown on the pouch label when stored as directed.

Reconstitute the pellet immediately after removing the tube from the pouch. The reconstituted pellet is stable for 24 hours when protected from light and stored at 2–8 °C.

Limitations

Factors that can affect quantitation include, but are not limited to, fixation, source of antibody, and clonal variation. Refer to the BD Quantibrite™ white paper for more information.³

Warning

All biological specimens and materials coming in contact with them are considered biohazards. Handle as if capable of transmitting infection^{4,5} and dispose of with proper precautions in accordance with federal, state, and local regulations. Never pipette by mouth. Wear suitable protective clothing, eyewear, and gloves.

Go to regdocs.bd.com to download the Safety Data Sheet.

[†] This calculation assumes a PE to mAb ratio of 1:1.

Warranty

Unless otherwise indicated in any applicable BD general conditions of sale for non-US customers, the following warranty applies to the purchase of these products.

THE PRODUCTS SOLD HEREUNDER ARE WARRANTED ONLY TO CONFORM TO THE QUANTITY AND CONTENTS STATED ON THE LABEL OR IN THE PRODUCT LABELING AT THE TIME OF DELIVERY TO THE CUSTOMER. BD DISCLAIMS HEREBY ALL OTHER WARRANTIES, EXPRESSED OR IMPLIED, INCLUDING WARRANTIES OF MERCHANTABILITY AND FITNESS FOR ANY PARTICULAR PURPOSE AND NONINFRINGEMENT. BD'S SOLE LIABILITY IS LIMITED TO EITHER REPLACEMENT OF THE PRODUCTS OR REFUND OF THE PURCHASE PRICE. BD IS NOT LIABLE FOR PROPERTY DAMAGE OR ANY INCIDENTAL OR CONSEQUENTIAL DAMAGES, INCLUDING PERSONAL INJURY, OR ECONOMIC LOSS, CAUSED BY THE PRODUCT.

References

1. Davis K, Abrams B, Hoffman RA, Bishop JE. Quantitation and valence of antibodies bound to cells. *Cytometry*. 1996; #AC150 (Suppl. 8):150.
2. Iyer S, Suni M, Davis K, Maino V. Expression of CD69 on activated T cells using R-phycoerythrin labeled beads. *Cytometry*. 1996; #AC78 (Suppl.8):113.
3. Iyer S, Bishop J, Abrams, B, et al. *Quantibrite: A New Standard for Fluorescence Quantitation*. Becton Dickinson Immunocytometry Systems, San Jose, CA. 1997. White Paper.
4. *Protection of Laboratory Workers from Occupationally Acquired Infections; Approved Guideline—Fourth Edition*. Wayne, PA: Clinical and Laboratory Standards Institute; 2014. CLSI document M29-A4.
5. Centers for Disease Control and Prevention. 2007 Guideline for Isolation Precautions: Preventing Transmission of Infectious Agents in Healthcare Settings. <https://www.cdc.gov/infectioncontrol/guidelines/isolation/index.html>. Accessed March 12, 2019.

Patents and Trademarks

For US patents that may apply, see bd.com/patents.

BD, the BD Logo, BD CellQuest, Calibrite and Quantibrite are trademarks of Becton, Dickinson and Company or its affiliates. All other trademarks are the property of their respective owners. © 2024 BD. All rights reserved.

Contact Information

Becton, Dickinson and Company

BD Biosciences

155 North McCarthy Boulevard

Milpitas, California 95035 USA

bdbiosciences.com

ResearchApplications@bd.com