

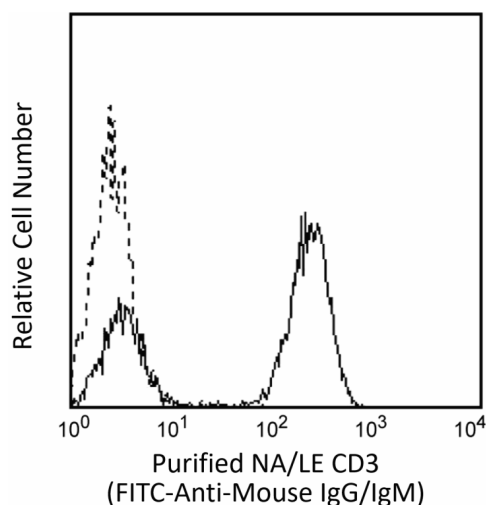
Technical Data Sheet

Purified NA/LE Mouse Anti-Human CD3**Product Information**

Material Number:	555329
Alternate Name:	CD3ε; CD3E; T3E; TCRE; T-cell surface antigen T3/Leu-4 epsilon
Size:	0.5 mg
Concentration:	1.0 mg/ml
Clone:	UCHT1 (also known as UCHT-1; UCHT 1)
Immunogen:	Human infant thymocytes and peripheral blood lymphocytes from a Sézary Syndrome donor
Isotype:	Mouse (BALB/c) IgG1, κ
Reactivity:	QC Testing: Human
Workshop:	I WT3; III 471
Storage Buffer:	No azide/low endotoxin: Aqueous buffered solution containing no preservative, sterile filtered(0.2µm pore size membrane). Endotoxin level is ≤0.1 EU/µg (≤0.01 ng/µg) of protein as determined by the LAL assay.

Description

The UCHT1 monoclonal antibody specifically binds to the human CD3ε-chain, a 20-kDa subunit of the CD3/T cell antigen receptor complex. CD3ε is expressed on 70-80% of normal human peripheral blood lymphocytes and 60-85% of thymocytes. Studies from the HLDA Workshop show that this antibody is mitogenic for CD3ε-positive cells when used in conjunction with costimulatory agents such as pokeweed mitogen or anti-CD28 antibody. CD3 plays a central role in signal transduction during antigen recognition. The UCHT1 antibody stains both surface and intracellular CD3ε unlike the other CD3 clone, HIT3a, that stains only extracellular CD3ε.



Flow cytometric analysis of CD3 expression on human peripheral blood lymphocytes. Human whole blood was stained with either Purified NA/LE Mouse IgG1 κ Isotype Control (Cat. No. 554721; dashed line histogram) or Purified NA/LE Mouse Anti-Human CD3 antibody (Cat. No. 555329/562280/562310; solid line histogram). Erythrocytes were lysed with BD Pharm Lyse™ Lysing Buffer (Cat. No. 555899). The cells were washed and then stained with FITC Goat Anti-Mouse IgG/IgM (Cat. No. 562292; dashed line histogram). The erythrocytes were lysed with BD Pharm Lyse™ Lysing Buffer (Cat. No. 555899). The fluorescence histograms were derived from events with the forward and side light-scatter characteristics of viable lymphocytes. Flow cytometry was performed using a BD™ LSR II Flow Cytometer System.

Preparation and Storage

Store undiluted at 4°C.

The monoclonal antibody was purified from tissue culture supernatant or ascites by affinity chromatography.

This preparation contains no preservatives, thus it should be handled under aseptic conditions.

Application Notes**Application**

Flow cytometry	Routinely Tested
Functional assay	Tested During Development

BD Biosciences

bdbiosciences.com

United States 877.232.8995 Canada 866.979.9408 Europe 32.2.400.98.95 Japan 0120.8555.90 Asia Pacific 65.6861.0633 Latin America/Caribbean 55.11.5185.9995

For country contact information, visit bdbiosciences.com/contact

Conditions: The information disclosed herein is not to be construed as a recommendation to use the above product in violation of any patents. BD Biosciences will not be held responsible for patent infringement or other violations that may occur with the use of our products. Purchase does not include or carry any right to resell or transfer this product either as a stand-alone product or as a component of another product. Any use of this product other than the permitted use without the express written authorization of Becton, Dickinson and Company is strictly prohibited.

For Research Use Only. Not for use in diagnostic or therapeutic procedures. Not for resale.
© 2017 BD. BD, the BD Logo and all other trademarks are property of Becton, Dickinson and Company.

555329 Rev. 7



Suggested Companion Products

<u>Catalog Number</u>	<u>Name</u>	<u>Size</u>	<u>Clone</u>
555988	FITC Goat Anti-Mouse IgG/IgM	0.5 mg	Polyclonal
554721	Purified NA/LE Mouse IgG1 κ Isotype Control	0.5 mg	107.3
554656	Stain Buffer (FBS)	500 mL	(none)
554657	Stain Buffer (BSA)	500 mL	(none)
567109	Purified NA/LE Mouse Anti-Human CD3	5 mg	UCHT1
567108	Purified NA/LE Mouse Anti-Human CD3	2 mg	UCHT1

Product Notices

1. Since applications vary, each investigator should titrate the reagent to obtain optimal results.
2. An isotype control should be used at the same concentration as the antibody of interest.
3. Please refer to <http://regdocs.bd.com> to access safety data sheets (SDS).
4. Please refer to wwwbdbiosciences.com/us/s/resources for technical protocols.

References

Bernard A, Boumsell L, Dausset J, Milstein C, Schlossman SF, ed. *Leucocyte Typing*. New York: Springer-Verlag; 1984:1-814. (Clone-specific: Blocking, Flow cytometry, Immunoprecipitation)

Beverley PC, Callard RE. Distinctive functional characteristics of human "T" lymphocytes defined by E rosetting or a monoclonal anti- T cell antibody. *Eur J Immunol*. 1981; 11(4):329-334. (Clone-specific)

Burns GF, Boyd AW, Beverley PC. Two monoclonal anti-human T lymphocyte antibodies have similar biologic effects and recognize the same cell surface antigen. *J Immunol*. 1982; 129(4):1451-1457. (Clone-specific: Blocking, Functional assay, Inhibition)

Knapp W. W. Knapp .. et al., ed. *Leucocyte typing IV : white cell differentiation antigens*. Oxford New York: Oxford University Press; 1989:1-1182. (Clone-specific)

Lanier LL, Allison JP, Phillips JH. Correlation of cell surface antigen expression on human thymocytes by multi-color flow cytometric analysis: implications for differentiation. *J Immunol*. 1986; 137(8):2501-2507. (Biology)

McMichael AJ. A.J. McMichael .. et al., ed. *Leucocyte typing III : white cell differentiation antigens*. Oxford New York: Oxford University Press; 1987:1-1050. (Clone-specific: Flow cytometry)

Schlossman SF, Stuart F, Schlossman .. et al., ed. *Leucocyte typing V : white cell differentiation antigens : proceedings of the fifth international workshop and conference held in Boston, USA, 3-7 November, 1993*. Oxford: Oxford University Press; 1995(Clone-specific: Functional assay)

Van Wauwe JP, Goossens JG, Beverley PC. Human T lymphocyte activation by monoclonal antibodies; OKT3, but not UCHT1, triggers mitogenesis via an interleukin 2-dependent mechanism. *J Immunol*. 1984; 133(1):129-132. (Clone-specific: Functional assay)

Zola H. *Leucocyte and stromal cell molecules : the CD markers*. Hoboken, N.J.: Wiley-Liss; 2007(Biology)