

Technical Data Sheet

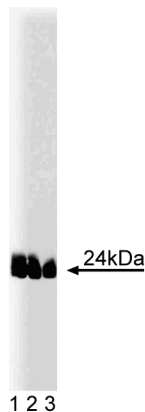
Purified Mouse Anti- Caveolin-1 (pY14)**Product Information**

Material Number:	611338
Size:	50 µg
Concentration:	250 µg/ml
Clone:	56/Caveolin (pY14)
Immunogen:	Phosphorylated Human Caveolin-1 (Y14) Peptide
Isotype:	Mouse IgG1
Reactivity:	QC Testing: Human Tested in Development: Mouse, Rat
Target MW:	21-24 kDa
Storage Buffer:	Aqueous buffered solution containing BSA, glycerol, and ≤0.09% sodium azide.

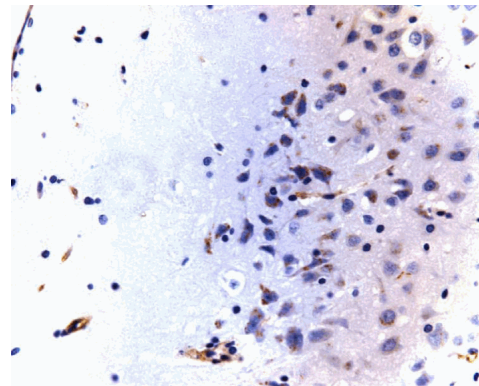
Description

Caveolin (VIP21) localizes to non-clathrin membrane invaginations (caveolae) on the inner surface of the plasma membrane. In addition, it is present in the trans-Golgi network (TGN) and in apically and basolaterally destined transport vesicles. Caveolin is a transmembrane adaptor molecule that recognizes GPI-linked proteins and interacts with downstream cytoplasmic signaling molecules, such as src-family tyrosine kinases and hetero-trimeric G proteins. Caveolin forms large lipid-binding oligomers, which are thought to play a role in caveolae formation. It may also function as a scaffolding protein, which organizes signaling molecules. This functional role is supported by the fact that caveolin interacts directly with inactive ras and G-protein α subunits. Phosphorylation of caveolin at Tyr-14, Ser-88, and other residues in v-src transformed cells leads to flattening, aggregation, and fusion of caveolae and caveolae-derived vesicles. Thus, caveolin is the principle protein of caveolae and may be involved in v-src mediated cellular transformation.

This antibody has also been reported to cross-react to paxillin in mouse embryonic fibroblasts (MEF), observable to migrate at ~ 68 kDa .



Western blot analysis of caveolin-1 (pY14) on lysates from A431 cells (Human epithelial carcinoma; ATCC CRL-1555) treated with 100 ng/mL EGF. Lane 1: 1:1000, lane 2: 1:2000, lane 3: 1:4000 dilution of the mouse anti-caveolin-1 (pY14) antibody.



Immunohistochemistry: Zinc-fixed paraffin-embedded rat brain section stained with the mouse anti-caveolin-1 (pY14) antibody (40X magnification).

Preparation and Storage

Store undiluted at -20°C.

The monoclonal antibody was purified from tissue culture supernatant or ascites by affinity chromatography.

BD Biosciences

bdbiosciences.com

United States	Canada	Europe	Japan	Asia Pacific	Latin America/Caribbean
877.232.8995	888.259.0187	32.53.720.550	0120.8555.90	65.6861.0633	55.11.5185.9995

For country-specific contact information, visit bdbiosciences.com/how_to_order/

Conditions: The information disclosed herein is not to be construed as a recommendation to use the above product in violation of any patents. BD Biosciences will not be held responsible for patent infringement or other violations that may occur with the use of our products. Purchase does not include or carry any right to resell or transfer this product either as a stand-alone product or as a component of another product. Any use of this product other than the permitted use without the express written authorization of Becton Dickinson and Company is strictly prohibited.

For Research Use Only. Not for use in diagnostic or therapeutic procedures. Not for resale.

BD, BD Logo and all other trademarks are the property of Becton, Dickinson and Company. ©2008 BD



Application Notes

Application

Western blot	Routinely Tested
Immunohistochemistry-zinc-fixed	Tested During Development
Immunofluorescence	Not Recommended

Recommended Assay Procedure:

Western blot: Please refer to http://www.bdbiosciences.com/pharmingen/protocols/Western_Blotting.shtml

Suggested Companion Products

Catalog Number	Name	Size	Clone
554002	HRP Goat Anti-Mouse Ig	1.0 ml	(none)
611448	A431 + EGF Cell Lysate	500 µg	(none)

Product Notices

1. Since applications vary, each investigator should titrate the reagent to obtain optimal results.
2. Source of all serum proteins is from USDA inspected abattoirs located in the United States.
3. Caution: Sodium azide yields highly toxic hydrazoic acid under acidic conditions. Dilute azide compounds in running water before discarding to avoid accumulation of potentially explosive deposits in plumbing.
4. Please refer to www.bdbiosciences.com/pharmingen/protocols for technical protocols.

References

- Glennay JR, Soppet D. Sequence and expression of caveolin, a protein component of caveolae plasma membrane domains phosphorylated on tyrosine in Rous sarcoma virus-transformed fibroblasts. *Proc Natl Acad Sci U S A.* 1992; 89(21):10517-10521.(Biology)
- Hill M, Scherbakov N, Schiefermeier N, Baran J, Hancock J, Huber L, Parton R, Parat M. Reassessing the role of phosphocaveolin-1 in cell adhesion and migration. *Traffic.* 2007; 8:1695-1705.(Clone-specific)
- Labrecque L, Royall I, Surprenant DS, Patterson C, Gingras D, Béliveau R. Regulation of vascular endothelial growth factor receptor-2 activity by caveolin-1 and plasma membrane cholesterol. *Mol Biol Cell.* 2003; 14(1):334-347.(Biology: Western blot)
- Lee H, Volonte D, Galbiati F, et al. Constitutive and growth factor-regulated phosphorylation of caveolin-1 occurs at the same site (Tyr-14) in vivo: identification of a c-Src/Cav-1/Grb7 signaling cassette. *Mol Endocrinol.* 2000; 14(11):1750-1775.(Biology: Immunofluorescence, Western blot)
- Ushio-Fukai M, Hilenski L, Santanam N, et al. Cholesterol depletion inhibits epidermal growth factor receptor transactivation by angiotensin II in vascular smooth muscle cells: role of cholesterol-rich microdomains and focal adhesions in angiotensin II signaling. *J Biol Chem.* 2001; 276(51):48269-48275.(Biology: Immunofluorescence, Western blot)
- Volonté D, Galbiati F, Pestell RG, Lisanti MP. Cellular stress induces the tyrosine phosphorylation of caveolin-1 (Tyr(14)) via activation of p38 mitogen-activated protein kinase and c-Src kinase. Evidence for caveolae, the actin cytoskeleton, and focal adhesions as mechanical sensors of osmotic stress. *J Biol Chem.* 2001; 276(11):8094-8103.(Biology: Immunofluorescence, Western blot)