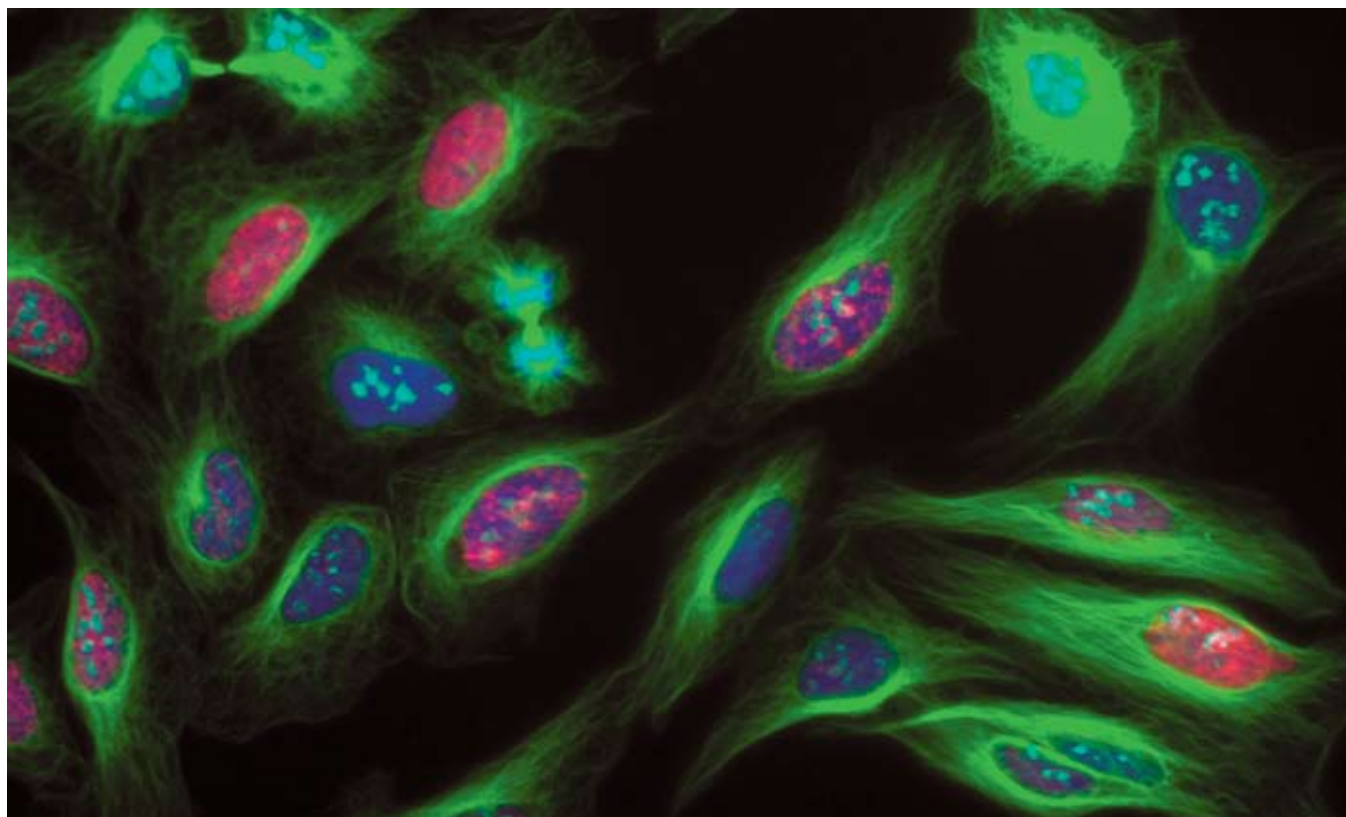


BD Biosciences

Screening and Development of Antibodies for Use in Cell-Based Assays Using Immunofluorescence Microscopy



Introduction

High content imaging is rapidly becoming a mainstay in pharmaceutical and life science research laboratories.¹ The power of imaging resides in its ability to measure not only fluorescence intensity changes within cells, but also proximal and temporal relationships and morphological features. In recent years, the availability of a new generation of automated imaging platforms has created a unique opportunity to develop novel cell-based assays.^{2,3,4} High content microscopy has also been advanced by the abundant use of antibodies in immunofluorescent applications. These reagents have enabled high resolution localization of important molecular targets in individual cells. For example, antibodies can be used to detect specific stages in apoptosis, in the activation of signaling cascades, the organization or reorganization of cellular structures and identification of stages in the cell cycle. However, many of the antibodies currently available have not been specifically tested for use in automated imaging applications. In addition, the potential of high content screening relies on the multiplexing of cellular information. The ability to do this however, is often limited when using standard unlabeled primary antibodies with labeled secondary antibodies due to species cross-reactivity.

To facilitate the use of antibodies for imaging applications, BD Biosciences embarked on a screening process using automated imaging to evaluate a large library of monoclonal antibodies for utility in bioimaging. The library of antibodies included specificities that recognize proteins involved in cell signaling, cell cycle, apoptosis and cancer. Antibodies were tested using cell lines and methods that are relevant to high content screening applications on automated imaging platforms. Specific criteria regarding signal to noise, sub-cellular localization and other important parameters were used to qualify reagents. Two distinct BD Bioimaging Certified™ reagent product lines have resulted from this antibody screen. The first is a continually expanding collection of greater than 200 unlabeled primary antibodies that have been shown to have general utility in bioimaging applications. A subset of these reagents has been developed into primary conjugated antibodies in order to truly enable high content screening using antibody multiplexing. These reagents, combined with an automated imaging platform such as the BD Pathway™ Bioimager 415, 435 or 855 can enable rapid development of novel cell-based assays.

BD Biosciences

15010 Broschart Road, Rockville, MD 20850

For more information visit bdbiosciences.com/bioimaging

toll free: 800.245.2614 (US)

301.340.7320 (Outside the US)



Helping all people
live healthy lives

Methods

Screening of Purified Antibodies

Antibodies from the BD Pharmingen library were screened for utility in bioimaging applications. The antibodies recognized proteins in different areas of cell biology that included cell signaling, apoptosis, cell cycle and cancer. For ubiquitously expressed proteins, the antibodies were screened on three different cell lines routinely used in high content imaging applications. HeLa (human cervical carcinoma), A549 (human lung carcinoma) or U-2 OS (human osteosarcoma) cells were seeded at approximately 10,000 cells/well in 96-well clear bottom imaging tissue culture plates (Cat. No. 353219) optimized for automated imaging applications. Eighteen hours later, cells were either treated with an appropriate agonist/antagonist and then fixed and permeabilized or if not treated, immediately fixed and permeabilized by each of the following two methods:

Fixation

1. Remove culture media from wells.
2. Add 100 μ l per well freshly prepared 3.7% formaldehyde (Sigma, F-1268) diluted in 1x phosphate buffered saline (PBS) and pre-warmed to 37°C.
3. Incubate at room temperature for 10 minutes.
4. Remove the fixation solution and drain the residual liquid by inverting the plate briefly onto absorbent paper.
5. Wash twice by adding 100 μ l per well of 1x PBS.
6. Proceed to either the Triton® X-100 or Methanol permeabilization steps described below.

Triton® X-100 Permeabilization

1. Remove 1x PBS and add 100 μ l per well of a 0.1% Triton® X-100 (Sigma, T-9284) solution diluted in 1x PBS.
2. Incubate at room temperature for 5 minutes.
3. Remove the permeabilization solution and drain the residual liquid.
4. Wash twice with 1x PBS.
5. Proceed to the Blocking step.

Methanol Permeabilization

1. Remove 1x PBS and add 100 μ l per well of a chilled 90% methanol (-20°C) solution diluted in water.
2. Incubate at room temperature for 5 minutes.
3. Remove the permeabilization solution and drain the residual liquid.
4. Wash twice with 1x PBS.
5. Proceed to the Blocking step.

Blocking

1. Remove 1x PBS and add 100 μ l per well of 1x PBS supplemented with 3% fetal bovine serum (FBS).
2. Incubate at room temperature for 30 minutes.
3. Proceed to the Primary Antibody Staining step.

Primary Antibody Staining

1. Remove the blocking solution and add 50 μ l per well of primary antibody diluted to the appropriate concentration in blocking solution.
2. Incubate at room temperature for 1 hour.
3. Remove primary antibody solution.
4. Wash three times with 1x PBS.
5. Proceed with the Secondary Antibody Staining.

Secondary Antibody Staining

1. Remove the 1x PBS and add 50 μ l per well of diluted secondary antibody. All antibodies were diluted in blocking solution to 0.05 mg/ml. Several different second step reagents were used, including FITC goat anti-mouse IgG (Cat. No. 554001), APC goat anti-mouse IgG (Cat. No. 550826), Alexa Fluor® 555 goat anti-mouse IgG (Invitrogen, A21424) and Alexa Fluor® 488 goat anti-mouse IgG (Invitrogen, A11029).
2. Incubate at room temperature for 1 hour in the dark.
3. Remove secondary antibody solution.
4. Wash three times with 1x PBS.
5. Add 100 μ l per well of 1x PBS containing 2 μ g/ml Hoechst 33342 (Invitrogen, H3570).
6. Cover the plate and let stand protected from light for 15 to 30 minutes.
7. Image plates or store at 4°C in the dark prior to imaging.

Screening of directly conjugated antibodies

The same procedure as outlined above with one alteration was followed. The conjugated antibodies were used in the primary antibody staining step. Unless otherwise stated, all data shown used the conjugated antibodies at their predetermined optimal concentration. After conjugated antibody binding, cells were washed, Hoechst dye was added and the samples were imaged.

Modified staining procedure for cleaved (active) caspase-3

1. Do not remove media from wells. Fix cells by adding an equal volume of 7.4% pre-warmed formaldehyde (3.7% final concentration) to media and incubate for 1 hour at room temperature.
2. Remove the formaldehyde solution and drain the residual liquid.
3. Wash once with 1x PBS.
4. Add 100 μ l per well of 90% methanol (-20°C) and incubate for 10 min at -20°C.
5. Remove methanol and drain residual liquid.
6. Wash twice with 1x PBS.
7. Add 100 μ l per well of 1x PBS containing 5% goat serum and 0.3% Triton® X-100, and incubate for one hour at room temperature.
8. Add 50 μ l per well purified anti-cleaved caspase-3 (Cat. No. 559565), diluted to 1.25 μ g/ml in blocking buffer, and incubate overnight at 4°C.
9. Wash three times with 100 μ l per well 1x PBS.
10. Add 50 μ l per well Alexa Fluor® 488 goat anti-rabbit IgG secondary antibody (Invitrogen, A11008).
11. Incubate at room temperature for 1 hour in the dark.
12. Remove secondary antibody solution.
13. Wash three times with 1x PBS.
14. Add 100 μ l per well of 1x PBS containing 2 μ g/ml Hoechst 33342 as described above and image.

Differentiation and staining procedures for PC12 cells

1. Coat the wells of a 96-well clear bottom imaging tissue culture plate with BD type 1 rat tail collagen (Cat. No. 354236).
2. Seed PC12 cells in DMEM with 10% FBS, 5% horse serum and 1% pen/strep, at approximately 15,000 cells/well.
3. After 24 hours replace medium with differentiation medium

(DMEM with 0.1% FBS, 0.05% horse serum) containing two fold dilutions of nerve growth factor (NGF, Calbiochem, 420298) ranging from 400 to 6.25 ng/ml along with untreated control. Replenish medium every third day for ten days.

4. On day 10, do not remove media from wells. Fix cells by adding a one-third volume of 11.1% pre-warmed formaldehyde (3.7% final concentration) to media and incubate for 20 minutes at room temperature.
5. Remove the fixation solution.
6. Wash twice with 1x PBS.
7. Proceed with the Triton® X-100 permeabilization step outlined above.
8. Wash once with 1x PBS
9. Cells were then stained using either the primary/conjugated secondary or the conjugated primary antibody staining procedures outlined above.

Staining procedure for paraffin embedded tissue sections

1. Deparaffinize sections in two changes of xylene (Fisher Scientific, 05079-4) followed by two changes in 100% alcohol and two washes in 1x PBS.
2. Submerge sections in BD™ Retrieval A (Cat. No. 550524) and heat in a decloaking chamber (pressure cooker, Biocare Medical, DC2002) to 121°F for 10 minutes (approximate pressure of 17 psi).
3. Allow to cool slowly in the decloaking chamber to room temperature.

4. Wash twice with 1x PBS.
5. Stain simultaneously with Alexa Fluor® 488 anti-BrdU (Cat. No. 558613), Alexa Fluor® 647 anti- β -tubulin (Cat. No. 558606) and Alexa Fluor® 555 anti-actin (Cat. No. 558657) for two hours at room temperature in the dark.
6. Wash twice with 1x PBS and incubate with 1x PBS containing 2 μ g/ml Hoechst for 30 minutes in the dark.
7. Wash once with 1x PBS.
8. Seal sections under a cover slip using Aquamount (Fisher Scientific, NC9839881) and image.

Imaging and Analysis

Cells were imaged on either a BD Pathway™ 855 or 435 Bioimager using a 20x (0.75 NA) objective. Image and data analysis was performed using BD Pathway software; cell populations were analyzed for nuclear and/or cytoplasmic fluorescence intensity.

Results and Discussion

Identification of BD Bioimaging Certified™ Primary Antibodies

All antibodies were originally screened at 1 μ g per well. All second step reagents were used at 0.25 μ g per well. Typically, 47 antibodies were screened in duplicate on a 96-well bioimaging plate with two wells serving as negative controls. Therefore, to encompass the three cell lines and the two permeabilization

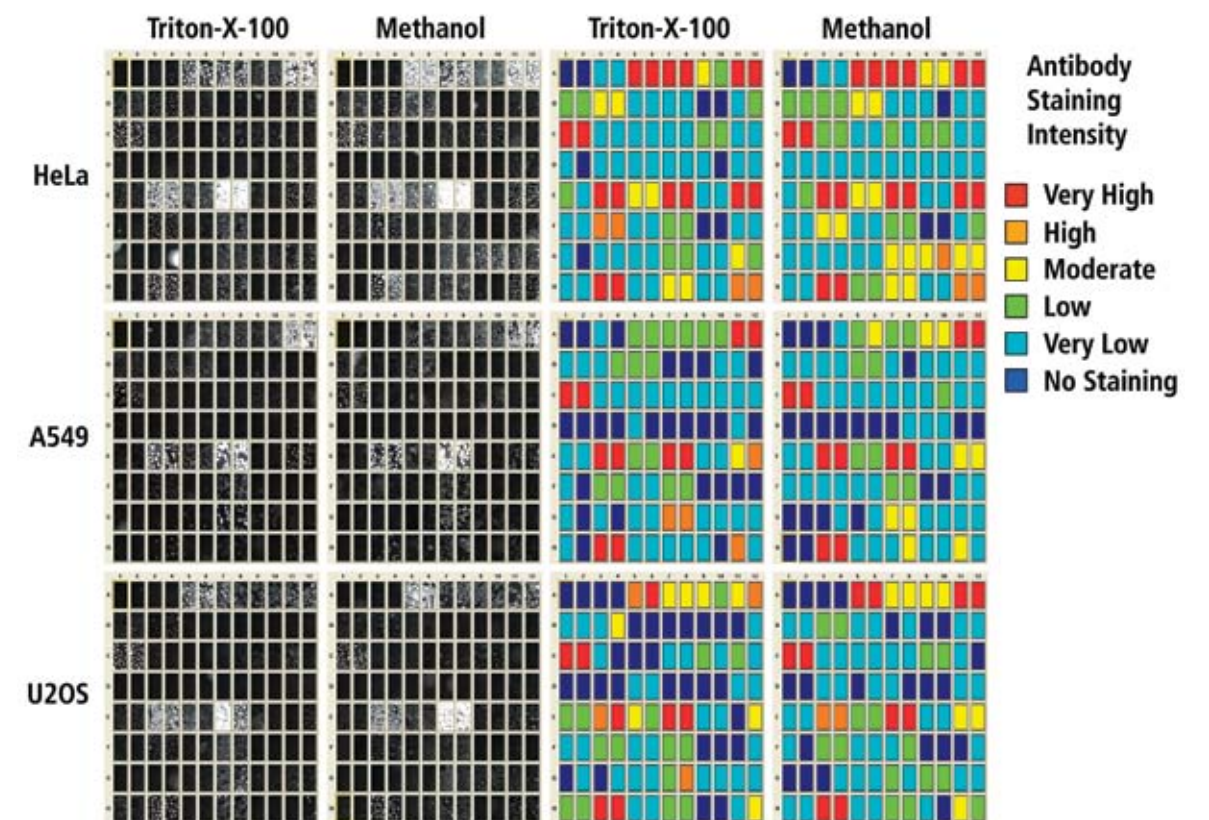


Figure 1. Purified antibody screen using FITC goat anti-mouse IgG second step reagent. Representative data from a 47 antibody screen (100 ms exposure) are shown in the left two columns. The cell lines and fix/perme procedures used are indicated. Data classification software was used to determine the level of antibody staining intensity over negative controls, based on user defined intensity thresholds. The individual wells were then scored and classified into six groups ranging from very high staining intensity (red) to no staining (blue) for both the nuclear and cytoplasmic regions. Heat maps of the corresponding cytoplasmic staining intensities are shown in the right two columns.

methods, six 96-well plates were required for each set of 47 antibodies (**Figure 1**). In anticipation of a broad range of fluorescent intensities, three exposures of each well were taken, 30, 100 and 300 milliseconds (ms). If the staining intensity for a given antibody was saturating at the lowest exposure time, a titration series of the purified antibody was performed to determine the optimal concentration.

Many of the antibodies screened recognized ubiquitously expressed proteins that were not expected to show an altered phenotype upon cell activation. For these proteins, if the subcellular location was correct (based on the literature) and the signal was at least two fold over background, the antibody was classified as a BD Bioimaging Certified™ reagent (**Figure 2**, (http://www.bdbiosciences.com/features/products/display_product.php?keyID=389)). However, some antibodies recognized

proteins that were expected to redistribute upon cell stimulation or they were expected to recognize phospho-specific or cleaved epitopes. For these antibodies, testing in an appropriate cell model system was required. Two such examples, one for active caspase-3 and the other for phospho-STAT1 and 3, are shown below.

Detection of cleaved (active) caspase-3.

The caspase family of cysteine proteases plays a key role in apoptosis and inflammation.⁵ Caspase-3 is a key protease activated during the early stages of apoptosis. Like other members of the caspase family, it is synthesized as an inactive proenzyme that is processed in cells undergoing apoptosis. Active caspase-3 proteolytically cleaves and activates other caspases, as well as other relevant targets in the cytoplasm and

in the nucleus.⁶ Anti-cleaved caspase-3 (Cat. No. 559565) was used to detect active caspase-3 in HeLa cells that were treated with increasing concentrations of staurosporine to induce apoptosis (**Figure 3**). As the concentration of staurosporine increased so too did the percent cells staining positive for active caspase-3, as seen by the increase in cells pseudo-colored green in panels B and C of **Figure 3**. This monoclonal antibody therefore provided a means to detect early apoptotic events in a population of cells by image analysis. The validated reagent provides consistent data from which dose response curves and EC₅₀ values can be calculated. Our data supported findings by Jessel et al. (2002) who report an EC₅₀ of 200nM for staurosporine.⁷

Detection of activated STAT1 and STAT3.

STAT proteins function as both cytoplasmic Signal Transducers

and as nuclear Activators of Transcription. STATs respond to a wide array of stimuli including cytokines and growth factors.^{8,9} In response to interferon alpha (IFN- α) treatment, STAT1 and STAT3 become tyrosine-phosphorylated, form homodimers and migrate to the nucleus where they subsequently direct the transcription of IFN- α responsive genes. Anti-phospho STAT1 (pY701, Cat. No. 612233) and anti-phospho STAT3 (pY705, Cat. No. 612357) were used to detect increased phosphorylation of these STAT proteins in A549 cells that were treated with increasing concentrations of IFN- α (**Figure 4**). Panels A, B and C show phospho-STAT1 staining with increasing concentrations of IFN- α . Panel A shows a low level of constitutive phospho-STAT1 staining while B and C with 2.7 ng/ml and 100 ng/ml of cytokine, respectively, show increased nuclear staining intensity; suggesting that the percent STAT1 molecules activated increased with IFN- α concentration. The same was true for

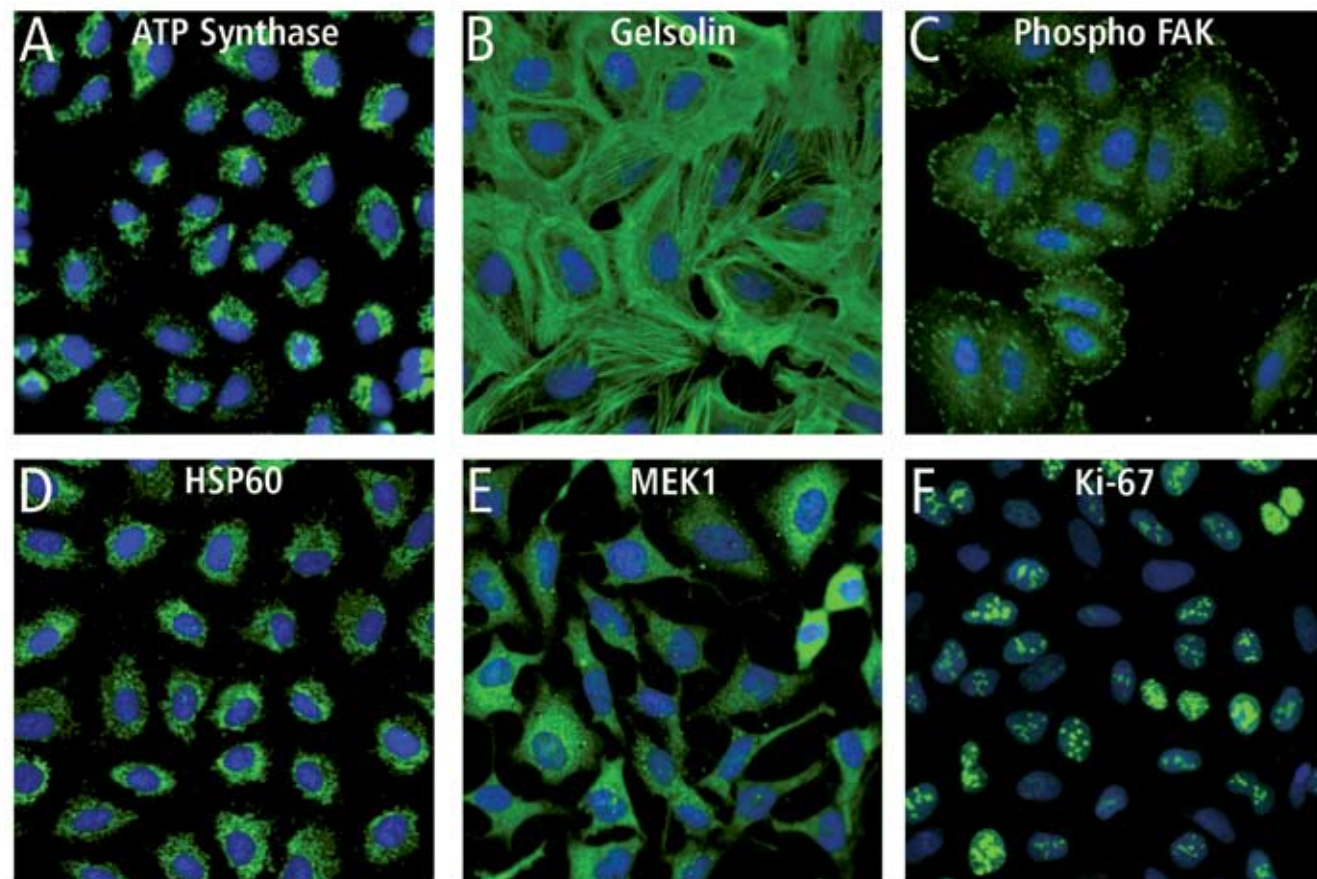


Figure 2. Staining patterns of purified antibodies identified as Bioimaging Certified reagents. All images were acquired with a 20x (0.75 NA) objective. Hoechst 33342 staining is pseudo-colored blue and antibody specific staining is pseudo-colored green. Images A and B show A549 cells stained with purified anti-ATP Synthase (0.5 μ g/well, Cat. No. 612518) and anti-Gelsolin (0.25 μ g/well, Cat. No. 610412), respectively. Cells were prepared using the methanol permeabilization method and the second step reagent was FITC goat anti-mouse IgG. Images C and D show A549 cells stained with purified anti-phospho-FAK (Y397, 1 μ g/well, Cat. No. 611806) and anti-HSP60 (0.06 μ g/well, Cat. No. 611562), respectively. Cells were prepared using the Triton® X-100 permeabilization method and the second step reagent was Alexa Fluor® 488 goat anti-mouse IgG. Images E and F show HeLa cells stained with purified anti-MEK1 (0.5 μ g/well, Cat. No. 610121) and anti-Ki-67 (0.5 μ g/well, Cat. No. 556003), respectively. Cells were prepared using the methanol permeabilization method and the second step reagent was FITC goat anti-mouse IgG for image E and Alexa Fluor® 555 goat anti-mouse IgG for image F.

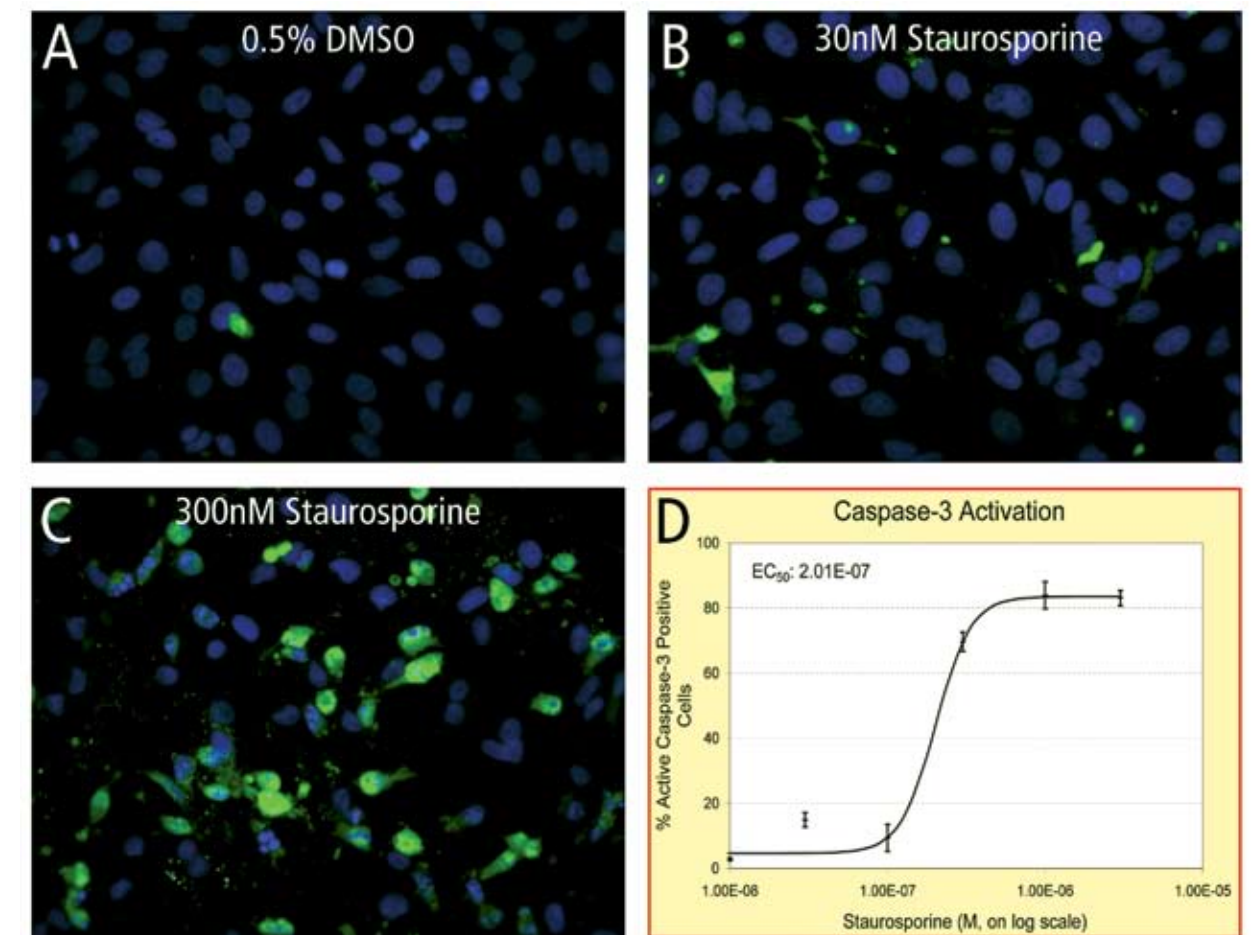
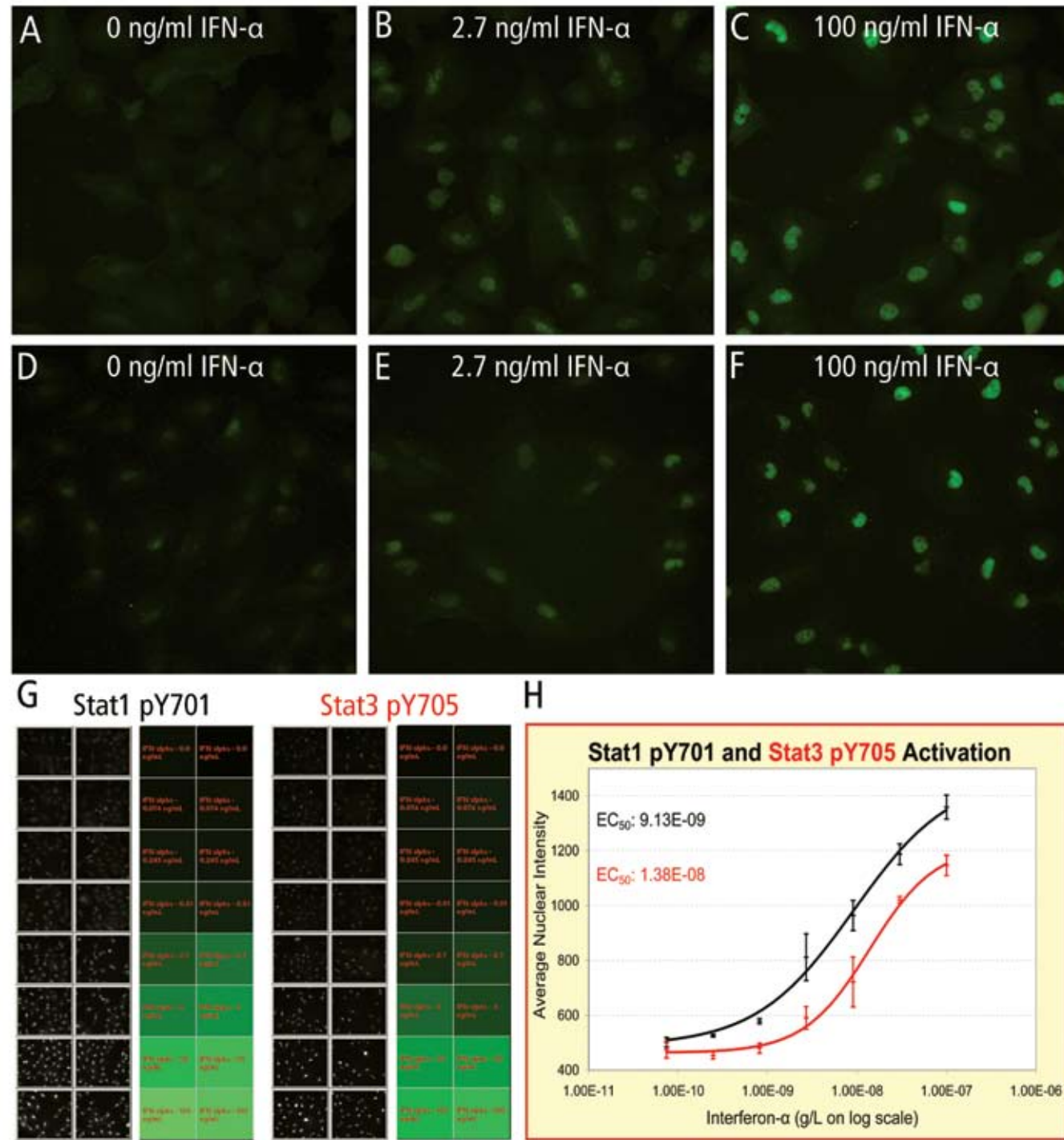


Figure 3. Dose response of caspase-3 activation. HeLa cells were plated as described in the Methods section. Eighteen hours later, cells were exposed to increasing concentrations of staurosporine for 4 hours. After the treatment, cells were stained with anti-active caspase-3 antibody, as described in the Methods section, and imaged with a 20x (0.75 NA) objective. Merged images are shown, nuclei are pseudo-colored blue and active caspase-3 staining is pseudo-colored green. Panel A shows cells that were treated with vehicle alone (Control), panel B shows cells treated with 30 nM staurosporine and panel C shows cells treated with 300 nM staurosporine. For a more complete analysis, the active caspase-3 fluorescence intensity values were analyzed using the BD Pathway software. Control cell intensities were used to set a threshold for the treated cells and a dose response curve for the titration series plotting the percent cells above the threshold was generated (Panel D). Data points from n=2 wells are shown as the mean \pm SEM.



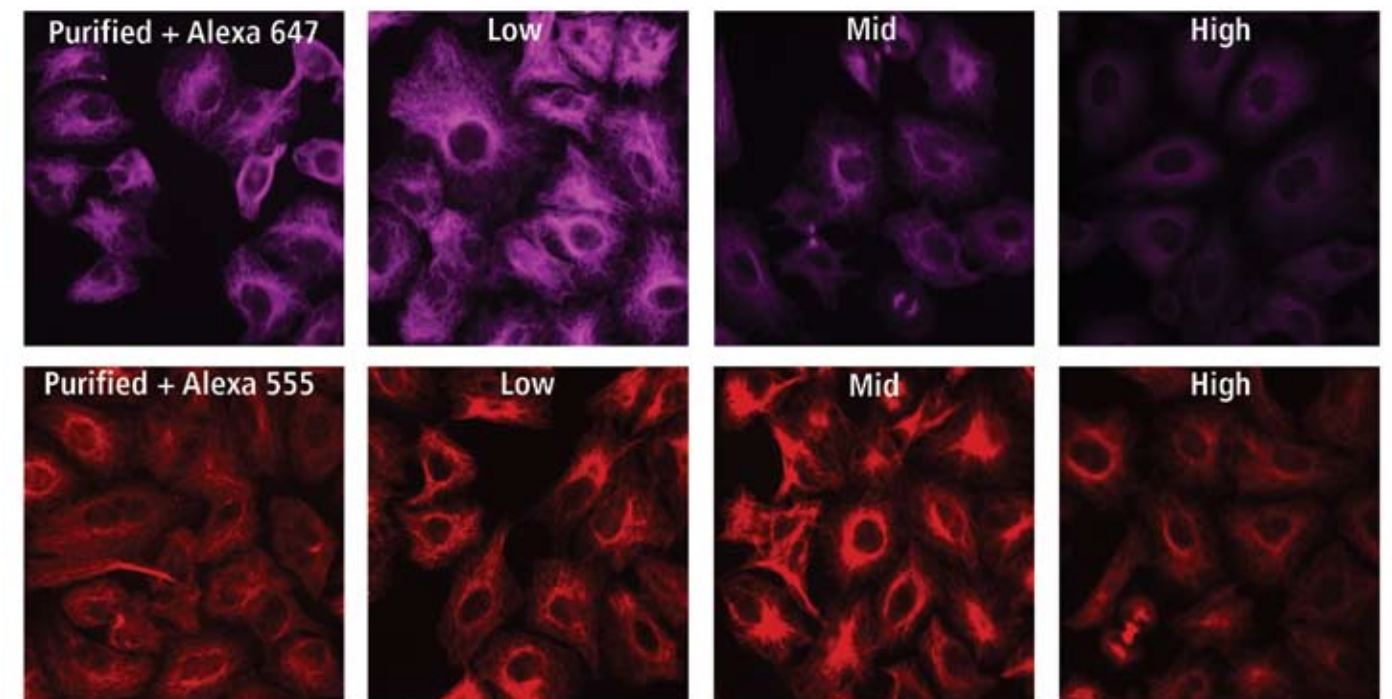
phospho-STAT3 staining as shown in panels D, E and F. Both monoclonal antibodies were therefore able to detect increased phosphorylation of the STAT proteins in response to IFN- α in a dose dependant manner.

Development of Primary Conjugated Antibodies

Primary conjugated antibodies, labeled with dyes suitable for high content imaging platforms, greatly simplify the development and implementation of multiplexed assays. In addition, the use of primary conjugated antibodies eliminates the secondary antibody staining step thereby greatly reducing the number of wash steps. Once purified antibodies were qualified as BD Bioimaging Certified™ reagents for use in high content analysis, as well as other imaging applications, a subset of antibodies were selected for development as primary conjugated antibodies. To facilitate multiplexing, the selected antibodies were conjugated to multiple dyes (Alexa Fluor® dyes 488, 555, and 647) and then tested using the same methods used to screen the primary purified antibodies.

The fluorophore:antibody (F/P) ratio used for conjugation can dramatically affect the signal to noise (S/N) ratio. In addition, the reactivity of a conjugated antibody can vary depending on the dye it is conjugated to. This makes it essential to empirically

determine the optimal F/P ratio for each particular antibody/dye combination. Therefore, to ensure development of optimal high content imaging reagents, each dye was conjugated to the antibody at three different F/P ratios, high, moderate and low. During initial testing, conjugated antibody staining was compared to that of the purified with a second step reagent and was analyzed for correct sub-cellular location and S/N ratio. Based on these initial results, the best F/P ratio was chosen for further development. Purified anti- β -tubulin, mouse monoclonal 5H1 (Cat. No. 556321) is an example of a purified clone that passed the criteria for a BD Bioimaging Certified reagent and was subsequently chosen for conjugation to Alexa Fluor® dyes at three different F/P ratios for each dye. The nine conjugates were then tested to see if they stained appropriately. Different trends were observed for the different dyes (Figure 5). For the Alexa Fluor® 647 conjugates, the lowest F/P ratio gave the brightest signal while the highest F/P ratio gave the lowest signal. For the Alexa Fluor® 555 conjugates, the lowest F/P ratio gave an intermediate signal, the middle F/P ratio gave the highest signal and the highest F/P ratio gave the lowest signal. The Alexa Fluor® 488 conjugates gave the lowest signal at the lowest F/P ratio and as the F/P ratio increased, there was a concomitant increase in



signal intensity (data not shown). Therefore, for this particular antibody, each Alexa Fluor® dye had a different optimal F/P ratio. Testing of other conjugated antibodies showed that the optimal F/P ratio also differed for each and that there was no consistent trend for any of the three dyes tested.

The use of directly conjugated antibodies dramatically reduces the number of wash steps needed during plate processing. This attribute can be particularly advantageous when performing assays on fragile cell types such as differentiated neurons which are prone to breakage due to pipeting shear force. **Figure 6** shows PC12 cells differentiated with increasing concentrations of nerve growth factor (NGF). At higher NGF concentrations (from 50 ng/ml upwards) very extensive neural networks are formed. These more complex networks are especially prone to aspiration/dispensing shear force and were negatively impacted when a two step antibody staining protocol was used to detect the neurites. Neural networks were preserved when a primary conjugate was used for detection.

Example of a multiplexed assay.

Using conjugated primary antibodies for imaging provides users the flexibility to mix and match specificities and obtain multiple data points per well. To demonstrate this, Alexa Fluor® 647 anti- β -tubulin (Cat. No. 558606) and Alexa Fluor® 555 anti-phospho-Histone H3 (S28, Cat. No. 558613) were used to monitor the effects of colcemid on microtubules and the phases of the cell cycle in U-2 OS cells. Microtubules, which are composed of tubulin, are part of the eukaryotic cytoskeleton and are essential for cell division since they form the mitotic spindle which in turn, directs chromosome segregation. Colcemid disrupts spindle formation by inhibiting microtubule polymerization. Without spindles, chromosomal segregation can not occur and consequently, cells accumulate in M phase. The DNA binding protein Histone H3 is specifically phosphorylated at serine 28 during the early stages of mitosis and is often used as a marker for M phase cells. Therefore, disruption of microtubules and the accumulation of cells in M phase was monitored using anti- β -tubulin¹⁰ and anti-phospho-Histone H3 (S28)¹¹ conjugated antibodies, respectively (**Figure 7**). The

β -tubulin specific signal intensity decreased as the concentration of colcemid increased, indicating a decline in microtubules (analysis shown in panel D). Conversely, for phospho-Histone H3, as the concentration of colcemid increased the percent cells positive for phospho Histone H3 increased, indicating an increased percent cells blocked in M phase (analysis shown in panel E). To determine if there was indeed a correlation between microtubule disruption and accumulation in M phase the dose response curves for anti- β -tubulin and phospho-Histone H3 were compared (shown in panel F). At low doses of colcemid, the percent cells positive for β -tubulin is close to 100% and the percent cells in M phase is below 5%. However, as the colcemid concentration increases, the percent cells positive for β -tubulin decreases while the percent cells in M phase increases. At colcemid concentrations above 15 ng/ml, the percent cells positive for β -tubulin approaches background levels and the percent cells accumulating in M phase reaches its maximum (40% to 50%), indicating the dependence of the cell cycle on microtubules.

In-Situ detection using primary conjugates

In-Situ staining applications enable the study of defined cells within the micro-environment of a tissue. Using directly conjugated antibodies, multiple targets within a tissue sample can be simultaneously detected with relative ease. In the example shown in **Figure 8**, mouse gut was used as a target tissue to identify proliferating cells using BrdU. BrdU, a thymidine analogue, is incorporated into the DNA of cells progressing through S phase and is identified using an anti-BrdU antibody. Therefore, control mice were compared to mice that had received an intra-peritoneal injection of 1 mg BrdU 24 hours prior to sacrifice. Paraffin embedded gut sections were then simultaneously stained with Alexa Fluor® 488 anti-BrdU (Cat. No. 558599), Alexa Fluor® 647 anti- β -tubulin and Alexa Fluor® 555 anti-actin (Cat. No. 558622). The anti-BrdU antibody identified proliferating cells only in BrdU treated mice (**Figure 8**). In addition, the anti-actin antibody identified the smooth muscle of the small intestine while the anti- β -tubulin antibody identified β -tubulin in all cells but the stain was particularly useful in the identification of the columnar cells.

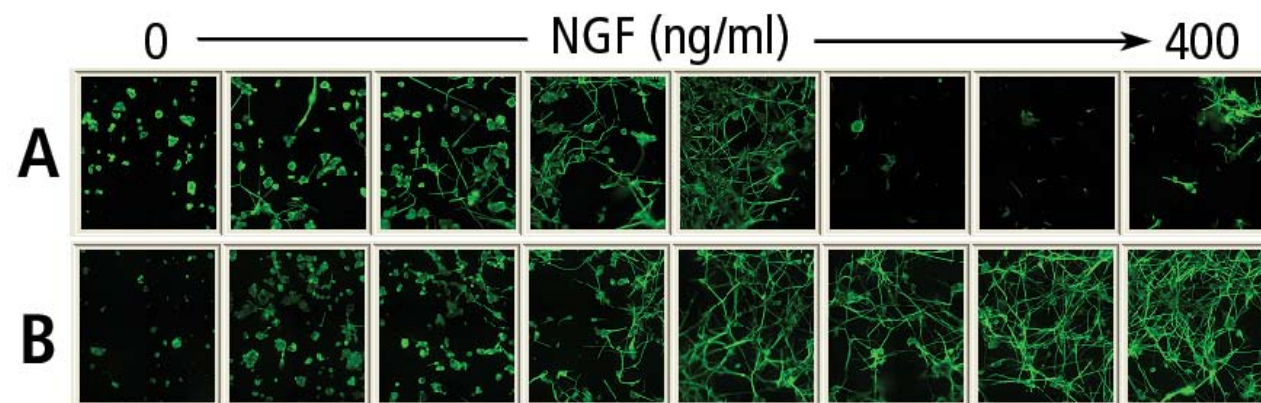


Figure 6. Comparison of the conventional two step staining procedure to the one step procedure using a primary conjugated antibody. PC12 cells were differentiated into neurons as described in the Methods section. Panel A shows cells stained using purified anti- β -tubulin and Alexa Fluor® 488 conjugated goat anti-mouse IgM (Invitrogen, A21042) second step reagent while panel B shows cells stained with Alexa Fluor® 488 conjugated anti- β -tubulin (Cat. No. 558605). Images were captured using a 20x (0.75 NA) objective and β -tubulin staining is pseudo-colored green.

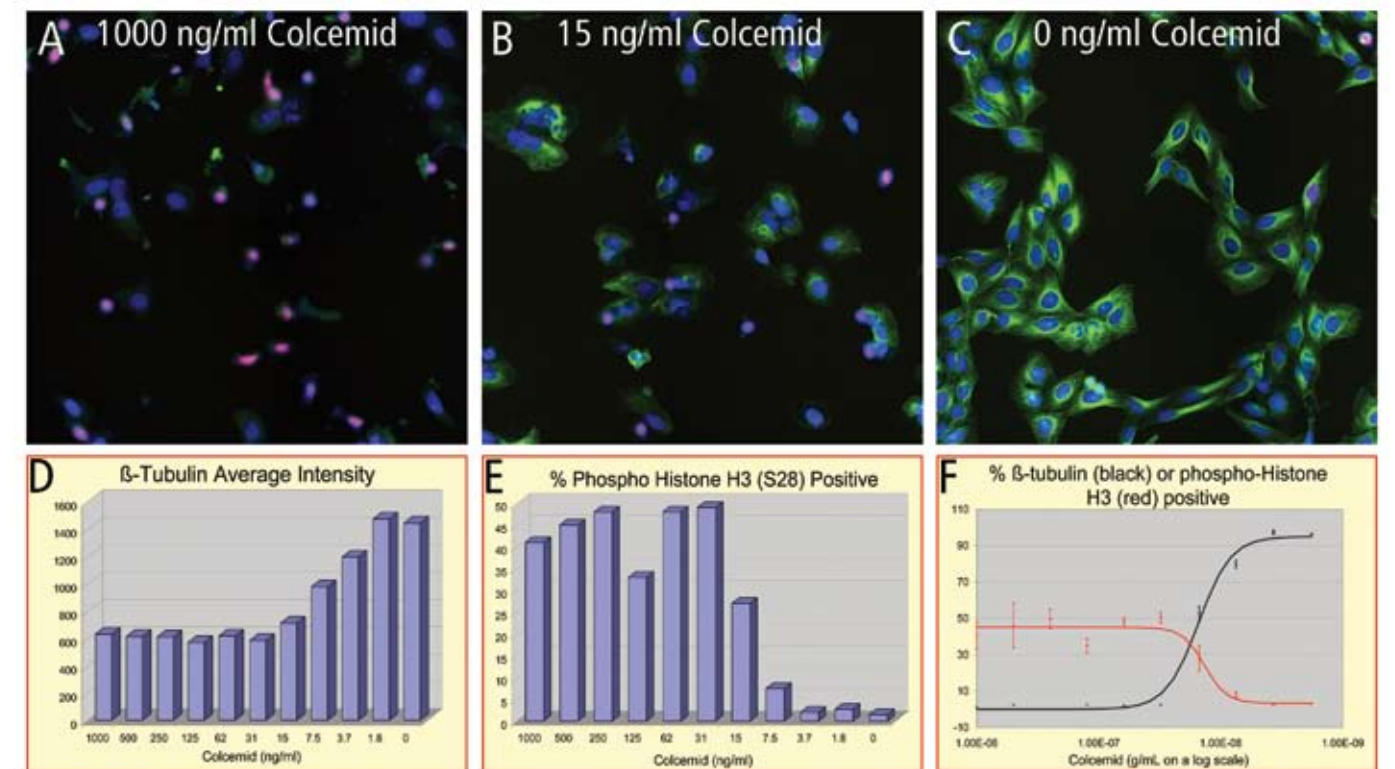


Figure 7. Effects of colcemid on microtubules and cell cycle. U-2 OS cells were plated as described in the Methods section. After overnight culture, cells were treated with increasing concentrations of colcemid, or media (control) for four hours and then fixed and permeabilized using the methanol procedure. Cells were then stained with Alexa Fluor® 647 anti- β -tubulin and Alexa Fluor® 555 anti-phospho-Histone H3 simultaneously, washed and stained with Hoechst 33342 before imaging. Images were captured using a 20x (0.75 NA) objective. Hoechst staining is pseudo-colored blue, β -tubulin staining is pseudo-colored green and phospho-Histone H3 staining is pseudo-colored red. Colocalization of the pseudo-colored phospho-Histone H3 and Hoechst stains is seen as purple in the images. Cells in panel A were exposed to 1000 ng/ml of colcemid, those in panel B to 15 ng/ml of colcemid and those in panel C were controls. The data in panels D, E and F were generated using BD Pathway software analysis tools. For β -tubulin (panels D and F), the cytoplasmic intensity was measured using an 8 pixel ring dilated out from the nuclear mask (identified by Hoechst staining). For phospho-Histone H3 (panel E), the data is reported as the percent cells positive above a user defined threshold that was based on cells negative for the phospho-Histone H3 stain. In Panel F, the phospho-Histone H3 data (red) was generated as for panel E and for β -tubulin (black), the percent cells positive was calculated using signal intensity above a user defined threshold based on β -tubulin negative cells (high drug treatment). Bar graphs are shown as the mean from n=2 wells. Dose response values are shown as the mean from n=2 wells \pm SEM.

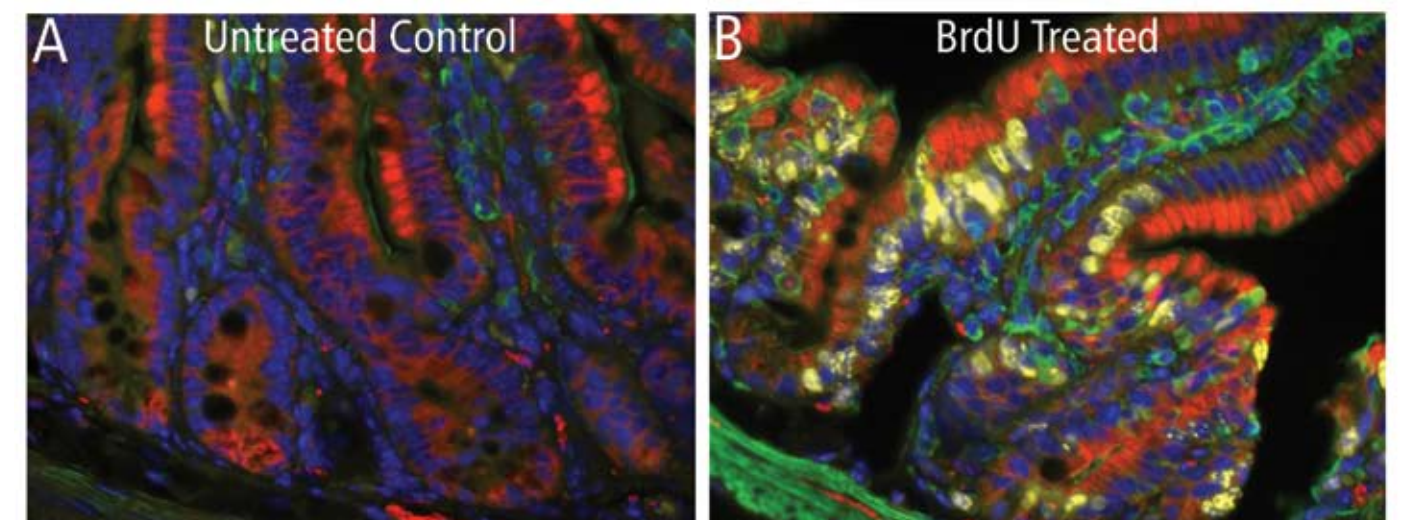


Figure 8. Immuno staining of paraffin embedded mouse gut sections with primary conjugated antibodies. Gastrointestinal sections were stained as described in the Methods section. Images were captured on a BD Pathway 435 bioimager as a 2x2 montage in confocal mode using a 40x (0.9 NA) objective. Five z sections separated by 0.8 microns were acquired and collapsed for display purposes. Hoechst staining is pseudo-colored blue, actin staining green, β -tubulin staining red and BrdU staining yellow.

Summary

BD Biosciences is working to eliminate the need for researchers having to source multiple antibodies in order to find reagents that work well in imaging applications by identifying BD Bioimaging Certified™ monoclonal antibodies that recognize important proteins in the areas of signal transduction, cell cycle, apoptosis and cancer. Each of these reagents must meet the following criteria in order to qualify as a BD Bioimaging Certified antibody (http://www.bdbiosciences.com/features/products/display_product.php?keyID=389). The antibody must exceed a signal intensity threshold over background in commonly used cell lines, work with widely used fixation and permeabilization methods, localize to the appropriate region within a cell and show an appropriate response (when applicable) following stimulation. Developing this line of reagents using monoclonal versus polyclonal antibodies also ensures consistent results by reducing lot-to-lot variability. To date, using the BD Pathway™ 855 and 435 Bioimagers, we have identified several hundred BD Bioimaging Certified antibodies, and will continue to identify additional reagents in major research application areas including neurobiology and stem cells. In this application note we have demonstrated the utility of these reagents to detect specific cellular responses such as induction of apoptosis (e.g. anti-active caspase-3 specific antibody), cell signaling events (e.g. anti-phospho-STAT antibodies), cell cycle status (e.g. anti-BrdU and anti-phospho-Histone H3 antibodies), and sub-cellular structures (e.g. anti β -tubulin antibody).

In addition to the unlabeled BD Bioimaging Certified antibodies, we are also developing BD Bioimaging Certified primary conjugated antibodies which enable true high content screening. These reagents will be available in several colors promoting a mix-and-match approach to multiplexing. We anticipate that multiplexing conjugated antibodies will allow researchers to gain 2 to 3 fold more information from a cell than was previously possible. This will ultimately enable the development of novel high content cell-based assays.

References

1. Lang, P., Yeow, K., Nichols, A., Scheer, A. 2006. Cellular Imaging in Drug Discovery. *Nature Reviews Drug Discovery*. 5:343-356.
2. Comley, J. 2005. High Content Screening. *Drug Discovery World*, Summer. 31-53.
3. Perlman ZE, Slack MD, Feng Y, Mitchison TJ, Wu LF, Altschuler SJ. 2004. Multidimensional Drug Profiling by Automated Microscopy. *Science*. 306:1194-1198.
4. Lansing TD, Giuliano KA. 2005. Multiplexed high content screening assays create a systems cell biology approach to drug discovery. *Drug Discovery Today: Technologies* 2:149-154.
5. Thornberry NA and Lazebnik Y. 1998. Caspases: enemies within. *Science* 281:1312-1316.
6. Fujita N and Tsuruo T. 1998. Involvement of Bcl-2 cleavage in the acceleration of VP-16-induced U937 cell apoptosis. *Biochem. Biophys. Res. Commun.* 246:484-488.
7. Jessel R, Haertel S, Socaciu C, Tykhonova S, Diehl HA. (2002). Kinetics of apoptotic markers in exogeneously induced apoptosis of EL4 cells. *J.Cell.Mol.Med.* 6. 82-92.
8. Bromberg J, Darnell JE. 2000. The role of STATs in transcriptional control and their impact on cellular function. *Oncogene*. 19:2468-2473.
9. Liu KD, Gaffen SL, and Goldsmith MA. 1998. Jak/Stat signaling by cytokine receptors. *Current Opinion in Immunology*. 10:271-278.
10. Abraham I, Marcus M, Cabral F, and Gottesman MM. 1983. Mutations in α - and β -tubulin affect spindle formation in Chinese Hamster Ovary cells. *J. Cell Bio.* 97, 1055-1061.
11. Goto H. 1999. Identification of a novel phosphorylation site on the histone H3 coupled with mitotic chromosome condensation . *J. Biol. Chem.* 274, 25543.

Regional Offices

Asia Pacific
BD Singapore
Tel 65.6861.0633
Fax 65.6860.1593

Australia/New Zealand
Australia
Toll Free: 1800 656 100
Tel 61.2.8875.7000
Fax 61.2.8875.7200
bd_anz@bd.com

New Zealand
Toll Free: 0800 572.468
Tel 64.9.574.2468
Fax 64.9.574.2469
bd_anz@bd.com

Europe
Belgium
Tel 32.53.720.550
Fax 32.53.720.549
customer_service_bdbelgium@europe.bd.com

Canada
BD Biosciences
Toll Free 888.259.0187
Tel 905.542.8028
Fax 888.229.9918
canada@bd.com

Japan
Nippon Becton Dickinson
Toll Free 0120.8555.90
Tel 81.24.593.5405
Fax 81.24.593.5761

United States
BD Biosciences
Toll Free 877.232.8995
Customer/Technical Service
Fax 301.340.9775
Bioimaging Systems
Fax 301.340.9775
Discovery Labware
Fax 978.901.7493
Immunocytometry Systems
Fax 800.325.9637
Pharming
Fax 800.325.9637
bdbiosciences.com

Local Offices and Distributors

Argentina/Paraguay/Uruguay
Toll Free: 0800.444.5523
Tel 54.11.4551.7100
Fax 54.11.4551.7400
crc_argentina@bd.com

Austria
Tel 43.1.706.36.60.20
Fax 43.1.706.36.60.11
customerservice.bdb.at@europe.bd.com

Brazil
Toll Free: 0800.771.7157
Tel 55.11.5185.9995
Fax 55.11.5185.9895
biosciences@bd.com.br

CCA (Caribbean/Central America)
Tel 52.55.5999.8318
Fax 52.55.5999.8396
caribbean_customers@bd.com
centralamerica_customers@bd.com

Chile
Tel 56.2 482.7800 x16
Fax 56.2 482.7802

China
Tel 8610.6418.1608
Fax 8610.6418.1610

Colombia
Tel 57.1.572.4060 x244 / 258
Fax 57.1.572.3650 / 4250

Denmark
Tel 45.43.43.45.66
Fax 45.43.43.41.66
bdbnordic@europe.bd.com

East Africa
Tel 254.2.341157
Fax 254.2.341161
bd@africaonline.co.ke

Eastern Europe
Tel 49.6221.305.161
Fax 49.6221.305.418
bdb.ema@europe.bd.com

Egypt
Tel 202.268.0181
Fax 202.266.7562

Finland
Tel 358.9.88.70.7832
Fax 358.9.88.70.7817
bdbnordic@europe.bd.com

France
Tel 33.4.76.68.36.09
Fax 33.4.76.68.35.06
customerservice.bdb.france@europe.bd.com

Germany
Tel 49.6221.305.551
Fax 49.6221.303.609
customerservice.bdb.de@europe.bd.com

Greece
Tel 30.1.940.77.41
Fax 30.1.940.77.40

Hong Kong
Tel 852.2575.8668
Fax 852.2803.5320

Hungary
Tel 36.1.345.7090
Fax 36.1.345.7093
bdb.ema@europe.bd.com

India
Tel 91.124.238.3566.70
Fax 91.124.238.3225

Indonesia
Tel 62.21.577.1920
Fax 62.21.577.1925

Italy
Tel 39.02.48.240.1
Fax 39.02.48.20.33.36

Korea
Tel 822.3404.3700
Fax 822.557.4048

Malaysia
Tel 603.7725.5517
Fax 603.7725.4772

Mexico
Toll Free: 01.800.236.2543
Tel 52.55.5999.8296
Fax 52.55.5999.8288
bioscienciasmexico@bd.com

Middle East
Tel 971.4.337.95.25
Fax 971.4.337.95.51
bdb.ema@europe.bd.com

The Netherlands
Tel 31.20.582.94.20
Fax 31.20.582.94.21
customer_service_bd holland@europe.bd.com

North Africa
Tel 33.4.76.68.35.03
Fax 33.4.76.68.35.44
bdbiosciences_maghreb@europe.bd.com

Norway
Tel 47.73.59.12.00
Fax 47.73.59.12.01
norge@europe.bd.com

Pakistan
Tel 92.42.5718051
Fax 92.42.5718056
bdb_pak@bd.com

Peru/Bolivia/Ecuador
Tel 51.1.712.0160
Fax 51.1.712.0165

Philippines
Tel 632.815.8981
Fax 632.815.6644

Poland
Tel 48.22.651.75.88
Fax 48.22.651.75.89
bdb.ema@europe.bd.com

Portugal
Enzifarma
Tel 351.21.421.93.30
Fax 351.21.421.93.39

South Africa
Tel 27.11.603.2620
Fax 27.11.804.0544 / 46
bdb.ema@europe.bd.com

Spain
Tel 34.902.27.17.27
Fax 34.91.848.81.04

Sweden
Tel 46.8.775.51.10
Fax 46.8.775.51.11
bdbnordic@europe.bd.com

Switzerland
Tel 41.61.485.22.22
Fax 41.61.485.22.00
customerservice.bdb.ch@europe.bd.com

Taiwan
Tel 8862.2722.5660
Fax 8862.2725.1768

Thailand
Tel 662.646.1800
Fax 662.646.1801

Turkey
Tel 90.212.328.2720
Fax 90.212.328.2730
bdb.ema@europe.bd.com

United Kingdom & Ireland
Tel 44.1865.78.16.88
Fax 44.1865.78.16.27
BDUK_CustomerService@europe.bd.com

Venezuela
Tel 58.212.241.3412 x248
Fax 58.212.241.7389

West Africa
Sobidis
Tel 225.20.33.40.32
Fax 225.20.33.40.28

Alexa Fluor® is a registered trademark of Molecular Probes™, Inc.

©2007 Becton, Dickinson and Company. All rights reserved. No part of this publication may be reproduced, transmitted, transcribed, stored in retrieval systems, or translated into any language or computer language, in any form or by any means: electronic, mechanical, magnetic, optical, chemical, manual, or otherwise, without prior written permission from BD Biosciences. For research use only. Not for use in diagnostic or therapeutic procedures. Purchase does not include or carry any right to resell or transfer this product either as a stand-alone product or as a component of another product. Any use of this product other than the permitted use without the express written authorization of Becton Dickinson and Company is strictly prohibited. BD, BD Logo and all other trademarks are the property of Becton, Dickinson and Company. ©2007 BD



BD Biosciences
10975 Torreyana Road
San Diego, CA 92121-1106
Toll free 877.232.8995
bdbiosciences.com

PRESORTED
STANDARD
US POSTAGE
PAID
SAN LEANDRO, CA
PERMIT NO. 169