



# Flow Cytometry Reagents for Non-Human Primate Research

**BD Biosciences** [www.bdbiosciences.com](http://www.bdbiosciences.com)

- Biometric Imaging
- Clontech

- Immunocytometry Systems
- Labware

- Transduction Laboratories
- PharMingen





## Index

Introduction . . . . .	1
Multi-color Reagents for assessment of lymphocyte subsets . . . . .	1
Single-color Reagents for assessment of lymphocyte subsets . . . . .	2
Expression Profiles . . . . .	3
Human Clone Cross-Reactivity . . . . .	10



# Introduction

Welcome to our line of flow cytometry products for primate research. Designed and formulated specifically to support your cell analysis needs in non-human primates, this core series of anti-human and anti-non-human primate antibodies have been developed, formulated and tested on rhesus, cynomologous macaques, and baboons. Now, with these reagents, you can spend your time where it's needed—on your research—and not wasting your valuable time testing and validating reagents.

We have carefully selected human cross-reactive clones across the former BDIS and PharMingen product lines that perform well in the primates indicated in this brochure. Our active licensing and hybridoma development endeavors provide you with the clones you want to meet your research needs and expectations. BD PharMingen is committed to the development of Non-Human Primate reagents because it is widely recognized that the immune systems of primates can be very different from typical human profiles, especially with respect to population frequencies and antigen expression.

What this means to the user is that different optimal concentrations of antibodies are required for this application. To address this, we have selected and characterized the performance of these reagents by flow cytometry to get the best resolution possible. As a result, the specific optimization of these reagents will not only give you validated performance, it will also save you money.

## Stay Current

Since our product line for Non-Human Primate research is continually evolving, our goal is to keep you up-to-date at all times. We are actively maintaining a web page that features current Non-Human Primate products and appropriate cross reactivity listings. Keep checking for updates as recent experimental data on chimpanzee peripheral blood are forthcoming. If the species you are working with is not listed here, please visit us on the web at [www.pharmingen.com](http://www.pharmingen.com) or contact BD PharMingen Technical Service at 877.232.8995.

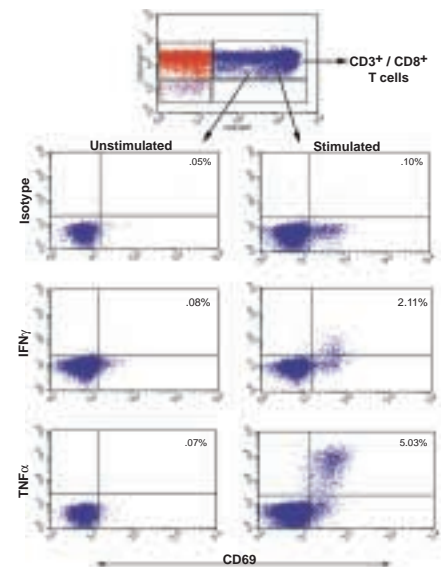
## Need more?

To help the community have access to a standardized repertoire of valuable and relevant research tools we welcome the opportunity to license any clones that you may have or have interest in. We also welcome any inquiries regarding validation of our material on different species for posting to the web. Please call us directly at 858.812.8800 (US) or email us at [busdev@pharmingen.com](mailto:busdev@pharmingen.com).

# Multi-color Reagents

Considering a large study and need to ensure data quality? Then talk to our custom technology team. In addition to 4-color lymphocyte immunophenotyping that's compatible with clinical software packages (MultiSET), we're also able to perform antigen specific cytokine functional response in many primate models. In the example shown to the right, peripheral blood from cynomologus monkey was stimulated with SEB for 7 hours in the presence or absence of GolgiPlug and stained following permeabilization. Antigen specific cytokine production clearly indicates a type 1 driven response. (Data courtesy of Jerome Zawadzki, BD PharMingen)

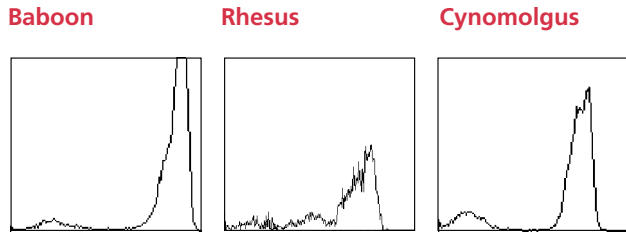
For more details on how you can do this yourself or even have our Custom Technology team do it for you contact us today at 800.848.6227 or [ctt@pharmingen.com](mailto:ctt@pharmingen.com).



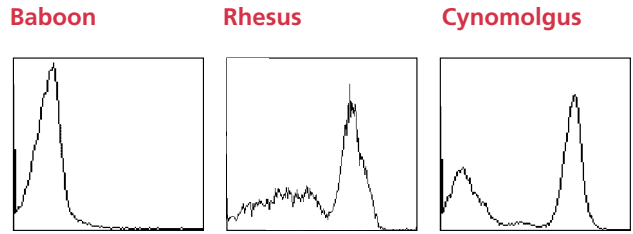
## Single-color Reagents for assessment of lymphocyte subsets

Specificity	Clone	Pure/NA/LE™	FITC	PE	PerCP	CyChrome
CD2	RPA-2.10	71001A	71004L	71005L		
CD3e	SP34	71010D				
CD3e	SP34	71011A	71014L	71015L	7101PL	
CD4	M-T477	71021A	71024L	71025L		
CD4	L200	71931A	71734L	71735L	71736L	
CD6	M-T605	71681A	71684L	71685L		
CD8	RPA-T8	71281A	71284L	71285L		
CD10	HI10a			71335L		
CD11b	ICRF44	71491A		71495L		
CD14	M5E2	71371A	71374L	71375L		
CD16	3G8	71031A	71034L	71035L		
CD18	6.7	71381A	71384L	71385L		
CD20	2H7	71081A	71084L	71085L		
CD21	B-ly4	71521A		71525L		
CD27	M-T271	71531A	71534L	71535L		
CD28	CD28.2	71041A	71044L	71045L		
CD29	MAR4	71541A		71545L		
CD31	WM59	71641A	71644L			
CD32	FLI8.26	71551A	71554L			
CD34	563			71725L		
CD40	5C3	71051A	71054L	71055L		
CD41a	HIP8	71441A	71444L	71445L		
CD41b	HIP2	71431A	71434L			
CD42a	ALMA.16	71671A				
CD45	TÜ116			71195L		71198L
CD45RA	5H9	71061A	71064L	71065L		
CD49b	AK-7	71571A	71574L			
CD49d	9F10	71091A		71095L		
CD49f	GoH3	71651A	71654L	71655L		
CD56	MY31			71135L		
CD63	H5C6	71481A		71485L		
CD69	FN50	71181A	71184L	71185L		
CD86	FUN-1		71594L	71595L		
CD87	VIM5	71601A		71605L		
CD95	DX2	71111A	71114L	71115L		
CD122	Mikβ2	71501A		71505L		
CD130	AM64	71511A		71515L		
CDw137	4B4-1	71471A		71475L		
CD152	BN13.1	71461A		71465L		
CD154	TRAP1	71451A	71454L	71455L		
CD162	KPL-1	71621A		71625L		
CD165	SN2	71631A		71635L		
CD184 (CXCR4)	12G5	71341A		71345L		
HLA-ABC	G46-2.6	71611A	71614L	71615L		
HLA-DR	G46-6	71121A	71124L	71125L		
IFN-γ	4S.B3	71271A		71275L		
IL-2	MQ1-17H12		71234L			
TNF-α	MAB11	71241A		71245L		
Mouse IgG1, κ	MOPC-21	71141A	71144L	71145L	7114PL	71148L
Mouse IgG2a, κ	G155-178	71151A	71154L	71155L		
Mouse IgG2b, κ	27-35	71161A	71164L	71165L		
Mouse IgG3, κ	J606	71171A	71174L	71175L	7117PL	
Rat IgG2a, κ	R35-95	71411A	71414L			

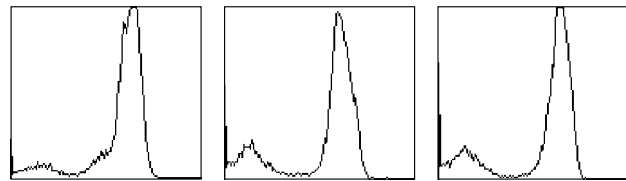
# Expression Profiles



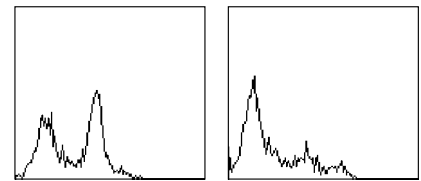
Profile of anti-CD2-PE reactivity on peripheral blood lymphocytes of non-human primates analyzed by flow cytometry



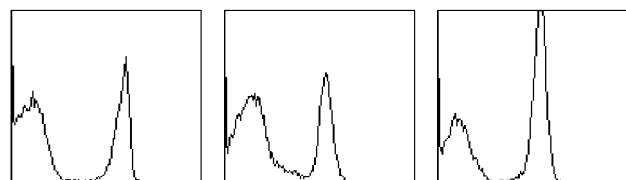
Profile of anti-CD6-PE reactivity on peripheral blood lymphocytes of non-human primates analyzed by flow cytometry



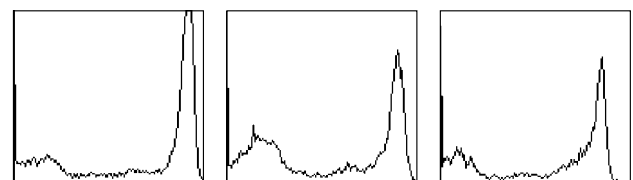
Profile of anti-CD3-PerCP reactivity on peripheral blood lymphocytes of non-human primates analyzed by flow cytometry



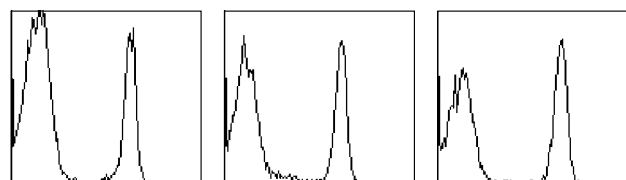
Profile of anti-CD7-FITC reactivity on peripheral blood lymphocytes of non-human primates analyzed by flow cytometry



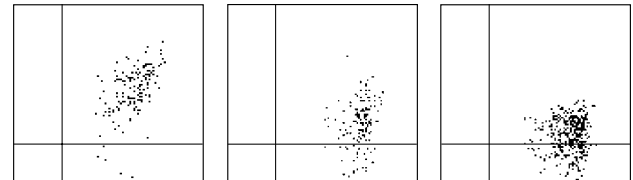
Profile of anti-CD4-FITC (Clone M-T477) reactivity on peripheral blood lymphocytes of non-human primates analyzed by flow cytometry



Profile of anti-CD8-PE reactivity on peripheral blood lymphocytes of non-human primates analyzed by flow cytometry



Profile of anti-CD4-FITC (Clone L200) reactivity on peripheral blood lymphocytes of non-human primates analyzed by flow cytometry



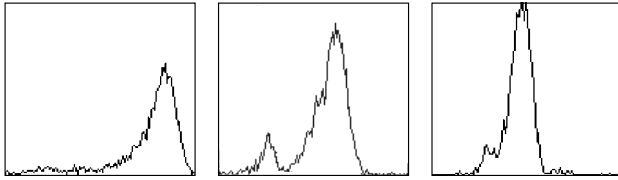
Profile of anti-CD9-PE/CD42a-FITC reactivity on peripheral blood platelets of non-human primates analyzed by flow cytometry

## Expression Profiles *(continued)*

**Baboon**

**Rhesus**

**Cynomolgus**

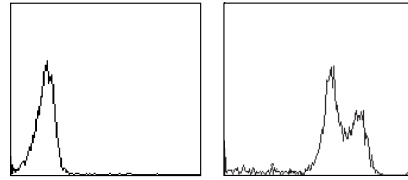


Profile of anti-CD10-PE reactivity on peripheral blood granulocytes of non-human primates analyzed by flow cytometry

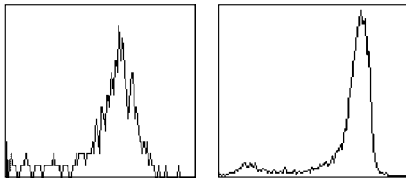
**Baboon**

**Rhesus**

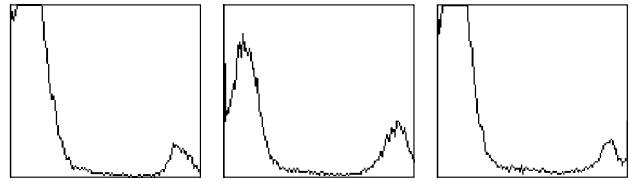
**Cynomolgus**



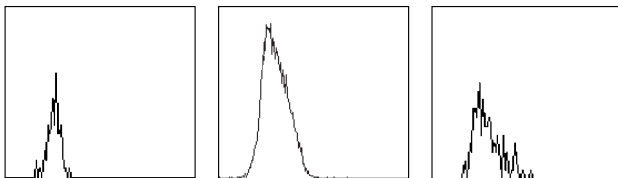
Profile of anti-CD18-PE reactivity on peripheral blood lymphocytes of non-human primates analyzed by flow cytometry



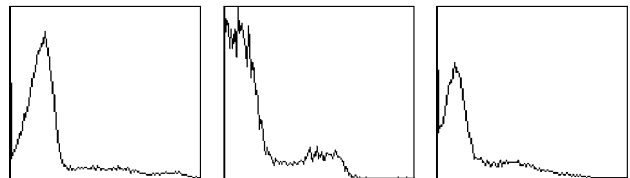
Profile of anti-CD11b-Purified reactivity on peripheral blood granulocytes of non-human primates analyzed by flow cytometry



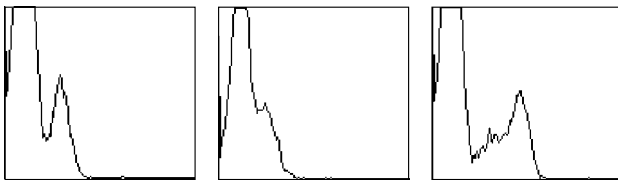
Profile of anti-CD20-PE reactivity on peripheral blood lymphocytes of non-human primates analyzed by flow cytometry



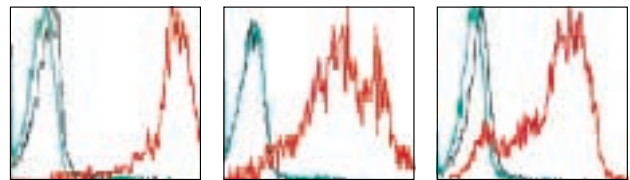
Profile of anti-CD14-FITC reactivity on peripheral blood monocytes of non-human primates analyzed by flow cytometry



Profile of anti-CD21-PE reactivity on peripheral blood lymphocytes of non-human primates analyzed by flow cytometry



Profile of anti-CD16-FITC reactivity on peripheral blood lymphocytes of non-human primates analyzed by flow cytometry



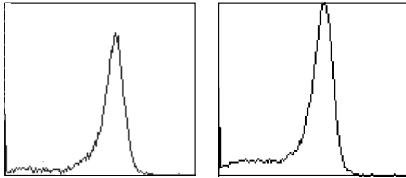
Profile of anti-CD25-PE reactivity on PBMCs of non-human primates analyzed by flow cytometry (thin black line: isotype control, green line: non-stimulated PBMCs, red line: con A-stimulated PBMCs)

## Expression Profiles *(continued)*

**Baboon**

**Rhesus**

**Cynomolgus**

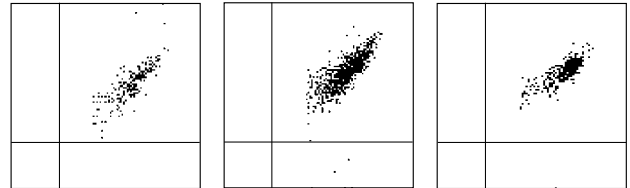


Profile of anti-CD27-PE reactivity on peripheral blood lymphocytes of non-human primates analyzed by flow cytometry

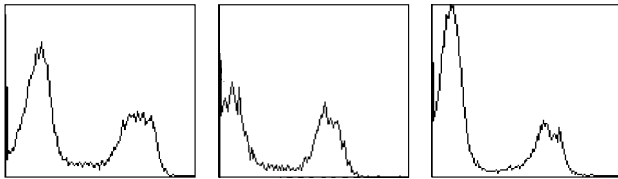
**Baboon**

**Rhesus**

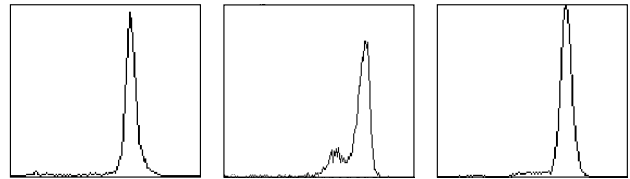
**Cynomolgus**



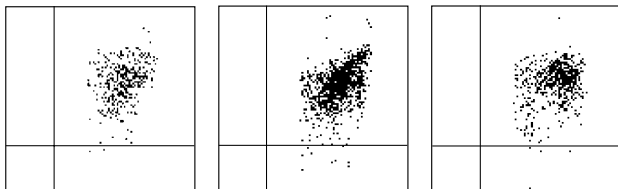
Profile of anti-CD31-PE/CD42a-FITC reactivity on peripheral blood platelets of non-human primates analyzed by flow cytometry



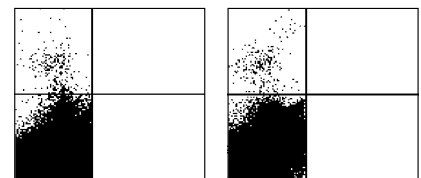
Profile of anti-CD28-PE reactivity on peripheral blood lymphocytes of non-human primates analyzed by flow cytometry



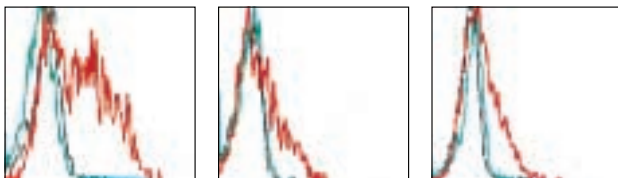
Profile of anti-CD32-FITC reactivity on peripheral blood granulocytes of non-human primates analyzed by flow cytometry



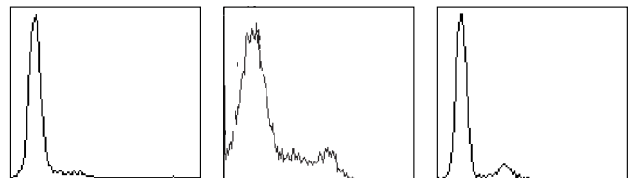
Profile of anti-CD29-PE/CD42a-FITC reactivity on peripheral blood platelets of non-human primates analyzed by flow cytometry



Profile of anti-CD34-PE/CD14-FITC reactivity on peripheral blood mononuclear cells of non-human primates analyzed by flow cytometry



Profile of anti-CD30-PE reactivity on PBMCs of non-human primates analyzed by flow cytometry (thin black line: isotype control, green line: non-stimulated PBMCs, red line: con A-stimulated PBMCs)



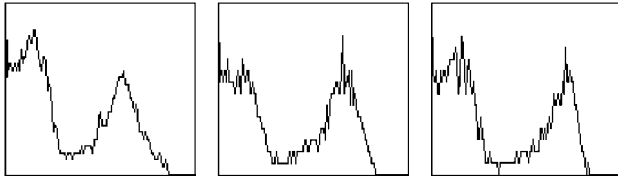
Profile of anti-CD40-FITC reactivity on peripheral blood lymphocytes of non-human primates analyzed by flow cytometry

## Expression Profiles *(continued)*

**Baboon**

**Rhesus**

**Cynomolgus**

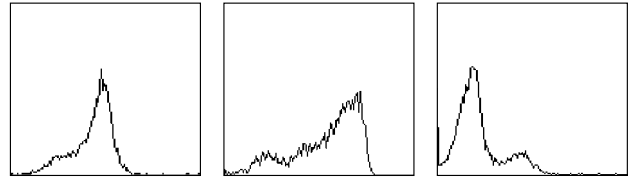


Profile of anti-CD41a-FITC reactivity on peripheral blood platelets of non-human primates analyzed by flow cytometry

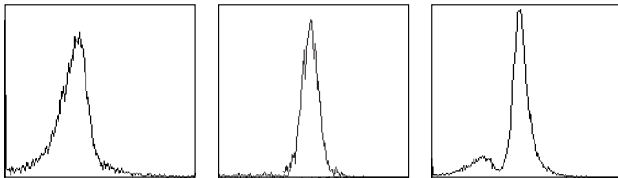
**Baboon**

**Rhesus**

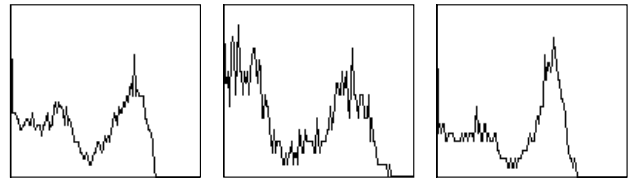
**Cynomolgus**



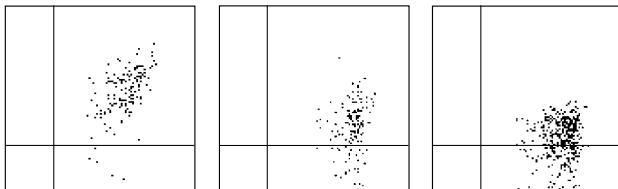
Profile of anti-CD45RA-FITC reactivity on peripheral blood lymphocytes of non-human primates analyzed by flow cytometry



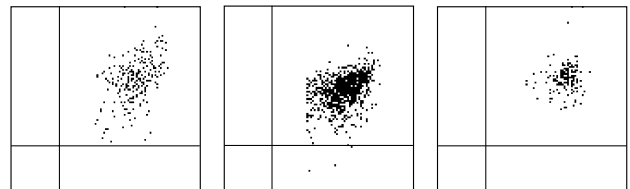
Profile of anti-CD41b-FITC reactivity on resting platelets of non-human primates analyzed by flow cytometry



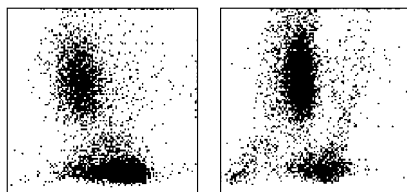
Profile of anti-CD47-FITC reactivity on peripheral blood platelets of non-human primates analyzed by flow cytometry



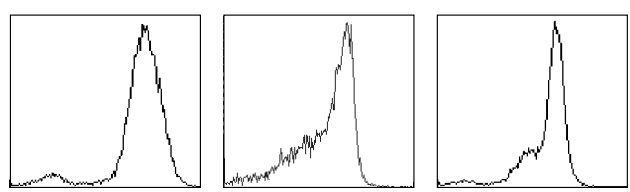
Profile of anti-CD42a-FITC/CD9-PE reactivity on peripheral blood platelets of non-human primates analyzed by flow cytometry



Profile of anti-CD49b-PE/CD42a-FITC reactivity on peripheral blood platelets of non-human primates analyzed by flow cytometry



Profile of anti-CD45-Cy-Chrome™ reactivity on peripheral blood of non-human primates analyzed by flow cytometry



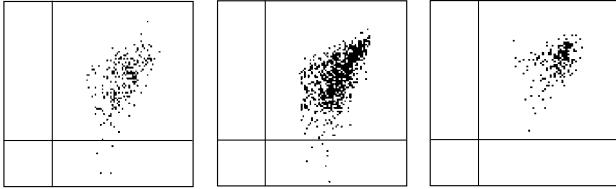
Profile of anti-CD49d-PE reactivity on peripheral blood lymphocytes of non-human primates analyzed by flow cytometry

## Expression Profiles *(continued)*

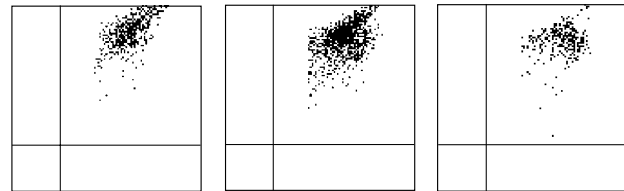
**Baboon**

**Rhesus**

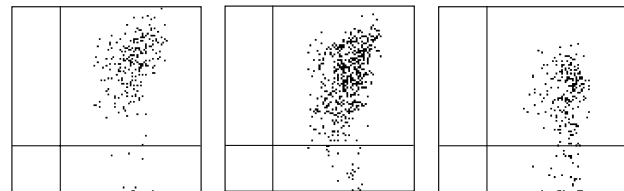
**Cynomolgus**



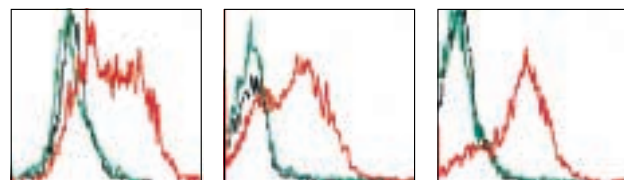
Profile of anti-CD49f-PE/CD42a-FITC reactivity on peripheral blood platelets of non-human primates analyzed by flow cytometry



Profile of anti-CD61-PE/CD42a-FITC reactivity on peripheral blood platelets of non-human primates analyzed by flow cytometry



Profile of anti-CD62P-PE/CD42a-FITC reactivity on peripheral blood platelets of non-human primates analyzed by flow cytometry

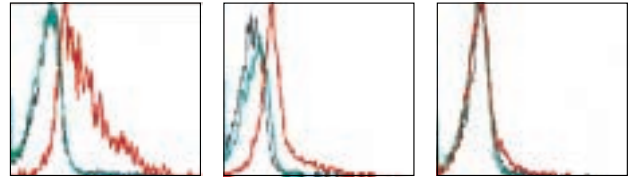


Profile of anti-CD69-PE reactivity on PBMCs of non-human primates analyzed by flow cytometry (thin black line: isotype control, green line: non-stimulated PBMCs, red line: con A-stimulated PBMCs)

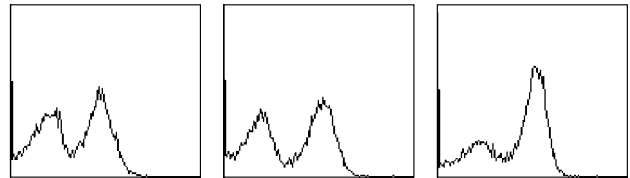
**Baboon**

**Rhesus**

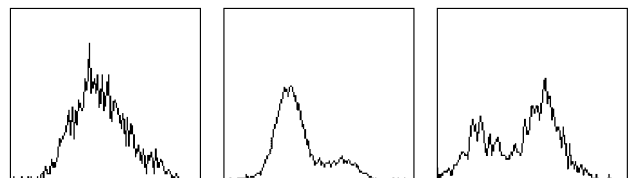
**Cynomolgus**



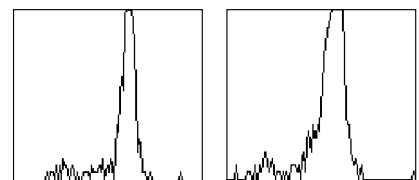
Profile of anti-CD70-PE reactivity on PBMCs of non-human primates analyzed by flow cytometry (thin black line: isotype control, green line: non-stimulated PBMCs, red line: con A-stimulated PBMCs)



Profile of anti-CD80-PE reactivity on peripheral blood lymphocytes of non-human primates analyzed by flow cytometry



Profile of anti-CD83-PE reactivity on cultured dendritic-like cells of non-human primates analyzed by flow cytometry



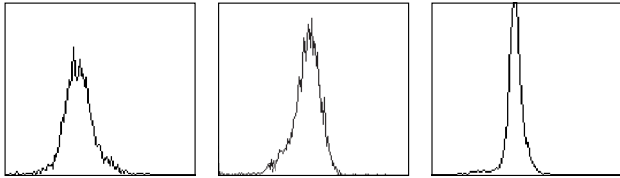
Profile of anti-CD86-PE reactivity on peripheral blood monocytes of non-human primates analyzed by flow cytometry

## Expression Profiles *(continued)*

**Baboon**

**Rhesus**

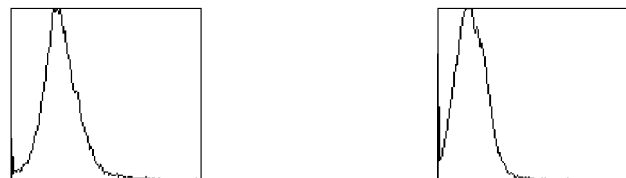
**Cynomolgus**



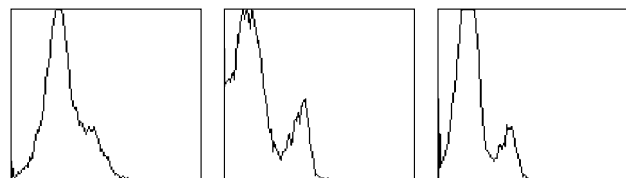
Profile of anti-CD87-PE reactivity on peripheral blood granulocytes of non-human primates analyzed by flow cytometry



Profile of anti-CD95-PE reactivity on peripheral blood lymphocytes of non-human primates analyzed by flow cytometry



Profile of anti-CD122-PE reactivity on peripheral blood lymphocytes of non-human primates analyzed by flow cytometry

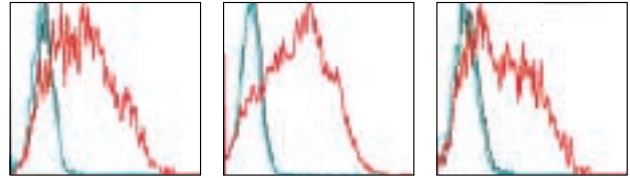


Profile of anti-CD130-PE reactivity on peripheral blood lymphocytes of non-human primates analyzed by flow cytometry

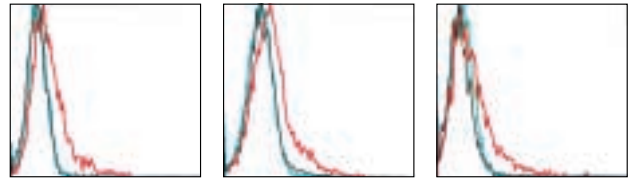
**Baboon**

**Rhesus**

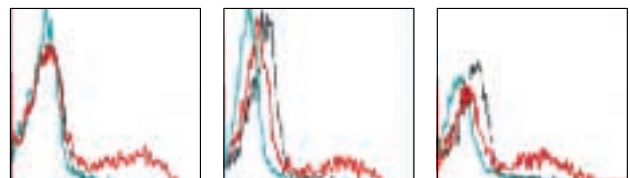
**Cynomolgus**



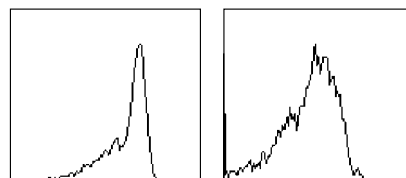
Profile of anti-CDw137-PE reactivity on PBMCs of non-human primates analyzed by flow cytometry (thin black line: isotype control, green line: non-stimulated PBMCs, red line: con A-stimulated PBMCs)



Profile of anti-CD152-PE reactivity on PBMCs of non-human primates analyzed by flow cytometry (thin black line: isotype control, green line: non-stimulated PBMCs, red line: con A-stimulated PBMCs)



Profile of anti-CD154-PE reactivity on PBMCs of non-human primates analyzed by flow cytometry (thin black line: isotype control, green line: non-stimulated PBMCs, red line: con A-stimulated PBMCs)



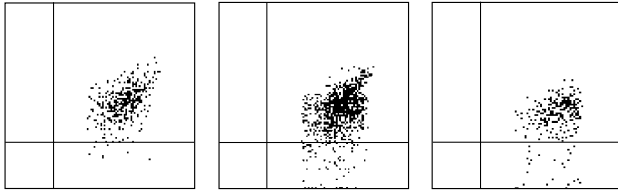
Profile of anti-CD162-PE reactivity on peripheral blood lymphocytes of non-human primates analyzed by flow cytometry

## Expression Profiles *(continued)*

**Baboon**

**Rhesus**

**Cynomolgus**

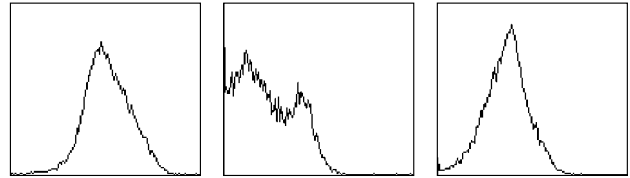


Profile of anti-CD165-PE/CD42a-FITC reactivity on peripheral blood platelets of non-human primates analyzed by flow cytometry

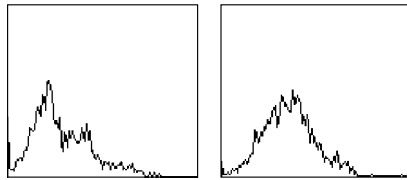
**Baboon**

**Rhesus**

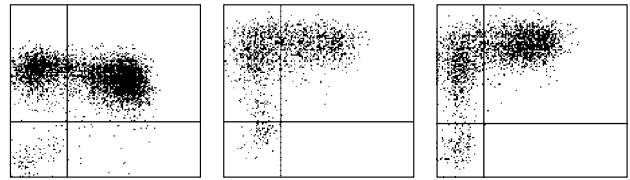
**Cynomolgus**



Profile of anti-CXCR4 (Fusin)-PE reactivity on peripheral blood lymphocytes of non-human primates analyzed by flow cytometry



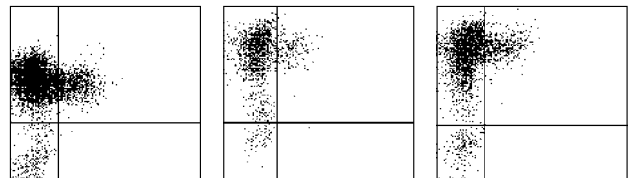
Profile of anti-CCR5-PE reactivity on peripheral blood lymphocytes of non-human primates analyzed by flow cytometry



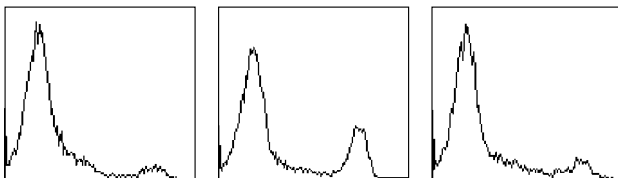
Profile of anti-CD69-PE/TNF $\alpha$ -FITC reactivity on peripheral blood mononuclear cells of non-human primates analyzed by flow cytometry



Profile of anti-HLA-ABC-PE reactivity on peripheral blood lymphocytes of non-human primates analyzed by flow cytometry



Profile of anti-CD69-PE/IFN $\gamma$ -FITC reactivity on stimulated peripheral blood lymphocytes of non-human primates analyzed by flow cytometry



Profile of anti-HLA-DR-FITC reactivity on peripheral blood lymphocytes of non-human primates analyzed by flow cytometry

## Human Clone Cross-Reactivity

Specificity	Clone	Chimp	Baboon	Cyno	Rhesus	Pig	Sheep	Horse	Bovine	Dog	Cat
CD1a	HI149		-	-	-						
CD1a	M-T102		+	+	+						
CD2	RPA-2.10	+	+	+	+	+	-	-	-	-	-
CD3	UCHT1	+	-	-	-	-	-	-	-	-	-
CD3	HIT3a	+	-	-	-	-	-	-	-	-	-
CD3	SP34	+	+	+	+	-	-	-	-	-	-
CD4	M-T477		+	+	+	-	-	-	-	-	-
CD4	L200		+	+	+						
CD4	RPA-T4	+	-	-	-	-	-	-	-	-	-
CD5	UCHT2	+	-	-	-	-	-	-	-	-	-
CD6	M-T605	+	+	+	+	-	-	-	-	-	-
CD7	M-T701	+	+	+	+	-	-	-	-	-	-
CD8	HIT8a	+	-	-	-	-	-	-	-	-	-
CD8	RPA-T8	+	+	+	+	-	-	-	-	-	-
CD9	ML13	-	+	+	+	-	-	-	-	-	-
CD10	HI10a	+	+	+	+	-	-	-	-	-	-
CD11a	HI111	+	+	+	+	-	+	+	+	+	-
CD11b	ICRF44(44)	+	+	+	+	+	-	-	-	-	-
CD11c	B-ly6	-	-	-	-	-	-	-	-	-	-
CD11c	S-HCL-3		+	+	+	-	-	-	-	-	-
CD13	WM15	+	-	-	-	-	-	-	-	-	-
CD14	M5E2	+	-	+	+	-	-	-	+	+	-
CD15	HI98	+	-	-	-	-	-	-	-	-	-
CD15s	2H5		-	-	-	-	-	-	-	-	-
CD15s	2F3		+	+	+	-	+	+	-	+	+
CD16	3G8	+	+	+	+	-	-	-	-	-	-
CDW17	G035		+	-	-	-	-	-	-	-	-
CD18	6.7	+	-	+	+	+	+	+	+	-	+
CD19	H1B19	+	+	-	-	-	-	-	-	-	-
CD20	2H7	+	+	+	+	-	-	-	-	-	-
CD21	B-Ly4	+	+	+	+	+	+	+	+	+	+
CD22	HIB22	+	-	-	-	-	-	-	-	-	-
CD23	M-L233	+	-	-	-	-	-	-	-	-	-
CD24	ML5	+	-	-	-	-	-	-	-	-	-
CD25	M-A251		+	+	+	-	-	-	-	-	-
CD26	M-A261	+	-	-	-	-	-	-	-	-	-
CD27	M-T271	+	+	+	+	-	-	-	-	-	-
CD28	CD28.2	+	+	+	+	-	-	-	-	-	-
CD29	MAR4	+	+	+	+	-	-	-	-	-	-
CD29	HUTS21	+	+	+	+	-	-	-	-	-	-
CD30	BerH8		+	+	+	-	-	-	-	-	-
CD31	WM59	-	+	+	+	-	-	-	-	-	-
CD32	FLI8.26	+	+	+	+	-	-	-	-	-	-
CD33	HIM2-4	+	-	-	-	-	-	-	-	-	-
CD33	WM53	+	-	-	-	-	-	-	-	-	-

Key: + = positive   w = weak   - = negative   blank = not tested

## Human Clone Cross-Reactivity *(continued)*

Specificity	Clone	Chimp	Baboon	Cyno	Rhesus	Pig	Sheep	Horse	Bovine	Dog	Cat
CD34	563	+	-	+	+						
CD34	581	+	-	-	-						
CD35	E11	+	+	+	+	-	-	-	-	-	-
CD36	CB38	+	-	-	-	-	-	-	-	-	-
CD37	M-B371	-	-	-	-	-	-	-	-	-	-
CD38	HIT2	+	-	-	-	-	-	+	-	-	-
CD39	TÜ66	+	+	+	+	-	-	-	-	-	-
CD40	5C3	+	+	+	+	-	-	-	-	-	-
CD41a	HIP8	+	+	+	+	-	-	-	-	-	-
CD41b	HIP2	+	+	+	+	+	-	-	-	-	-
CD42a	ALMA.16	+	+	+	+	-	-	-	-	-	-
CD42b	HIP1	+	-	-	-	-	-	-	-	-	-
CD43	1G10	+	-	-	-	-	-	-	-	-	-
CD44	G44-26		+	+	W	-	-	+	-	-	
CD45	HI30	+	-	-	-	-	-	-	-	-	-
CD45	TÜ116	+	-	+	+	-	-	-	-	-	-
CD45RA	5H9		+	+	+	-	-	-	-	-	-
CD45RA	HI100	+	-	-	-	-	-	-	-	-	-
CD45RB	MT4(6B6)	+	-	-	-	-	-	-	-	-	-
CD45RO	UCHL1	+	-	-	-	-	-	-	-	-	-
CD46	E4.3	+	-	-	-	-	-	-	-	-	-
CD47	B6H12.1	+	+	+	+	-	-	-	-	-	-
CD48	TÜ145	+	-	-	-	-	-	-	-	-	-
CD49b	12F1-H6	+	+	+	+	-	-	+	-	-	
CD49b	AK7		+	+	+	-	+	-	-	-	-
CD49c	C3II.1	+	-	-	-	-	-	-	-	-	-
CD49d	9F10	+	+	+	+	-	+	+	+	+	-
CD49e	IIA1		+	-	-	-	-	+	+		
CD49e	VC5	+	+	+	+	+	+	+	+	+	+
CD49f	GoH3	+	+	+	+	+	+	+	+	+	+
CD50	TÜ41	+	-	-	-	-	-	-	-	-	-
CD51	23C6	-	-	-	-	-	-	-	-	-	-
CD53	HI29	+	-	-	-	-	-	-	-	-	-
CD54	HA58	+	-	-	-	-	-	-	-	-	-
CD55	IA10	+	-	-	-	-	-	-	-	-	-
CD56	B159	+	+	+	+	-	-	-	-	-	-
CD56	MY31		+	+	+						
CD57	NK-1	-	-	-	-	-	-	-	-	-	+
CD58	1C3	+	+	+	+	-	-	-	-	+	-
CD59	p282	+	+	+	+	-	-	-	-	-	-
CD60b	M-T41	-	-	-	-	-	-	-	-	-	-
CD61	VIPL2	+	+	+	+	-	+	-	+	-	-
CD62L	Dreg 56	+	-	-	-	-	-	-	+	-	-
CD62P	AK-4	+	-	-	-	-	-	-	-	-	-
CD62P	AC1.2		+	+	+	-	-	-	-	-	-

Key: + = positive    w = weak    - = negative    blank = not tested

## Human Clone Cross-Reactivity *(continued)*

Specificity	Clone	Chimp	Baboon	Cyno	Rhesus	Pig	Sheep	Horse	Bovine	Dog	Cat
CD63	H5C6	+	+	+	+	-	-	-	-	-	-
CD64	10.1	+	+	+	+	-	-	-	-	-	-
CD66b	G10F5	+	-	-	-	-	-	-	-	-	-
CD69	FN50		+	+	+	-	-	-	-	-	-
CD70	Ki-24		+	+	+						
CD71	M-A712		-	-	-						
CD72	J4-117	+	-	-	-	-	-	-	-	-	-
CD73	AD2		-	-	+	-	-	-	-	-	-
CD74	LN2		+	-	W	-	-	-	-	-	-
CD74	M-B741	+	-	-	-	-	-	-	-	-	-
CD75	LN1	-	-	-	-	-	-	-	-	-	-
CD78	FN1	+	+	+	+	W	+	-	+	-	-
CD79a	HM47		+	+	+						
CD79b	CB3-1	+				+	+		+		
CD80	BB1		-	-	-	-	-	-	-	-	-
CD80	L307.4	+	+	+	+	-	-	-	-	-	-
CD81	JS-81	+	+	+	+	-	-	+	-	+	+
CD82	50F11		-	-	-	-	-	-	-	-	-
CD83	HB15e		+	+	+						
CD84	2G7	+	-	-	-	-	-	-	-	-	-
CD85	GHI/75	-	-	-	-	-	-	-	-	-	-
CD86	FUN-1	+	+	+	+	-	-	+	+	-	-
CD86	IT2.2	+	+	+	+	-	+	+	+	+	
CD87	VIM5	+	W	W	W	-	-	-	-	-	-
CD88	D53-1473	-	-	-	-	-	-	-	-	-	-
CD89	A59	+	+	+	+	-	-	-	-	-	-
CD90	5 E10		+	+	+	+	W	+	-	+	-
CD91	A2MR $\alpha$ 2	+	+	-	-	+	-	-	-	-	-
CD92	VIM15	+	-	-	-	-	-	-	-	-	-
CD93	VIMD2 $\beta$	+	+	+	+	+	-	-	-	-	-
CD94	HP-3D9	+	-	-	-	-	-	-	-	-	-
CD95	DX2	+	+	+	+	-	-	-	-	-	-
CD97	VIM3b.1	+	-	-	-	-	-	-	-	-	-
CD98	UM7F8	+	+	+	+	-	-	-	-	-	-
CD99	TÜ12	+	-	-	-	-	-	-	-	-	-
CD99R	HIT4		-	-	-	-					
CD100	A8.3	-	+	+	+	-	-	-	-	-	-
CD101	V7	+	+	+	+	+	-	-	-	-	-
CD122	MIK $\beta$ 2	+	+	+	+	-	W	+	-	-	-
CD122	MIK $\beta$ 3	-	+	+	+	-	-	+	-	-	-
CD123	7G3		+	+	+	-	-	-	-	-	-
CD123	9F5		-	-	-	-	-	-	-	-	-
CD128R $\beta$	6C6	+	-	-	-	-	-	-	-	-	-
CD128R $\beta$	5A12	-	-	-	-	+	-	-	-	-	-

Key: + = positive    W = weak    - = negative    blank = not tested

## Human Clone Cross-Reactivity *(continued)*

Specificity	Clone	Chimp	Baboon	Cyno	Rhesus	Pig	Sheep	Horse	Bovine	Dog	Cat
CD130	AM64	+	+	+	+	-	-	-	-	-	-
CD132	TÜGH4	-	-	-	-	-	-	-	-	+	-
CD132	AG184	+	+	+	+	-	-	-	-	-	-
CD134	ACT35		-	-	-						
CD137	4B4		+	+	+						
CD141	1A4	+	+	+	+	-	-	-	-	-	-
CD142	HTF-1	-	-	-	-	-	-	-	-	-	-
CD147	HIM6	-	w	w	w	-	-	-	-	-	-
CD150	A12	-	+	+	+	-	-	-	-	-	-
CD151	14A2.H1	+	+	+	+	-	-	-	-	-	-
CD152	BNI3.1		+	+	+						
CD154	TRAP1		+	+	+						
CD158a	HP-3E4	-		-	-						
CD158b	CH-L	-	-	-	-	-	-	-	-	-	-
CD161	DX12	+		+	+						
CD162	KPL-1		+	+	+						
CD163	GHI/61					+					
CD165	SN2	+	+	+	+						
CD166	3A6	+	+	+	+	-	+	-	+	+	-
β-2M	TÜ99		+								
CCR5	3A9			+	+						
Fusin	12G5		+	+	+	-	+		+	+	-
IL-12Rβ	2.4E6			+	+						
HLA-A.B.C	G46-2.6		+	+	+	-	-	-	+	-	-
HLA-D.P.Q	TU39		+	+	+	+	+	+	+	+	+
HLA-DP	HI43		+	+	+	-	-	-	-	+	-
HLA-DQ	TÜ169		+	-	-	+	+	+	-	+	+
HLA-DR	G46.6		+	+	+	-		+	-	+	-
HLA-DR	TÜ36		+	+	+	+	+	+	+	+	+
IFN-γ	4SB3		+	+	+	+					
TNF-α	MAB11		+	+	+						
IL-2	MO1-17H1		+	+	+						
IL-6	MQ2-6A3			+	+						
IL-8	G265			+	+						
IL-16	14.1			+	+						
Man R	19.2										
MCP-1	5D3-F7			+	+						
MIP-1α	11A3			+							
Rantes	2D5			+	+						
Integrin β7	FIB504										

Key: + = positive   w = weak   - = negative   **blank** = not tested

## BD Biosciences

### Asia Pacific

BD Singapore  
Tel (65) 8610 633  
Fax (65) 8601 590

### Europe

BD Biosciences  
Centralized European Office  
Tel (32) 53 720 211  
Fax (32) 53 720 450

### Japan

Nippon Becton  
Dickinson  
Tel (81) 24 593 5405  
Fax (81) 24 593 5761

### Canada

Toll free (888) 259.0187  
Tel (905) 542.8028  
Fax (905) 542.9391  
canada@bd.com

### United States

**BD PharMingen**  
Tel (858) 812.8800  
Orders (877) 232.8995  
Tech Service (800) 825.5832  
Fax (858) 812.8888  
www.bdbiosciences.com



### Mexico

Tel (525) 237 1200  
Fax (525) 237 1288

### Europe

BD Biosciences  
Life Science Research, Europe  
Tel (49) 6221 305 521  
Fax (49) 6221 305 531

### Brazil

Tel (55) 11 5185 9833  
Fax (55) 11 5185 9834

### Australia

Tel (612) 8875 7000  
Fax (612) 8875 7200

### France

Tel (33) 4 76 68 36 36  
Fax (33) 4 76 68 35 04

### Latin/South America

Tel (408) 954 2157  
Fax (408) 526 1804

### Saudi Arabia

Tel (966) 1 26 00 805/806  
Fax (966) 1 26 00 804

### Austria

Scientific Support  
Tel (49) 6221 305 525  
Fax (49) 6221 305 530  
Customer Service  
Tel (43) 170 636 60 15  
Fax (43) 170 636 60 11

### Germany

Scientific Support  
Tel (49) 6221 305 525  
Fax (49) 6221 305 530  
Customer Service  
Tel (49) 6221 305 167  
Fax (49) 6221 305 400

### Malaysia

Tel (603) 7725 5517  
Fax (603) 7725 4772

### South Africa

Tel (27) 11 807 15 31  
Fax (27) 11 807 19 53

### Belgium

Scientific Support  
Tel (32) 53 720 608  
Fax (32) 53 720 220  
Customer Service  
Tel (32) 53 720 550  
Fax (32) 53 720 549

### Greece

Tel (30) 1 940 77 41/42  
Fax (30) 1 940 77 40

### Mexico

Tel (52 5) 237 12 98  
Fax (52 5) 237 12 93

### Spain

Tel (34) 91 848 81 85/22/83  
Fax (34) 91 848 81 04

### Brazil

Tel (55) 11 545 9995  
Fax (55) 11 545 9937

### India

Tel (91 11) 693 2748  
Fax (91 11) 693 2747

### Middle East

Tel (971) 4 337 95 25  
Fax (971) 4 337 95 51

### Sweden

Tel (46) 8 775 51 00  
Fax (46) 8 645 08 08

### China

Tel (8610) 6418 1608  
Fax (8610) 6418 1610

### Hong Kong

Tel (852) 2575 8668  
Fax (852) 2803 5320

### The Netherlands

Scientific Support  
Tel (31) 20 58 29 427  
Fax (31) 20 58 29 421  
Customer Service  
Tel (31) 20 58 29 420  
Fax (31) 20 58 29 421

### Switzerland

Scientific Support  
Tel (49) 6221 305 525  
Fax (49) 6221 305 530  
Customer Service  
Tel (41) 61 485 22 36  
Fax (41) 61 485 22 03

### Denmark

Tel (45) 43 43 45 66  
Fax (45) 43 43 41 66

### Indonesia

Tel (62 21) 577 1920  
Fax (62 21) 577 1925

### Norway

*Laborel S/A*  
Tel (47) 23 05 19 30  
Fax (47) 22 63 07 51

### Taiwan

Tel (8862) 2722 5660  
Fax (8862) 2725 1768

### Eastern Europe

Tel (254) 244 96 08/09/10  
Fax (254) 244 96 19

### Italy

Tel (39) 02 48 24 03 33  
Fax (39) 02 48 20 33 36

### Philippines

Tel (632) 807 6073  
Fax (632) 850 1998

### Thailand

Tel (662) 643 1371  
Fax (662) 643 1381

### Japan

*Fujisawa Pharmaceutical Co., Ltd.*  
*(reagents)*  
Tel (81) 6 6206 7890  
Fax (81) 6 6206 7934

### Poland

Tel (48) 22 651 53 00  
Fax (48) 22 651 79 24

### Portugal

*Enzifarma*  
Tel (351) 21 42 20 100  
Fax (351) 21 42 20 110

### Turkey

Tel (90) 212 222 87 77  
Fax (90) 212 222 87 76

### UK

Tel (49) 6221 305 184  
Fax (49) 6221 305 418

### Finland

Tel (358) 9 88 70 780  
Fax (358) 9 88 70 78 17

### West Africa

Tel (225) 20 33 40 32  
Fax (225) 20 33 40 28



### BD PharMingen

10975 Torreyana Rd.  
San Diego, CA 92121  
858.812.8800 Tel  
858.812.8888 Fax

PRSR STD  
U.S. POSTAGE  
**PAID**  
Permit No.1511  
San Diego, CA