

BD Trucount Tubes

The standard for absolute counting for the clinical laboratory

Features

Provides absolute counts for immunophenotyping

Runs with high-quality BD Tritest™ and BD Multitest™ reagents

Supports automated data analysis when run on trusted BD FACSCanto™ II, BD FACSCalibur™, BD FACScan™, or BD FACSsort™ flow cytometers

Cleared for in vitro diagnostic use



BD Trucount™ technology delivers more precise absolute counts for immunophenotyping and improves laboratory productivity by simplifying operation and eliminating the need to integrate data from another analyzer.

BD Trucount tubes for absolute counting bring precision and improved productivity to your lab. Use these tubes for routine lymphocyte subsetting as well as other assays such as residual leucocyte and CD34⁺ progenitor cell enumerations.

Proven systems

The comprehensive BD Tritest and BD Multitest reagent systems integrate powerful state-of-the-art software, high-quality reagents, and BD Trucount technology with BD flow cytometry platforms. Used with the BD FACSCanto II, BD FACSCalibur, BD FACScan, or BD FACSsort flow cytometer, BD Trucount tubes are the ones you can absolutely count on for accurate, precise, and reproducible results.

Each BD Trucount tube contains a lyophilized pellet that dissolves during sample preparation, releasing a known number of fluorescent beads. BD FACSCanto clinical software and BD Multitest™ software automatically calculate subset absolute counts.

Optimize quality control

For applications with in vitro diagnostic products, use BD Trucount control beads as an integral component of the absolute counting process. Low, medium, and high control bead concentrations are provided to verify the counting accuracy of the system, ensuring the quality of results.

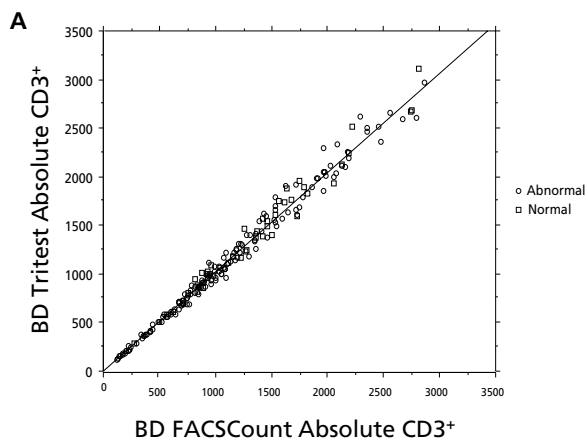


Figure A. BD FACSCount results versus BD Tritest/Trucount results.

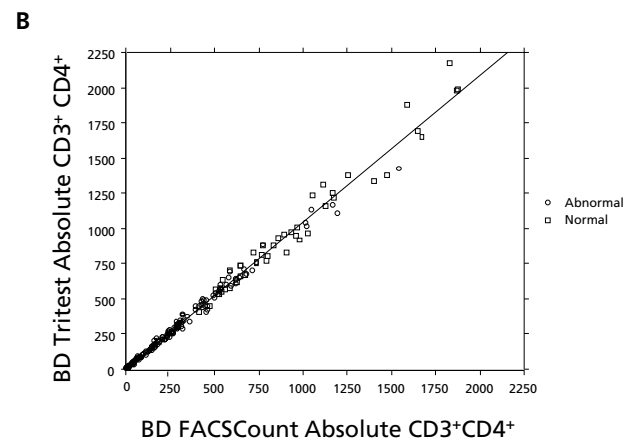


Figure B. BD FACSCount results versus BD Tritest/Trucount results.

Accuracy

In the figures above, whole blood was stained with BD Tritest CD3/CD4/CD45 using BD Trucount Tubes and acquired and analyzed using BD CellQuest™ software. Two samples of each specimen were stained and analyzed in parallel using the BD FACSCount system. Data were analyzed to determine the average differences between the results obtained using BD Tritest/Trucount versus results with BD FACSCount. The results appear in Figure A and Figure B.

BD Trucount Tubes

Sample	n	Subset	Mean	CV%
Low	10	CD3+	704	7.0
		CD3+CD4+	371	7.1
Medium	10	CD3+	1897	4.1
		CD3+CD4+	1352	3.9
High	10	CD3+	2716	4.4
		CD3+CD4+	2034	4.2

Table 1. Reproducibility: BD Trucount with BD Tritest CD3/CD4/CD45

A study using ten replicates each of a Low, Medium, and High sample was performed to assess reproducibility. The results appear in **Table 1**.

Site 1							Site 2							Site 3						
	Mean CD4	SD	CV%	Mean CD3	SD	CV%		Mean CD4	SD	CV%	Mean CD3	SD	CV%		Mean CD4	SD	CV%	Mean CD3	SD	CV%
Low	10.0	3.8	38.4	287	3.9	1.4	Low	86	7.6	8.9	768	29.5	3.8	Low	10	1.0	10.4	267	10.5	4.0
	209	11.1	5.3	1206	21.3	1.8		266	24.6	9.2	1047	53.5	5.1		49	3.2	6.4	1385	80.2	5.8
	427	32.2	7.5	3051	181.2	5.9		422	23.3	5.5	3533	247.6	7.0		236	11.7	5.0	1748	46.6	2.7
Med	502	34.6	6.9	1784	97.5	5.5	Med	517	12.3	2.4	1083	7.0	0.6	Med	715	16.8	2.3	2214	64.2	2.9
	701	16.6	2.4	926	15.5	1.7		689	27.7	4.0	1623	126.5	7.8		878	40.3	4.6	1328	49.9	3.8
High	961	102.1	10.6	3319	252.9	7.6	High	903	45.4	5.0	1589	67.6	4.3	High	947	61.1	6.4	1590	120.1	7.6
	1129	42.7	3.8	2184	71.3	3.3		1197	93.4	7.8	2254	149.8	6.6		1056	43.5	4.1	2904	164.5	5.7
	1142	45.1	4.0	1925	80.8	4.2		1201	37.4	3.1	1758	40.5	2.3		1299	79.0	6.1	1970	121.8	6.2
								1363	66.7	4.9	2330	115.5	5.0		1502	65.3	4.3	2303	63.6	2.8

Table 2. CD3/CD4/CD45 with BD Trucount representative samples (cells/ μ L, n=3)

Precision studies were also performed at three external clinical sites to assess absolute count within-sample reproducibility for normal and abnormal samples. For each sample, three aliquots of whole blood were stained with BD Tritest reagents using BD Trucount tubes. Examples of randomly selected results for individual subjects appear in the tables above.

Ordering Information

Description	Reg	Size	Cat. No.
BD Trucount tubes	IVD	50 tests	340334
BD Trucount Control	IVD	30 tests	340335
BD Multitest IMK kit with BD Trucount tubes	IVD	50 tests	340504
BD Multitest CD3/CD8/CD45/CD4 with BD Trucount tubes	IVD	50 tests	340491
BD Multitest CD3/CD16+CD56/CD45/CD19 with BD Trucount tubes	IVD	50 tests	340492
BD Multitest 6-Color TBNK CD3/CD16+CD56/CD45/CD4/CD19/CD8 with BD Trucount tubes	IVD	50 tests	337166
BD Tritest CD3/CD4/CD45 with BD Trucount tubes	IVD	50 tests	340402
BD Tritest CD4/CD8/CD3 with BD Trucount tubes	IVD	50 tests	340401
BD Leucocount Reagent Kit	IVD	50 tests	340523
BD Procount Progenitor Cell Enumeration Kit	IVD	25 tests	340498



BD Biosciences

2350 Qume Drive
San Jose, CA 95131
US Orders: 877.232.8995
bdbiosciences.com