

---

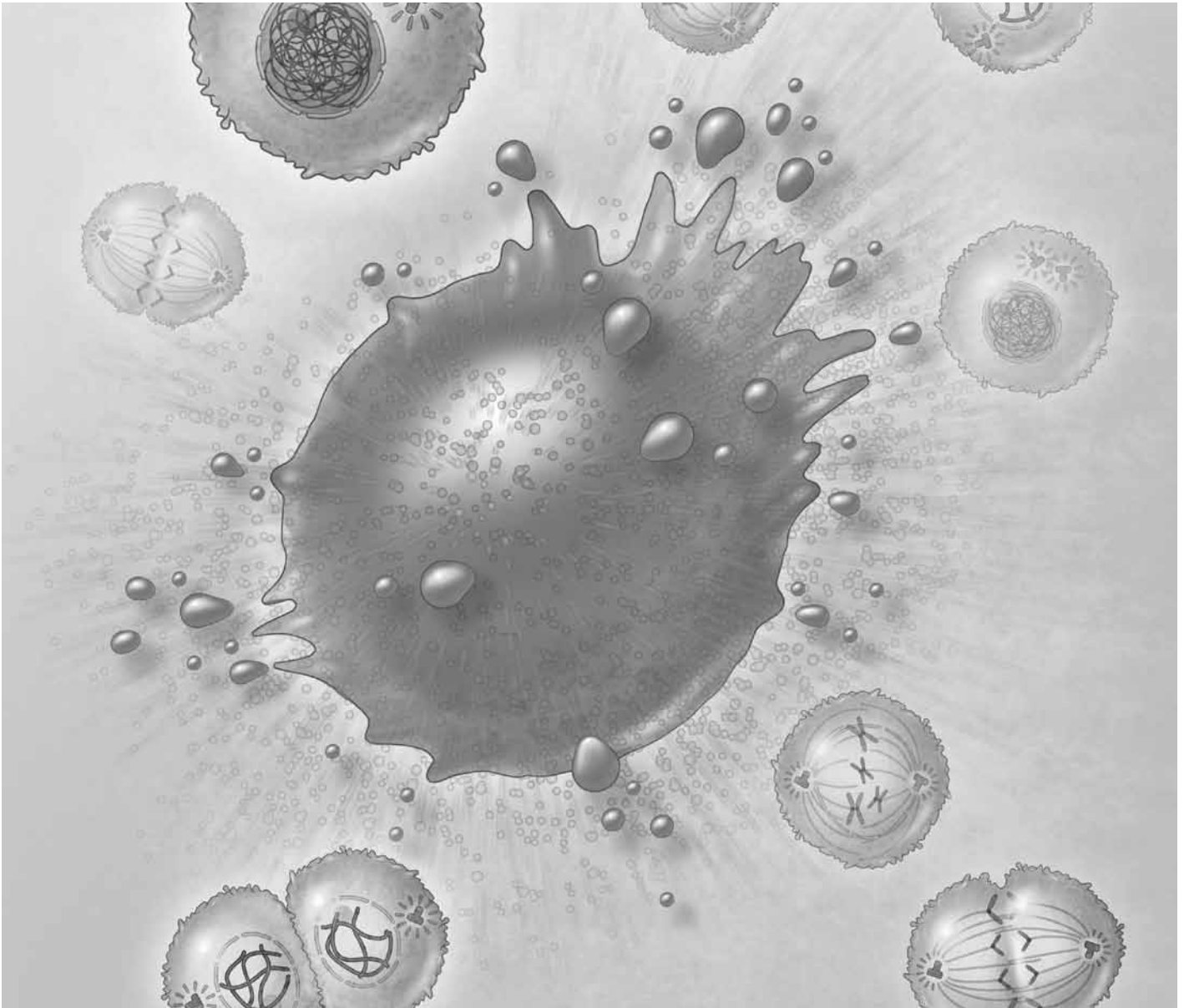
BD Biosciences

# Tools for Assessing Cell Events

Apoptosis, Cell Cycle, and Cell Proliferation

---

## Product List



## Abbreviations

The following are common abbreviations that might appear throughout the Apoptosis Reagents Product List.

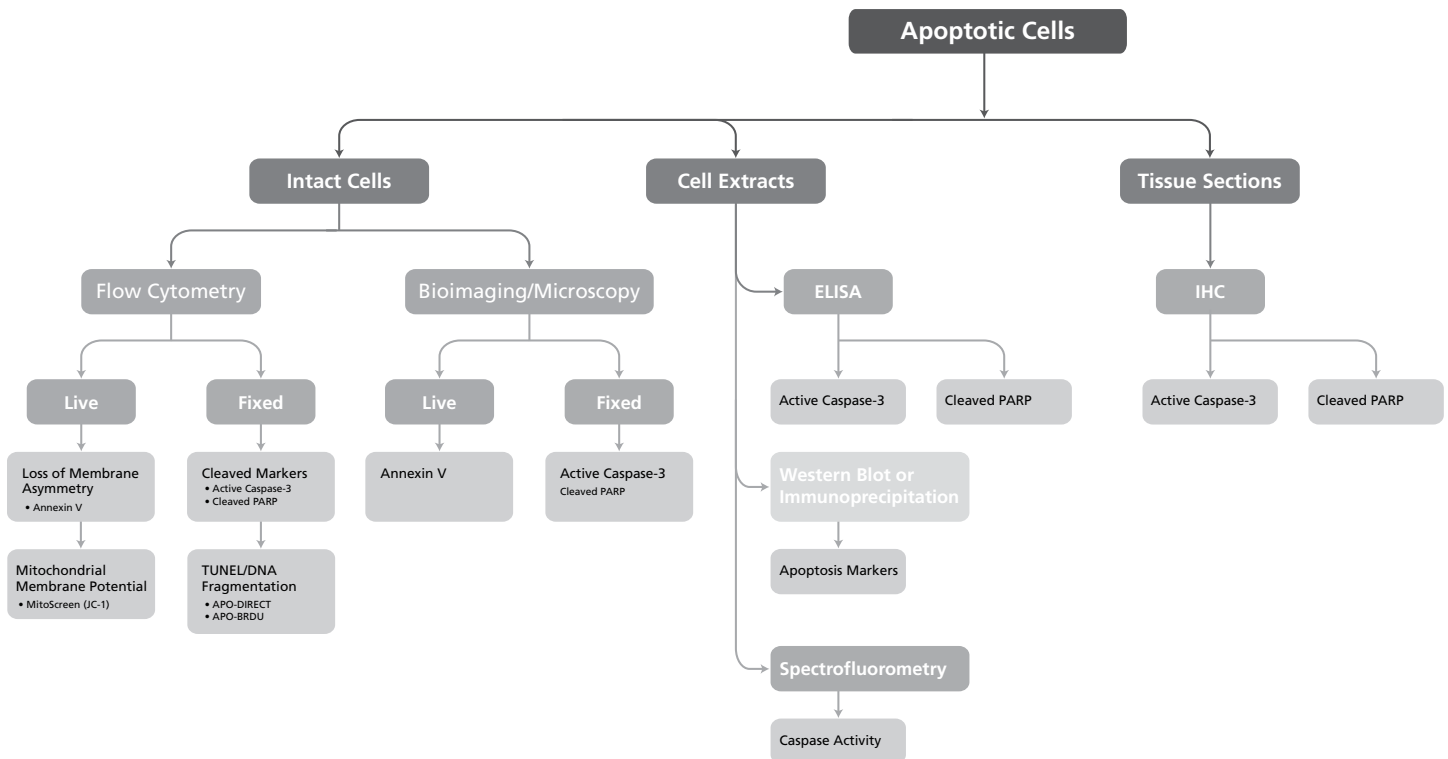
AAPP	Applications	IF	Immunofluorescence
Ar	Armenian hamster	IHC	Immunohistochemistry
Bab	Baboon	IHC(F)*	Immunohistochemistry—formalin (antigen retrieval required)
BD IMag - DM	Direct Magnet	IHC(Fr)	Immunohistochemistry—frozen
Bioimg	Bioimaging	IHC(P)	Immunohistochemistry—formalin fixed, paraffin
Block	Blocking	IHC(Zn)	Immunohistochemistry—zinc fixed
Bov	Bovine	IP	Immunoprecipitation
Chick	Chicken	IP/WB	Immunoprecipitation/Western blot
Ctrl	Controls	ISH	In situ hybridization
Cost	Co-stimulation	Lym	Lymphocyte
Cyno	Cynomolgus	Mam	Mammalian
EA	Enzyme assay	Monk	Monkey
ELISA	Enzyme-linked immunosorbent assay	Ms	Mouse
ELISA Cap.	ELISA Capture	NA/LE	No azide, low endotoxin
ELISA Det.	ELISA Detection	Neu	Neutralization
ELISPOT	Enzyme-linked immunospot	NHP	Non-human primate
FA	Functional assay	PE	Phycoerythrin
FCM	Flow cytometry	Pg	Pigeon
FCM*	Flow cytometry. Suitable for use with intracellular staining protocols using BD Cytotfix/Cytoperm™.	Pig	Porcine
FCM/IA	Flow cytometry/immunoassay	Prim	Primate
FITC	Fluorescein isothiocyanate	Qua	Quail
G Pig	Guinea pig	Rab	Rabbit
GMP	Good Manufacturing Practices	REACT	Reactivity
Gt	Goat	Rhe	Rhesus
Ham	Hamster	RUO	For Research Use Only. Not for use in diagnostic or therapeutic procedures.
HRP	Horseradish peroxidase	Sep	Cell separation
Hs	Horse	Syr Ham	Syrian hamster
Hu	Human	Tr	Trout
IC	Intracellular staining	Vir	Viral
ICtrl	Isotype control	WB	Western blot
IC Ctrl	Intracellular control	Xen	Xenopus
ICC	Immunocytochemistry (cytopins)		
IC/FCM	Intracellular staining (flow cytometry)		

## Life, Death, and Cell Proliferation

The balance of cell proliferation and apoptosis is important for both development and normal tissue homeostasis. Cell proliferation is an increase in the number of cells as a result of growth and division. Cell proliferation is regulated by the cell cycle, which is divided into a series of phases. Apoptosis or programmed cell death results in controlled self-destruction.

Several methods have been developed to assess apoptosis, cell cycle, and proliferation. BD Biosciences offers a complete portfolio of reagents and tools to allow exploration of the cellular features of these processes.

## Apoptosis Application Decision Tree



# Apoptosis Product List

Kits/Sets/Pairs

DESCRIPTION	REACT	CLONE	APPS	REG	CONTENTS	SIZE	CAT. NO.
<b>Annexin V FITC Fluorescence Microscopy Kit</b>			IF	RUO	Annexin V-FITC, Annexin V Binding Buffer, and PBS Buffer	25 Slides	<b>550911</b>
<b>Annexin V FITC Apoptosis Detection Kit I</b>			FCM	RUO	Annexin V-FITC, Propidium Iodide Staining Solution, Annexin V Binding Buffer	100 tests	<b>556547</b>
<b>Annexin V FITC Apoptosis Detection Kit II</b>			FCM	RUO	Purified Recombinant Annexin V, Annexin V-FITC, Propidium Iodide Staining Solution, Annexin V Binding Buffer	100 tests	<b>556570</b>
<b>Annexin V PE Apoptosis Detection Kit I</b>			FCM	RUO	Annexin V-PE, 7-AAD, and Annexin V Binding Buffer	100 tests	<b>559763</b>
<b>Apoptosis Detection Kit (APO-BRDU)</b>			IC/FCM	RUO	FITC-Labeled Anti-BrdU mAb, PI/RNase Staining Buffer, Reaction Buffer, Rinsing Buffer, Wash Buffer, Br-dUTP, TdT Enzyme, Negative Control Cells, Positive Control Cells	60 tests	<b>556405</b>
<b>Apoptosis Detection Kit (APO-DIRECT)</b>			IC/FCM	RUO	FITC-dUTP, PI/RNase Staining Buffer, Reaction Buffer, Rinsing Buffer, Wash Buffer, TdT Enzyme, Negative Control Cells, Positive Control Cells	50 tests	<b>556381</b>
<b>Apoptosis I Sampler Kit</b>			IF, WB	RUO	Apaf-1, Bad, Bax, Bcl-2, Bcl-x, BRUCE, CAS, hILP/XIAP, Nip1, p53	10 µg each	<b>612741</b>
<b>Apoptosis II Sampler Kit</b>			IF, WB	RUO	Caspase-2/ICH-1L, Caspase-3/CPP32, Caspase-7/MCH-3, DFF45, FADD, Fas/CD95/APO-1, PARP, RIP, TRADD	10 µg each	<b>612743</b>
<b>Apoptotic Jurkat Lysate Set I</b>			WB	RUO	Jurkat Control Lysate and Camptothecin-treated Jurkat Lysate	500 µg each	<b>550959</b>
<b>Bcl-2 Related Sampler Kit</b>			IF, WB	RUO	Bad, BAG-1, Bax, Bcl-2, Bcl-x, Bcl-x, Beclin, Bid	10 µg each	<b>612742</b>
<b>BrdU APC Flow Kit</b>			IC/FCM	RUO		50 tests	<b>552598</b>
			IC/FCM	RUO		4 x 50 tests	<b>557892</b>
<b>BrdU FITC Flow Kit</b>			IC/FCM	RUO		50 tests	<b>559619</b>
			IC/FCM	RUO		4 x 50 tests	<b>557891</b>
<b>BrdU In-Situ Detection Kit</b>			IHC(Zn), IHC(F), IHC(Fr)	RUO	Fixation Buffer, Diluent Buffer, BD™ Retrieval A Antigen Retrieval Solution, biotinylated anti-BrdU antibody, ready-to-use Streptavidin-Horseradish peroxidase (SAV-HRP) Solution, DAB Buffer, DAB Chromogen, and Control Slides	50 tests	<b>550803</b>
<b>BrdU In-Situ Detection Kit II</b>			IHC(Zn), IHC(F), IHC(Fr)	RUO	Fixation Buffer, Diluent Buffer, BD™ Retrieval A antigen retrieval solution, biotinylated anti-BrdU antibody, ready-to-use Streptavidin-Horseradish peroxidase (SAV-HRP) solution, DAB Buffer, DAB Chromogen, and Control Slides	200 tests	<b>551321</b>
<b>Caspase-3 Assay Kit</b>			SF, FA	RUO	PBS Buffer, Cell Lysis Buffer, HEPES Buffer, Caspase-3 Fluorogenic Substrate, Caspase-3 Inhibitor	100 tests	<b>556485</b>
<b>Caspase-3, Active Form, ELISA Pair</b>	Hu	C92-605, 19	Rab IgG, Mouse IgG <sub>2a</sub>	ELISA	Purified	Reagents for 10 plates	<b>550578</b>
<b>Caspase-3, Active Form, Enzyme Set</b>				FA, SF	Set	20 tests	<b>556473</b>

Kits/Sets/Pairs

DESCRIPTION	REACT	CLONE	ISOTYPE	APPS	REG	CONTENTS	SIZE	CAT. NO.
Caspase-3, Active Form, mAb Apoptosis Kit : FITC	Hu, Ms	C92-605	Rab IgG	IC/FCM	RUO	FITC-conjugated Monoclonal Rabbit Anti-Active Caspase-3 Antibody, BD Cytotfix/Cytoperm™ Fixation/Permeabilization Solution, and BD Perm/Wash™ Buffer	100 tests	550480
Caspase-3, Active Form, mAb Apoptosis Kit : PE	Hu, Ms	C92-605	Rab IgG	IC/FCM	RUO	PE-conjugated Monoclonal Rabbit Anti-Active Caspase-3 Antibody, BD Cytotfix/Cytoperm™ Fixation/Permeabilization Solution, and BD Perm/Wash™ Buffer	100 tests	550914
Cell Cycle Kit				Bioimg	RUO		96 assays	558662
Chaperone Sampler Kit				IF, WB	RUO	BIP/GRP78, Calnexin, ERp72, HSF4, Hsp70, Hsp90, Hsp110, PDI, ST11/Hop-p60	10 µg each	611431
Human CD253 ELISA Set	Hu			ELISA	RUO		Reagents for 20 plates	550948
BD Cycletest™ Plus DNA Reagent Kit				FCM	RUO(GMP)	Solution A: trypsin in spermine tetrahydrochloride detergent buffer; Solution B: RNase A and trypsin inhibitor in spermine buffer; Solution C: Propidium Iodide (PI) in spermine buffer; Buffer Solution: dimethylsulfoxide (DMSO) in sucrose-sodium citrate	40 tests	340242
Human Granzyme B ELISPOT Set	Hu			ELISPOT	RUO		10 plates	552572
Human LT-α ELISA Set	Hu			ELISA	RUO		Reagents for 20 plates	550995
BD™ MitoScreen (JC-1)				IC/FCM	RUO	JC-1 Dye and Assay Buffer	100 tests	551302
Human TNF ELISA Kit II	Hu			ELISA	RUO		2 plates	550610
Human TNF ELISA Set	Hu			ELISA	RUO		Reagents for 20 plates	555212
Mouse TNF (Mono/Mono) ELISA Set	Ms			ELISA	RUO		Reagents for 20 plates	555268
Mouse TNF (Mono/Mono) ELISA Set II	Ms			ELISA	RUO		Reagents for 20 plates	558534
Mouse TNF (Mono/Poly) ELISA Kit II	Ms			ELISA	RUO		2 plates	559732
Mouse TNF ELISA Kit	Ms			ELISA	RUO		2 plates	560479
Rat TNF ELISA Kit	Rat			ELISA	RUO		2 plates	550734
Rat TNF ELISA Set	Rat			ELISA	RUO		Reagents for 20 plates	558535
Human TNF ELISPOT Pair	Hu			ELISPOT	RUO		5 plates	551882
Human TNF ELISPOT Set	Hu			ELISPOT	RUO		10 plates	551446
Mouse TNF ELISPOT Pair	Ms			ELISPOT	RUO		5 plates	551875
Mouse TNF ELISPOT Set	Ms			ELISPOT	RUO		10 plates	551491

## Apoptosis Product List

### CBA Reagents

DESCRIPTION	REACT	APPS	REG	SIZE	CAT. NO.
Human Basic FGF Flex Set (Bead C5)	Hu	FCM	RUO	100 tests	558327
Human CD178 (Fas Ligand) Flex Set (Bead C6)	Hu	FCM	RUO	100 tests	558330
Human Granzyme A Flex Set (Bead D9)	Hu	FCM	RUO	100 tests	560299
Human Granzyme B Flex Set (Bead D7)	Hu	FCM	RUO	100 tests	560304
Human LT- $\alpha$ Flex Set (Bead D5)	Hu	FCM	RUO	100 tests	560083
Human TNF Flex Set (Bead D9)	Hu, NHP	FCM	RUO	100 tests	558273
Human TNF Flex Set (Bead C4)	Hu	FCM	RUO	100 tests	560112
Human TNF Enhanced Sensitivity Flex Set (Bead C4)	Hu	FCM	RUO	100 tests	561516
Mouse TNF Flex Set (Bead C8)	Ms	FCM	RUO	100 tests	558299
Rat TNF Flex Set (Bead C8)	Rat	FCM	RUO	100 tests	558309
Human Soluble Protein Master Buffer Kit	Hu	FCM	RUO	100 tests	558264
		FCM	RUO	500 tests	558265
Mouse/Rat Soluble Protein Master Buffer Kit	Ms, Rat	FCM	RUO	100 tests	558266
		FCM	RUO	500 tests	558267

## Apoptosis Product List

### Apoptosis Reagents

DESCRIPTION	REACT	CLONE	ISOTYPE	APPS	REG	FORMAT	SIZE	CAT. NO.
A20	Hu	E5-1619	Ms IgG <sub>1</sub> , $\lambda$	WB	RUO	Purified	50 $\mu$ g	550859
AIF (Apoptosis-inducing factor)	Ms, Rat, Hu	Polyclonal	Rab Ig	WB	RUO	Purified	100 $\mu$ g	551429
AIP1	Ms, Rat	49	Ms IgG <sub>1</sub>	WB	RUO	Purified	50 $\mu$ g	611620
				WB	RUO	Purified	150 $\mu$ g	611621
ALDH	Hu	44	Ms IgG <sub>1</sub>	IF, WB	RUO	Purified	50 $\mu$ g	611194
				IF, WB	RUO	Purified	150 $\mu$ g	611195
Annexin V				FCM	RUO	Purified	100 $\mu$ g	556416
				FCM	RUO	Biotin	100 tests	556418
				FCM	RUO	Biotin	200 tests	556417
				FCM	RUO	APC	25 tests	561012
				FCM	RUO	APC	100 tests	550474
				FCM	RUO	APC	200 tests	550475
				FCM	RUO	Cy <sup>TM</sup> 5	100 tests	559933
				FCM	RUO	Cy5	200 tests	559934
				FCM	RUO	Cy <sup>TM</sup> 5.5	100 tests	559935
				FCM	RUO	FITC	25 tests	560931
				FCM	RUO	FITC	100 tests	556420
				FCM	RUO	FITC	200 tests	556419
				FCM	RUO	BD Horizon V450	50 tests	560506
				FCM	RUO	BD Horizon V500	50 tests	561501
AOX1	Hu, Ms, Rat	7	Ms IgG <sub>1</sub>	FCM	RUO	PE	25 tests	560930
				FCM	RUO	PE	100 tests	556422
				FCM	RUO	PE	200 tests	556421
				WB	RUO	Purified	50 $\mu$ g	611494

Apoptosis Reagents

DESCRIPTION	REACT	CLONE	ISOTYPE	APPS	REG	FORMAT	SIZE	CAT. NO.
<b>Apaf-1</b>	Hu	24	Ms IgG <sub>1</sub>	WB, IF	RUO	Purified	150 µg	611365
				WB, IF	RUO	Purified	50 µg	611364
	Hu, Ms	Polyclonal	Rab Ig	WB	RUO	Purified	50 µg	559683
<b>Bad</b>	Hu, Ms, Rat	48	Ms IgG <sub>2b</sub>	IF, WB	RUO	Purified	50 µg	610391
				IF, WB	RUO	Purified	150 µg	610392
				IF	RUO	FITC	50 µg	610393
				IF	RUO	FITC	150 µg	610394
				IF	RUO	TRITC	50 µg	610395
				IF	RUO	TRITC	150 µg	610396
<b>BAG-1</b>	Hu	19	Ms IgG <sub>1</sub>	WB	RUO	Purified	50 µg	611868
<b>Bak</b>	Hu	G317-2	Ms IgG <sub>1</sub>	WB	RUO	Purified	0.1 mg	556382
		Polyclonal	Rab Ig	WB	RUO	Serum	0.1 mL	556396
<b>basic FGF</b>	Chick, Dog, Hu, Ms, Rat	3	Ms IgG <sub>1</sub>	IF, WB	RUO	Purified	150 µg	610871
				IF, IHC, IP, WB	RUO	Purified	50 µg	610072
				IF, IHC, IP, WB	RUO	Purified	150 µg	610073
<b>Bax</b>	Dog, Hu	3	Ms IgG <sub>1</sub>	IF, IP, WB	RUO	Purified	50 µg	610982
				IF, IP, WB	RUO	Purified	150 µg	610983
	Hu, Ms, Rat	6A7	Ms IgG <sub>1</sub> , κ	IP, WB	RUO	Purified	0.1 mg	556467
	Hu	Polyclonal	Rab Ig	WB	RUO	Serum	0.1 mL	554104
	Ms, Rat	Polyclonal	Rab Ig	IHC(F), IHC(Fr), IP, WB	RUO	Serum	0.1 mL	554106
<b>Bcl-2</b>	Ms	3F11	Ar Ham IgG1	FCM, IF, IHC(Fr), IP, WB	RUO	Purified	0.1 mg	554218
				FCM	RUO	FITC Set	100 tests	554221
				FCM	RUO	PE Set	100 tests	556537
	Hu	6C8	Ar Ham IgG2, κ	WB	RUO	Purified	50 µg	551051
				WB	RUO	Purified	150 µg	551052
				FCM	RUO	FITC Set	100 tests	554234
				FCM	RUO	PE Set	100 tests	556536
				IC/FCM, IHC(Fr), WB, IHC(P)	RUO	Purified	50 µg	551107
				IC/FCM, IHC(Fr), WB, IHC(P)	RUO	Purified	150 µg	551109
	Ms, Rat	100	Ms IgG <sub>1</sub>	FCM, IC	RUO(GMP)	FITC	50 tests	340575
				IC/FCM	RUO	FITC Set	100 tests	556357
				IC/FCM	RUO	BD Horizon V450	50 tests	560637
				FCM, IC	RUO(GMP)	PE	50 tests	340576
				IC/FCM	RUO	PE Set	100 tests	556535
				WB	RUO	Purified	50 µg	551097
				WB	RUO	Purified	150 µg	551098
				IF, IHC, IP, WB	RUO	Purified	50 µg	610538
Chick, Dog, Hu, Ms, Rat	7	Ms IgG <sub>1</sub>	IF, IHC, IP, WB	RUO	Purified	150 µg	610539	
			IF, IHC, IP, WB	RUO	Purified	50 µg	610538	
			IF, IHC, IP, WB	RUO	Purified	150 µg	610539	
Ms, Rat	Polyclonal	Rab Ig	WB	RUO	Serum	0.1 mL	554279	
			IHC(F), IHC(Fr), IP, WB	RUO	Serum	0.1 mL	554087	
<b>Bcl-10</b>	Hu	151	Ms IgG <sub>1</sub> , κ	FCM	RUO	PE Set	100 tests	552881
<b>Bcl-w</b>	Ms, Hu	16H12	Rat IgG <sub>2a</sub> , κ	WB	RUO	Purified	50 µg	550559
<b>Bcl-x</b>	Hu, Ms	2H12	Ms IgG <sub>2a</sub>	WB	RUO	Purified	50 µg	551020
				WB	RUO	Purified	150 µg	551022
	Chick, Ms, Rat	4	Ms IgG <sub>2b</sub>	IF, IHC, WB	RUO	Purified	50 µg	610209
				IF, IHC, WB	RUO	Purified	150 µg	610210
	Hu, Ms, Rat	44	Ms IgG <sub>1</sub>	IF, IHC, WB	RUO	Purified	50 µg	610746
				IF, IHC, WB	RUO	Purified	150 µg	610747
	Chick, Dog, Hu, Ms, Rat	Polyclonal	Rab IgG	IF, IHC, WB	RUO	Purified	50 µg	610211
				IF, IHC, WB	RUO	Purified	150 µg	610212
	Hu, Ms	Polyclonal	Rab Ig	IHC(F), IHC(Fr), WB	RUO	Serum	0.1 mL	551269
<b>Bcl-xL/S</b>	Hu, Ms	Polyclonal	Rab Ig	IHC(F), IHC(Fr), IHC(P), WB	RUO	Serum	0.1 mL	556361
<b>Beclin</b>	Ms, Rat, Hu, Dog, Chick	20	Ms IgG <sub>2a</sub>	WB	RUO	Purified	50 µg	612112
				WB	RUO	Purified	150 µg	612113

# Apoptosis Product List

## Apoptosis Reagents

DESCRIPTION	REACT	CLONE	ISOTYPE	APPS	REG	FORMAT	SIZE	CAT. NO.
<b>Bid</b>	Hu	7	Ms IgG <sub>1</sub>	IF, WB	RUO	Purified	50 µg	<b>611528</b>
	Ms	40	Ms IgG <sub>1</sub>	WB	RUO	Purified	50 µg	<b>611866</b>
<b>Bik</b>	Hu	C33-1	Ms IgG <sub>1</sub> κ	WB	RUO	Purified	0.1 mg	<b>557040</b>
<b>Bim</b>	Hu, Ms, Rat	Polyclonal	Rab Ig	WB	RUO	Purified	50 µg	<b>559685</b>
<b>Blys</b>	Hu	H32-406	Ms IgG <sub>1</sub> κ	ELISA Cap.	RUO	Purified	0.1 mg	<b>558289</b>
		H32-544	Ms IgG <sub>1</sub> κ	ELISA Det.	RUO	Biotin	0.1 mg	<b>558290</b>
<b>BrdU</b>	Hu	3D4	Ms IgG <sub>1</sub> κ	IHC(Fr), IC/FCM	RUO	Purified	0.1 mg	<b>555627</b>
				Bioimg	RUO	Alexa Fluor® 488	100 tests	<b>558599</b>
				Bioimg	RUO	Alexa Fluor® 555	100 tests	<b>560210</b>
				Bioimg	RUO	Alexa Fluor® 647	100 tests	<b>560209</b>
				FCM, IC/FCM	RUO	FITC Set	100 tests	<b>556028</b>
	Hu, Ms	3D4	Ms IgG <sub>1</sub> κ	FCM, IC/FCM	RUO	PE Set	100 tests	<b>556029</b>
				IC/FCM	RUO	BD Horizon V450	50 µg	<b>560810</b>
				IC/FCM	RUO	PerCP	50 tests	<b>560808</b>
				IC/FCM	RUO	PerCP-Cy5.5	50 tests	<b>560809</b>
				FCM	RUO(GMP)	Purified	100 tests	<b>347580</b>
Hu	B44	Ms IgG <sub>1</sub> κ	FCM	RUO(GMP)	FITC	100 tests	<b>347583</b>	
			FCM	RUO(GMP)	FITC	100 tests	<b>347583</b>	
<b>BRUCE</b>	Dog, Hu, Ms, Rat	4	Ms IgG <sub>1</sub>	IF, WB	RUO	Purified	50 µg	<b>611192</b>
				IF, WB	RUO	Purified	150 µg	<b>611193</b>
<b>Btf</b>	Hu	5	Ms IgG <sub>1</sub>	IF, WB	RUO	Purified	50 µg	<b>611726</b>
<b>CAS</b>	Dog, Frog, Hu, Ms, Rat	24	Ms IgG <sub>1</sub>	IF, IP, WB	RUO	Purified	50 µg	<b>610482</b>
<b>Caspase-2 (Ich-1L)</b>	Hu	35	Ms IgG <sub>1</sub>	IF, WB	RUO	Purified	50 µg	<b>611022</b>
				IF, WB	RUO	Purified	150 µg	<b>611023</b>
				G310-1248	Ms IgG <sub>1</sub>	Bioimg, WB	RUO	Purified
<b>Caspase-3</b>	Hu	19	Ms IgG <sub>2b</sub>	IF, IP, WB	RUO	Purified	50 µg	<b>610322</b>
				IF, IP, WB	RUO	Purified	150 µg	<b>610323</b>
	Ms	46	Ms IgG <sub>1</sub>	IF, IP, WB	RUO	Purified	50 µg	<b>611048</b>
				IF, IP, WB	RUO	Purified	150 µg	<b>611049</b>
<b>Caspase-3, Active Form</b>	Hu	C92-605	Rab IgG	IC/FCM	RUO	Alexa Fluor® 647	50 tests	<b>560626</b>
				IC/FCM	RUO	FITC	25 tests	<b>560901</b>
				IC/FCM	RUO	BD Horizon V450	50 tests	<b>560627</b>
				IC/FCM	RUO	PE	25 tests	<b>561011</b>
				IC/FCM	RUO	PE	100 tests	<b>550821</b>
	Hu, Ms	C92-605	Rab IgG	IHC(Fr), IP	RUO	Purified	25 µg	<b>559565</b>
				IC/FCM	RUO	Biotin	100 tests	<b>550557</b>
				IC/FCM	RUO	FITC	100 tests	<b>559341</b>
Polyclonal	Rab IgG	IHC(Fr)	RUO	Biotin	0.1 mg	<b>557038</b>		
		IC/FCM	RUO	PE	100 tests	<b>557091</b>		
<b>Caspase-4</b>	Hu, Ms, Rat	B25-1	Ms IgG <sub>1</sub> κ	WB	RUO	Purified	0.1 mg	<b>556459</b>
<b>Caspase-6 (Mch2α)</b>	Hu	B93-4	Ms IgG <sub>1</sub> κ	WB	RUO	Purified	0.1 mg	<b>556581</b>
<b>Caspase-7</b>	Hu, Ms	10-1-62	Ms IgG <sub>1</sub> κ	IP, WB	RUO	Purified	50 µg	<b>551238</b>
				IP, WB	RUO	Purified	150 µg	<b>551239</b>
	Dog, Hu	51	Ms IgG <sub>2b</sub>	IF, WB	RUO	Purified	50 µg	<b>610812</b>
				Hu	8-1-47	Ms IgG <sub>1</sub> κ	IP, WB	RUO
	Hu	B94-1	Ms IgG <sub>1</sub> κ	IP, WB	RUO	Purified	0.1 mg	<b>556541</b>
				IP, WB	RUO	Purified	0.1 mg	<b>556541</b>
<b>Caspase-8</b>	Hu	3-1-9	Ms IgG <sub>1</sub> κ	IP, WB	RUO	Purified	50 µg	<b>551242</b>
				IP, WB	RUO	Purified	150 µg	<b>551243</b>
		4-1-20	Ms IgG <sub>1</sub> κ	WB	RUO	Purified	50 µg	<b>551244</b>
				WB	RUO	Purified	150 µg	<b>551245</b>
	Polyclonal	B9-2	Ms IgG <sub>2a</sub> κ	WB	RUO	Purified	0.1 mg	<b>556466</b>
				Rab Ig	RUO	Serum	0.1 mL	<b>559932</b>
		WB	Rab Ig	WB	RUO	Serum	0.1 mL	<b>551234</b>
				WB	RUO	Serum	0.1 mL	<b>551234</b>
<b>Caspase-9</b>	Hu	2-22	Ms IgG <sub>1</sub> κ	WB	RUO	Purified	50 µg	<b>551246</b>
				WB	RUO	Purified	150 µg	<b>551247</b>
		B40	Ms IgG <sub>1</sub> κ	WB	RUO	Purified	0.1 mg	<b>556510</b>

Apoptosis Reagents

DESCRIPTION	REACT	CLONE	ISOTYPE	APPS	REG	FORMAT	SIZE	CAT. NO.		
<b>Caspase-12</b>	Ms, Rat, Hu	Polyclonal	Rab IgG	WB	RUO	Purified	0.1 mL	<b>551430</b>		
<b>CD95</b>	Chick, Dog, Hu, Ms, Rat	13	Ms IgG <sub>1</sub>	IHC(F)*, WB	RUO	Purified	50 µg	<b>610197</b>		
				IHC(F)*, WB	RUO	Purified	150 µg	<b>610198</b>		
	Bab, Cyno, Rhe	DX2	Ms IgG <sub>1</sub> , κ	FCM	RUO	FITC	50 tests	<b>556640</b>		
				FCM	RUO	PE	50 tests	<b>556641</b>		
	Hu	DX2	Ms IgG <sub>1</sub> , κ	FCM, FA	RUO	NA/LE	0.5 mg	<b>555670</b>		
				FCM, IHC(Fr)	RUO	Purified	0.1 mg	<b>555671</b>		
				FCM	RUO	Biotin	100 tests	<b>555672</b>		
				FCM	RUO(GMP)	APC	100 tests	<b>340481</b>		
				FCM	RUO	APC	100 tests	<b>558814</b>		
				FCM	RUO(GMP)	FITC	50 tests	<b>340479</b>		
				FCM	RUO	FITC	100 tests	<b>555673</b>		
				FCM	RUO(GMP)	PE	50 tests	<b>340480</b>		
				FCM	RUO	PE	100 tests	<b>555674</b>		
				FCM	RUO	PE-Cy5	100 tests	<b>559773</b>		
	Ms	E059.1	Ms IgM, κ	FCM, FA	RUO	Purified	0.1 mg	<b>550042</b>		
		G254-274	Ms IgG <sub>1</sub>	WB	RUO	Purified	0.1 mg	<b>556370</b>		
	Ms	Jo2	Ar Ham IgG2, λ2	FCM	RUO	NA/LE	0.5 mg	<b>554254</b>		
				FCM	RUO	Purified	500 µg	<b>554255</b>		
				FCM	RUO	Biotin	0.5 mg	<b>554256</b>		
				FCM	RUO	FITC	0.5 mg	<b>554257</b>		
FCM				RUO	PE	0.2 mg	<b>554258</b>			
FCM				RUO	PE-Cy7™	0.1 mg	<b>557653</b>			
<b>CD120a</b>	Hu	MABTNFR1-A1	Ms IgG <sub>1</sub> , κ	ELISA Cap.	RUO	Purified	0.5 mg	<b>552535</b>		
			FCM	RUO	Purified	0.5 mg	<b>550514</b>			
			MABTNFR1-B1	Ms IgG <sub>2b</sub> , κ	FCM	RUO	Biotin	0.5 mg	<b>550900</b>	
	Ms	55R-170	Ar Ham IgG1, κ	ELISA Det., FCM	RUO	Biotin	0.5 mg	<b>552536</b>		
				Block	RUO	NA/LE	0.25 mg	<b>557535</b>		
				55R-286	Ar Ham IgG1, κ	ELISA Cap., FCM	RUO	Purified	0.5 mg	<b>559915</b>
<b>CD120b</b>	Hu	hTNFR-M1	Rat IgG <sub>2b</sub> , κ	FCM	RUO	Purified	0.5 mg	<b>551311</b>		
			ELISA Det., FCM	RUO	Biotin	0.5 mg	<b>552477</b>			
			FCM	RUO	PE	100 tests	<b>552418</b>			
	Ms	TR75-54	Ar Ham IgG	Block	RUO	NA/LE	0.25 mg	<b>557534</b>		
				TR75-89	Ar Ham IgG1, λ3	FCM, IP/WB	RUO	Purified	0.5 mg	<b>559916</b>
						FCM	RUO	Biotin	0.5 mg	<b>550476</b>
FCM	RUO	PE	0.2 mg	<b>550086</b>						
<b>CD178</b>	Hu	NOK-1	Ms IgG <sub>1</sub>	FA, FCM	RUO	NA/LE	0.25 mg	<b>556371</b>		
				IP, FCM	RUO	Purified	0.1 mg	<b>556372</b>		
				FCM	RUO	Biotin	100 tests	<b>556374</b>		
				FCM	RUO	Biotin	0.1 mg	<b>556373</b>		
	Ms	NOK-2	Ms IgG <sub>2a</sub>	IP	RUO	NA/LE	0.25 mg	<b>556375</b>		
				IP	RUO	Purified	0.1 mg	<b>556376</b>		
				G247-4	Ms IgG <sub>1</sub>	IHC(Fr), IP, WB	RUO	Purified	0.1 mg	<b>556387</b>
				Kay-10	Ms IgG <sub>2b</sub> , κ	FCM, IHC(F)	RUO	Biotin	0.5 mg	<b>553853</b>
	FCM	RUO	PE			0.2 mg	<b>553854</b>			
	Ms, Rat	MFL3	Ar Ham IgG1, κ	Block, FCM	RUO	NA/LE	0.5 mg	<b>555290</b>		
				FCM	RUO	Purified	0.5 mg	<b>555291</b>		
				FCM	RUO	Biotin	0.5 mg	<b>555292</b>		
				FCM	RUO	PE	0.2 mg	<b>555293</b>		
		MFL4	Ar Ham IgG3, κ	Block, FCM	RUO	NA/LE	0.5 mg	<b>555021</b>		
				FCM	RUO	Purified	0.5 mg	<b>555022</b>		
				FCM	RUO	Biotin	0.5 mg	<b>556998</b>		
FCM				RUO	Biotin	0.5 mg	<b>556998</b>			

# Apoptosis Product List

## Apoptosis Reagents

DESCRIPTION	REACT	CLONE	ISOTYPE	APPS	REG	FORMAT	SIZE	CAT. NO.
CD253	Hu	B35-1	Ms IgG <sub>2b</sub> , κ	WB	RUO	Purified	0.1 mg	556468
		RIK-1	Ms IgG <sub>1</sub>	FCM	RUO	Purified	0.1 mg	550517
		RIK-2	Ms IgG <sub>1</sub>	Block, FA, FCM	RUO	NA/LE	0.25 mg	550912
				FCM	RUO	Purified	0.1 mg	550515
				FCM	RUO	Biotin	0.2 mg	550431
	FCM	RUO	PE	0.1 mg	550516			
Ms	N2B2	Rat IgG <sub>2b</sub> , κ	FCM	RUO	Purified	0.1 mg	550320	
CD262	Ms	MD5-1	Ar Ham IgG2, κ	FCM	RUO	Purified	0.1 mg	557868
Cdc25C	Hu	C2-2	Ms IgG <sub>1</sub>	Bioimg, WB	RUO	Purified	0.1 mg	556576
Cdc27	Dog, Hu, Ms, Rat	35	Ms IgG <sub>2b</sub>	IF, IP, WB	RUO	Purified	50 µg	610454
				IF, IP, WB	RUO	Purified	150 µg	610455
Cdc34	Chick, Dog, Hu, Ms, Rat	17	Ms IgG <sub>2a</sub>	IF, WB	RUO	Purified	50 µg	610249
Cdc37	Dog, Hu, Ms, Rat	15	Ms IgG <sub>1</sub>	IF, WB	RUO	Purified	50 µg	610576
Cdc42	Dog, Hu, Ms, Rat	44	Ms IgG <sub>1</sub>	WB	RUO	Purified	50 µg	610928
				WB	RUO	Purified	150 µg	610929
Cdk1	Hu, Ms, Rat	1	Ms IgG <sub>1</sub>	IF, IHC(F)*, IP, WB	RUO	Purified	50 µg	610037
				IF, IHC(F)*, IP, WB	RUO	Purified	150 µg	610038
	Hu, Ms	Polyclonal	Rab Ig	IP, WB	RUO	Serum	0.1 mL	558900
Cdk1/Cdc2 (pY15)	Hu, Ms, Rat	44	Ms IgG <sub>1</sub>	IF, WB	RUO	Purified	50 µg	612306
				IF, WB	RUO	Purified	150 µg	612307
Cdk2	Dog, Hu, Ms, Rat	55	Ms IgG <sub>2a</sub>	Bioimg, IF, IHC, IP, WB	RUO	Purified	50 µg	610145
				Bioimg, IF, IHC, IP, WB	RUO	Purified	150 µg	610146
	Hu	Polyclonal	Rab Ig	WB	RUO	Serum	100 µL	551272
				WB	RUO	Serum	0.1 mL	558896
Cdk7	Hu	MO-1	Ms IgG <sub>2b</sub> , κ	IHC(Fr), WB	RUO	Purified	0.1 mg	556345
CHD3	Hu, Ms, Rat	44	Ms IgG <sub>1</sub>	IF, WB	RUO	Purified	50 µg	611846
				IF, WB	RUO	Purified	150 µg	611847
Chk2	Hu, Ms, Rat	19	Ms IgG <sub>1</sub>	IF, WB	RUO	Purified	50 µg	611570
				IF, WB	RUO	Purified	150 µg	611571
Cip1 (WAF1)	Hu	70	Ms IgG <sub>2a</sub>	IF, WB	RUO	Purified	50 µg	610233
				IF, WB	RUO	Purified	150 µg	610234
Cyclin A	Hu	25	Ms IgG <sub>1</sub>	Bioimg, IF, WB	RUO	Purified	50 µg	611268
				Bioimg, IF, WB	RUO	Purified	150 µg	611269
		BF683	Ms IgE	FCM, IP, WB	RUO	Purified	100 µg	554174
				FCM, IP, WB	RUO	Purified	250 µg	554175
				FCM	RUO	FITC Set	100 tests	554107
				FCM	RUO	PE Set	100 tests	550913
Cyclin A1	Hu	B88-2	Ms IgG <sub>1</sub> , κ	WB	RUO	Purified	100 µg	556600
Cyclin B	Hu, Rat	18	Ms IgG <sub>1</sub>	IF, IHC(F)*, WB	RUO	Purified	50 µg	610219
				IF, IHC(F)*, WB	RUO	Purified	150 µg	610220
Cyclin B1	Hu	GNS-11	Ms IgG <sub>2a</sub>	Bioimg, WB	RUO	Purified	100 µg	554178
				Bioimg, WB	RUO	Purified	250 µg	554179
		Polyclonal	Rab	IP, WB	RUO	Serum	100 µL	558899
Cyclin B1 (a.a 1-21)	Hu, Ms	GNS-1	Ms IgG <sub>1</sub>	Bioimg, FCM, IF, IHC, IP, WB	RUO	Purified	100 µg	554176
				Bioimg, FCM, IF, IHC, IP, WB	RUO	Purified	250 µg	554177
				FCM	RUO	FITC Set	100 tests	554108
				FCM	RUO	PE Set	100 tests	550783
Cyclin C	Hu, Ms	Polyclonal	Rab Ig	IP, WB	RUO	Serum	100 µg	558903
Cyclin D1	Hu	DCS-6	Ms IgG <sub>2a</sub>	WB	RUO	Purified	100 µg	556470
				FCM, IHC, IP, WB	RUO	Purified	100 µg	554180
		G124-326	Ms IgG <sub>1</sub>	FCM, IHC, IP, WB	RUO	Purified	250 µg	554181
				FCM	RUO	FITC Set	100 tests	554109

Apoptosis Reagents

DESCRIPTION	REACT	CLONE	ISOTYPE	APPS	REG	FORMAT	SIZE	CAT. NO.
<b>Cyclin D2</b>	Hu	G132-43	Ms IgG <sub>2b</sub>	IP, WB	RUO	Purified	100 µg	554200
				IP, WB	RUO	Purified	250 µg	554201
<b>Cyclin D3</b>	Dog, Hu, Ms, Rat	1	Ms IgG <sub>2b</sub>	IF, IHC, IP, WB	RUO	Purified	50 µg	610279
				IF, IHC, IP, WB	RUO	Purified	150 µg	610280
	Hu	G107-565	Ms IgG <sub>1</sub>	FCM, WB	RUO	Purified	100 µg	554195
				FCM	RUO	FITC Set	100 tests	554111
<b>Cyclins D1/D2/D3</b>	Hu	G124-259	Ms IgG <sub>1</sub>	FCM, IP, WB	RUO	Purified	100 µg	554203
<b>Cyclin E</b>	Hu	HE12	Ms IgG <sub>1</sub>	Bioimg, WB	RUO	Purified	50 µg	551159
				Bioimg, WB	RUO	Purified	150 µg	551160
		HE67	Ms IgG <sub>2b</sub>	IP	RUO	Purified	100 µg	554192
<b>Cyclin F</b>	Hu	B74-2	Ms IgG <sub>1</sub> , κ	WB	RUO	Purified	100 µg	556598
<b>Cytochrome c</b>	Hu, Ms, Rat	6H2.B4	Ms IgG <sub>1</sub> , κ	Bioimg, IP	RUO	Purified	0.1 mg	556432
	Hu, Ms, Rat, Hs, Pg	7H8.2C12	Ms IgG <sub>2b</sub> , κ	WB	RUO	Purified	0.1 mg	556433
	Hu	6H2.B4	Mouse IgG <sub>1</sub>	Bioimg	RUO	Alexa Fluor® 488	100 tests	560263
				Bioimg	RUO	Alexa Fluor® 555	100 tests	558700
				Bioimg	RUO	Alexa Fluor® 647	100 tests	558709
<b>D4-GDI</b>	Hu	Polyclonal	Rab Ig	WB	RUO	Serum	0.1 mL	556498
<b>DAP Kinase</b>	Hu	17	Ms IgG <sub>1</sub>	IF, IHC, WB	RUO	Purified	50 µg	610290
				IF, IHC, WB	RUO	Purified	150 µg	610291
<b>DAP3</b>	Frog, Hu, Ms, Rat	10	Ms IgG <sub>1</sub>	IF, IHC, WB	RUO	Purified	50 µg	610662
<b>DFF40/CAD (a.a. 203-218)</b>	Hu, Ms, Rat	Polyclonal	Rab Ig	WB	RUO	Purified	50 µg	550603
<b>DFF45</b>	Hu	19	Ms IgG <sub>1</sub>	IF, WB	RUO	Purified	50 µg	611036
<b>DNA Ligase III</b>	Dog, Hu, Ms, Rat	7	Ms IgG <sub>1</sub>	WB	RUO	Purified	50 µg	611876
				WB	RUO	Purified	150 µg	611877
<b>DNA-PK (p350)</b>	Hu	4F10C5	Ms IgG <sub>1</sub> , κ	IP, WB	RUO	Purified	0.1 mg	556456
<b>DNA-PKcs (p350)</b>	Hu	6	Mouse IgG <sub>2b</sub>	IF, IHC, WB	RUO	Purified	50 µg	610804
<b>DNA Polymerase δ</b>	Hu, Rat	22	Ms IgG <sub>1</sub>	IF, WB	RUO	Purified	50 µg	610972
<b>DNA Polymerase ε catalytic</b>	Hu	34	Ms IgG <sub>2b</sub>	IF, WB	RUO	Purified	50 µg	611238
<b>DNA Topoisomerase I</b>	Hu	C-21.2	Ms IgM	WB	RUO	Purified	0.1 mg	556597
<b>E2F-1</b>	Hu, Ms, Rat	KH95/E2F	Ms IgG <sub>2a</sub>	IP, WB	RUO	Purified	0.1 mg	554213
<b>E2F-2</b>	Hu	TFE22	Ms IgG <sub>1</sub>	WB	RUO	Purified	0.1 mg	556525
<b>E2F-3</b>	Hu	TFE31	Ms IgG <sub>1</sub>	WB	RUO	Purified	0.1 mg	556526
<b>ERCC1</b>	Hu	8F1	Ms IgG <sub>2b</sub>	WB	RUO	Purified	0.1 mg	556452
<b>FADD</b>	Hu	1	Ms IgG <sub>1</sub>	IF, WB	RUO	Purified	50 µg	610399
				IF, WB	RUO	Purified	150 µg	610400
				IP, WB	RUO	Purified	0.1 mg	556402
<b>FADD (p5194)</b>	Hu	J119-857.36	Mouse (BALB/c) IgG <sub>1</sub> , κ	WB	RUO	Purified	0.1 mg	558370
<b>FBP</b>	Dog, Hu, Ms, Rat	6	Ms IgG <sub>1</sub>	IF, WB	RUO	Purified	50 µg	611286
<b>FEN-1</b>	Dog, Hu, Ms, Rat	21	Ms IgG <sub>1</sub>	Bioimg, IF, WB	RUO	Purified	50 µg	611294
<b>Fractin</b>	Hu	Polyclonal	Rab Ig	Bioimg, WB	RUO	Purified	100 µL	551527
<b>GOK (Stim1)</b>	Hu, Ms, Rat	44	Ms IgG <sub>2a</sub>	IF, WB	RUO	Purified	50 µg	610954
<b>Granzyme A</b>	Hu	CB9	Ms IgG <sub>1</sub> , κ	IC/FCM	RUO	Purified	0.1 mg	557449
				IC/FCM	RUO	FITC Set	100 tests	558905
				IC/FCM	RUO	PE Set	100 tests	558904
<b>Granzyme B</b>	Hu, Rat	2CF/F5	Ms IgG <sub>2a</sub>	WB	RUO	Purified	50 µg	550558
	Hu	GB11	Ms IgG <sub>1</sub> , κ	IC/FCM	RUO	Alexa Fluor® 647	0.1 mg	557867
				IC/FCM	RUO	Alexa Fluor® 700	25 µg	561016
				IC/FCM	RUO	Alexa Fluor® 700	0.1 mg	560213
				IC/FCM	RUO	FITC	100 tests	560211
				IC/FCM	RUO	BD Horizon V450	50 tests	561151
IC/FCM	RUO	PE	100 tests	561142				

# Apoptosis Product List

## Apoptosis Reagents

DESCRIPTION	REACT	CLONE	ISOTYPE	APPS	REG	FORMAT	SIZE	CAT. NO.			
<b>H2AX (pS139)</b>	Hu	N1-431	Ms IgG <sub>1</sub> , κ	Bioimg, WB	RUO	Purified	0.1 mg	<b>560443</b>			
				Bioimg, FCM	RUO	Alexa Fluor® 488	100 tests	<b>560445</b>			
				Bioimg	RUO	Alexa Fluor® 555	100 tests	<b>560446</b>			
				IC/FCM	RUO	Alexa Fluor® 647	100 tests	<b>560447</b>			
<b>Heme Oxygenase 1</b>	Hu	23	Ms IgG <sub>1</sub>	IF, WB	RUO	Purified	50 µg	<b>610712</b>			
				IF, WB	RUO	Purified	150 µg	<b>610713</b>			
<b>Heme Oxygenase 2</b>	Hu	44	Ms IgG <sub>2b</sub>	IF, WB	RUO	Purified	50 µg	<b>611054</b>			
<b>hHR23B</b>	Dog, Hu	16	Ms IgG <sub>1</sub>	IF, WB	RUO	Purified	50 µg	<b>611018</b>			
				IF, WB	RUO	Purified	150 µg	<b>611019</b>			
<b>hILP (XIAP)</b>	Dog, Hu, Ms	28	Ms IgG <sub>1</sub>	IF, WB	RUO	Purified	50 µg	<b>610716</b>			
				IF, WB	RUO	Purified	150 µg	<b>610717</b>			
	Frog, Hu, Ms, Rat	48	Ms IgG <sub>1</sub>	IF, IHC, WB	RUO	Purified	50 µg	<b>610762</b>			
				IF, IHC, WB	RUO	Purified	150 µg	<b>610763</b>			
<b>Histone H3 (pS28)</b>	Hu	HTA28	Rat IgG <sub>2a</sub> , κ	Bioimg	RUO	Alexa Fluor® 488	100 tests	<b>558610</b>			
				Bioimg	RUO	Alexa Fluor® 555	100 tests	<b>558613</b>			
	Hu, Ms	HTA28	Rat IgG <sub>2a</sub> , κ	IC/FCM	RUO	Alexa Fluor® 647	50 tests	<b>558217</b>			
				Bioimg	RUO	Alexa Fluor® 647	100 tests	<b>558609</b>			
Ms	HTA28	Rat IgG <sub>2a</sub> , κ	IC/FCM	RUO	BD Horizon V450	50 tests	<b>560606</b>				
<b>HSF4</b>	Hu, Ms	45	Ms IgG <sub>1</sub>	IF, WB	RUO	Purified	50 µg	<b>610830</b>			
<b>Hsp40</b>	Hu	5	Ms IgG <sub>2a</sub>	WB	RUO	Purified	50 µg	<b>611780</b>			
<b>Hsp60</b>	Hu, Ms, Rat	24/HSP60	Ms IgG <sub>1</sub>	IF, WB	RUO	Purified	50 µg	<b>611562</b>			
				IF, WB	RUO	Purified	150 µg	<b>611563</b>			
				IF	RUO	FITC	50 µg	<b>611958</b>			
	Hu	24/HSP60	Ms IgG <sub>1</sub>	Bioimg	RUO	Alexa Fluor® 488	100 tests	<b>558685</b>			
				Bioimg	RUO	Alexa Fluor® 555	100 tests	<b>558687</b>			
				Bioimg	RUO	Alexa Fluor® 647	100 tests	<b>558684</b>			
<b>Hsp70</b>	Hu	5G10	Ms IgG <sub>2b</sub>	IP, WB	RUO	Purified	0.1 mg	<b>554243</b>			
				Chick, Dog, Hu, Ms, Rat	7	Ms IgG <sub>1</sub>	IF, IP, WB	RUO	Purified	50 µg	<b>610607</b>
				IF, IP, WB			RUO	Purified	150 µg	<b>610608</b>	
<b>Hsp70/Hsc70</b>	Hu	W27	Ms IgG <sub>2a</sub>	WB	RUO	Purified	50 µg	<b>551188</b>			
<b>Hsp75 (TRAP1)</b>	Dog, Hu, Ms, Rat	42	Ms IgG <sub>1</sub>	IF, WB	RUO	Purified	50 µg	<b>612344</b>			
				IF, WB	RUO	Purified	150 µg	<b>612345</b>			
<b>Hsp90</b>	Chick, Dog, Hu, Ms, Rat	68	Ms IgG <sub>1</sub>	IF, IP, WB	RUO	Purified	50 µg	<b>610418</b>			
	Bov, Chick, Dog, Hu, Ms, Rat	68	Ms IgG <sub>1</sub>	IF, IP, WB	RUO	Purified	150 µg	<b>610419</b>			
<b>Hsp110</b>	Dog, Hu, Ms, Rat	21	Ms IgG <sub>1</sub>	IF, IHC, WB	RUO	Purified	50 µg	<b>610510</b>			
				IF, IHC, WB	RUO	Purified	150 µg	<b>610511</b>			
<b>I-FLICE</b>	Hu	Polyclonal	Rab IgG	WB	RUO	Purified	50 µg	<b>556567</b>			
<b>ICAD</b>	Ms	Polyclonal	Rab IgG	WB	RUO	Purified	0.2 mL	<b>550736</b>			
<b>c-IAP-2</b>	Hu	F30-2285	Ms IgG <sub>1</sub> , κ	WB	RUO	Purified	50 µg	<b>552782</b>			
				WB	RUO	Purified	150 µg	<b>552783</b>			
<b>IκBα</b>	Hu	25	Mouse IgG <sub>1</sub>	IF, IP, WB	RUO	Purified	50 µg	<b>610690</b>			
				IF, IP, WB	RUO	Purified	150 µg	<b>610691</b>			
				IP, WB	RUO	Purified	50 µg	<b>551819</b>			
<b>IκBα (pS32/pS36)</b>	Hu	39A1413	Ms IgG <sub>1</sub>	WB	RUO	Purified	50 µg	<b>551818</b>			
<b>IKKα</b>	Hu	B78-1	Ms IgG <sub>2b</sub> , κ	IP, WB	RUO	Purified	0.1 mg	<b>556532</b>			
<b>IKKβ</b>	Dog, Hu	24	Ms IgG <sub>1</sub>	IF, WB	RUO	Purified	50 µg	<b>611254</b>			
	Hu	F18-1875	Ms IgG <sub>1</sub> , κ	IP, WB	RUO	Purified	50 µg	<b>551920</b>			
<b>IKKγ</b>	Dog, Hu, Rat	54	Ms IgG <sub>1</sub>	IF, WB	RUO	Purified	50 µg	<b>611306</b>			
	Hu, Ms	C73-764	Ms IgG <sub>1</sub> , κ	IP, WB	RUO	Purified	0.1 mg	<b>559675</b>			
	Hu, Ms, Rat	C73-1794	Ms IgG <sub>1</sub>	WB	RUO	Purified	0.1 mg	<b>557383</b>			
<b>Itch</b>	Hu, Ms, Rab, Rat	32	Ms IgG <sub>1</sub>	IF, WB	RUO	Purified	50 µg	<b>611198</b>			
				IF, WB	RUO	Purified	150 µg	<b>611199</b>			
<b>JNK (pT183/pY185)</b>	Hu	41	Ms IgG <sub>1</sub>	WB	RUO	Purified	50 µg	<b>612540</b>			
				WB	RUO	Purified	150 µg	<b>612541</b>			
				Polyclonal	Rabbit IgG	IC/FCM, IHC(F)*, WB	RUO	Purified	50 tests	<b>558268</b>	

Apoptosis Reagents

DESCRIPTION	REACT	CLONE	ISOTYPE	APPS	REG	FORMAT	SIZE	CAT. NO.
<b>JNK/SAPK1</b>	Chick, Dog, Frog, Hu, Ms, Rat	37	Ms IgG <sub>1</sub>	IF, IHC, WB	RUO	Purified	50 µg	<b>610627</b>
				IF, IHC, WB	RUO	Purified	150 µg	<b>610628</b>
<b>JNK1</b>	Hu	G151-333	Ms IgG <sub>1</sub>	WB	RUO	Purified	50 µg	<b>551196</b>
				WB	RUO	Purified	150 µg	<b>551197</b>
<b>JNK1/JNK2</b>	Hu	G151-666	Ms IgG <sub>2a</sub>	IP, WB	RUO	Purified	0.1 mg	<b>554285</b>
<b>JNKK1</b>	Hu	G282-114	Ms IgG <sub>1</sub>	IP, WB	RUO	Purified	0.1 mg	<b>554105</b>
<b>Ki-67</b>	Hu	35	Ms IgG <sub>1</sub>	Bioimg, IF, WB	RUO	Purified	50 µg	<b>610968</b>
				Bioimg, IF, WB	RUO	Purified	150 µg	<b>610969</b>
				IF	RUO	FITC	50 µg	<b>612472</b>
	Hu, Ms, Pig, Rat	B56	Ms IgG <sub>1</sub> , κ	IC/FCM, Bioimg	RUO	Purified	0.1 mg	<b>556003</b>
				IHC(F)*, IHC(Fr)	RUO	Purified	1 mL	<b>550609</b>
				IC/FCM	RUO	Alexa Fluor® 488	50 tests	<b>561165</b>
				Bioimg	RUO	Alexa Fluor® 488	100 tests	<b>558616</b>
				Bioimg	RUO	Alexa Fluor® 555	100 tests	<b>558617</b>
				IC/FCM	RUO	Alexa Fluor® 647	50 tests	<b>561126</b>
				Bioimg	RUO	Alexa Fluor® 647	100 tests	<b>558615</b>
				IC/FCM	RUO	Alexa Fluor® 700	50 tests	<b>561277</b>
				IC/FCM	RUO	FITC Set	100 tests	<b>556026</b>
				IC/FCM	RUO	BD Horizon V450	50 tests	<b>561281</b>
				IC/FCM	RUO	PE Set	100 tests	<b>556027</b>
IC/FCM	RUO	PerCP-Cy5.5	50 tests	<b>561284</b>				
<b>Ku70</b>	Hu, Ms, Rat	15	Ms IgG <sub>1</sub>	IF, WB	RUO	Purified	50 µg	<b>611892</b>
				IF, WB	RUO	Purified	150 µg	<b>611893</b>
<b>Ku80</b>	Hu	7	Ms IgG <sub>1</sub>	IF, WB	RUO	Purified	50 µg	<b>611360</b>
<b>LITAF</b>	Hu	30	Ms IgG <sub>1</sub>	IF, WB	RUO	Purified	50 µg	<b>611614</b>
<b>LT-α</b>	Hu	359-238-8	Ms IgG <sub>1</sub>	ELISA Cap.	RUO	Purified	1.0 mg	<b>551222</b>
		359-81-11	Ms IgG <sub>1</sub>	ELISA Det.	RUO	Biotin	0.5 mg	<b>554555</b>
				IC/FCM	RUO	PE	0.1 mg	<b>554556</b>
<b>Mcl-1</b>	Hu	22	Ms IgG <sub>1</sub> , κ	IP, WB	RUO	Purified	0.1 mg	<b>559027</b>
		Polyclonal	Rab Ig	WB	RUO	Serum	0.1 mL	<b>554103</b>
<b>pan-MCM</b>	Hu	Polyclonal	Rab Ig	WB	RUO	Serum	0.1 mL	<b>559541</b>
<b>MCM4</b>	Hu, Ms	Polyclonal	Rab Ig	WB	RUO	Serum	0.1 mL	<b>559544</b>
<b>MCM6</b>	Hu	Ki-Mcm6	Ms IgG <sub>1</sub> , κ	FCM	RUO	FITC	100 tests	<b>557951</b>
		1	Ms IgG <sub>1</sub> , κ	Bioimg, IF, WB	RUO	Purified	50 µg	<b>611622</b>
<b>MDM2</b>	Hu	SMP14	Ms IgG <sub>1</sub>	Bioimg, IF, IP, WB	RUO	Purified	0.1 mg	<b>556353</b>
<b>MEK1</b>	Hu	25/MEK1	Ms IgG <sub>2a</sub>	Bioimg, IF, IHC, IP, WB	RUO	Purified	50 µg	<b>610121</b>
				Bioimg, IF, IHC, IP, WB	RUO	Purified	150 µg	<b>610122</b>
				IC/FCM	RUO	Alexa Fluor® 647	50 tests	<b>560101</b>
				IC/FCM	RUO	PE	50 tests	<b>560099</b>
<b>MEK1 (pS298)</b>	Hu, Ms	J114-64	Mouse (BALB/c) IgG <sub>1</sub> , κ	WB	RUO	Purified	0.1 mg	<b>558375</b>
				IC/FCM	RUO	Alexa Fluor® 488	50 tests	<b>560192</b>
				IC/FCM	RUO	Alexa Fluor® 647	50 tests	<b>560043</b>
				IC/FCM	RUO	PE	50 tests	<b>560042</b>
<b>MEK1/2 (pS222)</b>	Hu	Polyclonal	Rabbit IgG	IC/FCM, IHC(F)*, WB	RUO	Purified	50 tests	<b>558281</b>
<b>MEK2</b>	Chick, Dog, Frog, Hu, Ms, Rat	96/MEK2	Ms IgG <sub>2a</sub>	IF, IP, WB	RUO	Purified	50 µg	<b>610235</b>
				IF, IP, WB	RUO	Purified	150 µg	<b>610236</b>
	Hu	96/MEK2	Ms IgG <sub>2a</sub>	IC/FCM	RUO	Alexa Fluor® 647	50 tests	<b>560387</b>
				IC/FCM	RUO	PE	0.1 mg	<b>560388</b>
				WB	RUO	Purified	0.1 mg	<b>556386</b>
<b>MGMT</b>	Hu	MT5.1	Ms IgG <sub>1</sub> , κ	FCM, IP, WB	RUO	Purified	0.1 mg	<b>557045</b>
<b>MLH1</b>	Hu, Ms	G168-728	Ms IgG <sub>2a</sub> , κ	IP, WB	RUO	Purified	0.1 mg	<b>554073</b>
				IHC(Fr), IHC(P), WB	RUO	Purified	50 µg	<b>551091</b>
		G168-15	Ms IgG <sub>1</sub>	IHC(Fr), IHC(P), WB	RUO	Purified	150 µg	<b>551092</b>
IHC(Fr), IHC(P), WB	RUO			Purified	1 mL	<b>550838</b>		

Unless otherwise specified, all products are for Research Use Only. Not for use in diagnostic or therapeutic procedures. Not for resale. All applications are either tested in-house or reported in the literature. See Technical Data Sheets for details.

# Apoptosis Product List

## Apoptosis Reagents

DESCRIPTION	REACT	CLONE	ISOTYPE	APPS	REG	FORMAT	SIZE	CAT. NO.	
Mre11	Hu, Ms, Rat	18	Ms IgG <sub>1</sub>	IF, WB	RUO	Purified	50 µg	611366	
MSH2	Hu	G219-1129	Ms IgG <sub>1</sub>	IHC(F), IHC(Fr), WB	RUO	Purified	0.1 mg	556349	
MSH3	Hu	52	Ms IgG <sub>1</sub>	IF, WB	RUO	Purified	50 µg	611390	
MSH6	Dog, Hu, Ms, Rat	44	Ms IgG <sub>1</sub>	IF, WB	RUO	Purified	50 µg	610918	
				IF, WB	RUO	Purified	150 µg	610919	
c-Myc	Hu	9E10	Ms IgG <sub>1</sub>	WB	RUO	Purified	50 µg	551101	
				WB	RUO	Purified	150 µg	551102	
NAT1 (DAP-5)	Bov, Dog, Hu, Ms, Rat	35	Ms IgG <sub>1</sub>	IF, WB	RUO	Purified	50 µg	610742	
				IF, WB	RUO	Purified	150 µg	610743	
NBS1	Chick, Dog, Hu, Ms, Rat	34	Ms IgG <sub>1</sub>	IF, WB	RUO	Purified	50 µg	611870	
				IF, WB	RUO	Purified	150 µg	611871	
Nedd4	Ms	15	Ms IgG <sub>1</sub>	IF, WB	RUO	Purified	50 µg	611480	
				IF, WB	RUO	Purified	150 µg	611481	
Nip1	Hu, Rat	5	Ms IgG <sub>1</sub>	IF, WB	RUO	Purified	50 µg	611096	
Nucleosome	Ms, Hu	11E6	Ms IgG <sub>2b</sub> κ	IF	RUO	Purified	50 µg	550780	
p21	Hu	2G12	Ms IgG <sub>1</sub> κ	IHC(P), IP, WB	RUO	Purified	0.1 mg	554262	
		6B6	Ms IgG <sub>1</sub>	IHC(Fr), IHC(P), IP, WB	RUO	Purified	0.1 mg	554228	
	Hu, Ms, Rat	SX118	Ms IgG <sub>1</sub> κ	IF, IHC(Fr), IHC(P), IP, WB	RUO	Purified	0.1 mg	556430	
		SXM30	Ms IgG <sub>1</sub> κ	IF, IHC(Fr), IHC(P), IP, WB	RUO	Purified	0.1 mg	556431	
p33 <sup>ING1</sup>	Ms, Hu	CAb1	Ms IgG <sub>2a</sub>	WB	RUO	Purified	0.1 mg	550455	
p53	Dog, Hu	80	Ms IgG <sub>2b</sub> κ	IF, IP, WB	RUO	Purified	50 µg	610183	
				IF, IP, WB	RUO	Purified	150 µg	610184	
	Bov, Hu	DO-1	Ms IgG <sub>2a</sub>	IHC(F), IHC(Fr), IP, WB	RUO	Purified	0.1 mg	554293	
					RUO	Purified	0.1 mg	554294	
	Bov, Hu, Monk	DO-7	Ms IgG <sub>2b</sub>	FCM, IHC(F), IHC(Fr), IP, WB	FCM	RUO	FITC Set	100 tests	554298
					FCM	RUO	PE Set	100 tests	556534
					FCM	RUO	PE Set	100 tests	557026
	Hu, Ms, Rat	G59-12	Ms IgG <sub>1</sub>	IHC(F), IHC(Fr), IP, WB	FCM	RUO	FITC Set	100 tests	557026
					FCM	RUO	PE Set	100 tests	557027
	Ham, Hu, Monk, Ms, Rat	PAb 122	Ms IgG <sub>2b</sub>	FCM, IF, IP, WB	RUO	Purified	0.1 mg	554147	
		Bov, Chick, Ham, Hu, Monk, Ms, Rat	PAb 240	Ms IgG <sub>1</sub>	IHC(Fr), IP, WB	RUO	Purified	0.1 mg	554166
	Hu	PAb 1801	Ms IgG <sub>1</sub>	IHC(Fr), IP, WB	RUO	Purified	0.25 mg	554167	
					IF, IHC(Fr), IHC(P), IP, WB	RUO	Purified	0.1 mg	554169
IF, IHC(Fr), IHC(P), IP, WB					RUO	Purified	0.25 mg	554170	
p53 (ack382)	Hu	L82-51	Mouse (BALB/c) IgG <sub>1</sub> , κ	IC/FCM, WB	RUO	Alexa Fluor® 647	50 tests	560231	
p53 (p537)	Hu	J159-641.15.4	Mouse IgG1, κ	IHC(F)*, WB	RUO	Purified	0.1 mg	558369	
p53 (p546)	Hu	I117-1091	Mouse (BALB/c) IgG <sub>1</sub> , κ	IHC(F)*, WB	RUO	Purified	0.1 mg	558245	
Poly ADP-Ribose (PAR)	Hu	10H	Mouse IgG <sub>3</sub>	IF	RUO	Purified	50 µg	550781	
PAR [Poly(ADP-Ribose)]	Ms, Hu	Polyclonal	Rab Ig	WB	RUO	Purified	0.1 mL	551813	
PARP	Hu	C2-10	Ms IgG <sub>1</sub>	WB	RUO	Ascites	0.1 mL	556362	
		4C10-5	Ms IgG <sub>1</sub>	Bioimg, WB	RUO	Purified	0.1 mg	556494	
		7D3-6	Ms IgG <sub>1</sub>	WB	RUO	Purified	50 µg	551024	
	Dog, Hu, Ms, Rat	42	Ms IgG <sub>1</sub>	WB	WB	RUO	Purified	150 µg	551025
					IF, WB	RUO	Purified	50 µg	611038
					IF, WB	RUO	Purified	150 µg	611039
PARP, Cleaved Form (Asp 214)	Hu, Ms	F21-852	Ms IgG <sub>1</sub> , κ	IC/FCM, IP, WB	RUO	Purified	50 µg	552596	
				IC/FCM, WB	RUO	Purified	150 µg	552597	
				Bioimg	RUO	Alexa Fluor® 647	100 tests	558710	
				IC/FCM	RUO	FITC	100 tests	558576	
				IC/FCM	RUO	PE	100 tests	552933	

Apoptosis Reagents

DESCRIPTION	REACT	CLONE	ISOTYPE	APPS	REG	FORMAT	SIZE	CAT. NO.
<b>PCNA</b>	Dog, Hu, Ms, Rat	24	Ms IgG <sub>1</sub>	IF, IHC, WB	RUO	Purified	50 µg	<b>610664</b>
				IF, IHC, WB	RUO	Purified	150 µg	<b>610665</b>
	Hu	PC10	Ms IgG <sub>2a</sub> , κ	IHC(F), IC/FCM	RUO	Purified	0.1 mg	<b>555566</b>
				IC/FCM	RUO	Biotin	0.1 mg	<b>555567</b>
				IC/FCM	RUO	FITC Set	100 tests	<b>556030</b>
IC/FCM	RUO	PE Set	100 tests	<b>556031</b>				
<b>PDPK1</b>	Dog, Hu, Ms, Rat	5	Ms IgG <sub>1</sub>	IF, WB	RUO	Purified	50 µg	<b>611070</b>
				IF, WB	RUO	Purified	150 µg	<b>611071</b>
<b>PDPK1 (pS241)</b>	Hu	J66-653.44.17	Mouse IgG <sub>1</sub> , κ	IC/FCM	RUO	Alexa Fluor® 488	50 tests	<b>560090</b>
				IC/FCM	RUO	Alexa Fluor® 647	50 tests	<b>560091</b>
				IC/FCM	RUO	PE	50 tests	<b>560092</b>
		J66-653.44.22	Mouse IgG <sub>1</sub> , κ	WB	RUO	Purified	0.1 mg	<b>558395</b>
<b>Perforin</b>	Hu	δG9	Ms IgG <sub>2b</sub>	FCM, IF, IHC(Fr), IP	RUO	Purified	0.1 mg	<b>556434</b>
				FCM	RUO	FITC Set	100 tests	<b>556577</b>
				FCM	RUO	PE Set	100 tests	<b>556437</b>
<b>Peroxiredoxin V</b>	Rat	44	Ms IgG <sub>1</sub>	WB	RUO	Purified	50 µg	<b>612084</b>
<b>PKC</b>	Bov, Chick, Hu, Ms, Rab, Rat	MC5	Ms IgG <sub>2a</sub>	WB	RUO	Purified	0.1 mg	<b>554207</b>
<b>PKR (p68 Kinase)</b>	Hu	13	Ms IgG <sub>1</sub>	IF, WB	RUO	Purified	50 µg	<b>610764</b>
<b>PLK1 (pT210)</b>	Hu	K50-483	Ms IgG <sub>1</sub> , κ	WB	RUO	Purified	0.1 mg	<b>558400</b>
				IC/FCM	RUO	Alexa Fluor® 488	50 tests	<b>558446</b>
				IC/FCM	RUO	Alexa Fluor® 647	50 tests	<b>558447</b>
				IC/FCM	RUO	PE	50 tests	<b>558445</b>
<b>PMS2</b>	Hu, Ms	A16-4	Ms IgG <sub>1</sub>	IF, IP, WB	RUO	Purified	0.1 mg	<b>556415</b>
<b>PTEN</b>	Hu	A2B1	Ms IgG <sub>1</sub> , κ	WB	RUO	Purified	100 µg	<b>559600</b>
				IC/FCM	RUO	Alexa Fluor® 647	50 tests	<b>560003</b>
				IC/FCM	RUO	PE	50 tests	<b>560002</b>
<b>Ras</b>	Chick, Dog, Hu, Ms, Rat	18	Mouse IgG <sub>1</sub>	IF, IHC, IP, WB	RUO	Purified	150 µg	<b>610002</b>
				IF	RUO	FITC	50 µg	<b>611840</b>
				IF	RUO	FITC	150 µg	<b>611841</b>
<b>R-ras</b>	Ms	Polyclonal	Rab IgG	IF, IHC(Fr), IHC(P), WB	RUO	Serum	0.1 mL	<b>554280</b>
<b>Ras-GAP</b>	Chick, Dog, Frog, Hu, Ms, Rat	13	Mouse IgG <sub>1</sub>	IF, IHC, WB	RUO	Purified	50 µg	<b>610040</b>
<b>Ras-GAP</b>	Chick, Dog, Frog, Hu, Ms, Rat	13	Mouse IgG <sub>1</sub>	IF, IHC, WB	RUO	Purified	150 µg	<b>610041</b>
<b>Rad50</b>	Hu	13	Ms IgG <sub>1</sub>	IF, WB	RUO	Purified	50 µg	<b>611010</b>
<b>hRad9</b>	Hu, Ms, Rat	56	Ms IgG <sub>1</sub>	IF, WB	RUO	Purified	50 µg	<b>611324</b>
<b>Rb (a.a. 1-240)</b>	Hu	G99-2005	Ms IgG <sub>1</sub>	IP, WB	RUO	Purified	0.1 mg	<b>554162</b>
<b>Rb (a.a. 300-380)</b>	Hu	G3-349	Ms IgG <sub>1</sub>	WB	RUO	Purified	0.1 mg	<b>554140</b>
<b>Rb (a.a. 332-344)</b>	Hu	G3-245	Ms IgG <sub>1</sub>	Bioimg, WB	RUO	Purified	0.1 mg	<b>554136</b>
				IC/FCM	RUO	FITC Set	100 tests	<b>556538</b>
<b>Rb (a.a. 443-622)</b>	Hu	XZ55	Ms IgG <sub>1</sub>	WB	RUO	Purified	0.1 mg	<b>554144</b>
<b>Rb (a.a. 444-535)</b>	Hu	XZ91	Ms IgG <sub>2a</sub>	WB	RUO	Purified	0.1 mg	<b>554145</b>
<b>Rb (pS780)</b>	Hu	J146-35	Ms IgG <sub>1</sub> , κ	IHC(F)*, WB	RUO	Purified	0.1 mg	<b>558385</b>
<b>Rb, Underphosphorylated (a.a. 514-610)</b>	Hu	G99-549	Ms IgG <sub>1</sub>	IP, WB	RUO	Purified	0.1 mg	<b>554164</b>
				IC/FCM	RUO	FITC Set	100 tests	<b>550501</b>
				IC/FCM	RUO	PE Set	100 tests	<b>550502</b>
<b>Rb (pS780)</b>	Hu	J146-35	Mouse (BALB/c) IgG <sub>1</sub> , κ	IC/FCM	RUO	Alexa Fluor® 488	50 tests	<b>558554</b>
				IC/FCM	RUO	PE	50 tests	<b>558548</b>
<b>Rb (pS807/pS811)</b>	Hu	J112-906	Mouse (BALB/c) IgG <sub>2a</sub> , κ	WB	RUO	Purified	0.1 mg	<b>558389</b>
				IC/FCM	RUO	Alexa Fluor® 488	50 tests	<b>558589</b>
				IC/FCM	RUO	Alexa Fluor® 647	50 tests	<b>558590</b>
				IC/FCM	RUO	PE	50 tests	<b>558549</b>
<b>Rb2</b>	Chick, Hu, Ms, Rat, Dros	10	Ms IgG <sub>2a</sub>	IF, IHC, WB	RUO	Purified	50 µg	<b>610261</b>
				IF, IHC, WB	RUO	Purified	150 µg	<b>610262</b>
<b>RCC1</b>	Dog, Hu	9	Ms IgG <sub>1</sub>	IF, IHC, WB	RUO	Purified	50 µg	<b>610377</b>

# Apoptosis Product List

## Apoptosis Reagents

DESCRIPTION	REACT	CLONE	ISOTYPE	APPS	REG	FORMAT	SIZE	CAT. NO.			
Ref-1	Dog, Hu, Ms, Rat	15	Ms IgG <sub>1</sub>	IF, WB	RUO	Purified	50 µg	610816			
RIP	Chick, Dog, Hu, Ms, Rat	38	Ms IgG <sub>2b</sub>	IF, IP, WB	RUO	Purified	50 µg	610458			
				IF, IP, WB	RUO	Purified	150 µg	610459			
	Hu	G322-2	Ms IgG <sub>1</sub> , κ	WB	RUO	Purified	50 µg	551041			
				WB	RUO	Purified	150 µg	551042			
RIP2/RICK	Hu	25	Ms IgG <sub>1</sub>	WB	RUO	Purified	50 µg	612348			
				WB	RUO	Purified	150 µg	612349			
Smac/DIABLO	Dog, Hu, Ms, Rat	7	Ms IgG <sub>1</sub>	Bioimg, IF, WB	RUO	Purified	50 µg	612244			
				Bioimg, IF, WB	RUO	Purified	150 µg	612245			
				WB	RUO	Purified	50 µg	612246			
Smad2/3	Dog, Hu, Ms, Rat	18	Ms IgG <sub>1</sub>	IF, WB	RUO	Purified	50 µg	610842			
				IF, WB	RUO	Purified	150 µg	610843			
SREBP-1	Hu, Ham	IgG-2A4	Ms IgG <sub>1</sub> , κ	IP, WB	RUO	Purified	0.1 mg	557036			
SREBP-2	Hu	IgG-1C6	Ms IgG <sub>1</sub> , κ	IP, WB	RUO	Purified	0.1 mg	557037			
ST11 (Hop-p60)	Dog, Hu	28	Ms IgG <sub>1</sub>	IF, WB	RUO	Purified	50 µg	610834			
SOD (Superoxide Dismutase)	Hu	G215-1	Ms IgG <sub>2b</sub>	WB	RUO	Purified	0.1 mg	556360			
TIAR	Dog, Frog, Hu, Ms, Rat	6	Ms IgG <sub>1</sub>	IF, IHC, IP, WB	RUO	Purified	50 µg	610352			
Tim23	Hu, Ms, Rat	32	Ms IgG <sub>2b</sub>	IF, WB	RUO	Purified	50 µg	611222			
				IF, WB	RUO	Purified	150 µg	611223			
TNF-α	Hu	6401.1111	Ms IgG <sub>1</sub> , κ	FCM, IC	RUO(GMP)	APC	100 tests	340534			
				FCM, IC	RUO(GMP)	FITC	50 tests	340511			
				FCM, IC	RUO(GMP)	PE	50 tests	340512			
TNF	Hu	Mab1	Ms IgG <sub>1</sub>	Neu	RUO	NA/LE	0.5 mg	554508			
				ELISA Cap.	RUO	Purified	1.0 mg	551220			
				Bab, Cyno, Rhe	MAB11	Ms IgG <sub>1</sub> , κ	IC/FCM	RUO	Purified	0.1 mg	558882
							IC/FCM	RUO	APC	50 tests	551384
	IC/FCM	RUO	FITC				50 tests	552889			
	Hu	MAB11	Ms IgG <sub>1</sub> , κ	IC/FCM	RUO	PE	50 tests	557068			
				IC/FCM Block	RUO	Purified	0.1 mg	554510			
				ICC	RUO	Purified	0.25 mg	559071			
				IC/FCM	RUO	Alexa Fluor® 488	100 tests	557722			
				IC/FCM	RUO	Alexa Fluor® 700	25 µg	561023			
				IC/FCM	RUO	APC	0.1 mg	554514			
				ELISA Det.	RUO	Biotin	0.5 mg	554511			
				IC/FCM	RUO	FITC	0.1 mg	554512			
	Ms, Rat	G281-2626	Rat IgG <sub>1</sub>	IC/FCM	RUO	PE	0.1 mg	554513			
				IC/FCM	RUO	PE	100 tests	559321			
				IC/FCM	RUO	PE-Cy7	25 tests	560923			
FCM*				RUO	PE-Cy7	100 tests	557647				
Ms, Rat	MABTNF-A5	Ms IgG <sub>2a</sub> , κ	Neu	RUO	NA/LE	0.5 mg	552467				
			Neu	RUO	NA/LE	0.5 mg	554640				
				ELISA Cap., WB	RUO	Purified	1.0 mg	551225			

Apoptosis Reagents

DESCRIPTION	REACT	CLONE	ISOTYPE	APPS	REG	FORMAT	SIZE	CAT. NO.				
<b>TNF (continued)</b>	Ms	MP6-XT3	Rat IgG <sub>1</sub>	Neu	RUO	NA/LE	0.5 mg	554414				
				ELISA Det., WB	RUO	Biotin	0.5 mg	554415				
		MP6-XT22	Rat IgG <sub>1</sub>		ELISA Cap., IC/FCM Block	RUO	Purified	0.1 mg	554416			
					ICC	RUO	Purified	0.25 mg	559064			
					IC/FCM	RUO	Alexa Fluor® 488	0.1 mg	557719			
					IC/FCM	RUO	Alexa Fluor® 647	0.1 mg	557730			
					IC/FCM	RUO	Alexa Fluor® 700	0.1 mg	558000			
					IC/FCM	RUO	APC	25 µg	561062			
					IC/FCM	RUO	APC	0.1 mg	554420			
					IC/FCM	RUO	APC-Cy7	50 µg	560658			
					IC/FCM	RUO	FITC	25 µg	561064			
					IC/FCM	RUO	FITC	0.1 mg	554418			
		516D1A1	Human Fab Ig		ELISA Det.	RUO	Biotin	0.5 mg	558415			
					Polyclonal	Rab Ig	ELISA Det.	RUO	Biotin	0.5 mg	557432	
	TN3-19.12				Ar Ham IgG1, λ1	IP, Neu, WB	RUO	NA/LE	0.5 mg	557370		
						ELISA Cap., IC/FCM Block, IP, WB	RUO	Purified	0.5 mg	557516		
						TN3-19.12	Ar Ham IgG1, λ1	IC/FCM	RUO	PE	0.1 mg	559503
						Rab	23H1.1	Ms IgG <sub>1</sub> , κ	ELISA Det.	RUO	Biotin	0.5 mg
	Polyclonal	Gt IgG	ELISA Cap.	RUO	Purified		1.0 mg	551214				
	<b>TopBP1</b>	Hu	33	Ms IgG <sub>1</sub>	IF, WB	RUO	Purified	50 µg	611874			
IF, WB					RUO	Purified	150 µg	611875				
<b>Topo IIα</b>	Hu	31	Ms IgG <sub>1</sub>	Bioimg, IF, WB	RUO	Purified	50 µg	611326				
				Bioimg, IF, WB	RUO	Purified	150 µg	611327				
<b>Topo IIβ</b>	Hu	40	Ms IgG <sub>1</sub>	Bioimg, IF, WB	RUO	Purified	50 µg	611492				
				Bioimg, IF, WB	RUO	Purified	150 µg	611493				
<b>TRADD</b>	Hu, Rat	37	Ms IgG <sub>1</sub>	IF, IHC, IP, WB	RUO	Purified	50 µg	610572				
				IF, IHC, IP, WB	RUO	Purified	150 µg	610573				
	Hu	B36-2	Ms IgG <sub>1</sub>	WB	RUO	Purified	0.1 mg	556496				
<b>TRAF3</b>	Hu	B1-6	Ms IgG <sub>1</sub> , κ	WB	RUO	Purified	0.1 mg	556461				
<b>TRF2</b>	Dog, Hu	36	Ms IgG <sub>1</sub>	WB	RUO	Purified	50 µg	611200				
<b>Ubc9</b>	Chick, Dog, Hu, Ms, Rat	50	Ms IgG <sub>2a</sub>	IF, IHC, WB	RUO	Purified	50 µg	610748				
				IF, IHC, WB	RUO	Purified	150 µg	610749				
<b>UbcH6</b>	Dog, Hu, Ms, Rat	42	Ms IgG <sub>1</sub>	IF, WB	RUO	Purified	50 µg	611218				
<b>UbcH7</b>	Dog, Frog, Hu, Ms, Rat	20	Ms IgG <sub>1</sub>	IF, WB	RUO	Purified	50 µg	610852				
				IF, WB	RUO	Purified	150 µg	610853				
<b>XPA</b>	Hu	12F5	Ms IgG <sub>2a</sub> , κ	IP, WB	RUO	Purified	0.1 mg	556453				
<b>XRCC4</b>	Hu	4	Ms IgG <sub>2b</sub>	IF, WB	RUO	Purified	50 µg	611506				

## Apoptosis Product List

### Proteins

DESCRIPTION	REACT	APPS	REG	FORMAT	SIZE	CAT. NO.
<b>Annexin V</b>		Block, FCM	RUO	Purified	0.1 mg	<b>556416</b>
		FCM	RUO	Biotin	100 tests	<b>556418</b>
		FCM	RUO	Biotin	200 tests	<b>556417</b>
		FCM	RUO	APC	25 tests	<b>561012</b>
		FCM	RUO	APC	100 tests	<b>550474</b>
		FCM	RUO	APC	200 tests	<b>550475</b>
		FCM	RUO	Cy5	100 tests	<b>559933</b>
		FCM	RUO	Cy5	200 tests	<b>559934</b>
		FCM	RUO	Cy5.5	100 tests	<b>559935</b>
		FCM	RUO	FITC	25 tests	<b>560931</b>
		FCM	RUO	FITC	100 tests	<b>556420</b>
		FCM	RUO	FITC	200 tests	<b>556419</b>
		FCM	RUO	BD Horizon V450	50 tests	<b>560506</b>
		FCM	RUO	BD Horizon V500	50 tests	<b>561501</b>
		FCM	RUO	PE	25 tests	<b>560930</b>
		FCM	RUO	PE	100 tests	<b>556422</b>
	FCM	RUO	PE	200 tests	<b>556421</b>	
<b>Caspase-3, Active Form, Recombinant Human Protein</b>		FA, SF	RUO	Purified	5 µg	<b>556472</b>
		FA, SF	RUO	Purified	10 µg	<b>556471</b>
<b>Caspase-8, Active Form, Recombinant Human Protein</b>		FA, SF	RUO	Purified	5 µg	<b>556481</b>
		FA, SF	RUO	Purified	10 µg	<b>556480</b>
<b>Fas (Soluble) Recombinant Human Protein (Fas<sup>o</sup>TM)</b>	Hu	WB	RUO	Purified	10 µg	<b>554336</b>
<b>Fas:Fc Chimeric Fusion Protein</b>		IP	RUO	Purified	0.1 mg	<b>556578</b>
<b>LT-<math>\alpha</math>, Recombinant human</b>	Hu	ELISA Std., FA	RUO	Purified	10 µg	<b>554619</b>
<b>p53 (Wildtype) Recombinant Human Protein</b>		WB	RUO	Purified	10 µg	<b>556439</b>
<b>TNF, Recombinant human</b>	Hu	ELISA Std., FA	RUO	Purified	10 µg	<b>554618</b>
<b>TNF, Recombinant mouse</b>	Ms	ELISA Std., FA, IC/FCM Block	RUO	Purified	10 µg	<b>554589</b>
<b>TNF, Recombinant Rabbit</b>	Rab	ELISA	RUO	Purified	10 tests	<b>558135</b>
<b>TNF, Recombinant rat</b>	Rat	ELISA Std., FA	RUO	Purified	5 µg	<b>555109</b>

## Apoptosis Product List

### Peptides

DESCRIPTION	APPS	REG	FORMAT	SIZE	CAT. NO.
<b>Caspase Inhibitor</b>	FA	RUO	Lyophilized	1.0 mg	<b>552892</b>
<b>Caspase Inhibitors Negative Control, Z-FA-FMK</b>	FA, SF	RUO	Purified	1.0 mg	<b>550411</b>
<b>Caspase-3 Fluorogenic Substrate, Ac-DEVD-AFC</b>	SF, FA	RUO	Purified	1.0 mg	<b>556574</b>
<b>Caspase-3 Fluorogenic Substrate, Ac-DEVD-AMC</b>	SF, FA	RUO	Purified	1.0 mg	<b>556449</b>
<b>Caspase-3 Inhibitor, Ac-DEVD-CHO</b>	SF, FA	RUO	Purified	1.0 mg	<b>556465</b>
<b>Caspase-3 Inhibitor, Z-DEVD-FMK</b>	FA, SF	RUO	Purified	1.0 mg	<b>550378</b>
<b>Caspase-8 Fluorogenic Substrate, Ac-IETD-AFC</b>	SF, FA	RUO	Purified	1.0 mg	<b>556552</b>
<b>Caspase-8 Inhibitor, Ac-IETD-CHO</b>	SF, FA	RUO	Purified	1.0 mg	<b>556554</b>
<b>Caspase-8 Inhibitor, Z-IETD-FMK</b>	FA, SF	RUO	Purified	1.0 mg	<b>550380</b>
<b>Caspase-9 Inhibitor, Z-LEHD-FMK</b>	FA, SF	RUO	Purified	1.0 mg	<b>550381</b>
<b>General Caspase Inhibitor, Z-VAD-FMK</b>	FA, SF	RUO	Purified	1.0 mg	<b>550377</b>

Buffers/Solutions

DESCRIPTION	APPS	REG	FORMAT	SIZE	CAT. NO.
<b>7-AAD Staining Solution</b>	FCM	RUO	Solution	2 mL	<b>559925</b>
<b>Annexin V Binding Buffer, 10X Concentrate</b>	FM, FCM	RUO	Buffer	50 mL	<b>556454</b>
<b>BrdU Solution</b>		RUO	Solution	25.0 mg	<b>550891</b>
<b>Cell Lysis Buffer</b>		RUO	Buffer	50 mL	<b>559759</b>
<b>Cell Viability Solution</b>	FCM	RUO	Solution	100 tests	<b>555816</b>
	FCM	RUO	Solution	500 tests	<b>555815</b>
<b>BD Cytotfix/Cytoperm™ Fixation/Permeabilization Solution Kit</b>	IC/FCM	RUO	Fixation/Permeabilization solution (125 mL) and BD Perm/Wash™ buffer, 10X concentrate containing Fetal Bovine Serum (FBS) and saponin (100 mL)	250 tests	<b>554714</b>
<b>BD Cytotfix/Cytoperm™ Fixation/Permeabilization Solution Kit with BD GolgiPlug™</b>	IC/FCM	RUO	Fixation/Permeabilization solution (125 mL), BD Perm/Wash™ buffer, 10X concentrate containing Fetal Bovine Serum (FBS) and saponin (100 mL), and BD GolgiPlug™ protein transport inhibitor (containing brefeldin A)	250 tests	<b>555028</b>
<b>BD Cytotfix/Cytoperm™ Fixation/Permeabilization Solution Kit with BD GolgiStop™</b>	IC/FCM	RUO	Fixation/Permeabilization solution (125 mL), BD Perm/Wash™ buffer, 10X concentrate containing Fetal Bovine Serum (FBS) and saponin (100 mL), and BD GolgiStop™ protein transport inhibitor (containing monensin)	250 tests	<b>554715</b>
<b>Fixation/Permeabilization Solution</b>	IC/FCM	RUO	Solution	250 tests	<b>554722</b>
<b>PI/RNase Staining Buffer</b>	FCM	RUO	Buffer	100 mL	<b>550825</b>
<b>Propidium Iodide Staining Solution</b>	FCM	RUO	Solution	2 mL	<b>556463</b>
<b>Protein Transport Inhibitor (containing brefeldin A)</b>	IC/FCM	RUO	Solution	250 tests	<b>555029</b>

---

For Research Use Only. Not for use in diagnostic or therapeutic procedures.

Cy™ is a trademark of Amersham Biosciences Corp. Cy dyes are subject to proprietary rights of Amersham Biosciences Corp and Carnegie Mellon University and are made and sold under license from Amersham Biosciences Corp only for research and in vitro diagnostic use. Any other use requires a commercial sublicense from Amersham Biosciences Corp, 800 Centennial Avenue, Piscataway, NJ 08855-1327, USA.

Alexa Fluor® is a registered trademark of Molecular Probes, Inc.

BD, BD Logo and all other trademarks are property of Becton, Dickinson and Company. © 2011 BD

23-12504-00

