

# BD FACSLink

## Laboratory Information System Interface Solution

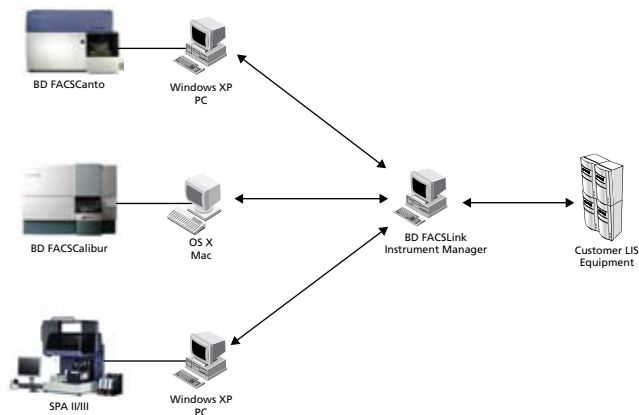
### Features

Provides bi-directional LIS connectivity for BD FACST<sup>™</sup> SPA, BD FACSCanto<sup>™</sup> clinical, BD FACSDiva<sup>™</sup>, BD<sup>™</sup> Worklist Manager, BD Multiset<sup>™</sup>, and BD<sup>™</sup> HLA-B27 software

Helps eliminate manual data entry of results after acquisition and analysis

Reduces errors due to manual transcriptions, improving laboratory productivity and data quality

Provides remote access for users to create a worklist or transfer reviewed results from any workstation in the laboratory



**Figure 1. BD FACSLink LIS interface solution**

BD FACSLink software enables users to create BD instrument worklists based on LIS test requests downloaded to Instrument Manager. IM provides the connection to the customer's LIS for test request information downloading and results transfer.

As clinical laboratories strive for improved productivity, the need to interface laboratory instruments to a Laboratory Information System (LIS) has become increasingly important. The BD<sup>™</sup> FACSLink LIS interface provides an easy-to-configure solution for clinical laboratories.

### Connect to a Laboratory Information System

Developed in collaboration with Data Innovations, a leading middleware provider experienced in clinical applications, this LIS interface solution allows the direct transfer of information between BD clinical instrument software and an LIS, reducing errors commonly caused by manual transcriptions.

### Improve productivity, reduce operator errors

Powered by Data Innovations Instrument Manager<sup>™</sup> (IM) software, BD FACSLink enables customers to create worklists containing downloaded LIS test requests for BD FACSCanto<sup>™</sup>, BD FACSCanto<sup>™</sup> II, and BD FACSCalibur<sup>™</sup> cytometers and for the BD FACST<sup>™</sup> Sample Prep Assistant II and III (SPA II and III). BD FACSLink also allows customers to select and transfer reviewed results from the instrument software to the LIS with no manual entry.

### Create worklists for use in BD clinical instruments

Customers select the type of BD instrument worklist to create, then enter the sample IDs into the worklist manually or using a barcode reader. The test request information, previously downloaded from the LIS, will match the sample ID and automatically populate the worklist. If more than one test request is displayed, the user can select the correct test request to run in the worklist.

Based on the test request, BD FACSLink automatically populates the carousel and tube position data in the worklist. At this point, a user can add information to the worklist and export it to a shared folder to be used with the SPA, BD FACSCanto clinical, BD FACSDiva, or BD Worklist Manager software. Automating the entry of sample and test request information from the LIS into the BD instrument software saves time and eliminates manual processes.

Visit [bdbiosciences.com](http://bdbiosciences.com) for more information.



# BD FACSLink Laboratory Information System Interface Solution

## Transfer results to the LIS

Once users complete acquisition and analysis using BD FACSCanto clinical, BD FACSDiva, BD Multiset, or BD HLA-B27 software, they can transfer the reviewed results back to the LIS through BD FACSLink. Users can browse for a result file to be loaded into Instrument Manager, storing the results until they are ready for release to the LIS. Results can also be released directly to the LIS without holding them in IM.

## Remote access from any BD workstation

The BD FACSLink LIS interface solution provides a remote access capability, which allows users to create a worklist or transfer analyzed and reviewed results from any BD workstation in the laboratory. BD FACSLink operates on a PC running Microsoft® Windows® XP, making it easy to integrate into most laboratory environments and workflows.

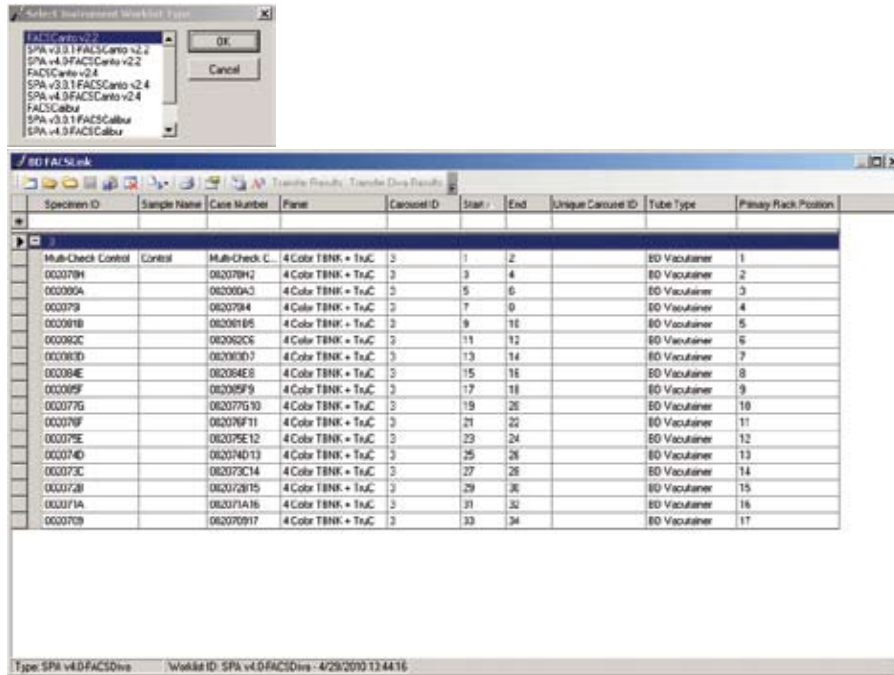


Figure 2. With BD FACSLink, users can create worklists for use with BD flow cytometers.

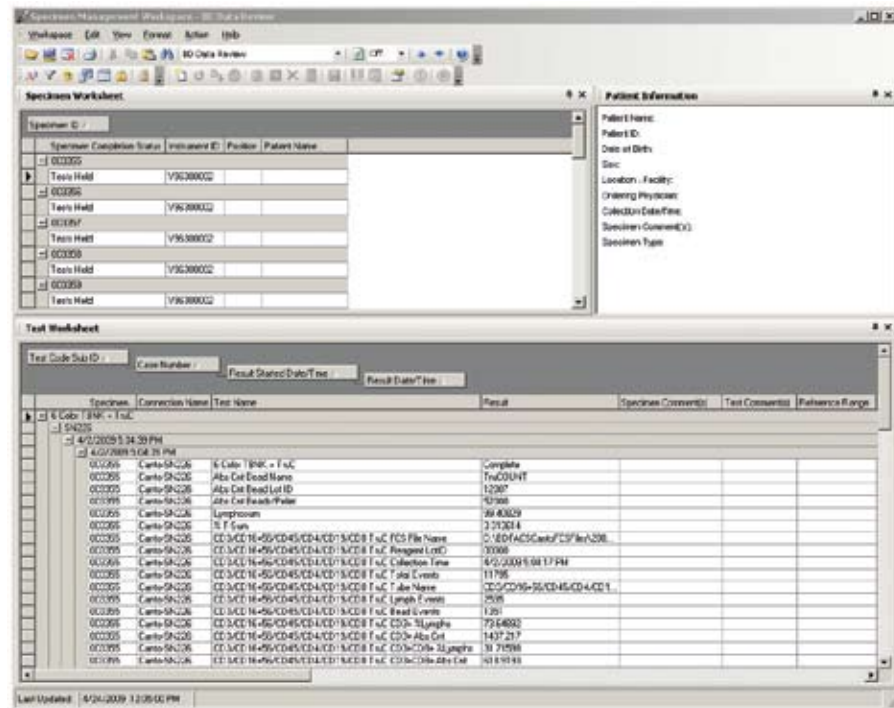


Figure 3. The BD FACSLink default configuration will hold all results for verification in Instrument Manager. Users can review results in the Specimen Management workspace before releasing them to the LIS.



**BD Biosciences**  
 2350 Qume Drive  
 San Jose, CA 95131  
 US Orders: 877.232.8995  
 answers@bd.com  
 bdbiosciences.com