

BD AttoVision Software, Version 1.7

An integrated, sophisticated data management solution for BD Pathway high-content bioimagers

Features

- Assigns customized metadata to experiments
- Organizes data into virtual folders for high efficiency
- Links any cross-reference to experiments, providing flexibility
- Delivers query results based on metadata and virtual folder assignments for powerful search capabilities
- Manages large amounts of data from a central repository for high performance
- Supports 384-well plate maps for compatibility

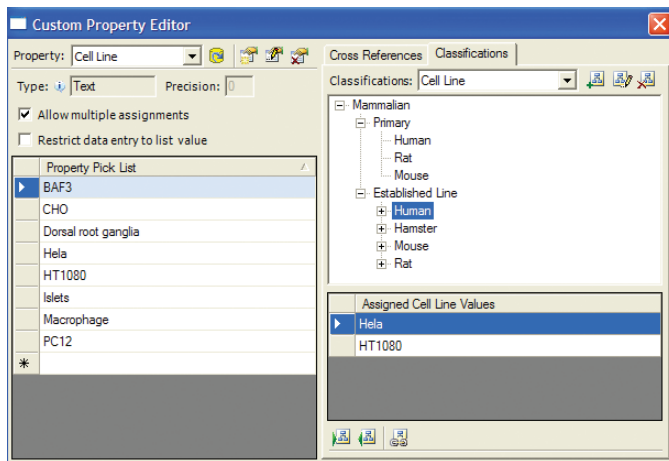


Figure 1. An example of classification of cell lines based on custom cell line properties.

BD Biosciences offers BD AttoVision™ 1.7 software with key new features to effectively manage data generated by BD Pathway™ high-content bioimagers. The software can manage data from 384-well treatment plate maps for compatibility with a range of plates.

High-content applications typically generate enormous amounts of image and analysis data. It is crucial for users to manage and query this data effectively. BD AttoVision 1.7 software data management works seamlessly with an SQL-based server so that researchers achieve and maintain increased knowledge from their experiments.

The new capabilities include generation of both customized and standard metadata for assignment to experiments. With BD AttoVision 1.7 software, users can store and synchronize data in a central repository. Centralized storage simplifies data management, allows creation of custom classification hierarchies, and speeds the execution and saving of custom queries based on metadata. These capabilities are critical to assay developers and high-content screeners using BD Pathway bioimaging systems. For example, centralized storage with BD AttoVision 1.7 software allows users to browse and query to quickly and easily find an experiment.

Metadata: Custom properties and classification

BD AttoVision 1.7 software's new metadata capability is based on generation of new custom properties that can be assigned to experiment data acquired on BD Pathway high-content bioimagers. The properties also can be arranged or classified into custom hierarchies, and these hierarchies can be used in querying. Default properties such as Experiment name, Acquisition date, Barcode, Macro name, and Pathway user id are assigned to the experiments automatically.

Central repository for data management

BD AttoVision 1.7 software offers advanced tools that enable transfer of data from the BD Pathway computer or offline client computers to any number of virtual folders—automatically generated storehouses—in the central repository. The data residing in the central repository can be accessed by multiple users for further analysis and can also be synchronized with local client data.

Querying data

BD AttoVision 1.7 software offers sophisticated query functionality that can be used to generate simple or complex queries. The queries can be based on assigned virtual folders, custom or default properties, and custom hierarchies. Queries can be saved and reused for quick access to data. Real-time results based on the queries can be viewed directly from the central repository.

Visit bdbiosciences.com for more information.



BD AttoVision Software Version 1.7

Server ensures high performance

BD Biosciences recommends the following server configuration to house and manage the database and the central repository. This server configuration has been validated extensively with high-content data to provide a seamless performance with BD AttoVision software.

Recommended server configuration

Processor: Intel® Xeon® E5504 (4 cores)

RAM: 4 GB

Hard drive: 4x1 TB MDL SATA 7.2K RPM (4 TB total)

OS: Microsoft® 2003 Server Edition standard (1SRV, 5-CALS)

Integrated Network: NC326i Gigabit Ethernet IEEE 802.3ab

Graphics Controller: ATI™ RN50 64MB

Controller: Serial Attached SCSI RAID controller

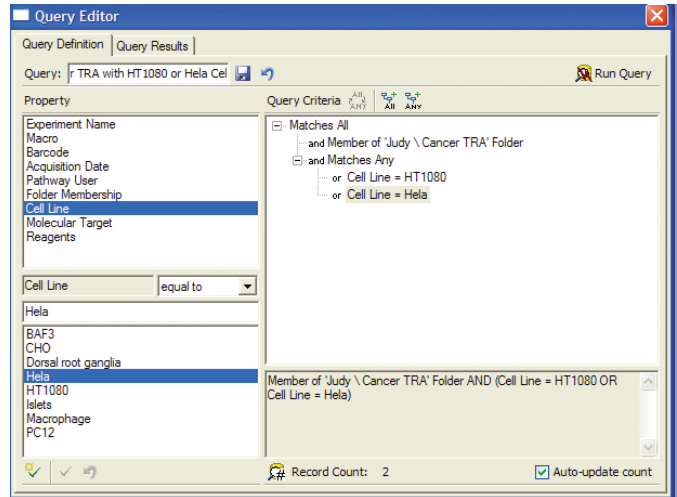


Figure 3. Example of a query created to locate data from cell lines HT1080 or Hela in a virtual folder of a user.

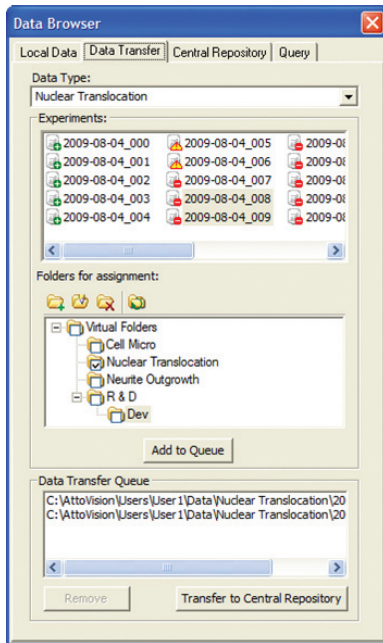


Figure 2. Data assigned to different virtual folders and queued for transfer to a central repository.

Ordering Information

Description	Cat. No.
BD AttoVision Software, Version 1.7	646546



BD Biosciences

2350 Qume Drive
 San Jose, CA 95131
 US Orders: 877.232.8995
 answers@bd.com
 bdbiosciences.com